



FORWELL™

For Mechanical Presses

沖床專用快速換模系統 Quick Die Change System

www.forwell.com

公司簡介

富偉公司成立於1987年，主要生產自動化、省力化之各式快速換模系統。如沖床快速換模系統、射出機及壓鑄機快速換模系統、印刷電路板沖孔油壓脫料系統，以及各種自動化夾具快速換模系統。在產品品質及功能方面已深獲使用客戶認同，在穩定成長的同時，富偉仍不斷秉持著「品質榮譽、服務回饋、創新發展」的經營理念，研究開發符合客戶需求的產品，以期能為客戶提供更加完整的產品。



Introduction

FORWELL was established in 1987. We specialize in the manufacture of labor saving press automation equipment for mechanical presses. Our Quick Die Change Systems work in conjunction with various mold clamping systems for automatic punching presses, injection molding machines, die casting machines, PCB fine piercing, and die clamping systems. Quality and functionality are the hallmarks of our products, earning our press machine accessories wide acclaim throughout the industry. FORWELL is a leader in the development of new press automation equipment as we offer new products on a consistent basis; and we are proud of our 30 year history of meeting and exceeding customer requirements. We offer our press automation equipment to any test!



目錄 Index

3	快速換模系統元件組成	QDCS Units Introduction
5	富偉QDCS的商業效益	Benefits of FORWELL QDCS
6	組件選用基準	Selection of System Components
8	氣動泵組合選用	Power Unit-Selection of System Components
12	TX夾模器	TX Die Clamp
13	TY夾模器	TY Die Clamp
14	TY-B固定式夾模器	TY-B Die Clamp (Fixed Type)
14	TY-BS滑軌式夾模器	TY-BS Die Clamp (Sliding Type)
15	TX-C自動推拉夾模器	TX-C Die Clamp (Automatic Type)
15	TY-S旋轉式夾模器	TY-S Die Clamp (Rotary Type)
16	TD直壓式夾模器	TD Die Clamp (Long Stroke Type)
17	特殊型夾模器	Special Die Clamp
18	TAX自走式夾模器	TAX Die Clamp (Auto Moving Type)
19	TR旋轉型夾模器	TR Die Clamp (90° Rotary Type)
20	TS搖擺型夾模器	TS Die Clamp (Swing Type)
21	DR彈簧式舉模器	DR Die Lifter
22	DR/ DU彈簧式舉模器	DR/ DU Die Lifter
23	DL油壓式舉模器(滾輪型)	DL Die Lifter (Roller Type)
26	DLM油壓式舉模器(滾輪型)	DLM Die Lifter (Roller Type)
27	DB油壓式舉模器(滾珠型)	DB Die Lifter (Ball Type)
30	滾珠型舉模器最大載重說明	Why DB Die Lifters Have Limited Loading
31	RC/ RD/ RE/ RF移模臂選用	RC/ RD/ RE/ RF Die Arm
36	過負荷泵浦	Overload Pump
37	相關零件	Related Products for Press Machines
38	訂購資料表	Quotation Request Form

快速換模系統元件組成 QDCS Units Introduction

夾模器 Die Clamp Series

可分TX, TY, TY-B, TX-C, TY-BS, TY-S, TD, TAX, TR, TS十種夾模器，
詳述於第12~20頁。

For details, refer to pages 12~20.

TX, TY, TY-B, TX-C, TY-BS, TY-S, TD, TAX, TR, TS Die Clamp



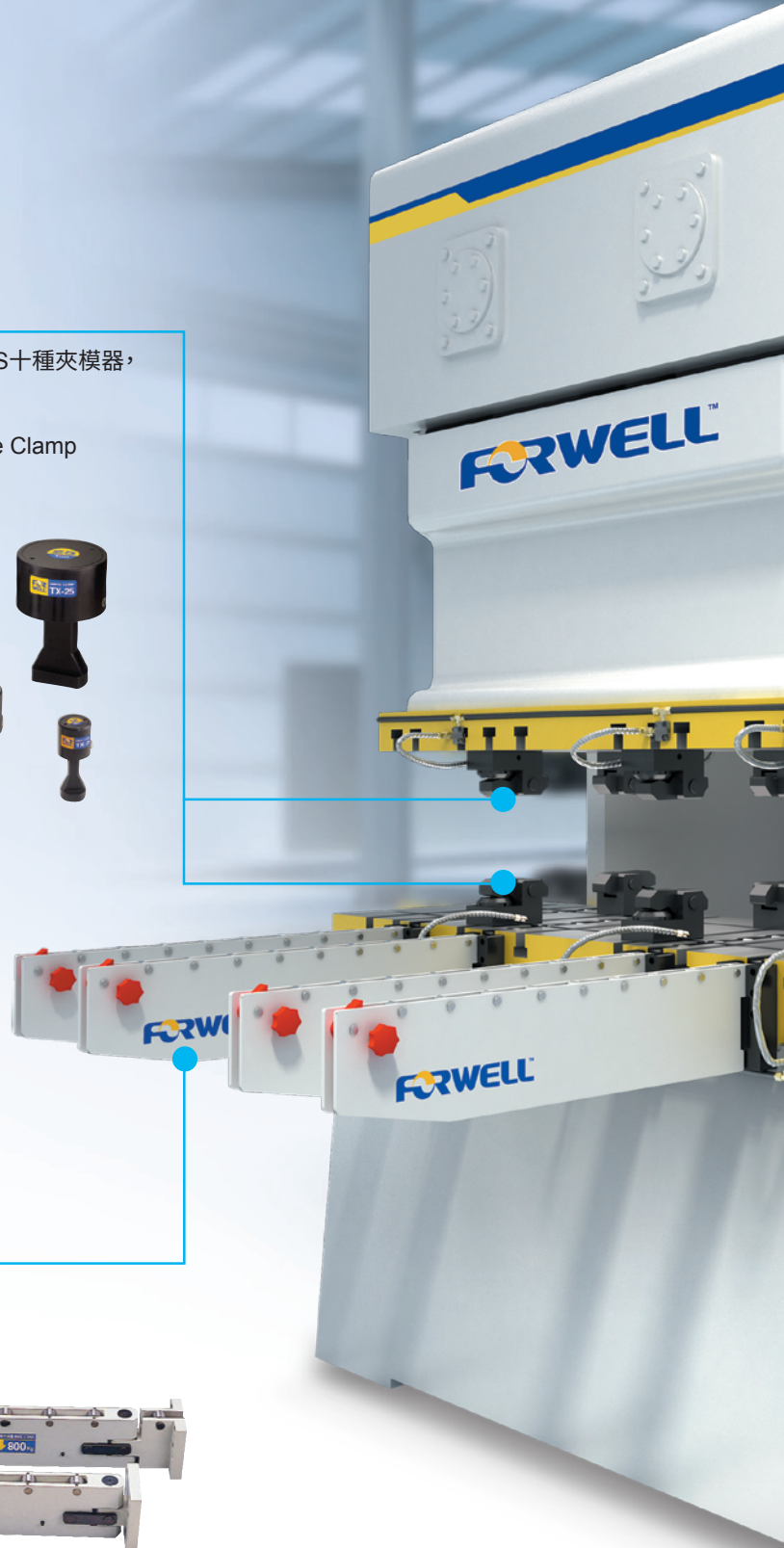
移模臂 Die Arm Series

共有RC, RD, RE, RF四種型式，詳述於第31~35頁。

RC型移模臂, RD型移模臂, RE/RF型移模臂

For details, refer to pages 31~35.

RC, RD, RE/RF Die Arm

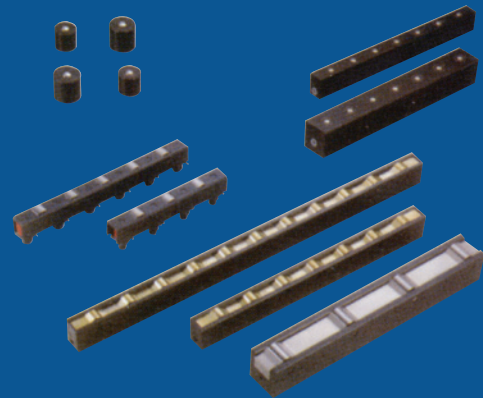


電器箱 Electrical System



舉模器 Die Lifter Series

計有DL, DU, DR, DB四種, 詳見第21~30頁。
DL型舉模器(油壓式), DB型舉模器(滾珠式), DR/DU型舉模器(彈簧式)
For details, refer to pages 21~30.
DL Die Lifter, DB Die Lifter, DR/DU Die Lifter



氣動泵組合 Power Unit

以氣動方式作動, 出力為油壓, 詳見8~11頁。
氣動泵組合(1迴路 / 2迴路 / 3迴路 / 4迴路)
For details, refer to pages 8~11.
Power Unit Selection of System Components
(1 Circuit / 2 Circuits / 3 Circuits / 4 Circuits)



富偉QDCS的商業效益

Benefits of FORWELL QDCS



直接效益 Direct Benefits

減少換模時間
Reduced die change time

多種少量的生產
Diverse products
in small lots

減少存貨
Reduced inventory

產量與品質改善
Improved
productivity & quality

降低勞力成本
Reduced labor costs

各種效益大大增進
企業競爭能力
**Efficiency &
Competitiveness**

間接效益 Indirect Benefits

模具標準化
Die standardization

沖床標準化
Press standardization

增加操作安全
Increased safety

達成快速產銷
Prompt delivery

改善工廠環境
Improved shop
conditions & environment

富偉QDCS提供給各式沖床模具多樣性的快速換模專用元件，此系統的使用，不僅降低了沖床的閒置時間，並且大大的促進了產能的提昇，使得生產管理更為合理化。

FORWELL's QDCS not only reduces press downtime due to die changes, but also greatly improves productivity and streamlines production management.

組件選用基準

Selection of System Components

富偉QDCS提供了最大適用性與多樣性產品，以獨特的系列化設計理念，求取與沖床模具的最佳搭配，您所需求的最佳系統元件組合，可參照下列說明：

FORWELL's QDCS provides maximum flexibility to accommodate diversification in presses and dies with its unique serialized design concept of components and equipment. For the system configuration best suited to your needs, please refer to the following chart.

A 標準油壓迴路規劃

Standard Hydraulic Circuits

(性能規格詳載於第8~11頁) (For details, refer to pages 8~11)

迴路數 No. of Circuits	迴路型式 Circuit Code	迴路分配使用情形	System Configuration
1	C →	迴路使用於夾持上模	One circuit for clamping upper die
	D →	迴路使用於夾持下模	One circuit for clamping lower die
2	2C →	迴路使用於同時夾持上下模	One circuit for simultaneously clamping upper and lower dies
	D →	迴路使用於舉模器	One circuit for lifters
2	2C →	一個迴路使用於夾持上模，且另一個迴路使用於下模	One circuit for upper die One circuit for lower die
	CD →	一個迴路使用於同時夾持上下模，且另一個迴路使用於舉模器	One circuit for simultaneously clamping upper and lower dies One circuit for lifters
3	2CD →	一個迴路使用於夾持上模，另一個迴路使用於下模，且第三個迴路使用於舉模器	Two circuits for clamping upper and lower dies One circuit for lifters
4	3CD →	二個迴路使用於夾持上模交叉方式，另一個迴路使用於夾持下模，且第四個迴路使用於舉模器	Two circuits for clamping upper die One circuit for clamping lower die One circuit for lifters

★ 以上表根據迴路數與迴路的閥型，規劃迴路的分配使用情形，其中迴路型式C為常開閥，D為常閉閥。

The above list is planned according to the number of circuits and valves plan to the necessity of the usage. In between the circuit type "C" means ON at all time and "D" means OFF at all time.

B 選擇夾模器

Selection of Clamps

(性能規格詳載於第12~20頁) (For details, refer to pages 12~20)

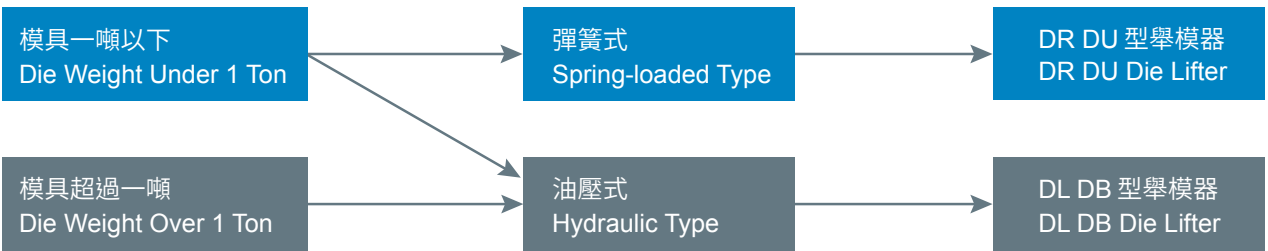
基本型式之選定 Basic Clamp Selection 模具邊沿有"U"溝設計，採用TX型 模具邊沿無"U"溝設計，採用TY型 Select TX Clamp when die U-slots provided. Select TY Clamp when die U-slots not provided.	夾模器數量 Determine the Number of Clamps Required 根據模具的大小與沖床出力的噸數來決定 Determine the number of clamps according to the dimensions and configuration of the dies and the T-slot arrangement on the press.
夾模器夾持力的計算 Determine the Clamping Force (Model) (夾模器總夾持力) = (沖床沖壓能力20%) (Clamping Force) = (20% Press Tonnage)	上下模所需夾持力的分配 Distribution of Upper and Lower Clamping Force (上模夾持力) : (下模夾持力) = 3 : 2 (Clamping Upper Die) : (Clamping Lower Die) = 3 : 2 (單一夾模器夾持力) = (上模或下模夾持力) ÷ 夾模器數量 (Single Die Clamping Force) = (Upper or Lower Die Clamping Force) ÷ Clamps Quantity

組件選用基準 Selection of System Components

C 選擇舉模器 Selection of Die Lifters

(性能規格詳載於第21~30頁) (For details, refer to pages 21~30)

彈簧式或油壓式之選定	Select Spring-loaded or Hydraulic Die Lifter
依據模具重量選擇DL/ DB型(油壓式)或DR/ DU型(彈簧式)並選擇所需之舉模器長度	Select spring-loaded (DR/ DU) or hydraulic (DL/ DB) type according to die weight, and the die positioning accuracy required.



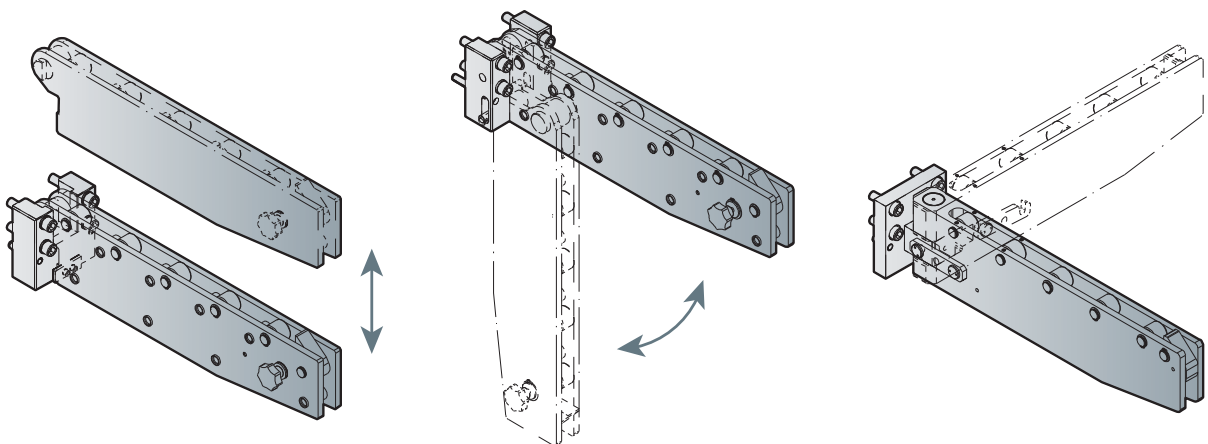
選用基準 舉模器長度/ 舉模能力/ 最大承載重量/ "U"型溝尺寸/ 配管配件

Selection Criteria Die Lifter Length/ Lift Capacity/ Maximum Die Lifter Load Weight/ U-slot Size/ Accessories

D 選擇移模臂 Selection of Die Arms

(性能規格詳載於第31~35頁) (For details, refer to pages 31~35)

基本型式之選定 Basic Selections		
RC型 (移動式) Detachable Type	RD型 (折下式) Drop-down Type	RE/RF型 (旋轉式) Folding Type

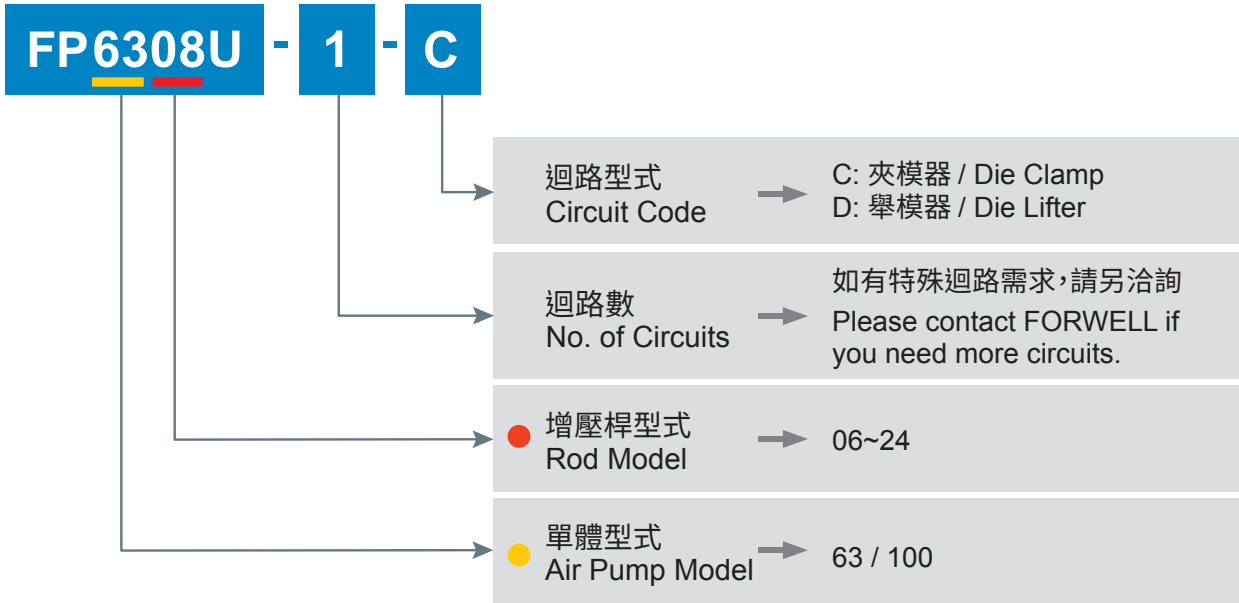


選用基準 模具尺寸/ 移模臂最大承載重量/ 型式

Selection Criteria Die Dimensions/ Maximum Die Arm Load Weight/ Type

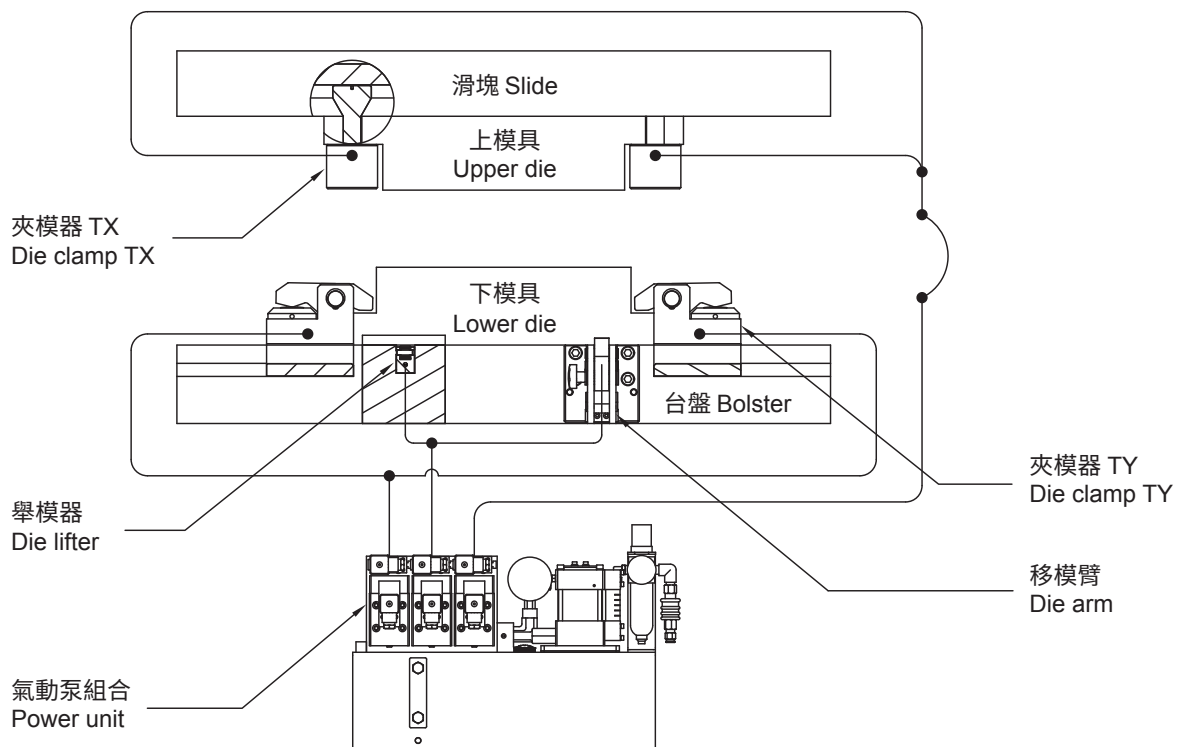
型式表示法

Explanation of Model Numbers



配管示意圖

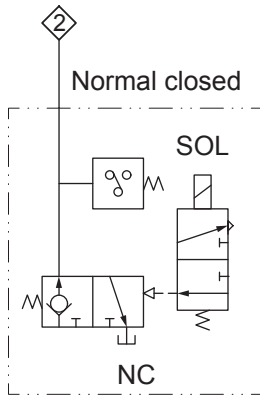
Hydraulic Schematic



氣動泵組合選用 Power Unit-Selection of System Components

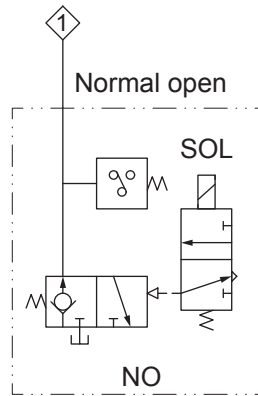
油壓系統迴路圖 Hydraulic Schematics (Typical)

NC 迴路 NC Circuit
(舉模器 Die Lifter)



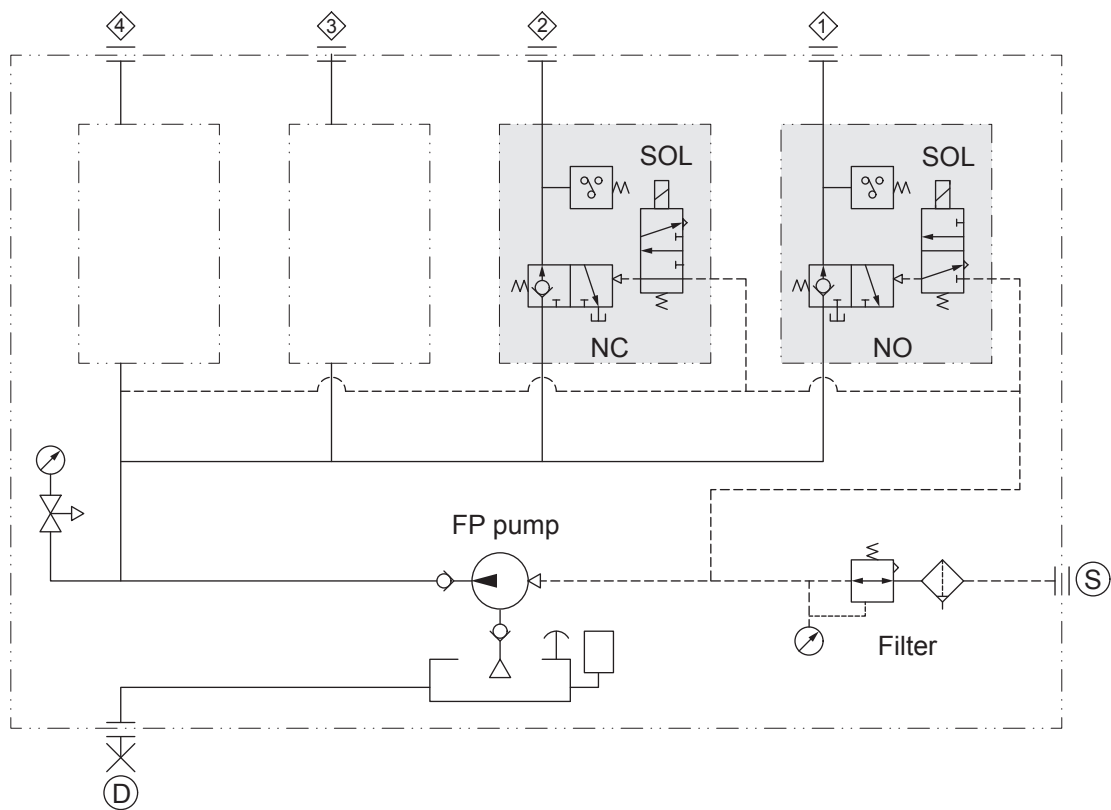
SOL → ON 壓力上昇 Pressure rise

NO 迴路 NO Circuit
(夾模器 Die Clamp)



SOL → OFF 壓力上昇 Pressure rise

迴路圖例 Combined Circuit Example



●訂貨時請指定電磁閥 (SOL) 使用電壓 (DC 24V, AC110V, AC220V)
When ordering, please confirm the voltage of the solenoid valve.

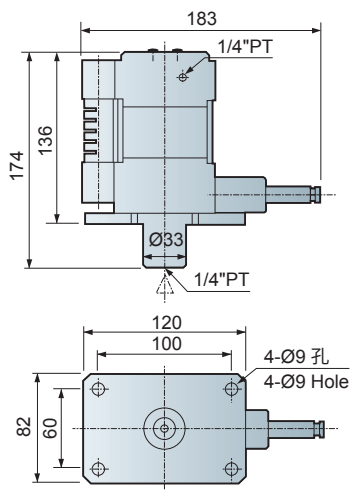
FP63 氣動泵組合 Power Unit



大陸專利號：ZL 2010 2 0528346.6
China Patent No: ZL 2010 2 0528346.6

驅動流體	Drive Fluid	空氣 Air
空氣使用壓力範圍	Air Pressure	2~6 kg/cm ² (2~6 bar)
使用溫度範圍	Operating Temperature	-5~60°C
使用油	Lubricant	一般液壓作動油 (ISO VG32-VG68) Standard hydraulic oil
單一重量	Net Weight/set	4 kg

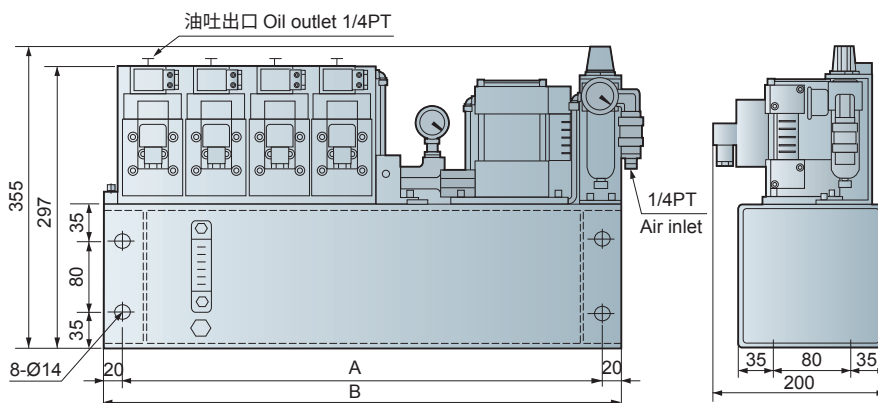
●空氣消耗量為MAX=0.35Nm³/min. Air consumption MAX=0.35Nm³/min.



特性規格 Specifications

FP63	空氣壓力5kg/cm ² 時壓力 At 5kg/cm ² Air Pressure	增壓比 Pressure Ratio	吐出油量 Oil Volume Output
06	420 (kg/cm ²)	1 : 84	0.45 (L/min)
07	300 (kg/cm ²)	1 : 60	0.6 (L/min)
08	250 (kg/cm ²)	1 : 50	0.7 (L/min)
09	200 (kg/cm ²)	1 : 40	0.9 (L/min)
10	150 (kg/cm ²)	1 : 30	1.1 (L/min)
12	100 (kg/cm ²)	1 : 20	1.7 (L/min)
14	80 (kg/cm ²)	1 : 16	2.2 (L/min)
16	50 (kg/cm ²)	1 : 10	2.7 (L/min)
20	40 (kg/cm ²)	1 : 8	4.5 (L/min)
24	26 (kg/cm ²)	1 : 5	6.4 (L/min)

外型尺寸 Dimensions



型號 Model	迴路數 Total Circuits	A	B	油箱全容量 (L) Reservoir Capacity	可用容量 (L) Available Lubricant	重量 Net Weight (kg)	使用油 Lubricant
FP63□□U	1	353	393	6	4.7	23	一般液壓作動油 ISO VG32- VG68 Standard hydraulic oil
FP63□□U	2	353	393	6	4.7	27	
FP63□□U	3	423	463	7.5	5.9	35	
FP63□□U	4	493	533	9	7.1	43	

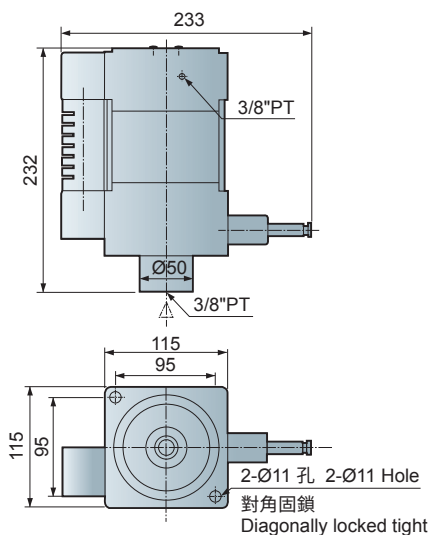
FP100 氣動泵組合 Power Unit



驅動流體	Drive Fluid	空氣 Air
空氣使用壓力範圍	Air Pressure	2~6 kg/cm ² (2~6 bar)
使用溫度範圍	Operating Temperature	-5°~60°C
使用油	Lubricant	一般液壓作動油 (ISO VG32-VG68) Standard hydraulic oil
單一重量	Net Weight/set	11 kg

●空氣消耗量為MAX=0.8Nm³/min. Air consumption MAX=0.8Nm³/min.

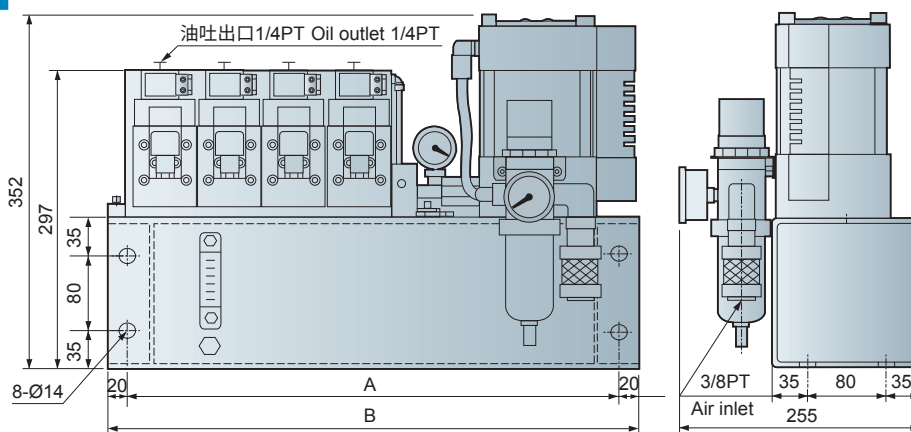
大陸專利號：ZL 2010 2 0528346.6
China Patent No: ZL 2010 2 0528346.6



特性規格 Specifications

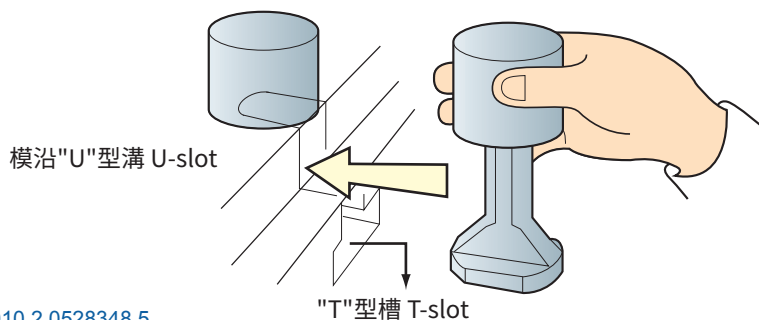
FP100	空氣壓力5kg/cm ² 時壓力 At 5kg/cm ² Air Pressure	增壓比 Pressure Ratio	吐出油量 Oil Volume Output
08	650 (kg/cm ²)	1 : 130	0.9 (L/min)
09	500 (kg/cm ²)	1 : 100	1.15 (L/min)
10	420 (kg/cm ²)	1 : 84	1.4 (L/min)
12	300 (kg/cm ²)	1 : 60	2.04 (L/min)
14	220 (kg/cm ²)	1 : 44	2.4 (L/min)
16	175 (kg/cm ²)	1 : 35	3.2 (L/min)
18	125 (kg/cm ²)	1 : 25	4 (L/min)
20	100 (kg/cm ²)	1 : 20	4.9 (L/min)
24	60 (kg/cm ²)	1 : 12	8.14 (L/min)

外型尺寸 Dimensions



型號 Model	迴路數 Total Circuits	A	B	油箱全容量 (l) Reservoir Capacity	可用容量 (l) Available Lubricant	重量 Net Weight(kg)	使用油 Lubricant
FP10□□U	1	353	393	6	3.8	30	一般液壓作動油 ISO VG32-VG68 Standard hydraulic oil
FP10□□U	2	353	393	6	3.8	34	
FP10□□U	3	423	463	7.5	4.8	42	
FP10□□U	4	493	533	9	5.8	50	

TX 夾模器 Die Clamp



大陸專利號：ZL 2010 2 0528348.5
China Patent No: ZL 2010 2 0528348.5

此型夾模器有節省空間的好處，但模沿須有"U"型溝供其夾持，其底部被製成適合在台盤"T"型槽滑動。

This compact, space saving, piston type clamp requires U-slots on the die shoe. The clamp leg is machined to fit the T-slot on the bolster. The automatic slide model makes remote control possible.

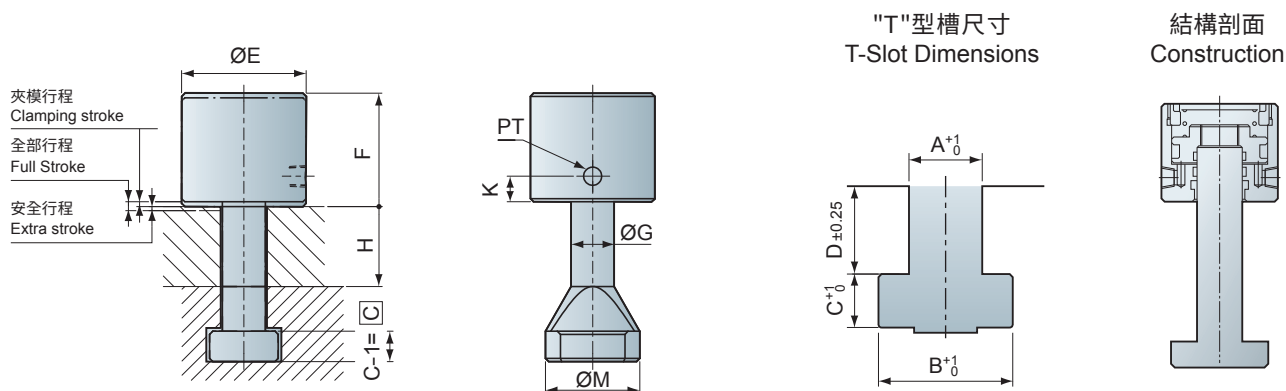
特性規格 Specifications

型號 Model	Unit	TX-1	TX-2	TX-4	TX-6	TX-10	TX-16	TX-25
夾持力 (於油壓250kg/cm ²) Clamping Force (at 250kg/cm ²)	tons	1	2	4	6.3	10	16	25
全部行程 (X) Full Stroke	mm	5	8	8	8	8	8	8
夾模行程 (Y) Clamping Stroke	mm	2.5	4	3	3	3	3	3
安全行程 (Z) Extra Stroke	mm	2.5	4	5	5	5	5	5
夾模器缸體容量 (全行程) Cylinder Capacity at Full Stroke	cc.	2.7	6.5	13	21	32	54	84

●安全行程為全部行程與夾模行程之差值，為特別的安全預留量。

Extra stroke is the difference between full stroke and clamping stroke with extra space allowed for operation safety.

外型尺寸 Dimensions



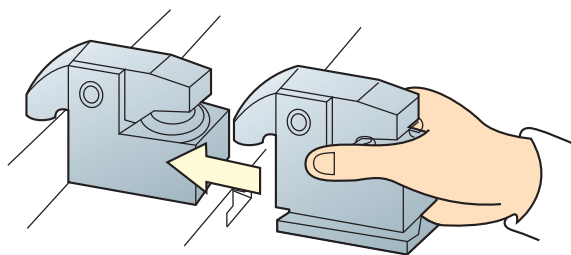
型號 Model	E	F	G	M	K	min. C	PT	A	B	C	D	選用泵浦 Power Unit Models
TX-1	38	38	14	35	11	8	1/8	22	37	16	24	FP6308U-□-□
TX-2	53	52.5	18	38	12	8	1/8	22	37	16	24	
TX-4	68	61.5	23	59	15	10	1/4	22	37	16	24	
TX-6	78	68	27	59	16	14	1/4	28	48	20	28	FP1014U-□-□
TX-10	98	71	38	79	16	17	1/4	28	48	20	28	
TX-16	127	78.5	48	88	16	20	1/4	28	48	23	28	
TX-25	148	100	58	98	15	23	1/4	36	56	25	28	

●模厚建議：25, 30, 35, 40, 45, 50, 55, 60mm

●模沿厚度(h)及"T"型槽(A.B.C.D.)尺寸如為既有(特殊)尺寸，請於訂購時確認之。

Before purchasing, please verify if the die edge thickness (h) and T-slot (A.B.C.D.) have standard or special dimensions.

TY 夾模器 Die Clamp



大陸專利號：ZL 2010 2 0529011.6
China Patent No: ZL 2010 2 0529011.6

此型夾模器以槓桿原理作用，夾持模沿，並不需"U"型溝，因此有更寬廣的適用範圍。

Because this lever-type clamp does not require a U-slot on the die shoe it may be used in a wide range of applications. The base of the clamp is machined to fit the T-slot on the bolster. The flange-mount model clamp may be bolted onto the bolster. The automatic slide model makes remote control possible.



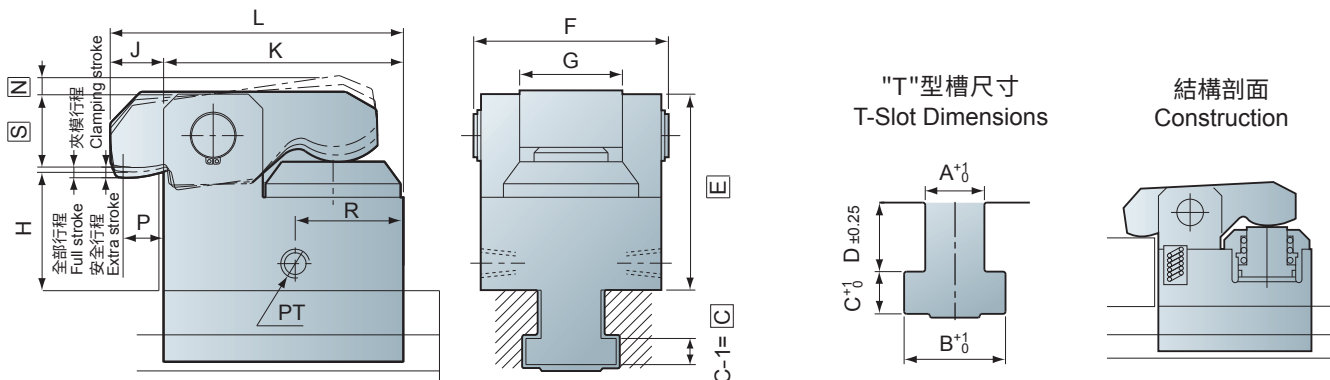
特性規格 Specifications

型號 Model	Unit	TY-1	TY-2	TY-4	TY-6	TY-10	TY-16	TY-25	TY-35
夾持力(於油壓250kg/cm ²) Clamping Force (at 250kg/cm ²)	tons	1	2	4	6.3	10	16	25	35
全部行程(X) Full Stroke	mm	6	7	7	8	8	8	8	8
夾模行程(Y) Clamping Stroke	mm	3	2	3	3	3	3	3	3
安全行程(Z) Extra Stroke	mm	3	5	4	5	5	5	5	5
夾模器缸體容量(全行程) Cylinder Capacity at Full Stroke	cc.	2	6.5	13.2	22.3	37	61	93	133

●安全行程為全部行程與夾模行程之差值，為特別的安全預留量。

Extra stroke is the difference between full stroke and clamping stroke with extra space allowed for operation safety.

外型尺寸 Dimensions



型號 Model	min. E	F	G	J	K	L	max. N	P	R	min. S	PT	min. C	A	B	C	D	選用泵浦 Power Unit
TY-1	49.5	46	20	15	58	73	10	10	34	16.5	1/8	7	22	37	16	24	FP6308U-□-□
TY-2	59	63	28	22	85	107	10	12.5	48	27	1/8	9.5	22	37	16	24	
TY-4	85	87	40	25	120	145	10	16	58	33	1/4	12	22	37	16	24	
TY-6	94	97	44	29.5	133	162.5	11	20	68	40	1/4	14	28	48	20	28	
TY-10	105	110	50	28	165	193	11	20	82	53	1/4	16.5	28	48	20	28	FP1014U-□-□
TY-16	120	130	60	30	200	230	12	20	96	67	1/4	19	28	48	23	28	
TY-25	133	150	73	30	240	270	13	20	110	81	1/4	22	36	56	25	28	
TY-35	143	170	80	30	280	310	15	20	30	90	1/4	25	40	70	30	40	

●模厚建議: 25, 30, 35, 40, 45, 50, 55, 60mm

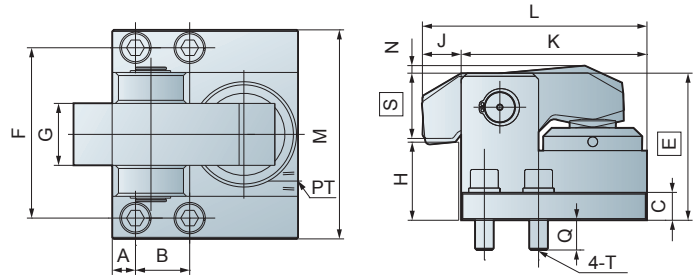
●模沿厚度(h)及"U"型槽(A.B.C.D.)尺寸如為既有(特殊)尺寸，請於訂購時確認之。

Before purchasing, please verify if the die edge thickness (h) and T-slot (A.B.C.D.) have standard or special dimensions.

TY-B 固定式夾模器 Die Clamp (Fixed Type)



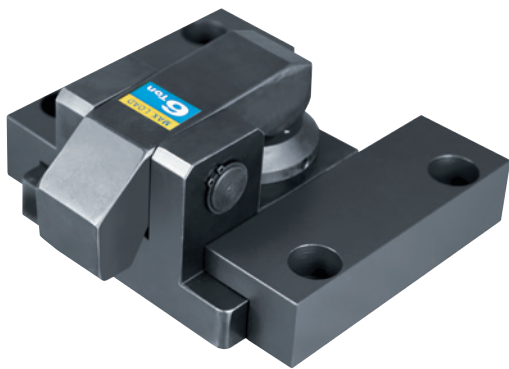
外型尺寸 Dimensions



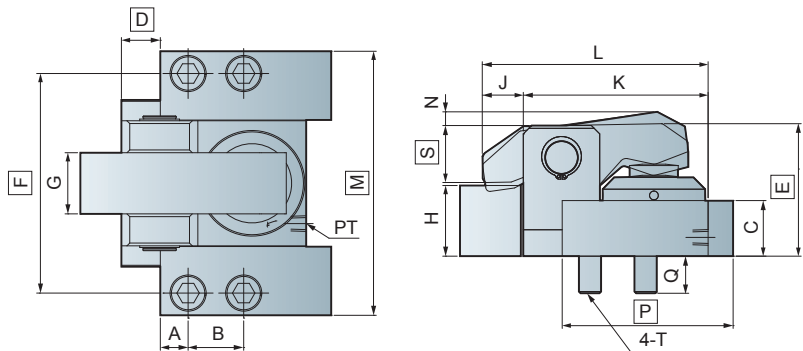
此型夾模器適用於無 "T" 型槽的機台。
This clamp is suitable for a bolster without T-slots.

型號 Model	A	B	C	min. E	F	G	M	J	K	L	N	min. S	PT	T	Q
TY-1B	10	25	15	49.5	60	20	80	15	58	73	10	16.5	1/8	M8x1.25P	13
TY-2B	15	30	12	59	80	28	100	22	85	107	10	27	1/8	M10x1.5P	16
TY-4B	15	35	18	85	110	40	135	25	120	145	10	32	1/4	M12x1.75P	19
TY-6B	20	40	25	94	120	44	150	29.5	136	165.5	11	40	1/4	M14x2.0P	21.5
TY-10B	20	40	28	105	135	50	170	28	165	193	14	52	1/4	M16x2.0P	24
TY-16B	25	45	30	120	160	60	200	29	200	229	11.5	67	1/4	M20x2.5P	31
TY-25B	25	50	32	133	190	73	240	30	240	270	12	80	1/4	M24x3.0P	33.5

TY-BS 滑軌式夾模器 Die Clamp (Sliding Type)



外型尺寸 Dimensions



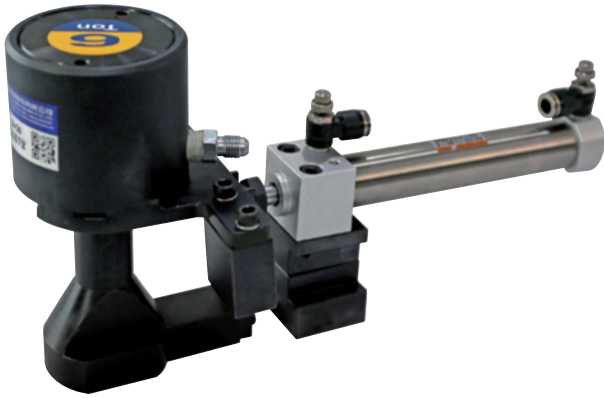
此型夾模器適用於無 "T" 型槽的機台，其可短距離移動。
This clamp is suitable for a bolster without T-slots and is able to move slightly.

型號 Model	A	B	C	max. D	min. E	min. F	G	J	K	L	min. M	N	min. P	min. S	PT	T	Q
TY-1BS	10	25	27	11	49.5	80	20	15	58	73	100	10	50	16.5	1/8	M8x1.25P	13.5
TY-2BS	15	30	27	15	59	104	28	22	85	107	130	10	80	27	1/8	M10x1.5P	15
TY-4BS	15	35	35	25	85	134	40	25	120	145	162	10	110	32	1/4	M12x1.75P	17
TY-6BS	20	40	40	28	94	158	44	29.5	133	162.5	190	11	123	40	1/4	M14x2.0P	21.5
TY-10BS	20	40	50	32	105	170	50	28	165	193	204	11	145	53	1/4	M16x2.0P	23.5
TY-16BS	25	45	55	40	120	200	60	30	200	230	242	12	170	67	1/4	M20x2.5P	29.5
TY-25BS	25	50	60	50	133	230	73	30	240	270	278	13	190	81	1/4	M24x3.0P	34

TX-C 自動推拉夾模器 Die Clamp (Automatic Type)

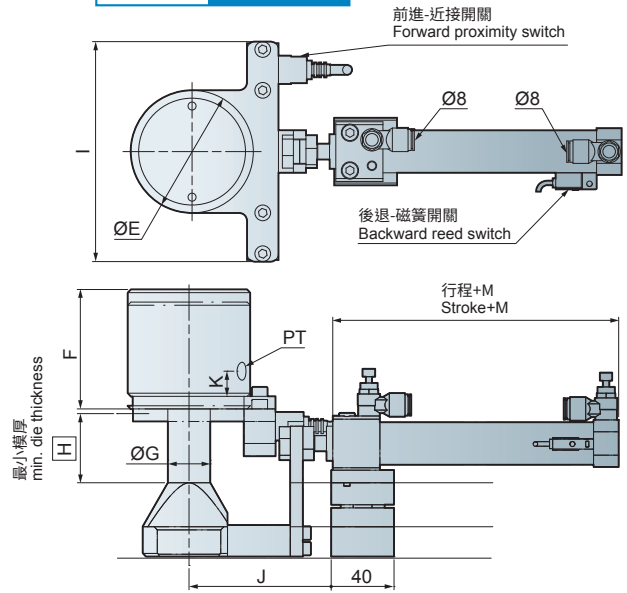
氣動泵 Power Unit

夾模器 Die Clamp



此型夾模器可自動前進夾模、鬆模後退。
Moving forward and backward automatically.

外型尺寸 Dimensions



型號 Model	E	F	G	I	min. H	當模厚不足45時 max. J	當模厚大於45時 min. J	K	M	PT	氣缸規格 Air Cylinder
TX-4C	68	69.5	23	140	30	92	52	15	82	1/4	MB25*Stroke
TX-6C	78	76	27	140	30	98	58	16	82	1/4	MB25*Stroke
TX-10C	98	79	38	160	30	102	62	16	82	1/4	MB25*Stroke

●建議氣缸行程300mm以下。 TX-C is suitable for moving stroke less than 300mm.

舉模器 Die Lifter

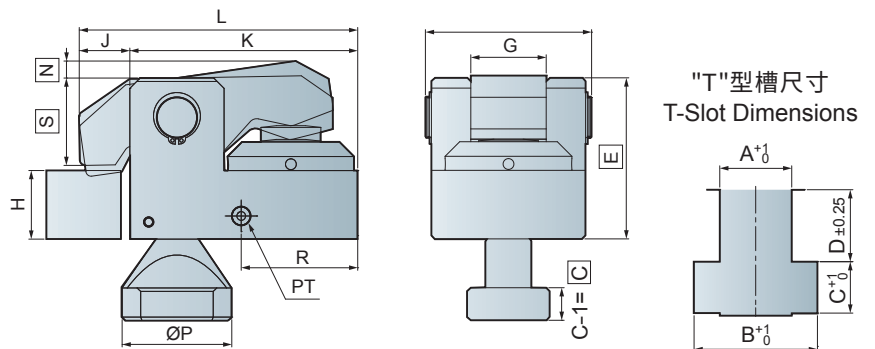
TY-S 旋轉式夾模器 Die Clamp (Rotary Type)

移模臂 Die Arm

配件 Accessories



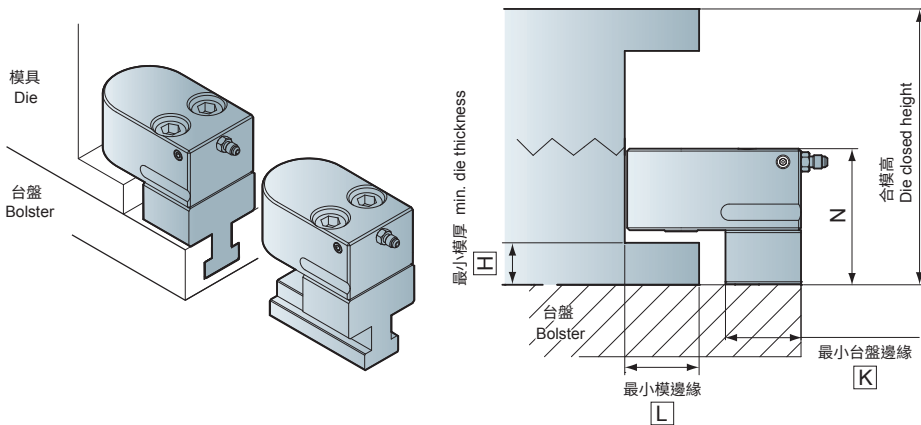
外型尺寸 Dimensions



此型夾模器本體可以360°旋轉。
This clamp's body can be rotated 360°.

型號 Model	min. E	F	G	J	K	L	max. N	ØP	R	min. S	PT	min. C	A	B	C	D
TY-2S	59	63	28	22	85	107	10	38	48	27	1/8	9.5	22	37	16	24
TY-4S	85	87	40	25	120	145	10	59	58	32	1/4	12	22	37	16	24
TY-6S	94	97	44	29.5	133	162.5	11	64	68	40	1/4	14	28	48	20	28
TY-10S	105	110	50	28	165	193	11	64	82	53	1/4	16.5	28	48	20	28
TY-16S	120	130	60	30	200	230	12	88	96	67	1/4	19	28	48	23	28

TD 直壓式夾模器 Die Clamp (Long Stroke Type)



此型夾模器以垂直油壓方式，夾持模沿，不需要"U"型溝，具有較大夾模行程。
This vertical type clamp does not require a U-slot on the die shoe.
The clamping stroke is longer.

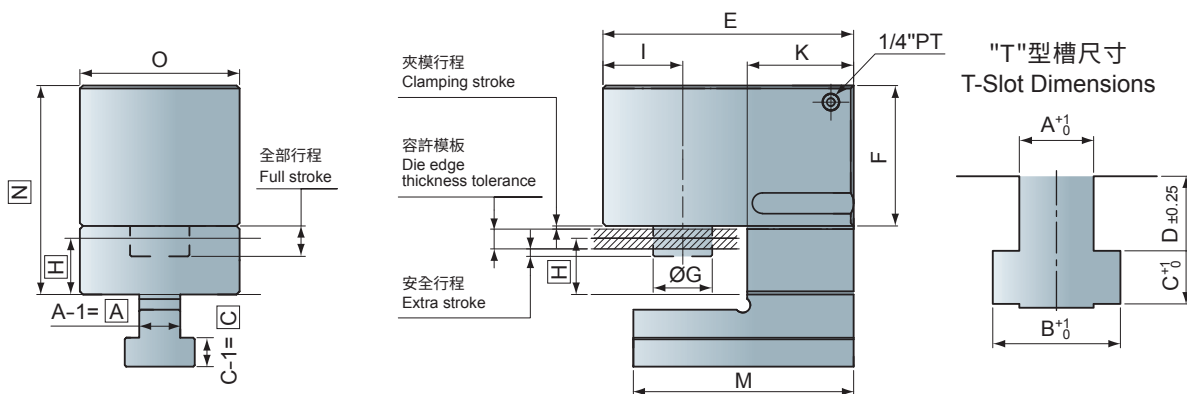
特性規格 Specifications

型號 Model	Unit	TD-2	TD-4	TD-6	TD-10	型號 Model	最小模厚 min. [H]	最小模邊緣 min. [L]	最小台盤邊緣 min. [K]
夾持力(於油壓250kg/cm ²) Clamping Force (at 250kg/cm ²)	tons	2	4	6.3	10	TD-2	15	38.5	50
全部行程(X) Full Stroke	mm	13	15	15	20	TD-4	24	54	58
夾模行程(Y) Clamping Stroke	mm	2	2	2	3	TD-6	29	59	63
容許模板 Die Edge Thickness Tolerance	mm	±3	±4	±4	±6	TD-10	29	72	70
安全行程(Z) Extra Stroke	mm	5	5	5	5				
夾模器缸體容量(全行程) Cylinder Capacity at Full Stroke	cc.	12.5	30	42.5	89				

●需注意N值是否適用於機台合模高
Notice if "N" size is suitable for the die in closed condition.

●安全行程為全部行程與夾模行程之差值，為特別的安全預留量。
Extra stroke is the difference between full stroke and clamping stroke with extra space allowed for operation safety.

外型尺寸 Dimensions



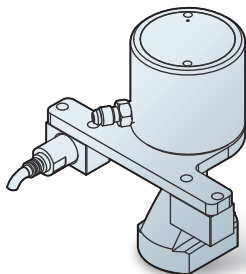
型號 Model	E	F	G	I	K	M	O	min. [N]	min. [A]	min. [C]	A	B	C	D	選用泵浦 Power Unit	min. [H]
TD-2	107	57	17	30	50	102	61	80	12.5	9.5	22	37	16	24	FP6308U-□-□	15
TD-4	130	63	28	40	58	120	80	88	15	12	22	37	16	24	FP1014U-□-□	15
TD-6	145	68	28	45	63	130	90	103	19	14	28	48	20	28		25
TD-10	165	92.5	39	52.5	70	145	105	132.5	23	16.5	28	48	20	28		25

●模沿厚度(h)及"U"型槽 (A.B.C.D.) 尺寸如為既有 (特殊) 尺寸，請於訂購時確認之。
Before purchasing, please verify if the die edge thickness (h) and T-slot (A.B.C.D.) have standard or special dimensions.

特殊型夾模器 Special Die Clamp

機台特殊或額外功能選配需求,可參考以下特殊型夾模器。

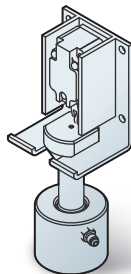
For customized machines or extra function requirements, there are more choices below.



Model TX-CS

含近接開關夾模器
With a proximity switch

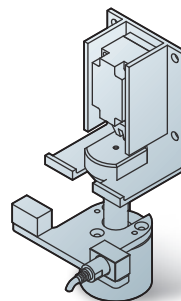
可偵測夾模器是否確實碰到模具
It is able to detect die touched by clamps.



Model TX-CL

夾具架含限動夾模器
With a limited switch

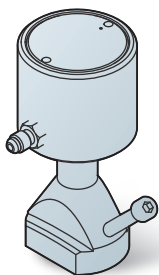
偵測夾模器是否已掛回夾具架上
It is able to detect clamps on hangers.



Model TX-CH

含近接開關及夾具架含限動夾模器
With a proximity and a limited switch

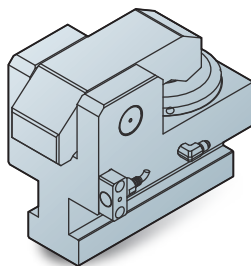
偵測夾模器是否確實碰到模具及掛回夾具架上
It is able to detect die and clamping on right positions.



Model TX-T

鎖固螺絲夾模器
With a bolt, fixed on a T slot

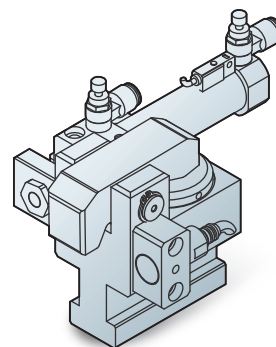
當模具尺寸固定時可從後方夾具固定位置
It can be fixed at rear side.



Model TY-CS

含近接開關夾模器
With a proximity switch

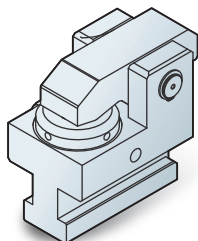
可偵測夾模器是否確實碰到模具
It is able to detect die touched by clamps.



Model TY-C

自動推拉夾模器
With an air cylinder

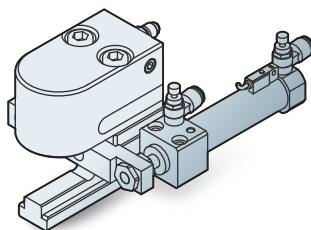
夾模器可自動前進夾模、鬆模後退
Moving forward and backward automatically.



Model TY-H

耐熱夾模器
Heat resistance

採用耐熱型O型環耐熱溫度可達160度
Equipped with heat resistance orings up to 160°.



Model TD-C

自動推拉夾模器
With an air cylinder

夾模器可自動前進夾模、鬆模後退
Moving forward and backward automatically.

註: 如有特殊規格需求,請另洽詢
Note: If you have any further requirements, please contact us.

TAX 自走式夾模器 Die Clamp (Auto Moving Type)



大陸專利號：ZL 2014 2 0428525.0
China Patent No: ZL 2014 2 0428525.0

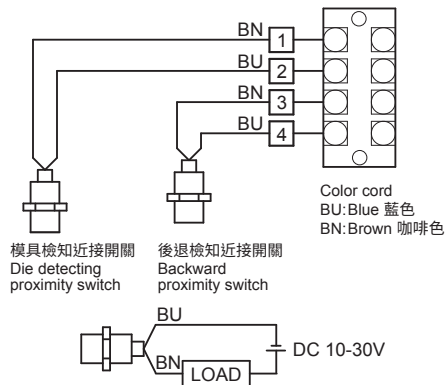
利用氣壓機構作動，使夾模器獨立進行夾持，適合大型油壓機上模使用。
Self-traveling clamp exclusive for slide driven by air type actuator.

型式表示法 / Model

TAX - 4 - 300 - R

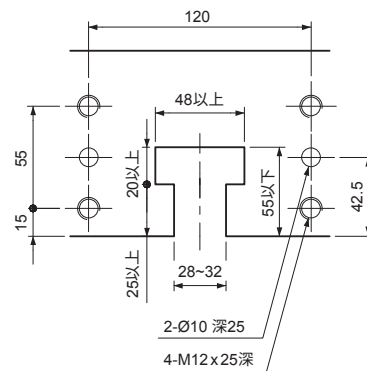
L:左 Left
R:右 Right
行程 Stroke (mm)
夾持力 Clamping force

端子盒配電示意圖

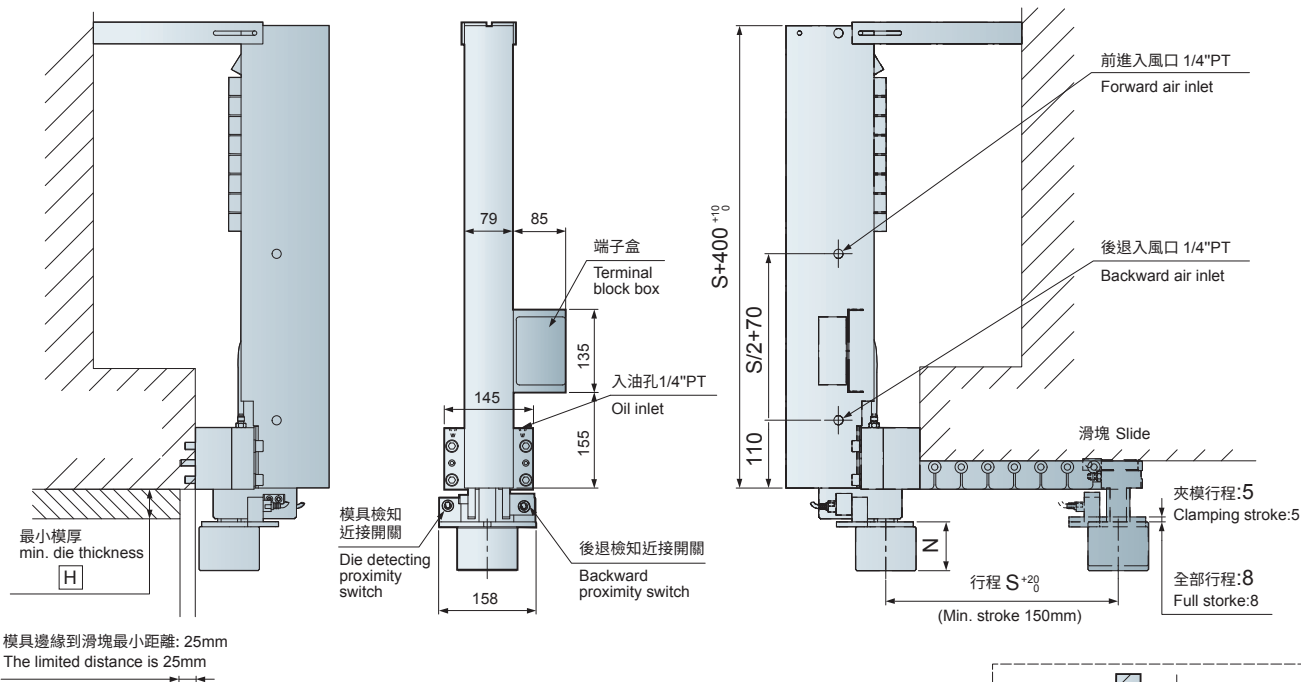


端子盒配電示意圖 Wiring diagram

客戶滑塊固定孔位及 "T" 型槽尺寸範圍



外型尺寸 Dimensions



型號 Model	F	N	P	min. Q	min. H	適用氣動泵組合 Selection of Power Unit
TAX-4	68	69.5	55	69	40	FP1014U-□-□
TAX-6	78	76	55	74	40	
TAX-10	98	79	55	84	40	

TR 旋轉型夾模器 Die Clamp (90° Rotary Type)

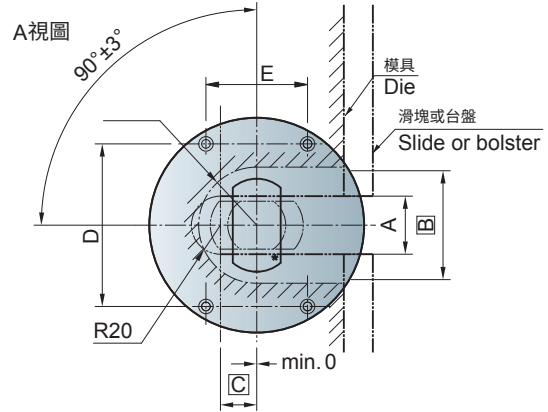
型式表示法 / Model

TR -

夾持力 Clamping force



外型尺寸 Dimensions



大陸專利號：ZL 2012 2 0212510.1
China Patent No: ZL 2012 2 0212510.1

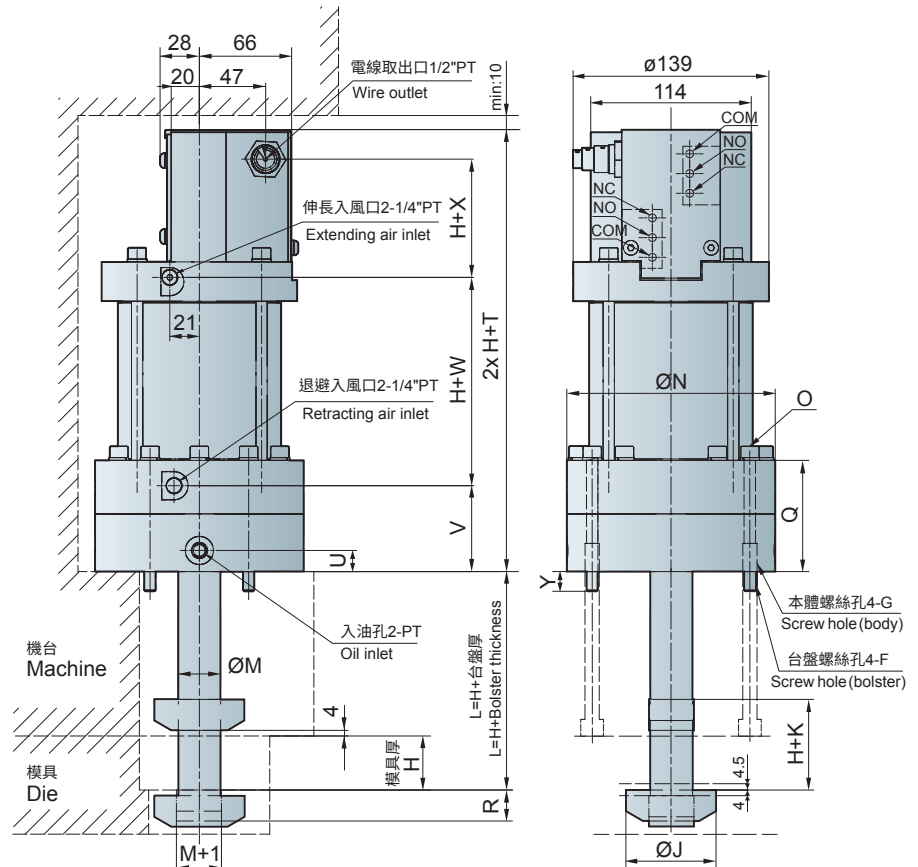
利用氣壓作動使夾模器旋轉90度
以油壓進行夾模動作。

The clamp rod is rotated 90° collapsed
and the clamp clamps by hydraulic
pressure.

選用氣動泵組合 Selection of Power Unit

TR-6	FP1016U-□-□
TR-10	
TR-16	

耐壓 Proof Pressure	275kg/cm ²
工作壓力 Working Pressure	180kg/cm ²
使用空氣壓力範圍 Working Pneumatic Range	4~7kg/cm ²
使用溫度範圍 Working Temperature Range	-5~ 60°C



型號 Model	A±1	min. B	min. C	D	E	F	G	J	K	M	N	O	PT	Q	R	T	U	V	W	X	Y
TR-6	40	75	25	112	70	M8x16深	M12x20深	64	30	32	148	M8x95L	1/4	79	22	232	15	61	108	44	14
TR-10	50	95	30	116	70	M10x25深	M14x30深	84	35	40	158	M10x110L	3/8	89	27	252	16	72	110	49	19
TR-16	60	110	37	120	76	M10x25深	M14x35深	99	40	50	168	M10x110L	3/8	94	32	267	16	79	115	54	14

氣動泵 Power Unit

夾模器 Die Clamp

舉模器 Die Lifter

移模臂 Die Arm

配件 Accessories

TS 搖擺型夾模器 Die Clamp (Swing Type)



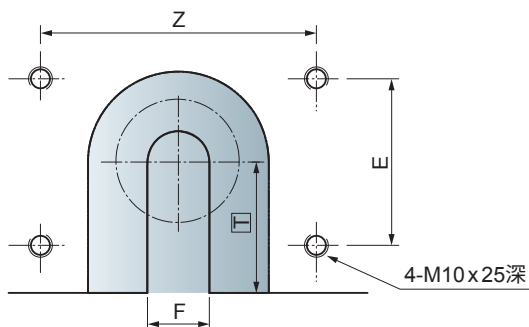
型式表示法 / Model

TS - []

夾持力 Clamping force

外型尺寸 Dimensions

滑塊"U"型溝位置設定
U-slot Position on Slide



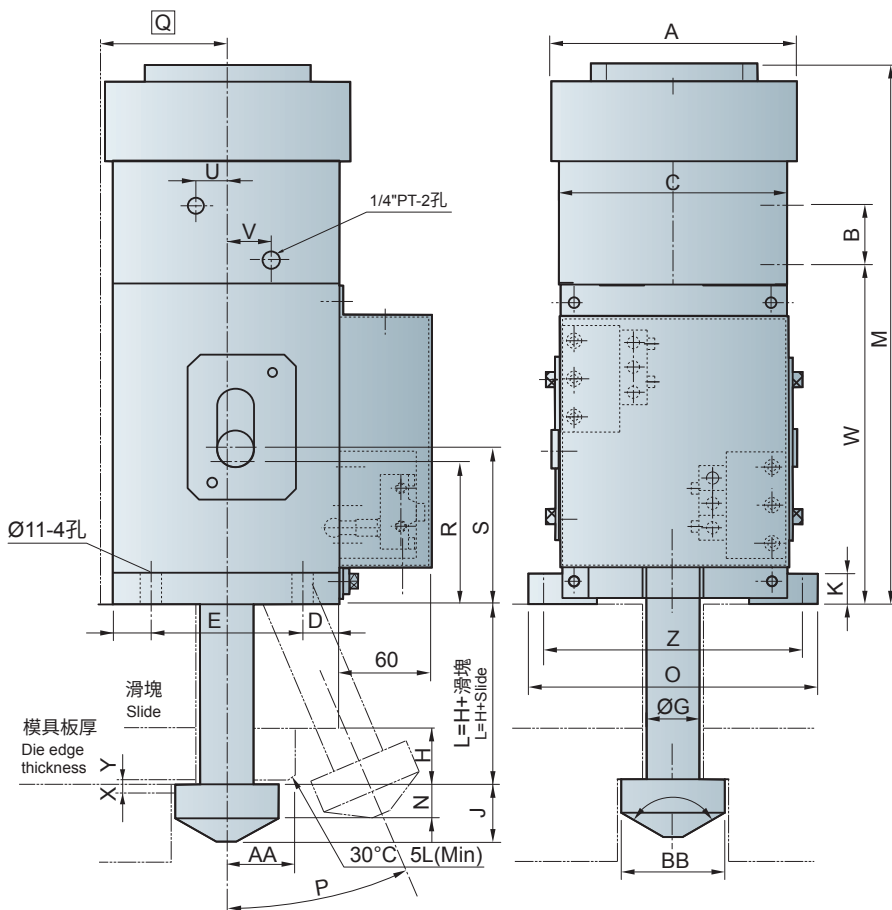
大陸專利號：ZL 2012 2 0209258.9
China Patent No: ZL 2012 2 0209258.9

油壓驅動使夾模器擺開換上模具後，
即擺入進行夾模。

Swing clamp, which is hydraulically
driven to clamp dies and plates.

選用氣動泵組合 Selection of Power Unit

TS-4	FP1016U-□-□
TS-6	
TS-10	
耐壓 Proof Pressure	275kg/cm ²
工作壓力 Working Pressure	180kg/cm ²
使用空氣壓力範圍 Working Pneumatic Range	-5~60°C
接點形式 Type of Contact	單軸雙切 Single Pole Double Throw
額定值 Rating	AC125V, 20A DC30V, 6A



型號 Model	A	B	C	D	E	F	G	BB	Z	J	K	M	N	O	P	min. Q	R	S	max. T	U	V	W	X	Y
TS-4	94	27.5	95	22.5	50	32	28	52	115	28	16	230	16	135	24°	55	55	60.5	55	15.5	19.5	143.5	5	2.5
TS-6	129	34.5	110	25	60	36	30	60	129	32	20	280	18	150	21°	70	68	75	70	11	19	178	5	2.5
TS-10	168	35.5	150	25	100	44	35	68	168	38	20	348	22	190	36°	85	93	102.5	85	21	29	226	6	3

限用於模具重量1000kg以下 for Dies under 1000kg

DR型舉模器可藉由填隙片的增減，很容易的適用不同尺寸的"T"型槽或"U"型溝。其基本長度有200mm與300mm兩種尺寸，經過搭配使用，可產生每100mm的總度變化。

These spring-loaded die lifters easily fit to different sizes T or U-slots on the bolster by adding spacers to the side walls of the die lifters.

Die lifters are available in standard lengths of 200mm and 300mm, any die lifters length can be constructed by combining these standard lengths in increments of 100mm.



大陸專利號: ZL 2010 2 0529002.7
China Patent No: ZL 2010 2 0529002.7

型式表示法 / Model

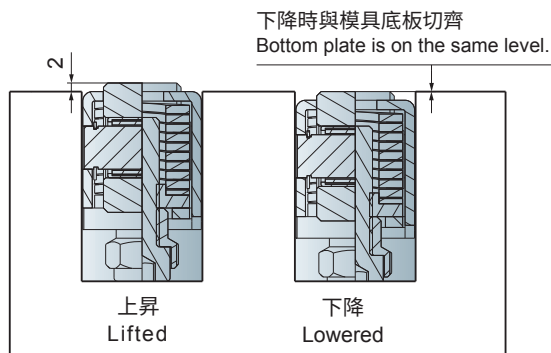
DR L - 28 - 300

長度 Length $\left\{ \begin{array}{l} 200\text{mm} \\ 300\text{mm} \end{array} \right.$

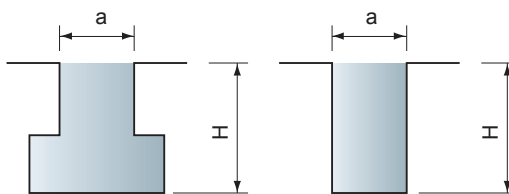
寬度 Width $\left\{ \begin{array}{l} 22\text{mm} \\ 28\text{mm} \end{array} \right.$

型式 Model $\left\{ \begin{array}{l} \text{L 滾輪 Roller} \\ \text{B 滾珠 Ball} \end{array} \right.$

DR型結構與動作 Construction and Action



"T/U"槽尺寸 T-slot / U-slot Dimensions



型號 Model	a	H
DR22	22	33~43
DR28	28	45~58

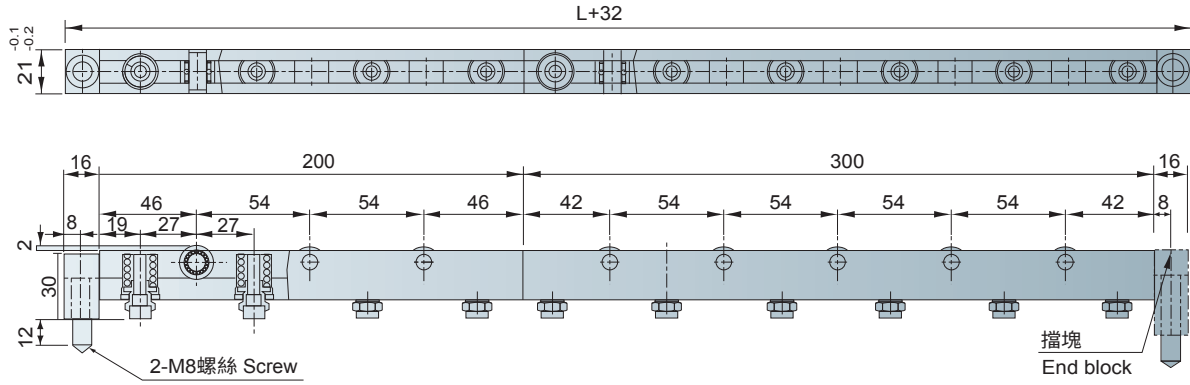
特性規格 Specifications

型號 Model	寬度 Width (mm)	長度 Length (mm)	彈簧數量 Springs (pcs)	單一彈簧舉模力 Lift Force (kg)
DRL-22-200/ DRB-22-200	22	200	4	37.5
DRL-22-300/ DRB-22-300	22	300	6	37.5
DRL-28-200/ DRB-28-200	28	200	4	75
DRL-28-300/ DRB-28-300	28	300	6	75

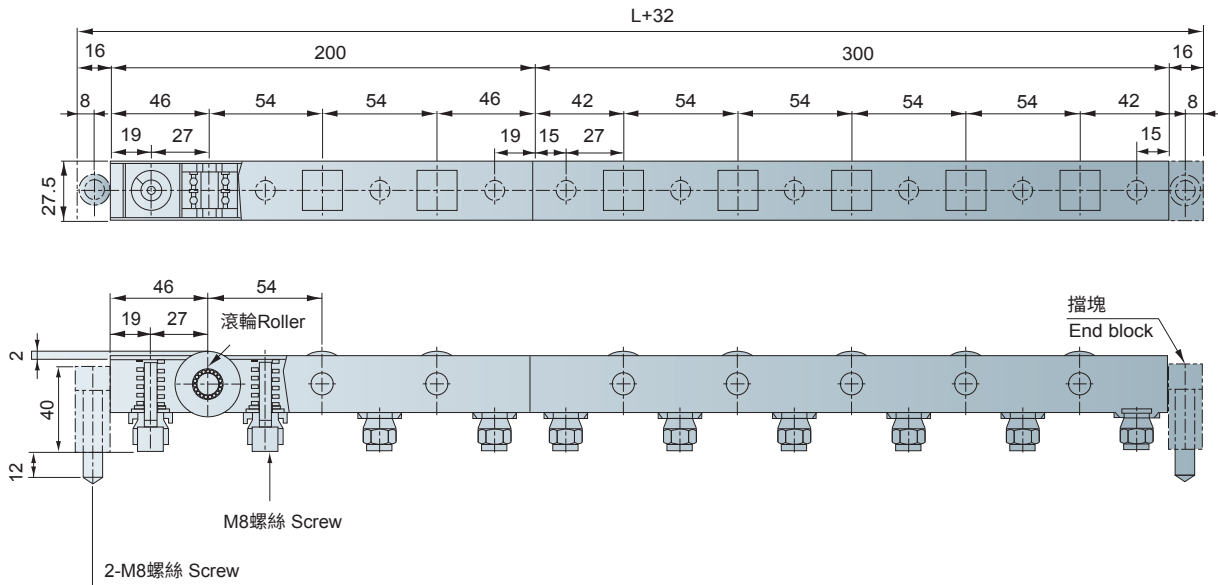
- DRL-22/DRB-22 耐熱溫度80°C Heat resistance up to 80°C
- DRL-28/DRB-28 耐熱溫度150°C Heat resistance up to 150°C

DR/DU 彈簧式舉模器 Die Lifter

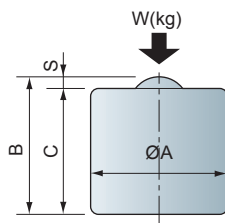
DR-22外型尺寸 Dimensions



DR-28外型尺寸 Dimensions



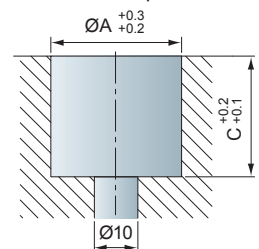
DU滾珠彈簧式舉模器



特性規格 Specifications

	DU100	DU200
A	$38_{-0.05}^0$	$45_{-0.05}^0$
B	38	45
C	$35_{-0.05}^0$	$42_{-0.05}^0$
S	3	3
W	100 kg	200 kg

台盤加工尺寸 Dimension for modifying the bolster plate



DL-22 油壓式舉模器 (滾輪型) Die Lifter (Roller Type)

DL型油壓式舉模器，以油壓方式舉模，有強力舉模能力，適合模具重量變化差異大時使用。

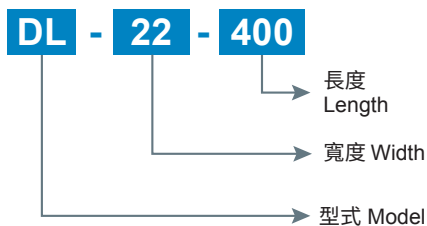
The hydraulic DL die lifter withstands heavy loads and abuse. The scrap guard / scrapers keep the roller surfaces free from scraps. The rollers are arrayed in closer pitches to prevent damage to the bottom of heavy dies. The height of the roller can be adjusted by removing some of the built-in shims of different thicknesses.



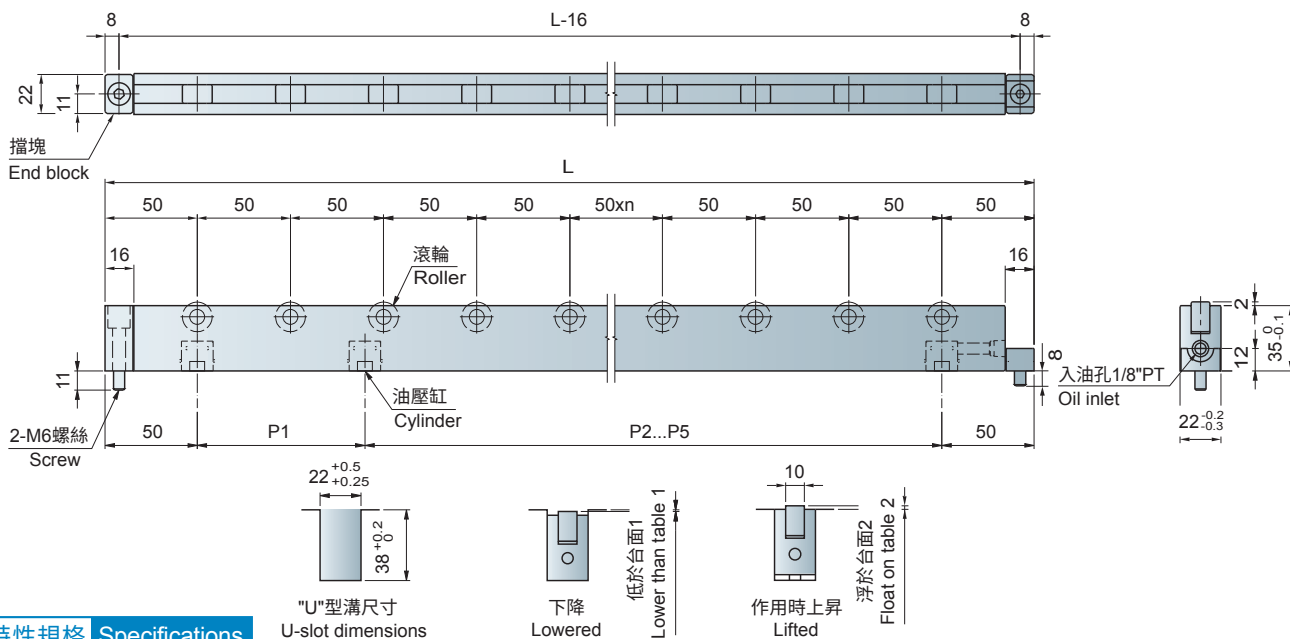
大陸專利號: ZL2010 2 0528997.5
China Patent No: ZL2010 2 0528997.5

基本型式 Basic Model	Unit	DL22	DL28	DL50
單一缸體舉模力 Lifting Force Per Cylinder	tons	0.25	0.5	1.1
工作油壓 Working Hydraulic Pressure	kg/cm ²	250	250	250
總上昇行程 Total stroke	mm	3	3	3
單一缸體容量 One Cylinder Capacity	cc.	0.3	0.6	1.4

型式表示法 / Model



外型尺寸 Dimensions



特性規格 Specifications

型號 Model	總長度(mm) Overall Length	滾輪數 Roller Q'ty	載模能力(kg) Die Load Capacity	油壓缸(kg) Lift Cylinder		油壓缸距離 (mm) Lift Cylinder Pitch					
				丁數 (pcs)	舉模力(kg) Lift Force	P1	P2	P3	P4	P5	
DL-22-300	300	5	300	2	500	200					
DL-22-400	400	7	420	3	750	90	210				
DL-22-500	500	9	540	4	1000	90	220	90			
DL-22-600	600	11	660	5	1250	90	160	160	90		
DL-22-700	700	13	780	5	1250	90	210	210	90		
DL-22-800	800	15	900	6	1500	90	150	220	150	90	

● 訂購時，如有下料孔請附台盤圖。

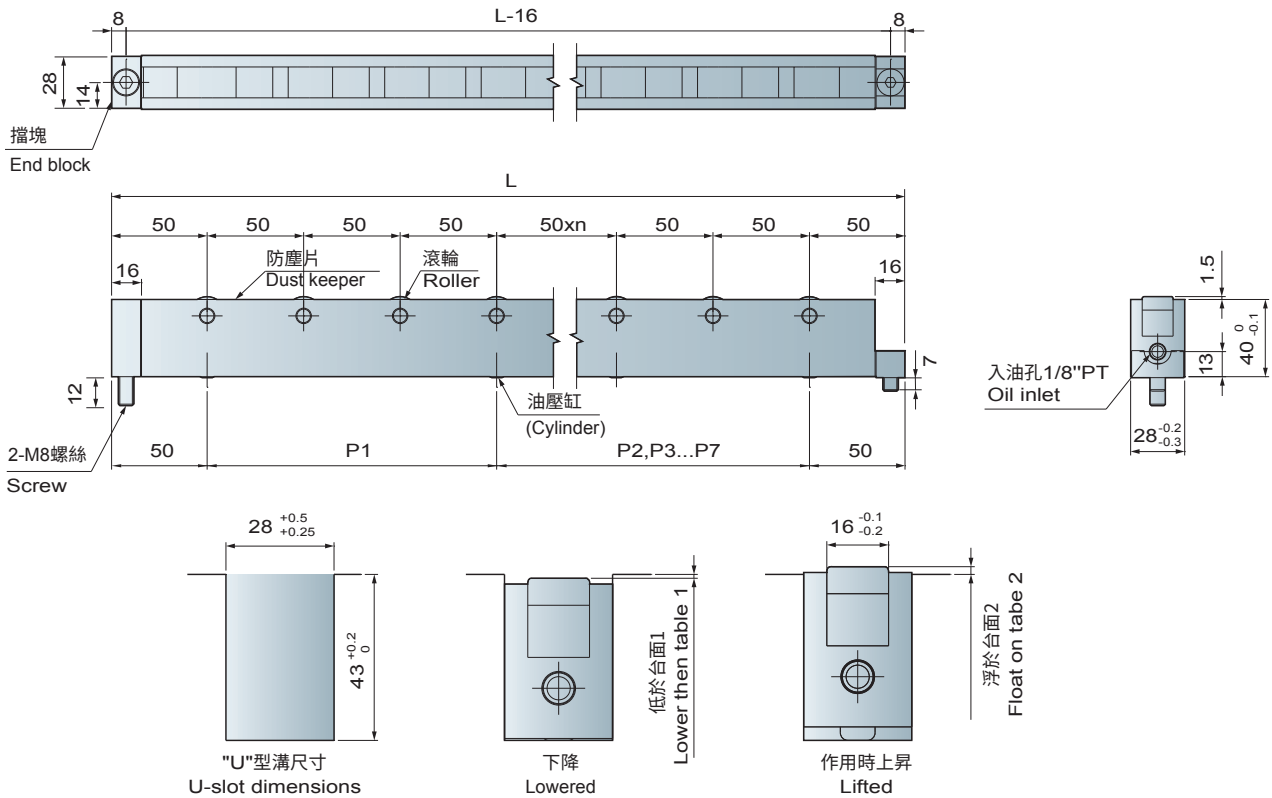
Before purchasing, please attach a bolster plate diagram for correct sizing of the waste material hole at the bottom.

DL-28 油壓式舉模器 (滾輪型) Die Lifter (Roller Type)

DL型油壓式舉模器，以油壓方式舉模，有強力舉模能力，適合模具重量變化差異大時使用。

The hydraulic DL die lifter withstands heavy loads and abuse. The scrap guard / scrapers keep the roller surfaces free from scrap. The rollers are arrayed in closer pitches to prevent damage to the bottom of heavy dies. The height of the roller can be adjusted by removing some of the built-in shims of different thicknesses.

外型尺寸 Dimensions



特性規格 Specifications

型號 Model	總長度(mm) Overall Length	滾輪數 Roller Q'ty	載模能力(kg) Die Load Capacity	油壓缸(kg) Lift Cylinder		油壓缸距離 (mm) Lift Cylinder Pitch								
				丁數 (pcs)	舉模力(kg) Lift Force	P1	P2	P3	P4	P5	P6	P7		
DL-28-400	400	7	560	2	1000	300								
DL-28-500	500	9	720	3	1500	90	310							
DL-28-600	600	11	880	4	2000	60	340	100						
DL-28-700	700	13	1040	4	2000	100	350	150						
DL-28-800	800	15	1200	5	2500	95	95	390	120					
DL-28-900	900	17	1360	5	2500	110	110	410	170					
DL-28-1000	1000	19	1520	6	3000	110	110	420	130	130				
DL-28-1100	1100	21	1680	6	3000	120	120	460	150	150				
DL-28-1200	1200	23	1840	7	3500	100	150	150	200	200	300			
DL-28-1300	1300	25	2000	7	3500	150	150	300	300	150	150			
DL-28-1400	1400	27	2160	8	4000	100	100	150	150	200	250	350		
DL-28-1500	1500	29	2320	8	4000	100	100	150	150	200	350	350		

● 1000L以上建議使用DL-50

For length over 1000 mm, we would consider DL-50 series instead.

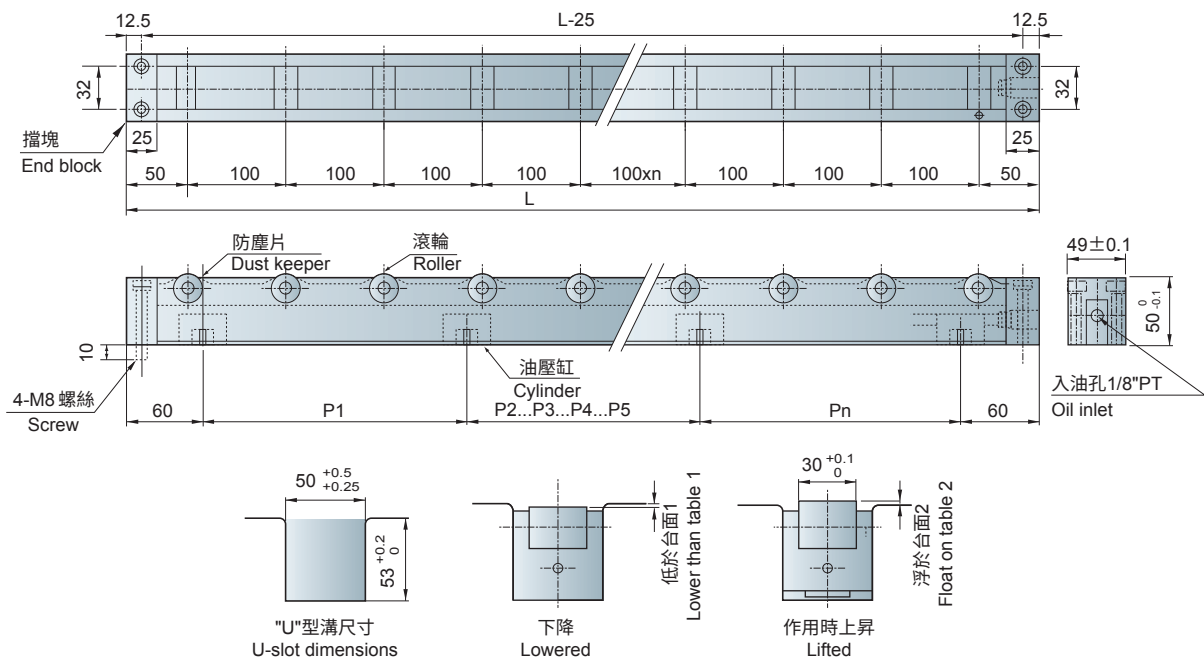
DL-50 油壓式舉模器 (滾輪型) Die Lifter (Roller Type)

DL型油壓式舉模器，以油壓方式舉模，有強力舉模能力，適合模具重量變化差異大時使用。

The hydraulic DL die lifter withstands heavy loads and abuse. The scrap guard / scrapers keep the roller surfaces free from scraps. The rollers are arrayed in closer pitches to prevent damage to the bottom of heavy dies.

The height of the roller can be adjusted by removing some of the built-in shims of different thicknesses.

外型尺寸 Dimensions



特性規格 Specifications

型號 Model	總長度(mm) Overall Length	滾輪數 Roller Q'ty	載模能力(kg) Die Load Capacity	油壓缸(kg) Lift Cylinder		油壓缸距離(mm) Lift Cylinder Pitch							
				丁數 (pcs)	舉模力(kg) Lift Force	P1	P2	P3	P4	P5	P6	P7	
DL-50-400	400	4	800	2	2200	280							
DL-50-500	500	5	1000	3	3300	90	290						
DL-50-600	600	6	1200	4	4400	60	330	90					
DL-50-700	700	7	1400	4	4400	100	340	140					
DL-50-800	800	8	1600	4	4400	120	390	170					
DL-50-900	900	9	1800	4	4400	170	400	210					
DL-50-1000	1000	10	2000	5	5500	125	125	410	220				
DL-50-1100	1100	11	2200	5	5500	150	150	400	280				
DL-50-1200	1200	23	4600	5	5500	150	150	400	380				
DL-50-1300	1300	25	5000	6	6600	150	150	200	400	280			
DL-50-1400	1400	27	5400	6	6600	150	150	200	400	380			
DL-50-1500	1500	29	5800	7	7700	150	150	200	300	300	280		
DL-50-1600	1600	31	6200	7	7700	100	150	250	400	300	280		
DL-50-1700	1700	33	6600	8	8800	100	100	150	250	300	300	380	
DL-50-1800	1800	35	7000	8	8800	100	100	150	250	300	300	480	

●訂購時，如有下料孔請附台盤圖。

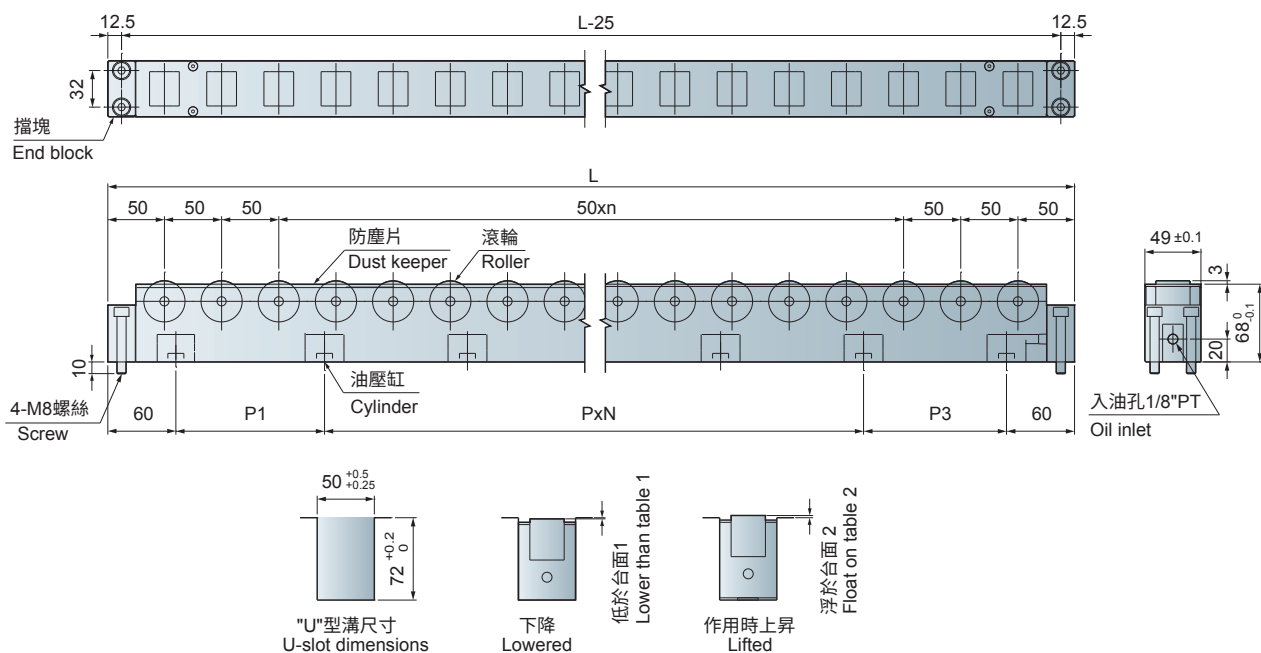
Before purchasing, please attach a bolster plate diagram for correct sizing of the waste material hole at the bottom.

DLM-50 油壓式舉模器(滾輪型) Die Lifter (Roller Type)

DLM型油壓式舉模器，與DL-50最大不同為"U"型溝深度為72mm，以油壓方式舉模，使用重荷重軸承，適合重量極大的模具使用。

The hydraulic DLM die lifter withstands heavy loads. U-slot's width is 50 mm and depth is 72 mm.

外型尺寸 Dimensions



特性規格 Specifications

型號 Model	總長度(mm) Overall Length	滾輪數 Roller Q'ty	載模能力(kg) Die Load Capacity	油壓缸(kg) Lift Cylinder		油壓缸距離(mm) Lift Cylinder Pitch		
				丁數 (pcs)	舉模力(kg) Lift Force	P1	PxN	P3
DLM-50-600	600	11	3960	4	4400	160	160x1	160
DLM-50-700	700	13	4680	5	5500	145	145x2	145
DLM-50-800	800	15	5400	6	6600	135	135x3	140
DLM-50-900	900	17	6120	6	6600	155	155x3	160
DLM-50-1000	1000	19	6840	7	7700	145	145x4	155
DLM-50-1100	1100	21	7560	8	8800	140	140x5	140
DLM-50-1200	1200	23	8280	9	9900	135	135x6	135
DLM-50-1300	1300	25	9000	10	11000	130	130x7	140
DLM-50-1400	1400	27	9720	11	12100	130	130x8	110
DLM-50-1500	1500	29	10440	12	13200	125	125x9	130
DLM-50-1600	1600	31	11160	12	13200	135	135x9	130
DLM-50-1700	1700	33	11880	13	14300	130	130x10	150
DLM-50-1800	1800	35	12600	14	15400	130	130x11	120
DLM-50-1900	1900	37	13320	15	16500	125	125x12	155
DLM-50-2000	2000	39	14040	16	17600	125	125x13	130

●訂購時，如有下料孔請附台盤圖。

Before purchasing, please attach a bolster plate diagram for correct sizing of the waste material hole at the bottom.

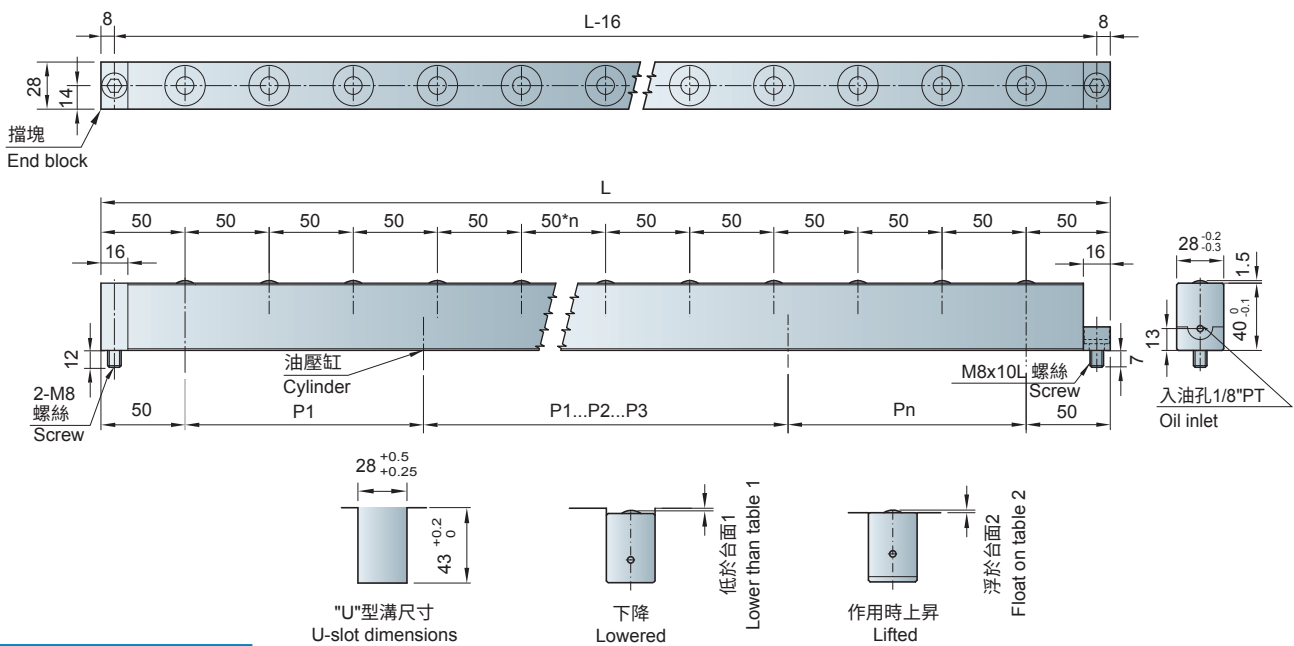
DB-28 油壓式舉模器 (滾珠型) Die Lifter (Ball Type)

限用於模具重量1150kg以下 for Dies under 1150kg

DB型油壓式舉模器，利用萬向滾珠的方式，適合前後左右移動模具時使用。

The hydraulic DB die lifter employs universal bearings for superior forward and reverse, left and right motion of molds in and out of press machines.

外型尺寸 Dimensions



特性規格 Specifications

型號 Model	總長度 (mm) Overall Length	滾珠數 Ball Q'ty	2支舉模器載模能力 (kg) Die Loading Capacity (kg) (2 pcs)		油壓缸 (kg) Lift Cylinder	油壓缸距離 (mm) Lift Cylinder Pitch								
			模板硬度 Plate's HRC			丁數 (pcs)	P1	P2	P3	P4	P5	P6	P7	
			HRC 25°以下 HRC under 25°	超過HRC 25° HRC above 25°										
DB-28-400	400	7	670	1050	2	300								
DB-28-500	500	9	700	1080	3	90	310							
DB-28-600	600	11	730	1110	4	60	340	100						
DB-28-700	700	13	760	1140	4	100	350	150						
DB-28-800	800	15	790	1170	5	95	95	390	120					
DB-28-900	900	17	820	1200	5	110	110	410	170					
DB-28-1000	1000	19	850	1230	6	110	110	420	130	130				
DB-28-1100	1100	21	850	1260	6	120	120	460	150	150				
DB-28-1200	1200	23	850	1290	7	100	150	150	200	200	300			
DB-28-1300	1300	25	850	1320	7	150	150	300	300	150	150			
DB-28-1400	1400	27	850	1320	8	100	100	150	150	200	250	350		
DB-28-1500	1500	29	850	1320	8	100	100	150	150	200	350	350		
最大載重			1150	1750										

- 訂購時，如有下料孔請附台盤圖
Before purchasing, please attach a bolster plate diagram for correct sizing of the waste material hole at the bottom.
- 最大載重說明請參考第30頁
For more details, refer to 30.

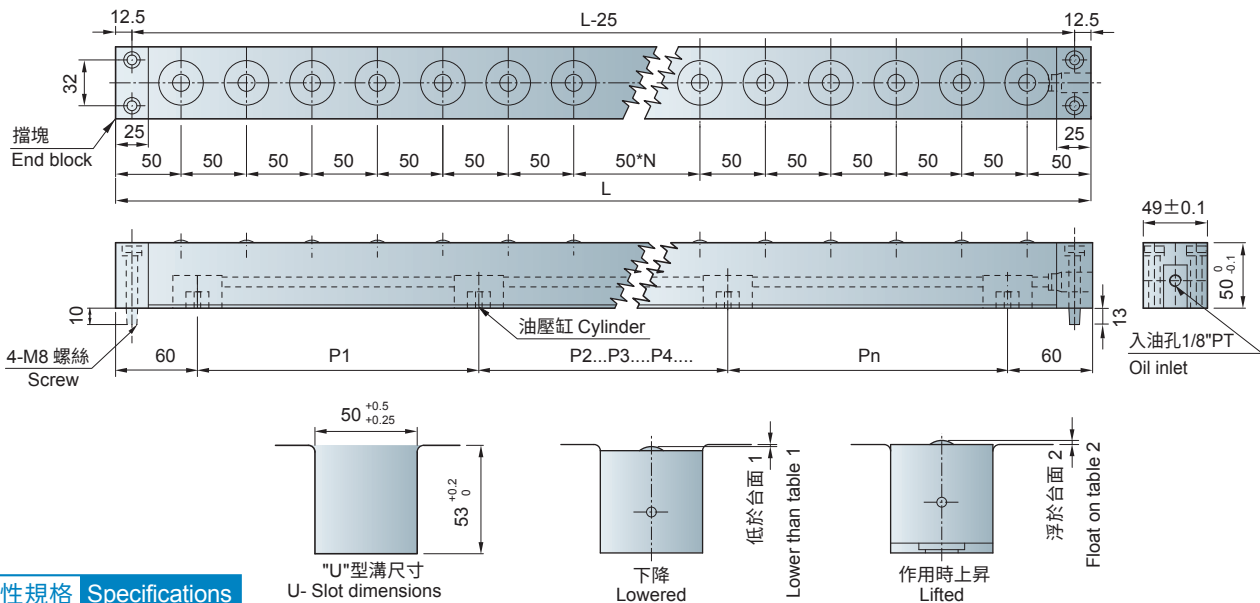
DB-50 油壓式舉模器 (滾珠型) Die Lifter (Ball Type)

限用於模具重量2200kg以下 for Dies under 2200kg

DB型油壓式舉模器，利用萬向滾珠的方式，適合前後左右移動模具時使用。

The hydraulic DB die lifter employs universal bearings for superior forward and reverse, left and right motion of molds in and out of press machines.

外型尺寸 Dimensions



特性規格 Specifications

型號 Model	總長度 (mm) Overall Length	滾珠數 Ball Q'ty	2支舉模器載模能力 (kg) Die Loading Capacity (kg) (2 pcs)		油壓缸 (kg) Lift Cylinder	油壓缸距離 (mm) Lift Cylinder Pitch										
			模板硬度 Plate's HRC			丁數 (pcs)	P1	P2	P3	P4	P5	P6	P7			
			HRC 25°以下 Plate's HRC under 25°	超過HRC 25° HRC above 25°												
DB-50-400	400	7	900	1224	2	280										
DB-50-500	500	9	1000	1340	3	90	290									
DB-50-600	600	11	1100	1456	4	60	330	90								
DB-50-700	700	13	1200	1572	4	100	340	140								
DB-50-800	800	15	1300	1688	4	120	390	170								
DB-50-900	900	17	1400	1804	4	170	400	210								
DB-50-1000	1000	19	1500	1920	5	125	125	410	220							
DB-50-1100	1100	21	1600	2036	5	150	150	400	280							
DB-50-1200	1200	23	1700	2152	5	150	150	400	380							
DB-50-1300	1300	25	1700	2268	6	150	150	200	400	280						
DB-50-1400	1400	27	1700	2384	6	150	150	200	400	380						
DB-50-1500	1500	29	1700	2500	7	150	150	200	300	300	280					
DB-50-1600	1600	31	1700	2500	7	100	150	250	400	300	280					
DB-50-1700	1700	33	1700	2500	8	100	100	150	250	300	300	380				
DB-50-1800	1800	35	1700	2500	8	100	100	150	250	300	300	480				
最大載重			2200	3000												

- 訂購時，如有下料孔請附台盤圖
Before purchasing, please attach a bolster plate diagram for correct sizing of the waste material hole at the bottom.
- 最大載重說明請參考第30頁
For more details, refer to 30.

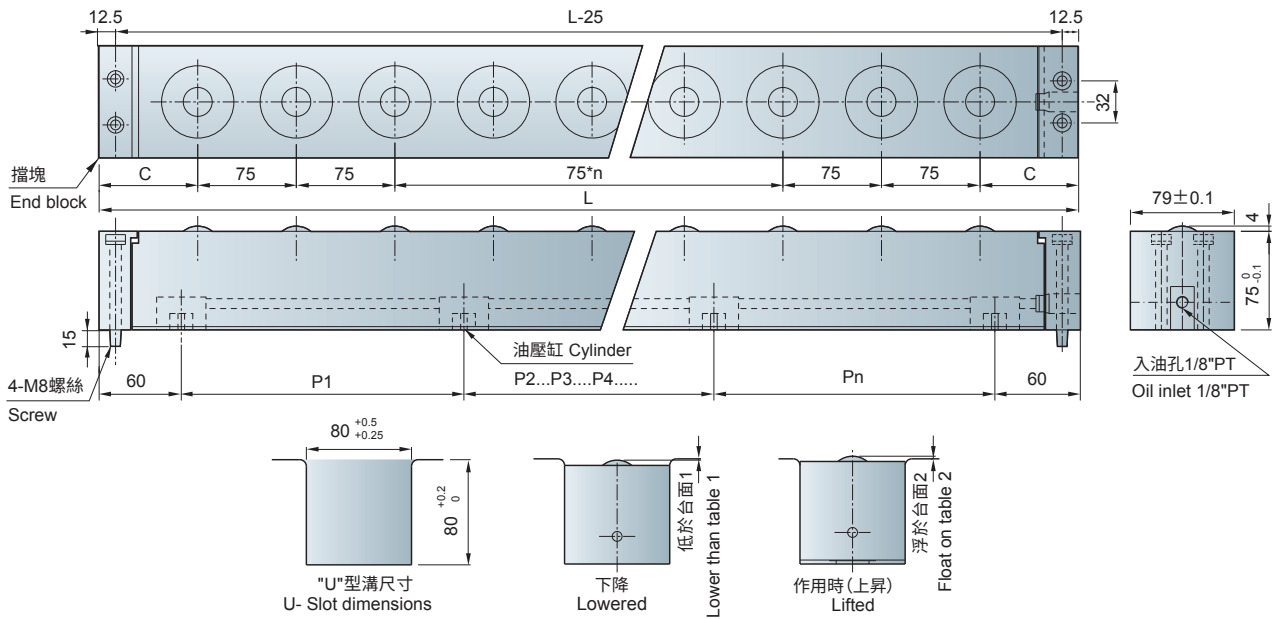
DB-80 油壓式舉模器 (滾珠型) Die Lifter (Ball Type)

限用於模具重量6000kg以下 for Dies under 6000kg

DB型油壓式舉模器，利用萬向滾珠的方式，適合前後左右移動模具時使用。

The hydraulic DB die lifter employs universal bearings for superior forward and reverse, left and right motion of molds in and out of press machines.

外型尺寸 Dimensions



特性規格 Specifications

型號 Model	總長度 (mm) Overall Length	滾珠數 Ball Q'ty	2支舉模器載模能力 (kg) Die Loading Capacity (kg) (2 pcs)		油壓缸 (kg) Lift Cylinder	油壓缸距離 (mm) Lift Cylinder Pitch											邊距 Margin		
			模板硬度 Plate's HRC			丁數 (pcs)	P1	P2	P3	P4	P5	P6	P7	P8	P9	P10		P11	C
			HRC 25°以下 Plate's HRC under 25°	超過HRC 25° HRC above 25°															
DB-80-400	400	4	1500	2400	3	140	140											87.5	
DB-80-500	500	6	1750	2700	3	190	190											62.5	
DB-80-600	600	7	2000	3000	4	125	230	125										75	
DB-80-700	700	9	2250	3300	4	125	330	125										87.5	
DB-80-800	800	10	2500	3600	6	125	125	180	125	125								62.5	
DB-80-900	900	11	2750	3900	6	125	125	280	125	125								75	
DB-80-1000	1000	13	3000	4200	6	125	125	380	125	125	125							87.5	
DB-80-1100	1100	14	3250	4500	8	125	125	125	230	125	125	125						62.5	
DB-80-1200	1200	15	3500	4800	8	125	125	125	330	125	125	125						75	
DB-80-1300	1300	16	3750	5100	8	125	125	125	430	125	125	125						87.5	
DB-80-1400	1400	18	4000	5400	10	125	125	125	125	280	125	125	125	125				62.5	
DB-80-1500	1500	19	4250	5700	10	125	125	125	125	380	125	125	125	125				75	
DB-80-1600	1600	20	4500	6000	10	125	125	125	125	480	125	125	125	125				87.5	
DB-80-1700	1700	22	4500	6000	12	125	125	125	125	125	330	125	125	125	125	125	125	62.5	
最大載重			6000	7500															

●訂購時，如有下料孔請附台盤圖
Before purchasing, please attach a bolster plate diagram for correct sizing of the waste material hole at the bottom.

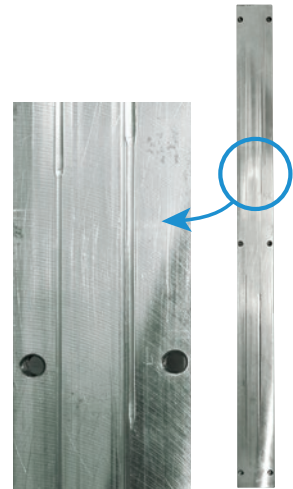
●最大載重說明請參考第30頁
For more details, refer to 30.

滾珠型舉模器最大載重說明

Why DB Die Lifters Have Limited Loading

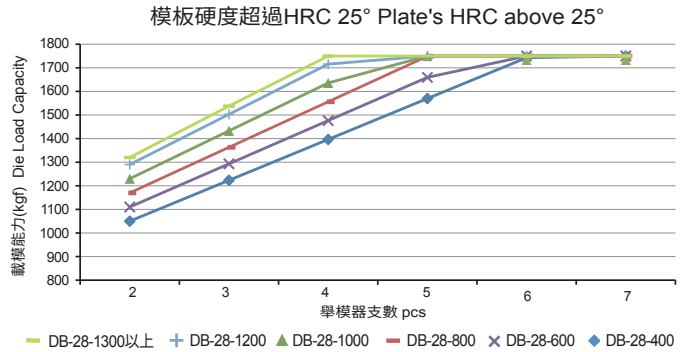
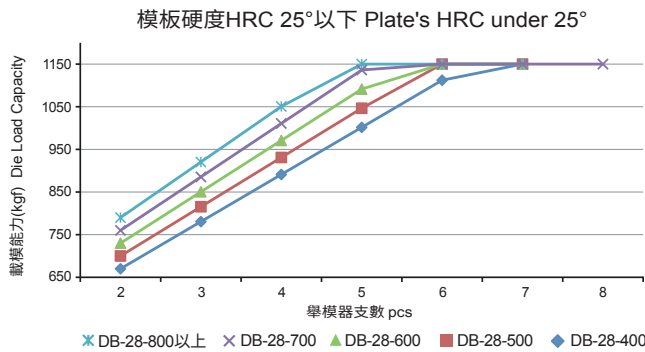
模具與鋼珠接觸面積小，且鋼珠硬度大於模具底板，模具移動時接觸面會造成永久變形(如右圖)，模具底板受損後，模具側向移動會不易推動，故有最大載重限制。

Ball's HRC is harder than plate, after long-term use, the contact surface will be deformed (see picture).

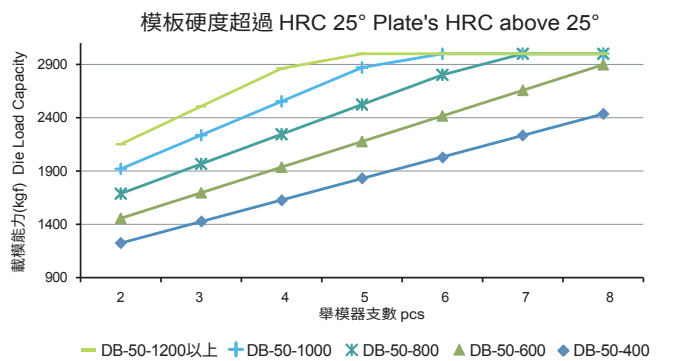
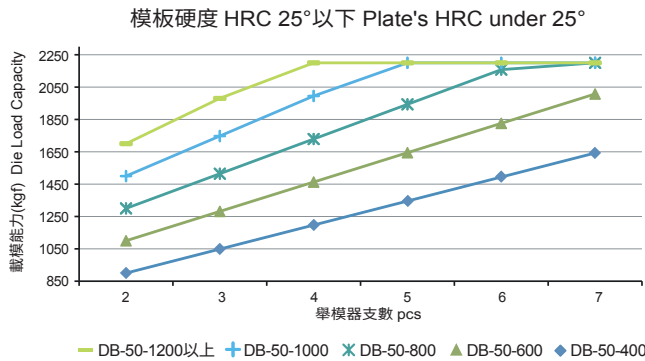


模板硬度與滾珠型舉模器支數關係圖
Plate's HRC relates DB die lifter loading and quantity

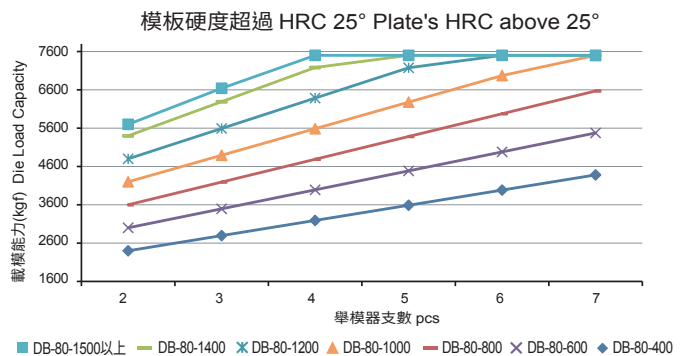
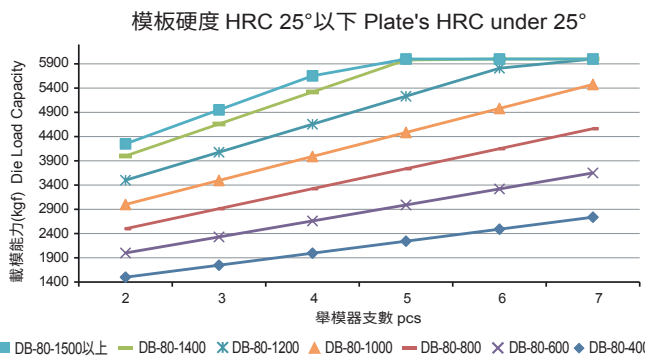
模板硬度與DB-28支數荷重 Plate's HRC relates DB-28's loading & quantity



模板硬度與DB-50支數荷重 Plate's HRC relates DB-50's loading & quantity



模板硬度與DB-80支數荷重 Plate's HRC relates DB-80's loading & quantity

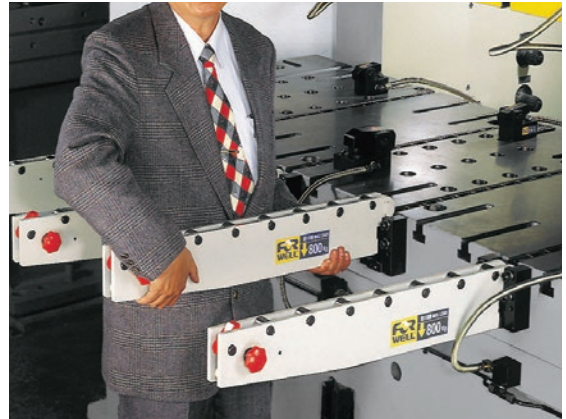


RC/RD/RE/RF 移模臂選用 Die Arm

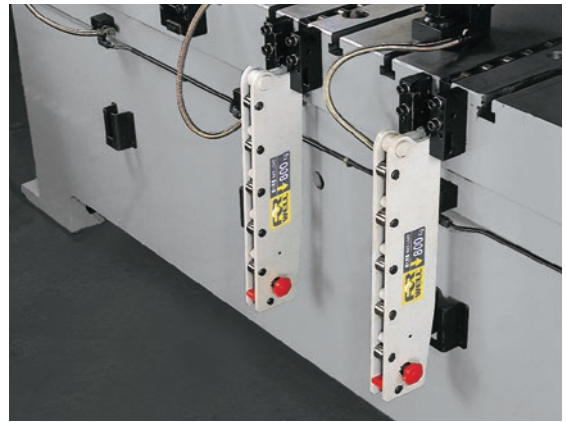
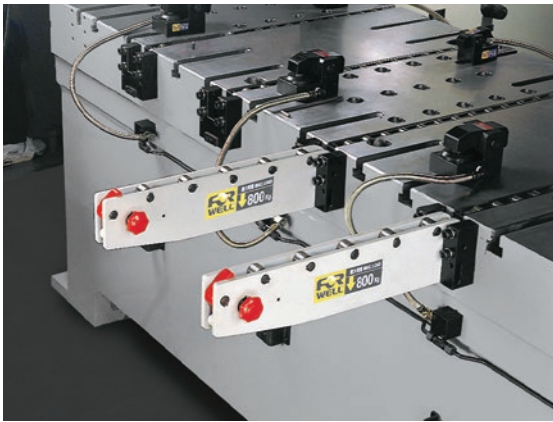
當您使用起重機或叉架昇降機作模具更換時，共有三種不同的型式設計，包括RC(移動式)、RD(折下式)與RE/RF(旋轉式)系列，可供選用移模臂使用，可以使模具更容易的移到沖床台盤確實位置。

Die Arm makes it easy to move dies to an accessible area with a crane or forklift truck for convenient die changes. Three different designs are available: detachable RC series, drop-down RD series, and folding RE/RF series.

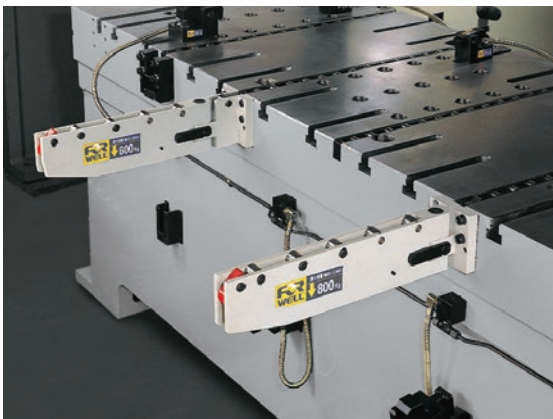
RC Series



RD Series



RE/RF Series



RC 移模臂 (移動式) Die Arm (Detachable Type)

型式表示法 / Model

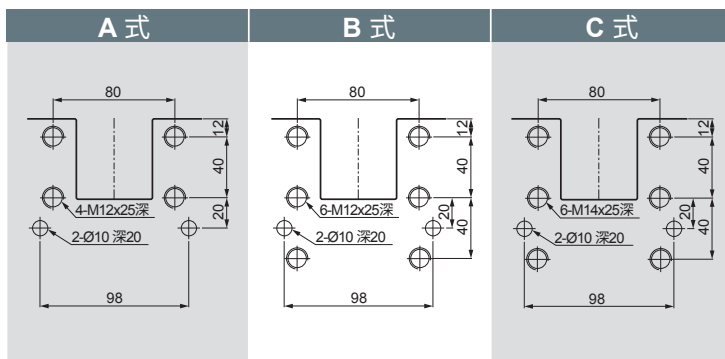
RC - 500 - 800

荷重
Max. Load

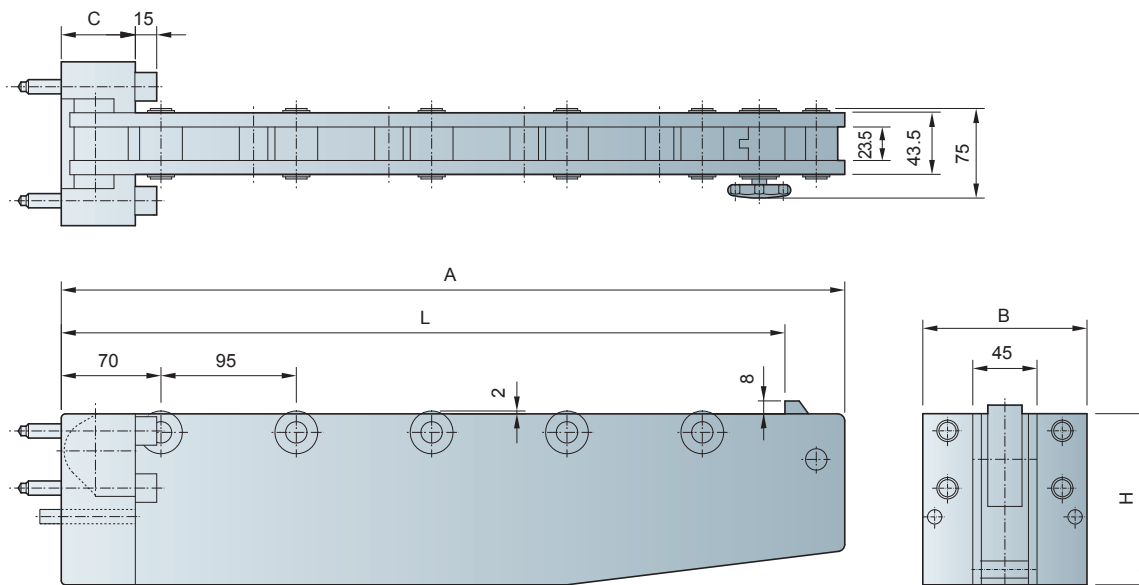
長度 Length

型式 Model

安裝鑽孔尺寸 Mounting Hole Dimensions



外型尺寸 Dimensions

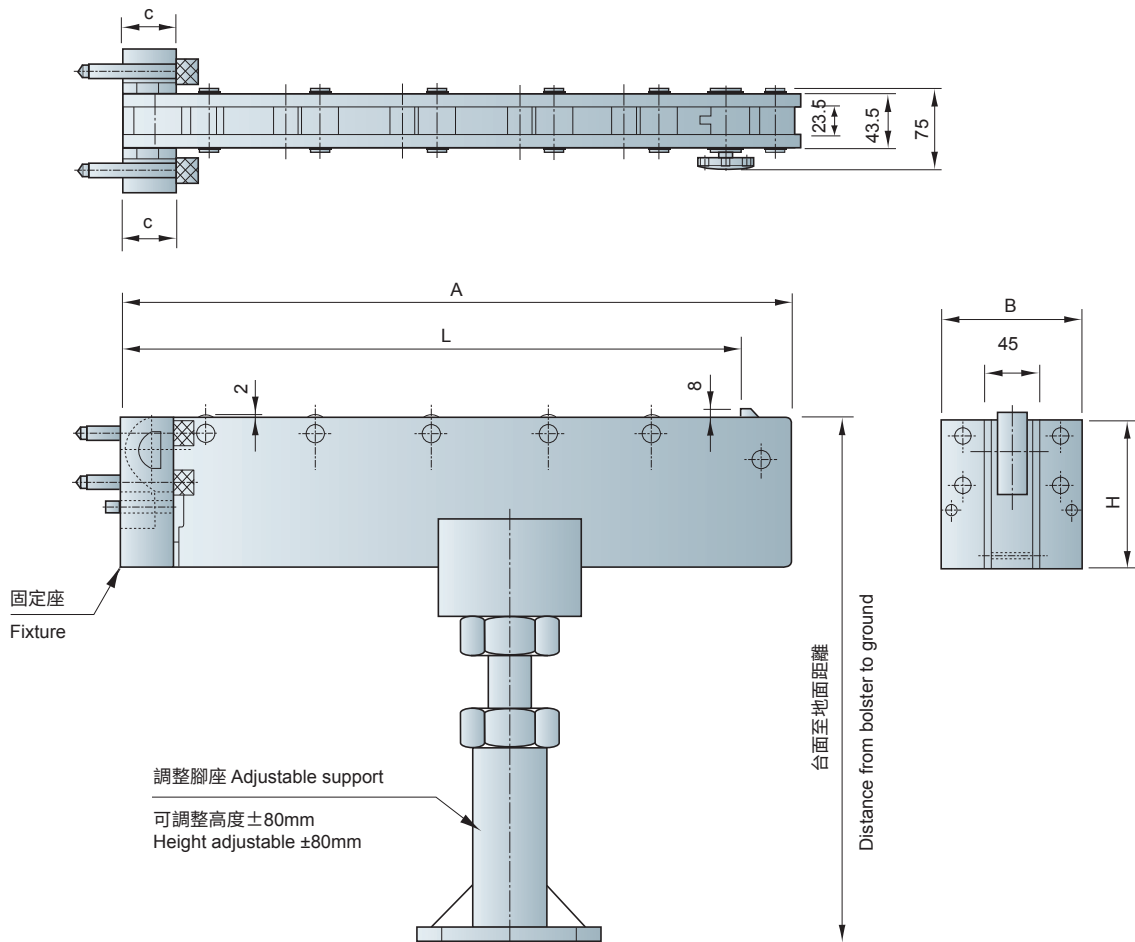


特性規格 Specifications

型號 Model	模具引出長 Die Travel (L)	最大荷重 Max. Load (kg)	全長 Overall Length (A)	滾輪數 Rollers	固定座 Fixture			安裝尺寸 Installed Dimensions	固定座型式 Fixture Model	
					B	C	H			
RC-500-800	500	800	550	5	115	46	120	A式	RC-120	
RC-500-1250	500	1250	550				160		RC-160	
RC-500-1600	500	1600	550	50		200	B式	RC-200		
RC-700-600	700	600	750	7		50	46	120	A式	RC-120
RC-700-1000	700	1000	750		160			RC-160		
RC-800-800	800	800	850	8	50		46	160	A式	RC-160
RC-800-1600	800	1600	850					200		B式
RC-800-2000	800	2000	850	9		200	C式	RC-200		
RC-900-1600	900	1600	950	9		200	B式	200	RC-200	
RC-1000-1600	1000	1600	1050	10	200	RC-200				

RC 移模臂 (重負荷) Die Arm (Heavy Duty)

外型尺寸 Dimensions



大陸專利號: ZL 2010 2 0529014. X
China Patent No: ZL 2010 2 0529014. X

特性規格 Specifications

型號 Model	模具引出長 Die Travel (L)	最大荷重(kg) Max. Load	全長 Overall Length (A)	滾輪數 Rollers	固定座 Fixture			安裝尺寸 Installed Dimensions	固定座型式 Fixture Model
					B	C	H		
RC-1200-2500	1200	2500	1250	14	115	46	120	A式	RC-120
RC-1300-2500	1300	2500	1350	15					
RC-1400-2500	1400	2500	1450	17					
RC-1500-2500	1500	2500	1550	18					
RC-1600-2500	1600	2500	1650	19					
RC-1700-2500	1700	2500	1750	20					

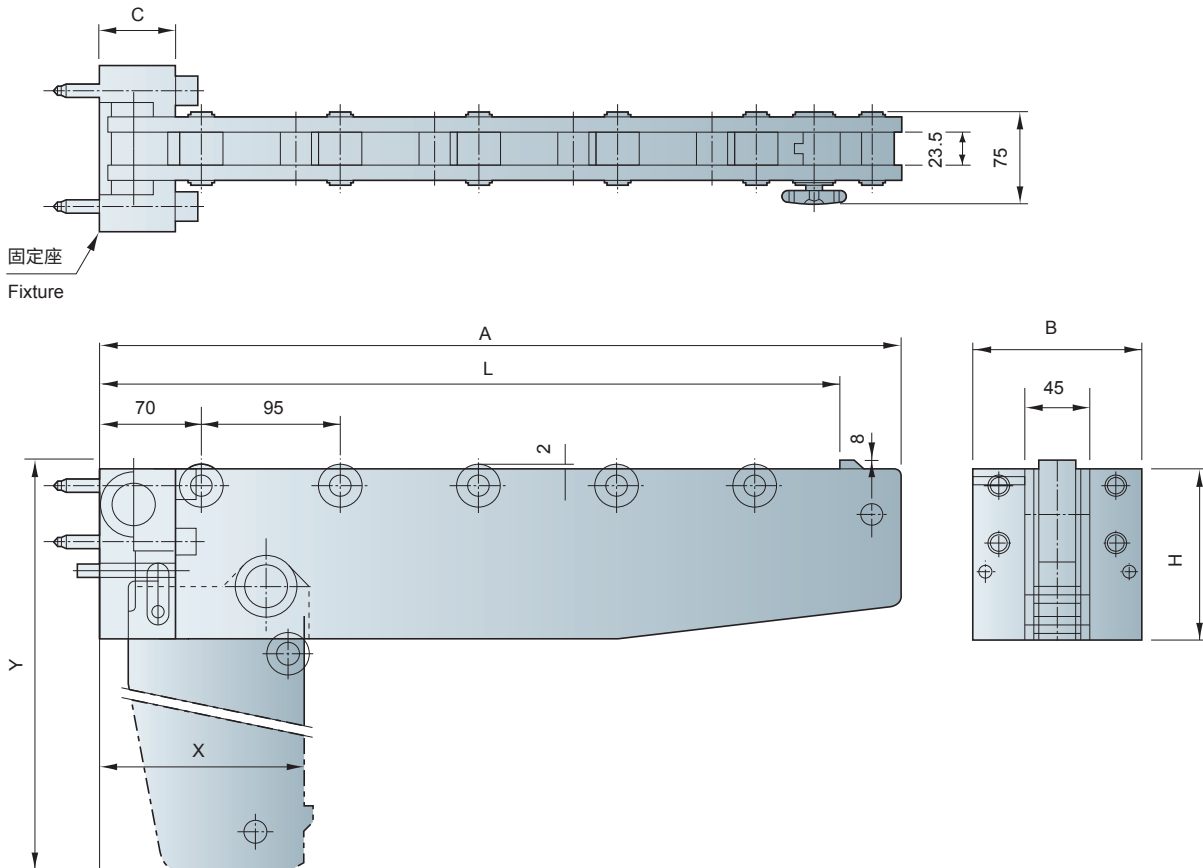
- (L)尺寸超出 1000mm 須加調整腳座。Requires adjustable support if die travels over 1000mm. 附腳座。These models come standard with an adjustable support.
- 規格外請確認。Contact us for other specifications.

RD 移模臂 (折下式) Die Arm (Drop-down Type)

台盤面距離工作地面需 > Y尺寸

The distance from ground to bolster should over the size of Y.

外型尺寸 Dimensions



大陸專利號: ZL 2010 2 0529014. X
China Patent No: ZL 2010 2 0529014. X

特性規格 Specifications

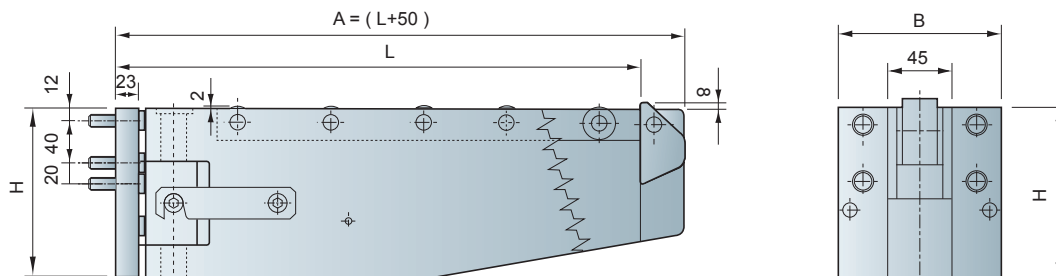
型式 Model	模具引出長 Die Travel (L)	最大荷重 Max. Load	全長 Overall Length (A)	滾輪數 Rollers	固定座 Fixture			安裝尺寸 Installed Dimensions	折下時尺寸 Drop-Down		
					B	C	H		X	Y	
RD-500-800	500	800	550	5	115	52	120	A式	140	620	
RD-500-1250	500	1250	550				160		180	660	
RD-500-1600	500	1600	550				200	B式	220	700	
RD-700-600	700	600	750				7	120	A式	140	820
RD-700-1000	700	1000	750				7	160		180	860
RD-800-800	800	800	850				8	160	B式	180	960
RD-800-1600	800	1600	850				8	200		220	1000
RD-800-2000	800	2000	850				9	200	C式	220	1000
RD-900-1600	900	1600	950				9	200	B式	220	1100
RD-1000-1600	1000	1600	1050				10				1200

RE/RF 移模臂 (旋轉式) Die Arm (Folding Type)

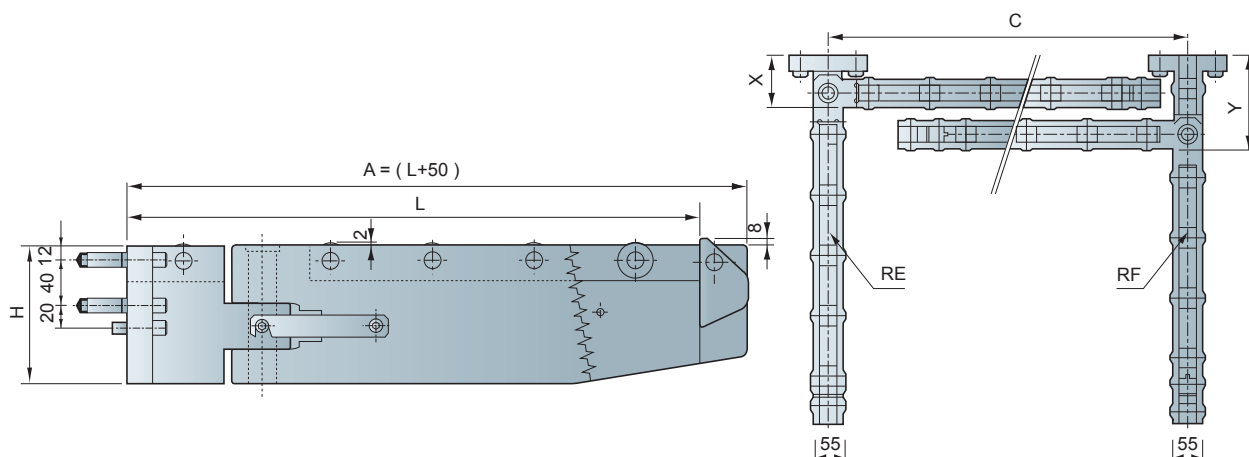
台盤的左右內距長需 > C尺寸

The left-right bolster size should over the size of C.

RE 外型尺寸 Dimensions



RF 外型尺寸 Dimensions



大陸專利號: ZL 2010 2 0529014. X
China Patent No: ZL 2010 2 0529014. X

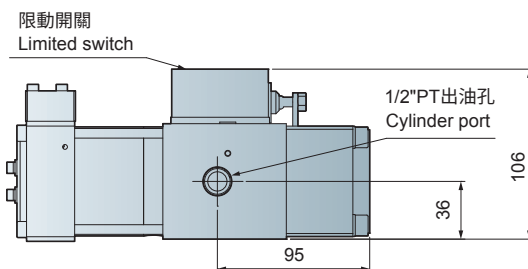
特性規格 Specifications

型式 Model	模具引出長 Die Travel (L)	最大荷重 Max. Load	全長 Overall Length (A)	滾輪數 Rollers	固定座 Fixture			安裝尺寸 Installed Dimensions	內折時尺寸 Folding			
					C	B	H		X	Y		
RE.RF-500-800	500	800	550	5	525	115	120	A式	90	150		
RE.RF-500-1250	500	1250	550	5			160					
RE.RF-500-1600	500	1600	550	5			200				B式	
RE.RF-700-600	700	600	750	7			725				120	A式
RE.RF-700-1600	700	1600	750	7			725				200	B式
RE.RF-800-800	800	800	850	8			825				160	A式
RE.RF-800-1600	800	1600	850	8			825				200	B式
RE.RF-900-1600	900	1600	950	9			925					

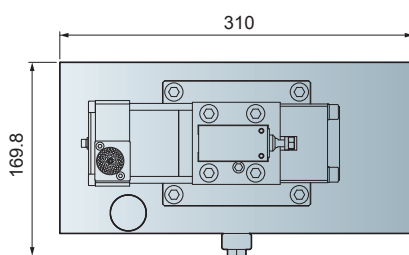
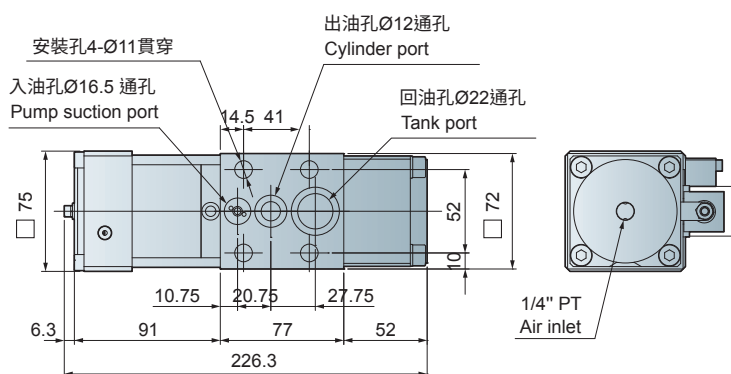
過負荷泵浦 Overload Pump

除了換模系統產品以外，富偉也提供了寬廣適用範圍的空油壓組件與設備，這些包括供塑膠射出模具用，和工件夾具系統使用的套件等等，下面圖示說明的產品，如果對您的生產機具有所效用，請與我們聯絡，做更技術性的了解。

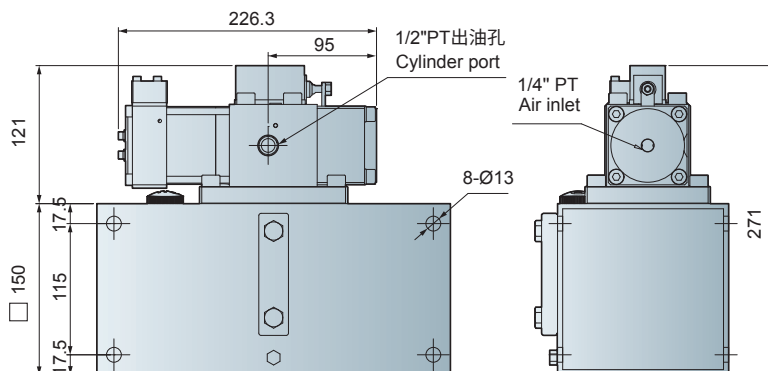
Besides die change systems, Forwell offers a wide range of hydraulic and pneumatic controlled components and equipment for plastic injection molds and workpiece clamping systems for machine tools. The components shown below represent just a selection of what we have available. For related brochures and further details, don't hesitate to contact us.



型式 Model	OL107
空氣壓力範圍 Air Supply	2.5 ~ 5.5 kg/cm ²
過負荷壓力比 Power Ratio	空氣壓力 x 70倍 Air Pressure x 70
過負荷壓力範圍 Power Pressure	175 ~ 385 kg/cm ²
洩載面積 Area of Air Outlet	0.4 cm ²
洩壓流量 Releasing Flow Rate	11000 cc./sec



型式 Model	OL107 (含油箱with a tank)
油箱全容量(l) Reservoir Capacity	5.1
可用容量(l) Available Lubricant	3.9



相關零件 Related Products for Press Machines

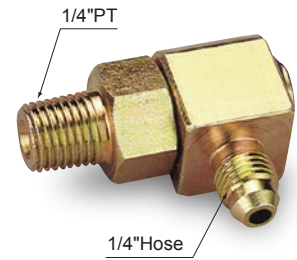
氣動泵單體 Air Pump



氣控閥組合 Air Control Valve



迴轉接頭 Rotary Unit



1/4"PT x 1/4"H
耐壓 Pressure resistance: 700kg/cm²

氣動泵 Power Unit

夾模器 Die Clamp

舉模器 Die Lifter

移模臂 Die Arm

配件 Accessories

兩點組合 Filter Regulator



壓力開關 Pressure Switch



壓力錶 Pressure Gauge



訂購資料表 Quotation Request Form

基本資料 Your Information

公司名稱 / Company Name :

連絡人 / Contact Person :

地址 / Address :

電話 / Tel :

傳真 / Fax :

(如果您訂購二台以上沖床換模系統，請複印此份表格使用，並明列每台沖床資料。)
(If you require quotations for more than one press, please copy this form one for each machine.)

A 沖床部份 Press Parts	A1 新購或舊有 New or existing	<input type="checkbox"/> 新購 New	<input type="checkbox"/> 舊有 Existing				
	A2 製造商及型號 Manufacturer and model	製造商 Manufacturer	型號 Model				
	A4 沖壓能力 Tonnage	<input type="checkbox"/> 美制 US	<input type="checkbox"/> 公制 Metric				
	A5 滑塊尺寸 Slide dimensions	(L-R) <input type="text"/>	X (F-B) <input type="text"/> mm/inch				
	A6 台盤尺寸 Bolster dimensions	(L-R) <input type="text"/>	X (F-B) <input type="text"/> mm/inch				
	A7 "T"型槽 (詳細測量) T-slots	<input type="checkbox"/> 有 Yes	<input type="checkbox"/> 沒有 No				
	B 模具部份 Die Parts	B1 最大重量 Max. weight	<input type="text"/>	kg/lbs			
B2 最大尺寸 Max. dimensions		(W) <input type="text"/>	x (L) <input type="text"/> x (H) <input type="text"/> mm/inch				
B3 螺栓用"U"型溝 U-slot for bolting		<input type="checkbox"/> 有 Yes	<input type="checkbox"/> 沒有 No				
B4 模具邊緣厚度 Die shoe thickness		<input type="text"/>	mm/inch				
B5 模具底部 Bottom		<input type="checkbox"/> 平面 Plain	<input type="checkbox"/> 格子狀 Lattice				
B6 特殊需求 Special requirements		<input type="text"/>					
C 換模組件部份 Die Change System Parts	C1 所需組件 Required components	夾模器 Clamp	型式 Model	<input type="text"/>	X	<input type="text"/>	個 pcs
		舉模器 Die lifter	型式 Model	<input type="text"/>	X	<input type="text"/>	個 pcs
		移模臂 Die arm	型式 Model	<input type="text"/>	X	<input type="text"/>	個 pcs
		氣動泵組合 Power unit	型式 Model	<input type="text"/>	X	<input type="text"/>	個 pcs



富偉精機股份有限公司

台灣513彰化縣埔心鄉經口村明聖路二段399號
TEL: +886-4-8345196 FAX: +886-4-8345197
Skype: forwell E-mail: forwell@forwell.com

富偉精密機械(寧波)有限公司

中國浙江省寧波市鎮海經濟開發區金誠路158號 郵編: 315200
TEL: +86-574-8659-9196 FAX: +86-574-8659-9197
Skype: forwellnb E-mail: forwell@forwellnb.com

富偉機械科技(淮安)有限公司

中國江蘇省淮安市淮安區劉伶台路2號 郵編: 223200
TEL: +86-517-8565-9196 FAX: +86-517-8565-9197
Skype: forwell.ha E-mail: forwell@forwellha.com

深圳分公司

廣東省深圳市寶安區沙井鎮新橋街道辦洋仔一路庭軒雅苑一樓富偉精機 郵編: 518104
TEL: +86-755-2751-3796 FAX: +86-755-2751-3797 Skype: forwellsz

FORWELL PRECISION MACHINERY CO., LTD.

No. 399, Sec. 2, Mingsheng Rd., Puxin Township,
Changhua County 513, Taiwan
TEL: +886-4-8345196 FAX: +886-4-8345197
Skype: forwell E-mail: forwell@forwell.com

FORWELL PRECISION MACHINERY (NINGBO) CO., LTD.

No. 158, Jin-cheng Rd., Zhenhai Economic Development Zone,
Ningbo, Zhejiang, China 315200
TEL: +86-574-8659-9196 FAX: +86-574-8659-9197
Skype: forwellnb E-mail: forwell@forwellnb.com

FORWELL MACHINERY TECH (HUAIAN) CO., LTD.

No. 2, Liulingtai Rd, Huaian District, Huai'an, Jiangsu, China 223200
TEL: +86-517-8565-9196 FAX: +86-517-8565-9197
Skype: forwell.ha E-mail: forwell@forwellha.com

SHENZHEN BRANCH:

1F, Tingsyuanyuan, Sinciaoyangzih 1st Rd, Shajing Township,
Baoan District, Shenzhen, China 518104
TEL: +86-755-2751-3796 FAX: +86-755-2751-3797 Skype: forwellsz



富偉科技集團 台灣



富偉科技集團 寧波

