



立興陳機械



# MACHI

## LSN 直壁型單曲軸精密沖床

STRAIGHT SIDE SINGLE CRANK PRECISION PRESSES  
SERIES LSN 80~260 TONS

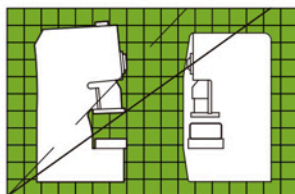
立 興 陳 機 械

# LI HSING CHEN

[www.lihsingchen.com](http://www.lihsingchen.com)



## 剛性特佳的沖床



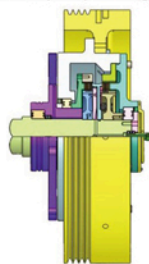
LSN系列沖床經長久衝壓作業之後，衝頭與平板間的開喉角度比C型沖床減少15%，因而能提高沖壓件之精度，延長模具之壽命。

LSN series punching machine: Through a lone punching operations, the punch and the flat angle between the open throat punch reduced by 15% than C type punching machine, which can improve the accuracy of punching and extend mold life.

## 高扭矩濕式離合器

耐磨耗性佳、低噪音、無汙染  
扭矩大·半永久性壽命。

Outstanding abrasion resistance,  
low noise, no pollution, great  
torque, semi-permanent life.



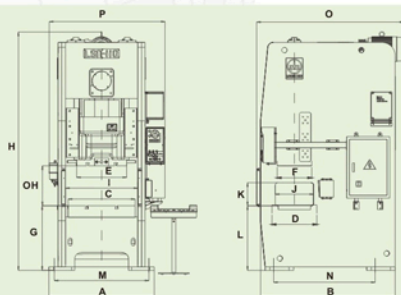
## 主要規格 Specification

型式 Model	LSN-80		LSN-110		LSN-160		LSN-200		LSN-260			
	S	H	S	H	S	H	S	H	S	H		
噸數 Capacity	Tons		80		110		160		200		260	
行程 Length of strokes	150	100	170	100	200	130	200	150	250	200	200	
行程數 定速 Fixed speed	S.P.M.		60	80	50	70	40	60	35	50	30	45
變速 Variable speed	S.P.M.		60-75	60-90	50-65	50-75	40-55	40-65	35-45	35-65	30-40	30-50
能力發生點 Rated tonnage point(B.D.C)	mm		5	3.2	5	3.2	6	4	6	4	7	4
最大模高 Die height	mm		330	355	350	385	400	435	450	475	450	475
滑塊調整量 Adjustment of slide	mm		80		90		100		125		125	
滑塊面積 Area of slide (EXF)mm	530X400		650X450		700X500		860X650		920X700			
台盤面積 Area of bolster (L.R. X F.B.) (CXD)mm	750X500		870X600		1000X750		1150X840		1250X860			
台盤厚度 Thickness of bolster	mm		130		150		160		180		180	
作業面高度 Work height (G)mm	820		840		900		1000		1020			
側向開口 Side open (JXK)mm	450X420		500X450		610X520		700X600		750X600			
佔地面積 Space area (PXO)mm	1350X1670		1510X1915		1710X2140		1870X2350		2020X2615			
腳座尺寸 Foot size (AXB)mm	1210X1575		1370X1750		1610X2085		1760X2220		1950X2540			
總高度 Over all height (H)mm	2740		3030		3450		3785		4040			
主馬達 定速 Fixed speed	HP x P		7.5X4		10X4		15X4		20X4		25X4	
變速 Variable speed	HP x P		V.S.10X4		V.S.15X4		V.S.20X4		V.S.25X4		V.S.30X4	
滑塊調整馬達 Motor for slide adjustment	HP x P		1/2X4		1/2X4		1X4		1X4		2X4	
使用空氣壓力 Air pressure required	kg/cm <sup>2</sup>		5		5		5		5		5	

## 模墊(特別附屬品) Die cushion(Optional)

項目 Project	型式 Model	能力 Capacity tons	行程 Strokes mm	模墊面積 Pad area (L.R. X F.B.)mm	使用空氣 Air pressure required kg/cm <sup>2</sup>
機種 Models					
LSN-80	AC-354	4.8	85	350X280	5
LSN-110	AC-404	6.3	90	350X280	5
LSN-160	AC-454	8	100	410X300	5
LSN-200	AC-605	14	110	560X380	5
LSN-260	AC-605	14	110	750X480	5

## ▶ 外型尺寸圖



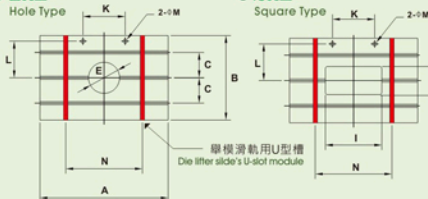
外型尺寸 Size of outline

	A	B	C	D	E	F	G	H	I	J	K	L	M	N	O	P	OH
LSN-80	1210	1575	750	500	530	400	820	2740	830	450	420	810	1070	1055	1670	1350	480
LSN-110	1370	1750	870	600	650	450	840	3030	950	500	450	840	1230	1170	1915	1510	520
LSN-160	1610	2085	1000	750	700	500	900	3450	1100	610	520	900	1380	1420	2140	1710	600
LSN-200	1760	2220	1150	840	860	650	1000	3785	1250	700	600	980	1560	1610	2350	1870	650
LSN-260	1950	2540	1250	860	920	700	1020	4040	1350	750	600	1030	1690	1770	2615	2020	700

## ▶ 台盤及滑塊尺寸圖

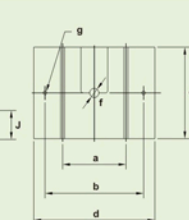
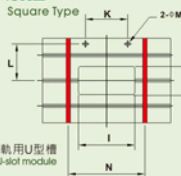
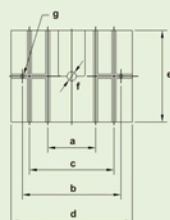
## ● 圓孔型

Hole Type



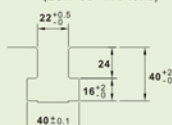
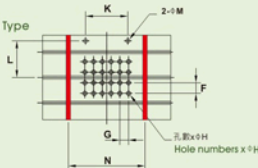
## ● 方孔型

Square Type

滑塊底面尺寸  
The slide base size  
(LSN-80~110 tons)滑塊底面尺寸  
The slide base size  
(LSN-160~260 tons)

## ● 模墊型

Die Cushion Type

T型槽尺寸  
T-slot size  
(LSN-80~110 tons)T型槽尺寸  
T-slot size  
(LSN-160~260 tons)

台盤及滑塊尺寸 Dimensions of bolster &amp; slide

	A	B	C	E	F	G	孔數×φM	I	J	K	L	M	N	a	b	c	d	e	f	g
LSN-80	750	500	150	φ200	75	62	24-φ25	360	180	300	220	φ30	390	300	420	-	530	400	φ50.8	φ23
LSN-110	870	600	180	φ220	75	62	24-φ25	400	200	300	260	φ30	390	350	530	-	650	450	φ50.8	φ23
LSN-160	1000	750	220	φ250	80	75	24-φ25	440	220	400	340	φ30	500	320	600	500	700	500	φ65	φ25
LSN-200	1150	840	250	φ250	100	100	24-φ25	500	250	400	380	φ30	600	340	700	600	860	650	φ65	φ25
LSN-260	1250	860	250	φ280	130	130	24-φ25	520	260	500	400	φ30	750	400	750	600	920	700	φ65	φ25

## 附屬品介紹

### 標準附屬品

1. 濕式剎車離合器
2. 油壓式超負荷裝置
3. 電動黃油潤滑裝置
4. 滑塊及模具平衡裝置
5. 電動式滑塊調整裝置
6. 模高指示器
7. 曲軸角度指示器
8. 電子式計數器
9. 防震腳
10. 維護工具

### 特別附屬品

1. 變頻器/無段變速馬達
2. 光電式安全裝置
3. 氣壓式模墊
4. 滑塊頂料裝置
5. 腳踏操作器
6. 自動送料軸端
7. 快速換模裝置
8. 負荷顯示器
9. 自動化機械手
10. 自動移送裝置

### STANDARD ACCESSORIES

1. Wet clutch & brake
2. Hydraulic overload protector
3. Electrical grease lubrication system
4. Slide & die balancer
5. Electrical slide adjustment device
6. Die height indicator
7. Crank angle indicator
8. Preset counter
9. Rubber mounts
10. Maintenance tool

### OPTIONAL ACCESSORIES

1. Inverter/Variable speed motor
2. Photoelectric safety device
3. Pneumatic die cushion
4. Slide knockout device
5. Foot pedal switch
6. Power take off shaft
7. Quick die change system(Q.D.C.)
8. Load monitor
9. Robot of automatism
10. Automatic transfer device



## 立興陳機械廠股份有限公司

LI HSING CHEN MACHINE TOOL CO., LTD.

總公司 / 新北市土城區土城工業區民權街8號  
**Head Office & Factory/**  
No 8, Min Chuan St., Tu Cheng Industrial Zone,  
Tu Cheng Dist, New Taipei City, Taiwan  
Tel: 886-2-2267-1118(Rep.) Fax: 886-2-2267-1277  
<http://www.lihsingchen.com>  
E-mail: lihsingc@ms15.hinet.net

廣東廠 / 廣東省佛山市南海區羅村鎮街邊村  
**Guangdong Factory/**  
Jiebia Village, Luocun Town, Nanhai Area,  
Foshan City, Guangdong Province, China  
Tel: (0757)86418001-2 Fax: (0757)86418003  
E-mail: taixin2005@126.com

AGENTS: