

KTk[®]

*Precise... Innovative... Efficient
Quality and Stable*



CE ISO 9001: 2000

www.ktk-machinery.com





Bench / Pedestal Drilling Machine

Step Pulley with Belt Adjustment Drive



TB-16



TB-18



SB-18

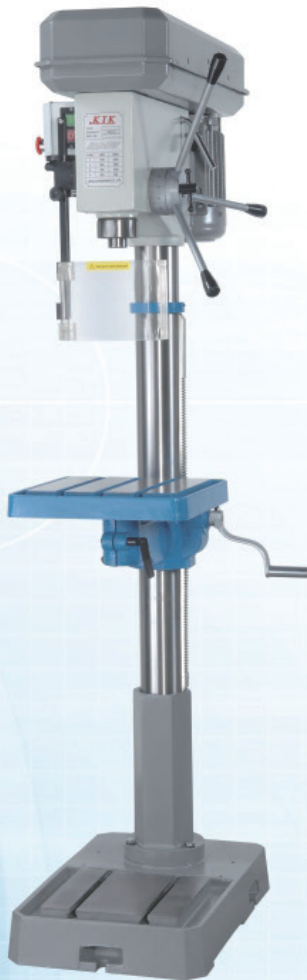


Model	TB-16	TB-18	SB-18
Max .Drilling Capacity	Ø16mm	Ø20mm	Ø20mm
Spindle Taper	MT 2	MT 2/ MT 3	MT 2/ MT 3
Spindle Stroke	80mm	90mm	90mm
Spindle to Column Distance	180mm	180mm	180mm
Number of Speed	9	12	12
Spindle Speed rpm	190-2800	230-3100	230-3100
Diameter of Column	Ø80mm	Ø80mm	Ø80mm
Dimension of Table	300x300mm	300x300mm	300x300mm
Dimension of Base	450x310mm	450x310mm	500x310mm
Spindle to Table Distance	420mm	485mm	700mm
Spindle to Base Distance	650mm	725mm	1250mm
Motor	0.75kw	1.1kw	1.1kw
Overall Height	1080mm	1080mm	1680mm
Weight	70kg	85kg	110kg



Bench / Pedestal Drilling Machine

Step Pulley with Belt Adjustment Drive



SB-25



SB-32



Model	SB-25	SB-32
Max .Drilling Capacity	Ø25mm	Ø30mm
Spindle Taper	MT 3	MT 4
Spindle Stroke	120mm	140mm
Spindle to Column Distance	230mm	230mm
Number of Speed	9	9
Spindle Speed rpm	230-1910	230-1910
Diameter of Column	Ø92mm	Ø102mm
Dimension of Table	350x350mm	400x400mm
Dimension of Base	600x380mm	600x380mm
Spindle to Table Distance	720mm	670mm
Spindle to Base Distance	1250mm	1250mm
Motor	1.5kw	2.0kw
Overall Height	1800mm	1800mm
Weight	180kg	210kg



Bench / Pedestal Auto Feed Drilling Machine

Step Pulley with Belt Adjustment Drive



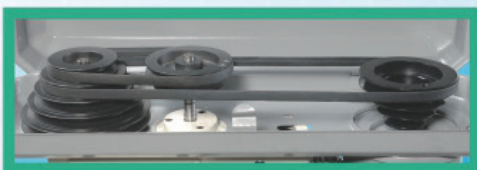
TB-120



SB-250



Auto feed



Model	TB-120	SB-250
Max .Drilling Capacity	Ø16mm	Ø25mm
Spindle Taper	MT 2	MT 3
Spindle Stroke	80mm	140mm
Spindle to Column Distance	180mm	230mm
Number of Speed	4	6
Spindle Speed rpm	480-1980	200-1600
Diameter of Column	Ø80mm	Ø102mm
Dimension of Table	300x300mm	400x400mm
Dimension of Base	450x310mm	600x380mm
Spindle to Table Distance	420mm	730mm
Spindle to Base Distance	620mm	1270mm
Motor	0.75kw	1.5kw
Overall Height	1060mm	1800mm
Weight	100kg	220kg



Bench / Pedestal Drilling and Tapping Machine

Step Pulley with Belt Adjustment Drive



TB-340



SB-550



Model	TB-340	SB-550
Max .Drilling Capacity	Ø16mm	Ø25mm
Max .Tapping Capacity	M 12	M 20
Spindle Taper	MT 2	MT 3
Spindle Stroke	80mm	120mm
Spindle to Column Distance	180mm	230mm
Number of Speed	9	9
Spindle Speed rpm	190-2800	230-1910
Diameter of Column	Ø80mm	Ø92mm
Dimension of Table	300x300mm	350x350mm
Dimension of Base	450x310mm	600x380mm
Spindle to Table Distance	420mm	700mm
Spindle to Base Distance	650mm	1250mm
Motor	0.75kw	1.5kw
Overall Height	1080mm	1800mm
Weight	80kg	180kg



Bench / Pedestal Variable Speed Drilling Machine

*Step Pulley with Belt Adjustment Combine Brushless Motor
Electric Variable Speed Adjustment Drive*



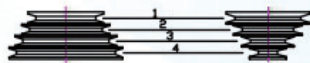
TB-16V



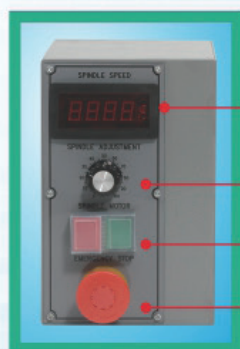
TB-18V



TB-120V



	R P M
1	1140 - 3400
2	790 - 2340
3	520 - 1530
4	330 - 950



- Digital speed display**
- Speed adjustment knob**
- Power switch**
- Emergency stop**

Model	TB-16V	TB-18V	TB-120V
Max .Drilling Capacity	Ø16mm	Ø18mm	Ø16mm
Spindle Taper	MT 2	MT 2	MT 2
Spindle Stroke	80mm	90mm	90mm
Spindle to Column Distance	180mm	180mm	180mm
Number of Speed	Variable Speed		
Spindle Speed rpm	330-3400	330-3400	
Diameter of Column	Ø80mm	Ø80mm	Ø80mm
Dimension of Table	300x300mm	300x300mm	300x300mm
Dimension of Base	450x310mm	450x310mm	450x310mm
Spindle to Table Distance	420mm	485mm	420mm
Spindle to Base Distance	650mm	700mm	520mm
Motor Single Phase	0.75kw	0.75kw	0.75kw
Overall Height	1060mm	1080mm	1080mm
Weight	70kg	85kg	100kg



Bench / Pedestal Variable Speed Drilling Machine

*Step Pulley with Belt Adjustment Combine Brushless Motor
Electric Variable Speed Adjustment Drive*



SB-16V



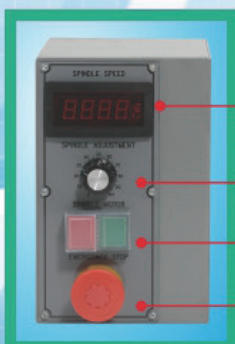
SB-25V



SB-32V



	R P M
1	260 - 560
2	430 - 930
3	690 - 1500



- Digital speed display
- Speed adjustment knob
- Power switch
- Emergency stop

Model	SB-16V	SB-25V	SB-32V
Max .Drilling Capacity	Ø18mm	Ø25mm	Ø30mm
Spindle Taper	MT 2/ MT 3	MT 3	MT 4
Spindle Stroke	90mm	120mm	140mm
Spindle to Column Distance	180mm	230mm	230mm
Number of Speed	Variable Speed		
Spindle Speed Range rpm	330-3400	260-1500	260-1500
Diameter of Column	Ø80mm	Ø92mm	Ø102mm
Dimension of Table	300x300mm	350x350mm	400x400mm
Dimension of Base	500x320mm	600x380mm	600x380mm
Spindle to Table Distance	700mm	720mm	670mm
Spindle to Base Distance	1250mm	1250mm	1250mm
Motor Single Phase	0.75kw	1.5kw	1.5kw
Overall Height	1680mm	1800mm	1800mm
Weight	110kg	180kg	210kg



Radial Drilling Machine

Step Pulley Belt Adjustment Drive



RDP-20A

Model	RDP-20A
Max .Drilling Capacity	Ø16mm
Spindle Taper	MT 2
Spindle Stroke	80mm
Number of Speed	9
Spindle Speed rpm	190-2600
Spindle to Column Distance	150-450mm
Vertical Travel of Column	450mm
Title of Spindle Head	L/R 90
Base Size	450x850mm
Working Surface	450x460mm
Motor	0.75kw
Overall Height	1850mm
Weight	95kg

High Speed Drilling Machine

Step Pulley Belt Adjustment Drive

Model	M360
Max .Drilling Capacity	Ø6mm
Spindle Taper	JT 6/ ER16
Spindle Stroke	60mm
Number of Speed	3
Spindle Speed rpm	6000-8000-10000
Spindle of Column	155mm
Base Dimension	380x200mm
Motor	0.5kw
Overall Height	730mm
Weight	48kg



M360



Model	Table	Size
SB-18	300x300mm	4 "
SB-25	350x350mm	5 "
SB-32	400x400mm	5 "







LIANG LIH MACHINE CO., LTD.

No. 247, Yasiou Rd., Daya Dist., Taichung City 428, Taiwan
TEL: 886-4-2560-1100 FAX: 886-4-2560-1012
E-mail: ktk.kaiwen@msa.hinet.net
<http://www.ktk-machinery.com>
<http://www.ktk.com.tw>

