



**ATOLI**  
愛托力



本公司通過 ISO-9001  
國際品質保證

# 磁性鑽台系列

PORTABLE MAGNETIC CUTTING UNIT SERIES

## 高效率、高精密

掌握行家的每一項要求，為您贏得先機！

通過ISO-9001國際品質保證

磁性鑽台  
MAGNETIC STAND FOR DRILL

攜帶式磁性鑽台  
PORTABLE MAGNETIC CUTTING UNIT

全自動攜帶式高速鑽孔機  
FULL AUTOMATIC-PORTABLE MAGNETIC CUTTING UNIT

H型鋼攜式高速鑽孔機  
HIGH SPEED H TYPE DRILLING MACHINE

H型鋼高速鑽孔機  
HIGH SPEED H TYPE STEEL DRILLING MACHINE

強力型電鑽系列  
HEAVY-DUTY ELECTRIC DRILL SERIAL

高速精密桌上鑽床  
HIGH SPEED PRECISION BENCH DRILL

油壓打孔機  
HYDRAULIC PUNCHING MACHINE



**承通有限公司**  
NEW CHAIN-TONGS CO., LTD.  
<http://www.atoli.com>





德國紐倫堡展金牌證書



印尼專利證書



日本專利證書



泰國專利證書



中華民國專利證書



大陸專利



經濟部中央標準局專利證書



ISO-9001證書



馬來西亞證書



通過ISO-9001國際品保認證  
獲選87年全國發明展金頭腦獎  
專利權號新型第112416號  
榮獲1999年德國紐倫堡發明展金牌獎

## CONTENTS

公司沿革 HISTORY	1
經營理念與未來展望 MANAGEMENT CONCEPT & PROSPECT	2
磁性鑽台 MAGNETIC STAND FOR DRILL	3
強力型電鑽系列 HEAVY-DUTY ELECTRIC DRILL SERIAL	4
H型鋼攜帶式高速鑽孔機 HIGH SPEED H TYPE DRILLING MACHINE	5
H型鋼攜帶式高速鑽孔機 HIGH SPEED H TYPE DRILLING MACHINE	6
H型鋼攜帶式高速鑽孔機 HIGH SPEED H TYPE DRILLING MACHINE	7
新型鐵軌專用鑽孔機 NEW DRILLING MACHINE FOR RAIL	8
高速精密桌上鑽孔機 HIGH SPEED PRECISION BENCH DRILL	10
攜帶式手動磁性鑽孔機 PORTABLE MANUAL DRILLING MACHINE	11



# 公司沿革

## HISTORY

- 1** 中華民國六十三年（西元1974年）在台中市南區學府路91號（舊稱忠孝路一巷一號）創立建和機械五金公司，從事機械五金販賣，銷售業務是本公司的起步，也是萌芽。
- 2** 六十五年（西元1976年）擴大服務層面在太平鄉十九甲增設生產部，產製高速精密鑽床，六十六年研究開發生產製造空壓鉚釘機。
- 3** 七十年擴展業務，增設國外部，辦理產品外銷事宜，以東南亞、香港為海外主要銷售地區，分別在泰國、印尼、新加坡、馬來西亞、香港等國家委請股實公司為總代理經銷本公司產品，和國內北、中、南各地及中國大陸總經銷串連成廣大的銷售網，銷售面擴展到歐洲、澳洲、美洲。
- 4** 七十二年再開發製造油壓鉚釘機、空壓雙軸鉚釘機。
- 5** 七十二年（西元1983年）三月十日為提昇服務品質及企業形象，再開創設立“承通有限公司”，在大家的祝福聲中，本公司創設誕生了，加強生產陣容，提高生產力及國際水準，並斥巨資購買土地將生產部的廠房建設於大里市東興路535巷6弄6號於民國七十八年落成啓用。
- 6** 民國八十年和財團法人工業技術研究院機械工業研究所技術合作，研究開發鋼骨自動鑽孔機械新產品。民國八十三年七月參加經濟部中小企業處水長流互助合作交流小組，和相關的中小企業，彼此觀摩、磋商、研究、促進自我成長。
- 1** Chan-Ho Machinery Hardware Company was established at No.91 Hseuh-Fu Road South Dist Taichung in 1974. (The old name for the address is No. 1 Sec 1 Chung-Hsioh Road) and is engaged in the field of Hardware Machinery business.
- 2** To extend the service. The production Department was set up to produce a High Precision Drilling Machine at 19 Chia Tai-Ping Hsien in 1976. Later. The Production Department developed and Air Hydraulic Riveting Machine and started production in 1977.
- 3** Due to the extension of the business, an Export Department was set up in 1980 to be responsible for export affairs. South...East Asia and Hong Kong were the main market. Also, Ying-Shih Corporation was authorized to be the General Agent in Tahiland, Indonesia, Singapore, Malaysia and Hong Kong to sell products and to connect the market with distributors in North, Middle, South Taiwan and mainland china. Now, the market is extended to Europe, America and Australia.
- 4** A Hydraulic Machine and an Air Hydraulic Double-Axis Rivet Machine were developed, production of these machines started in 1983. And started production in 1983.
- 5** To upgrade the service quality the and company image. Cheng-Tung Limited Company was founded on March 10. 1983. In order to strengthen production and upgrade productivity to international standard, the company bought land at No. 6 Alley 6 Lane 535 Tung-Hsin Road Da-Le Hsien Taichung foruse as a plant site. This plant started its operation in 1989.
- 6** In 1991, A Steel Automatic Drilling Machine was developed throuch technical the technique cooperation with the department of IRTI. In July 1994, We Joined the "Shui Chang Liu mutual cooperation exchange team" to learn, discuss and study with relevant small & middle enterprised for advancing self-growth.



### 經營理念

- 1 以「冷靜」、「堅忍」、「沈著」、「樂觀」為精神標竿，以「研究」、「發展」、「創新」、「進步」為努力方針。
- 2 在高科技精密技術的時代潮流中，生產製造高品質的五金機械為經濟建設提供高水準的服務。
- 3 設計、製造、生產、經營、銷售、服務一元化，以多功能、全方位的生產能量，科學管理的信念，人性化的企業倫理，永續經營，團結合作，和諧而屹立長青。

### 開創國際新紀元

在科學發達、技術精進的時代裡，順應日新月異的潮流，達到(ISO-9001)品質管理，品質保證的國家標準產銷世界水準的五金機械，投入世界經濟活動行列，開創「承通」的企業天地。

### Management Concept

- 1 (Calm), (Perseverance), (Coolness) and (Optimism) are our spirit mark. (Research), (Development), (Creativity), and (Progress) are our goals.
- 2 In high precision technology tide, it offers high quality service for economic construction by producing High quality Hardware Machine.
- 3 Through design, creation, production, management, sales to achieve one way service. And a long-lasting business will be made by multi-function all-around productivity, science management concept, humanize corporation ethnic, cooperation and harmony.

### Prospect

In order to achieve national standard of quality management (ISO 9001) we guarantee for prosperous and precise technology future. Furthermore, create, "Cheng-Tung" enterprise world by producing world-standard hardware machinery and getting involve with world economic activities.



# 磁性鑽台

## MAGNETIC STAND FOR DRILL

### 規格SPECIFICATIONS

型式 TYPE	穿孔徑 Dia of drilling mm	電源Power source Voltage(V)Power(W)	最大深度 Stroke(mm)	回轉度 Turning angle	前後移動 Shift for ward & back ward (mm)	磁石寸法 Magnet(mm)	最大磁力 Magnet Holding Power	高度 Height(mm)	淨重 N.W.(kg)
TC-3	2-10ø	110.220 78	90			100x130	450	280	8
TC-6S	2-18ø	110.220 78	200	330°	20	180x105	800	400	18.5
TC-6R	2-18ø	110.220 78	200	330°	20	150ø	800	400	18.5
TC-10R	2-25ø	110.220 78	250	330°	20	160ø	1000	530	25
TC-10S	2-25ø	110.220 78	250	330°	20	105 x 220	1000	530	26
TC-12W	2-32ø	110.220 78	280	50°	20	135 x 260	1500	530	37
TC-12S	2-32ø	110.220 78	280	330°	20	135 x 260	1500	530	37



TC-3 [ 電鑽另購 ]

TC-6R  
可裝TOSHIBA  
DR-13B 1/2電鑽  
DR-20S1 3/4電鑽

TC-6S  
可裝TOSHIBA  
DR-13B 1/2電鑽  
DR-20S1 3/4電鑽

TC-10R



TC-12W

TC-12S

TC-10S [ 電鑽另購 ]



# 強力型電鑽系列 TC-25 • TC-32

## HEAVY-DUTY ELECTRIC DRILL SERIAL



TC-25 • TC-32

配備零件另購



ATL-14

### 規格 SPECIFICATIONS

鑽孔能力	Drilling condition	TC-25
電壓	Voltage	60HZ 110/220V
電流	Current	12.7/6.4A
消耗電力	Electricity consumption	1300W
回數轉	Number of reversing	370 r.p.m.
重量	Weight	12kg

### 規格 SPECIFICATIONS

鑽孔能力	Drilling condition	TC-32
電壓	Voltage	60HZ 220V
電流	Current	7.7A
消耗電力	Electricity consumption	1600W
回數轉	Number of reversing	330 r.p.m.
重量	Weight	12.5kg



# H 型鋼攜帶式高速鑽孔機 TC-35

## HIGH SPEED H TYPE DRILLING MACHINE

TC-35



低啓動裝置，最適用於高硬度鋼材切割



手動操作情形

### 1 低啓動裝置：

低啓動裝置設計，最適用於高硬度鋼材切割作業。

### 2 鉗孔力特強：

低啓動裝置設計，最適用於高硬度鋼材切割作業，裝配日本TOSHIBA進口電鉗馬達，鉗孔力特強。

### 3 不鏽鋼油杯式給油系統：

使用不鏽鋼油杯容量大，摔不破，單點控制油槽更換之便捷設計，即使中途給油不會中斷鑽孔作業。

### 4 性能卓越，堅固耐用，無故障率：

周詳的設計，將注油器及動力馬達保護在電鑽本體之內，不受外力衝擊。

### 1 SLOW START SYSTEM:

The slow start mechanism is designed to cope with cutting hard oxidized surfaces of rolled steel materials.

### 2 POWERFUL DRILLING:

Low start device design, and most suitably used for cutting of high hardness steel material. Mating to Japanese electric drilling motor, the drilling capacity is extremely powerful.

### 3 CARTRIDGE TYPE OIL TANK SYSTEM:

Use of stainless steel oil cup with big capacity, never be broken off, single point oil tank control, convenient design for replacement, and even oiling in the middle way, the drilling operation is still unable to be stopped.

### 4 SOLIDLY DESIGNED FOR OUT-STANDING DURABILITY:

Designed with the greatest possible consideration for lasting quality, it is provided with a switch knob protector, an oil dropper inside the electric drill, and the feed motor is fully enclosed within the body of the machine.

電源 (單相)		交流電	交流電
Power Source(Single Phase)		110V/120V 50/60HZ	220V/240V 50/60HZ
馬達 Motor	額定馬力輸出 Rated output	670W, 370W	
	額定安培 Rated ampaer	6.4	3.2
	空轉速度 No-load speed	700 r.p.m.	
鑽孔尺寸	直徑 Diameter	3m/m thru 35m/m	
	最大深度 Max. depth	30m/m ( 50m/m)	
磁鐵尺寸 Magnet dimensions		174m/m x 94m/m x 56m/m	
磁鐵吸持動力 Magnet holding power		800 kgf	
重量 Weight		16 kgf	

■上述之規格與形體可加以進行變更而無須事前通知。



# H 型鋼攜帶式高速鑽孔機 TC-33

## HIGH SPEED H TYPE DRILLING MACHINE



**ATOLI**

愛托力



**配件：**

1. ATOLI刀削油精一罐。
2. 六角板手一組。
3. 中心頂針長、短各一。
4. 說明書一份。
5. 德式T型板手一支。

**Accessories:**

1. ATOLI Cutter oil: 1 can.
2. Hex. Spanner: 1 set
3. Center long and short size each 1 pc.
4. User's Manual: 1 copy
5. German-type T-spanner: 1 pc.

- 1 軸承固定套：**  
固定刀軸部份使用軸承固定套設計，免去更換銅套之不便。
- 2 吸力強：**  
磁石吸力特強足足有800kg吸力。
- 3 重量輕：**  
輕巧靈活攜帶方便，重量僅12.6kg比一般鉋孔機還輕。
- 4 鉋孔力特強：**  
低啓動裝置設計，最適用於高硬度鋼材切割作業，裝配日本GIKEN進口電鑽馬達，鉋孔力特強。

- 1 BEARING FIXATION:**  
Shaft fixation is designed to be fixed by bearing without having inconvenient on housing replacement.
- 2 POWERFUL SUCTION:**  
Powerful magnetic stone with 800kg suction force.
- 3 LIGHT WEIGHT:**  
Handy and convenient for carrying, its weight is only 12.6 lighter than ordinary drills.
- 4 POWERFUL DRILLING:**  
Low start device design, and most suitably used for cutting of high hardness steel material. Mating to Japanese electric drilling motor, the drilling capacity is extremely powerful.

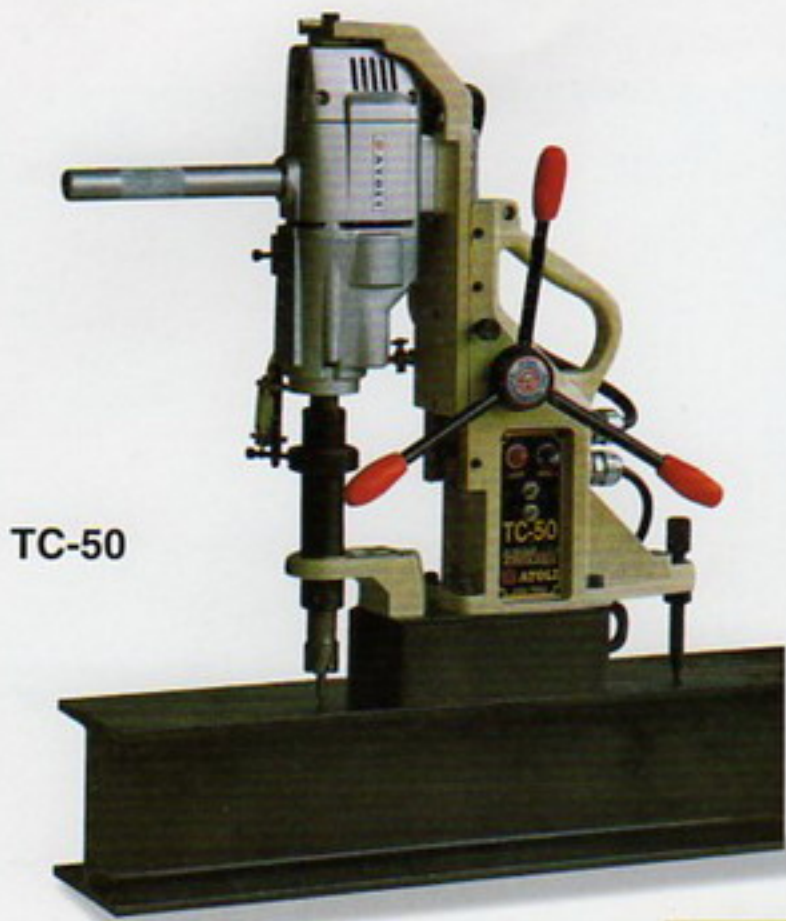
電源 ( 單相 )		交流電
Power Source (Single Phase)		AC220V-240V/50/60Hz
馬達 Motor	額定馬力輸出 Rated output	620W
	額定安培 Rated ampere	3A
	空轉速度 No-load speed	750 r.p.m.
鑽孔尺寸 Hole size	直徑 Diameter	14mm thru 35mm
	最大深度 Max. depth	24mm
磁鐵尺寸 Magnet dimensions		174mm x 94 x 56mm
磁鐵吸持動力 Magnet holding power		800 kgs
重量 Weight		12.6 kgs

■上述之規格與形體可加以進行變更而無須事前通知。  
These specifications and the shape may be changed for improvement without prior notice.



# H 型鋼高速鑽孔機 TC-50 • TC-52

## HIGH SPEED H-TYPE STEEL DRILLING MACHINE



TC-50

### 攜帶式磁性鑽台 TC-52

### PORTABLE MAGNETIC CUTTING UNIT

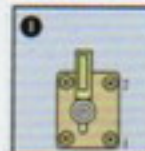


TC-52

電源 (單相) Power Source(Single Phase)		交流電 110V/120V 50/60HZ	交流電 220V/240V 50/60HZ
馬達 Motor	額定馬力輸出 Rated output	850W	
	額定安培 Rated ampere	7A	3.5A
	空轉速度 No-load speed	500 r.p.m. /780 r.p.m.	
鑽孔尺寸	直徑 Diameter	16mm thru 50mm (23/32" thru 1.31/32")	
	最大深度 Max. depth	50m/m ( 1.31/32")	
磁鐵尺寸 Magnet dimensions		200mm x 100mm (7-7/8" x 3-15/16")	
磁鐵吸持動力 Magnet holding power		1,000 kgf	
重量 Weight		25 kgf(55磅)	

■上述之規格與形體可加以進行變更而無須事前通知。  
These specifications and the shape may be changed for improvement without prior notice.

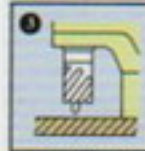
#### 切鑽程序



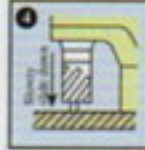
**1 低啓動裝置：**  
低啓動裝置設計，最適用於高硬度鋼材切割作業。



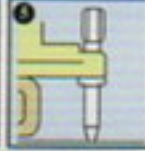
**2 裝有手動迴路設計：**  
能立刻準備下次鑽孔作業動作，當完成鑽孔即迅速退刀。



**3 匣式油槽**  
大容量，單點控制油槽更換之便捷設計，即使中途給油也不會中斷鑽孔作業。



**4 性能卓越，堅固耐用，無故障率。**  
同樣的設計，將注油器及動力馬達保護在電鑽本體之內，不受外力衝擊。



**5 電子控制器**  
速度超過5安培時，標誌訊號燈會顯示，將自動停止作業，重新啓動開關後，再開始作業。

**1 SLOW START SYSTEM:**  
The slow start mechanism is designed to cope with cutting hard oxidized surface of rolled steel materials.

**2 RETURN SYSTEM:**  
The return system allows the next hole to be worked immediately. When the hole is completed, the electric drill lifts up speedily then stops.

**3 CARTRIDGE TYPE OIL TANK:**  
The oil tank is a cartridge type with a big capacity. One-touch oil tank replacement allows holes to be cut successively without stopping work.

**4 SOLIDLY DESIGNED FOR OUTSTANDING DURABILITY:**  
Designed with the greatest possible consideration for lasting quality, it is provided with a switch knob protector, an oil dropper inside the electric drill, and the feed motor is fully enclosed within the body of the machine.

**5 ELECTRONIC CONTROLLER:**  
When speed is over 5ampere, the signal lamp will be lighted, and the work will stop automatically. Turn on the restraint switch before operation.

電源 (單相) Power Source(Single Phase)		交流電 110V/120V 50/60HZ	交流電 220V/240V 50/60HZ
馬達 Motor	額定馬力輸出 Rated output	1100W	
	額定安培 Rated ampere	10A	5A
	空轉速度 No-load speed	500 r.p.m. /800 r.p.m.	
鑽孔尺寸	直徑 Diameter	13mm thru 50mm	
	最大深度 Max. depth	50m/m ( 1-31/32")	
磁鐵尺寸 Magnet dimensions		200mm x 100mm (7-7/8" x 3-15/16")	
磁鐵吸持動力 Magnet holding power		1,000 kgf	
重量 Weight		26 kgf	

■上述之規格與形體可加以進行變更而無須事前通知。  
These specifications and the shape may be changed for improvement without prior notice.



# H 型鋼高速鑽孔機 TC-52 PLUS

## HIGH SPEED H-TYPE STEEL DRILLING MACHINE



### TC-52圖文說明:

- ①不鏽鋼式油杯:  
堅固不易破裂,與一般噴漆槍用油漆杯相同,方便更換!
- ②控制流量開關:  
可控制冷卻切削液之流量,以節省冷卻液用量!
- ③強力型ATOLI電鑽:  
專門設計強力鑽孔用,扭力及速度超強,馬達並受電子控制器所保護,能防止負載過大,並有良好的散熱設計,運轉時馬達不會發熱!
- ④二段變速開關:  
依鑽孔徑大小不同分500RPM與800RPM兩種鑽孔速度,使鑽孔作業更為省力方便!
- ⑤L型加強式固定座:  
使進刀鑽孔時更穩定,降低孔徑公差係數!
- ⑥採用標準穴鑽刀柄:  
適用所有規格之穴鑽,並採用內孔螺絲固定穴鑽方式,不易脫落,故障率低!
- ⑦特殊電磁吸鐵:  
磁石尺寸超大,電磁吸力足足有1000kg,磁性超強,使鑽孔時不會晃動,且工作物越厚,吸力就越大!
- ⑧輔助螺桿:  
使機台整體結構在鑽孔時,更加平穩固定!
- ⑨堅固型機體結構設計:  
穩固耐用,並將電子控制器裝置其中,提供絕佳的保護,不受外力所衝擊!

### 攜帶式磁性鑽台 TC-52

#### PORTABLE MAGNETIC CUTTING UNIT



### 新型鐵軌專用鑽孔機TC-52 PLUS

#### 特點:

- 1.鐵軌專用鑽孔機,可快速完成鑽孔作業,提高作業效率,節省成本
- 2.機台本身附有冷卻系統,可降低鑽孔時所產生之高熱,鋼結構破壞性極低!
- 3.特殊結構設計,攜帶方便,移動性高,可縮短作業時間
- 4.使用深孔圓穴鋸鑽,以空心切銷方式鑽孔,速度極快,比一般傳統鑽頭快3倍
- 5.附有斷電保護系統,鑽孔負載過量時,會自動切斷電源,以保護馬達,耐用故障率低
- 6.節省勞力、時間之優點,與不需專業技術就能切割出完美孔洞之特性更是受到使用者喜愛





# 全自動攜帶式高速鑽孔機 ATT-35 · ATT-50

## FULL AUTOMATIC-PORTABLE MAGNETIC CUTTING UNIT

ATT-50



ATT-50 (側面)



ATT-35 (側面)

ATT-35



- 全自動功能設計：**  
有三段自動變速進刀，無須人力手動操作，並能減低刀刃磨損率。
- 低啓動裝置：**  
低啓動裝置設計，最適用於高硬度鋼材切割作業，剛開始鑽孔時，會慢慢自動進刀。
- 裝有自動進退刀設計：**  
無須專業技術，可切割出完美洞孔，根據其切割負荷量及尺寸大小，可自動地控制進刀的速度。
- 裝有自動迴路設計：**  
能立刻準備下次鑽孔作業動作，當完成鑽孔動作即迅速自動退刀。
- 不鏽鋼匣式油杯：**  
堅固耐用之不鏽鋼油杯及不鏽鋼匣式油杯更換方便之設計，即使中途給油也不會中斷鑽孔作業。
- 性能卓越，堅固耐用，無故障率：**  
周詳的設計，將注油器及動力馬達保護在電鑽本體之內，不受外力衝擊。

- FULLY AUTO FUNCTION DESIGN:**  
with 3-step speed-change auto feed, needless to be operated by manual and able to reduce the wearing rate for blade.
- SLOW START SYSTEM:**  
The slow start mechanism is designed to cope with cutting hard oxidized surfaces of rolled steel materials. The electric drill is advanced slowly during the first few seconds of cutting.
- AUTOMATIC FEED SYSTEM:**  
The automatic feed system allows perfect holes to be cut without the need for expertise. The rate of feed is controlled automatically according to the cutting load and cutter sizes.
- AUTOMATIC RETURN SYSTEM:**  
The automatic return system allows the next hole to be worked immediately. When the hole is completed, the electric drill lifts up speedily then stops.
- CARTRIDGE TYPE OIL TANK SYSTEM:**  
Use of stainless steel oil cup with big capacity, never be broken off, single point oil tank control, convenient design for replacement, and even oiling in the middle way, the drilling operation is still unable to be stopped.
- SOLIDLY DESIGNED FOR OUTSTANDING DURABILITY:**  
Designed with the greatest possible consideration for lasting quality, it is provided with a switch knob protector, an oil dropper inside the electric drill, and the feed motor is fully enclosed within the body of the machine.

說明 Description		ATT-50	ATT-35
電源(單相) Power Source (Single Phase)		AC 220V-240V 50/60Hz	AC 220V-240V 50/60Hz
孔徑能力 Hole Capacity		16mm thru 50mm	14mm thru 35mm
最大磁力 Magnet Holding Power		1000kg	800kg
磁性消耗 Magnet Power Consumption		44w	44w
磁石尺寸 Magnet Dimensions		200mm x 100mm x 172mm	175mm x 95mm x 46mm
最大行程 Maximum Stroke		80mm	80mm
重量 Weight		29kg	21kg
總線長度 Cable Length		3M	3M
Drill Motor	定格耗量 Rated Power Consumption	830W	
	定格電流 Rated Amperes	6A	5A
	總高度 Total Height	520mm	
	無負載迴轉 No-load Speed	650 rpm.	

■上述之規格與形體可加以進行變更而無須事前通知。  
These specifications and the shape may be changed for improvement without prior notice.



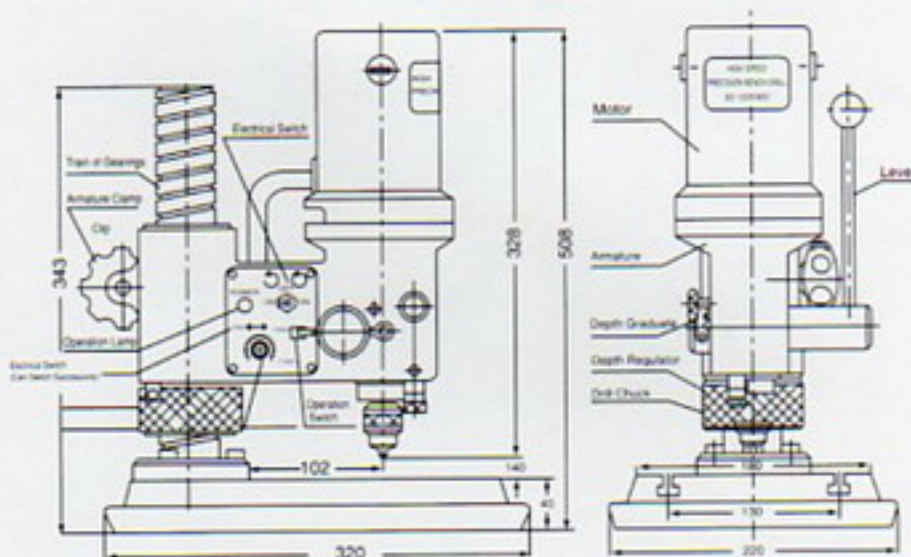
# 高速精密桌上鑽孔機 BDS-300

## HIGH SPEED PRECISION BENCH DRILL



**ATOLI**

愛托力



### 用途：

眼鏡、錶、電子、黃金、銅、鋼、鐵、各種精密金屬製品鑽孔都可使用。

### 優點：

- 各部都經過高度精密加工，最適於精密的鑽孔作業。
- 打擊調整專門用於細微的調整上，為操作簡單的一種把手 (knob)。
- 在桌上操作面上裝有T型槽座，安裝鑽孔道具上很方便。
- 槓桿長度能調整接觸角度，故操作上容易。

### APPLICATION:

Glasses, watch, electron, gold, copper, steel, iron; all kinds of precise metal products can be drilled perfectly.

### CHARACTERISTICS:

- High precise process in all parts; applicable to accurate drill operation.
- Best efficient in fine adjustment, with a easy handle knob.
- Easy to install the drill parts for having a "T" style tank upon the bench.
- Simple operation with an active lever can adjust contact angle.

### 性能：

鑽孔能力 (最大)	
鋼鐵材料的情形	.....0.2~3mm
黃銅、鋁製品的情形	.....0.2~4mm
可加工的最大直徑	.....200mm
主軸轉動數	.....2000~12000rpm
主軸行程	.....28mm
桌上操作面	.....180x180mm
從夾頭頂端到桌上操作面的最大距離	.....140mm
馬達	.....110V 3A 50/60Hz
高度 (最大)	.....508mm
重量	.....24kg

### QUALITIES:

Drill capacity(maximum)	
Steel & iron	.....0.2~3mm
Brass & aluminum products	.....0.2~4mm
Swing	.....200mm
Number of revolutions of main shaft	.....2000~12000rpm
Capacity of drilling of main shaft	.....28mm
Operation surface upon bench	.....180 x180mm
Largest distance between drill chuck and bench	.....140mm
Motor	.....110V 3A 50/60Hz
Height	.....508mm
Weight	.....24kg





# 攜帶式手動磁性鑽孔機 TC-100

PORTABLE MANUAL DRILLING MACHINE

**New**



Designed to use  
**Jetbroach Carbide Tipped  
 Annular Cutters & Twist Drill !**  
 可使用深孔穴鑽及一般麻花鑽頭！



## 特色

1. 最大鑽孔能力 $\phi 100 \times 50$ m/m深度。
2. 可經由MT3摩司斜柄變換使用深孔穴鑽以及麻花鑽頭。
3. 擁有轉速330rpm的2-1/2 HP強大馬達。
4. 強力磁鐵機座擁有1800kgf吸力。
5. 冷卻方式可經由刀軸內部噴冷卻液。

## Features:

1. Extra large 100x50 m/m hole drilling capacity.
2. Accepts Jetbroach cutters and Twist drill through MT3 shank.
3. Heavy duty 2-1/2 horsepower 330 rpm motor.
4. Improved magnetic base with amazing 1800 kgf holding power.
5. Sealed through spindle coolant system.

## 附件

1. ATOLI切削油精一罐
2. 六角板手1組
3. 中心頂針長短各1支
4. 說明書1本
5. 德式T型板手1支
6. MT3穴鑽刀軸1支
7. 鑽夾頭5/8"附柄1支

## Standard Accessories:

1. ATOLI cutter Oil 1 pc.
2. Hex key wrench 1 set.
3. Center pin (long and short size each 1 pc).
4. User's Manual.
5. German-type T-Spanner 1pc.
6. JetBroach MT3 shank 1pc.
7. Drill Chuck 5/8" with shank 1pc.

The largest capacity drilling machine in the ATOLI Machines line. Designed for deep hole drilling applications up to 100m/m through 50m/m thick material

型 式 Model		TC-100	
電 壓 (單 相) Power Source (single Phase)		230 V AC 50/60 Hz	
電 機 Drill Motor	消耗功率 Rated Power Consumption	1600 W	
	電流(安培) Rated Current	7.4 A	
	空負載轉速 No load speed min <sup>-1</sup> (rpm)	330 rpm	
鑽孔能力 Hole-cutting capacity	孔 徑 Hole Diameter	板 厚 Plate Thickness	
深孔穴鑽 Side-Lock type Jetbroach	32 ~ 100 m/m	50 m/m	
麻花鑽頭 Twist Drill	2 ~ 32 m/m	150 m/m	
磁石吸力 Magnet Holding Power (kgf)	1800 kgf		
磁石尺寸 Magnet Dimensions (m/m)	135 x 260 m/m		
機台總重 Mass (weight) (kg)	50 kg		
機台高度 Height (m/m)	575 m/m		





### LL-350

品名	直徑	刃數	柄徑	外徑公差	孔深度	價格
深孔穴鑽	14~30mm	6	19.05	NOMINAL DIA +0-0.08	35L	2000
深孔穴鑽	31~35mm	6	19.05	NOMINAL DIA +0-0.08	35L	2400

### LL-500

品名	直徑	刃數	柄徑	外徑公差	孔深度	價格
深孔穴鑽	18~30mm	9	19.05	NOMINAL DIA +0-0.08	50L	2250
深孔穴鑽	31~35mm	9	19.05	NOMINAL DIA +0-0.08	50L	2700
深孔穴鑽	36~40mm	9	19.05	NOMINAL DIA +0-0.08	50L	3060
深孔穴鑽	41~45mm	9	19.05	NOMINAL DIA +0-0.08	50L	3450
深孔穴鑽	46~50mm	9	19.05	NOMINAL DIA +0-0.08	50L	3840

如需要特殊規格之穴鑽者，則需一個月前訂購。





**建和機械五金公司**  
**愛托力有限公司**  
**ATOLI MACHINERY CO., LTD.**

公司地址：台中市南區學府路91號  
 OFFICE: 91, Hisioh Fu Rd., Taichung, Taiwan, R.O.C  
**Tel: 886-4-22870860 • Fax: 886-4-22860876**  
<http://www.atoli.com>  
 E-mail: atoli@atoli.com

**承通有限公司**

**NEW CHAIN-TONGS CO., LTD.**

工廠地址：台中縣大里市東興路535巷6弄6號  
 FACTORY: 6, Alley 6, Lane 535, Tung Hsing Rd.,  
 Taichung, Taiwan, R.O.C

**Tel: 886-4-24060830 • Fax: 886-4-24064186**  
 FAX: 886-4-24064187