

零點定位系統組裝模式 ZERO-POINT-SYSTEMS

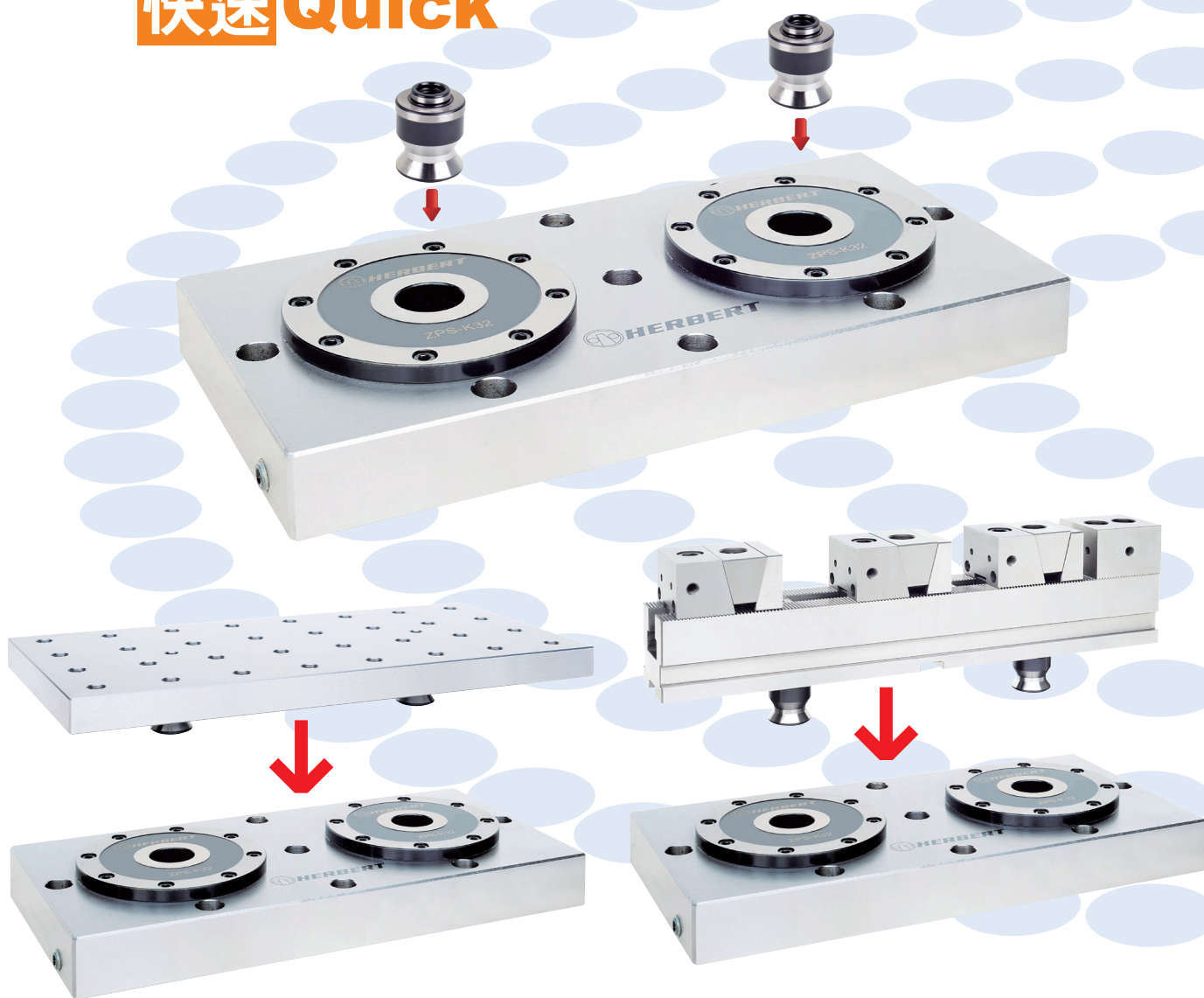
零點定位系統的精華

The Essence of Zero-Point system is.

效率 Efficiency

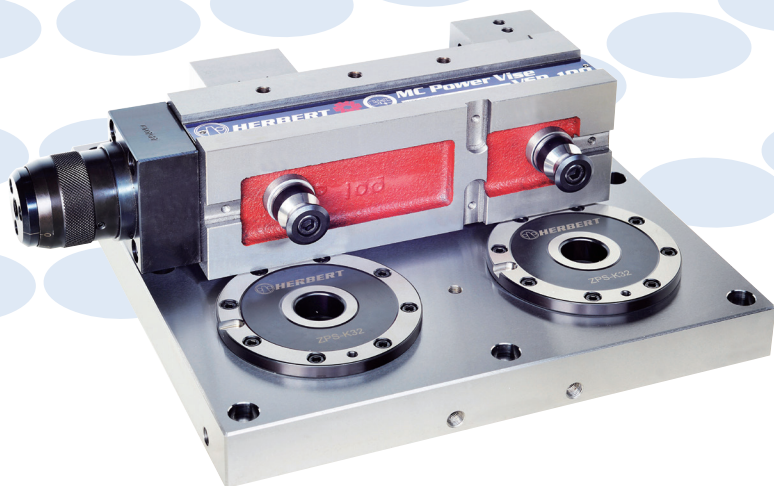
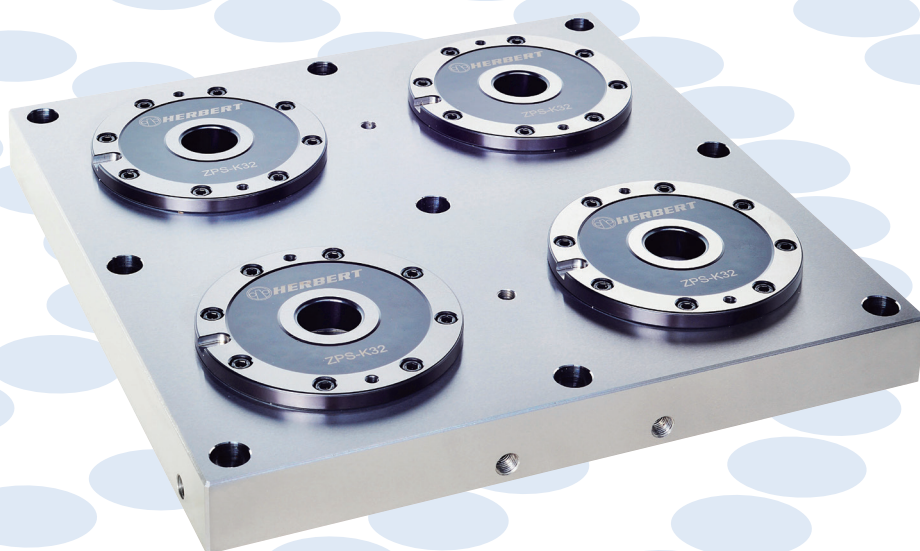
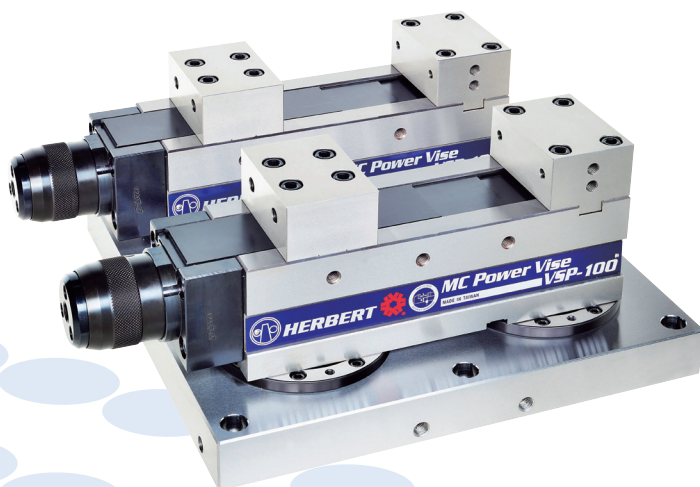
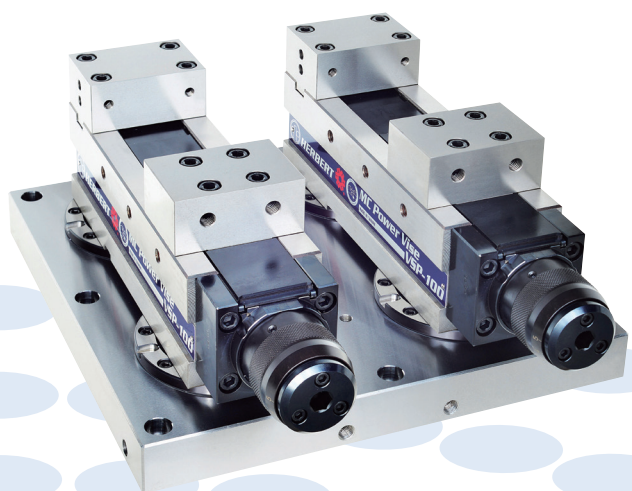
精度 Precision

快速 Quick



- ▶ 通過使用最新的品零點定位系統，您可以大大優化生產中工件的夾持和換裝，並縮短機台的交換時間，節約成本！
- ▶ Through the latest Zero-Point system, you can not only greatly optimize the production of clamping and changing, but also shorten the time of exchanging machine, or even save costs.

零點定位系統組裝模式 ZERO-POINT-SYSTEMS



特性：

零點定位系統技術為您帶來明顯的效益：

- ▶ 增加機台實際加工時間。
- ▶ 縮短工件或夾具的更換時間。
- ▶ 重複定位精度高。
- ▶ 單一的接觸界面可適用幾乎所有的機台。
- ▶ 定位和夾持同步實現。

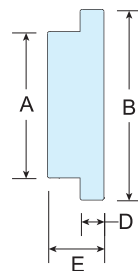
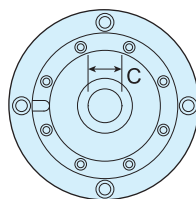
Features:

The benefits of this system can help you below.

- ▶ Increase the working time of the machine
- ▶ Shorten the time of exchanging fixture.
- ▶ High precision of repeating position.
- ▶ The Products suit for almost machines.
- ▶ Having both good positioning and clamping.

零點定位系統 ZERO-POINT-SYSTEMS

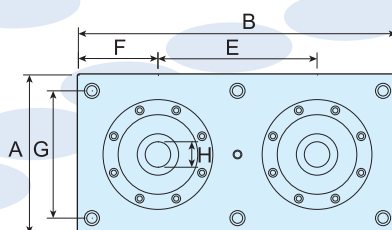
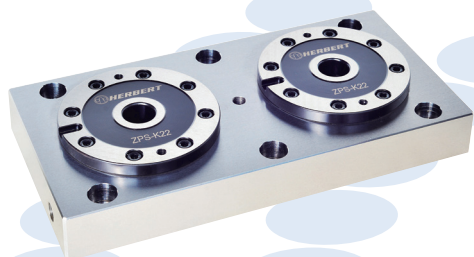
單孔式 1 HOLE PLATE



MODEL	A	B	C	D	E	夾緊力POWER	拉緊力POWER	N.W.
ZPS-K32-1-RH	138	180	32	22	53	20KN	55KN	8kg
ZPS-K22-1-RH	112	154	22	22	53	10KN	25KN	7kg
ZPS-K32-1-RL	138	180	32	22	53	20KN	55KN	8kg
ZPS-K22-1-RL	112	154	22	22	53	10KN	25KN	7kg

▶ RH液壓式Hydraulic ▶ RL氣壓式Pneumatic

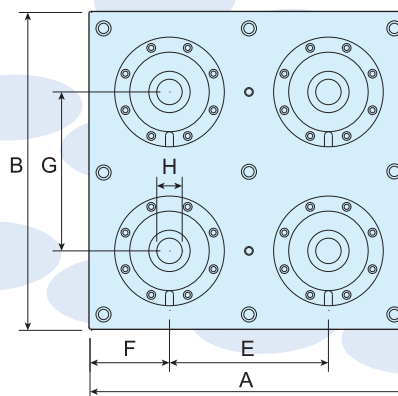
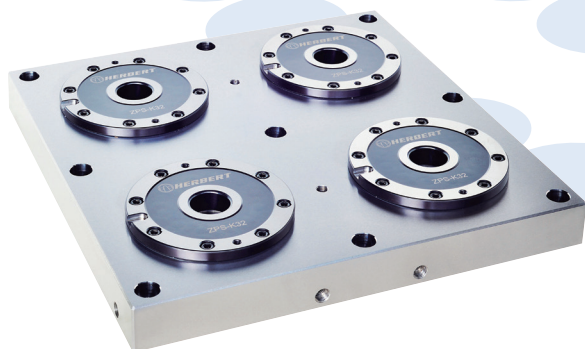
2孔式 2 HOLE PLATE



MODEL	A	B	C	D	E	F	G	H	夾緊力POWER	拉緊力POWER	N.W.
ZPS-K32-2-RH	196	396	53	43	200	98	160	32	20KN	55KN	22kg
ZPS-K22-2-RH	150	300	48	38	150	75	100	22	10KN	25KN	12kg
ZPS-K32-2-RL	196	396	53	43	200	98	160	32	20KN	55KN	22kg
ZPS-K22-2-RL	150	300	48	38	150	75	100	22	10KN	25KN	12kg

▶ RH液壓式Hydraulic ▶ RL氣壓式Pneumatic

4孔式 4 HOLE PLATE

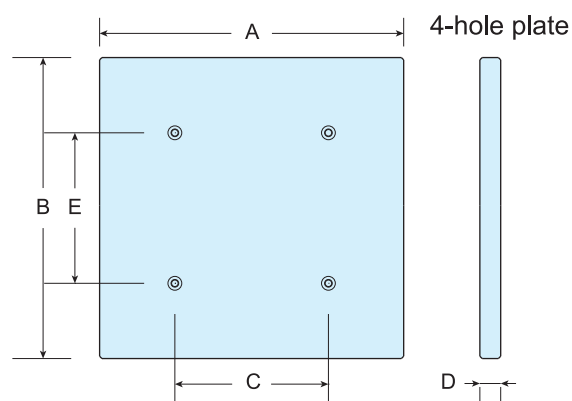
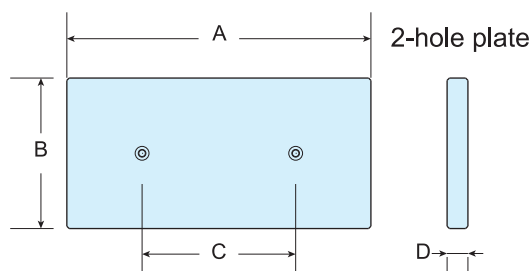
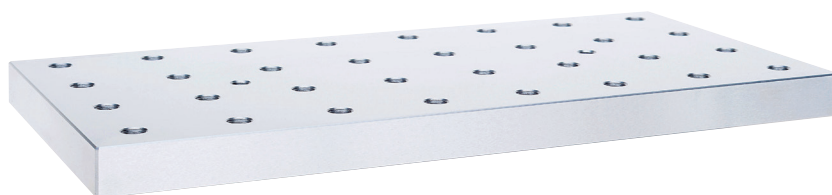


MODEL	A	B	C	D	E	F	G	H	夾緊力POWER	拉緊力POWER	N.W.
ZPS-K32-4-RH	396	396	53	43	200	98	200	32	20KN	55KN	53kg
ZPS-K22-4-RH	300	300	48	38	150	75	150	22	10KN	25KN	43kg
ZPS-K32-4-RL	396	396	53	43	200	98	200	32	20KN	55KN	53kg
ZPS-K22-4-RL	300	300	48	38	150	75	150	22	10KN	25KN	43kg

▶ RH液壓式Hydraulic ▶ RL氣壓式Pneumatic

零點定位系統 ZERO-POINT-PLATE

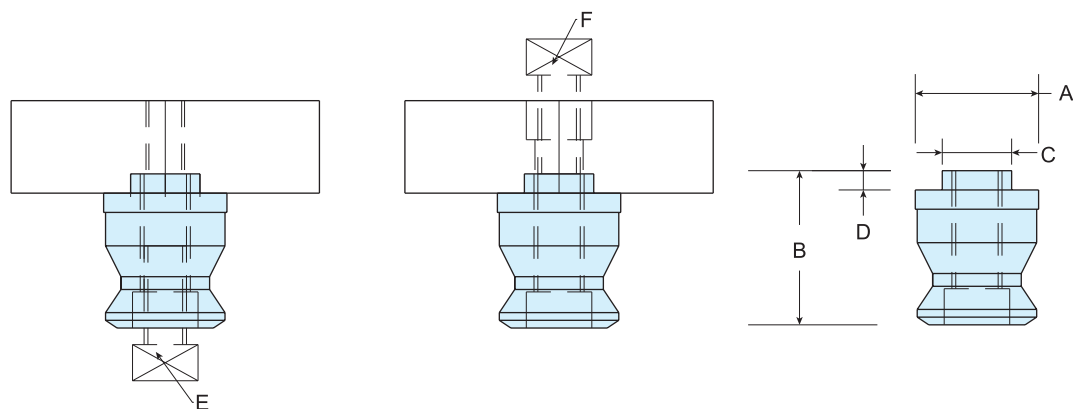
拖盤 CHUCK



MODEL	A	B	C	D	N.W.
ZPS-K32-2-P	196	396	200	24	14kg
ZPS-K22-2-P	150	300	150	20	11kg

MODEL	A	B	C	D	E	N.W.
ZPS-K32-4-P	396	396	200	25	200	30kg
ZPS-K22-4-P	396	396	200	25	200	30kg

拉栓 PULL BOLT



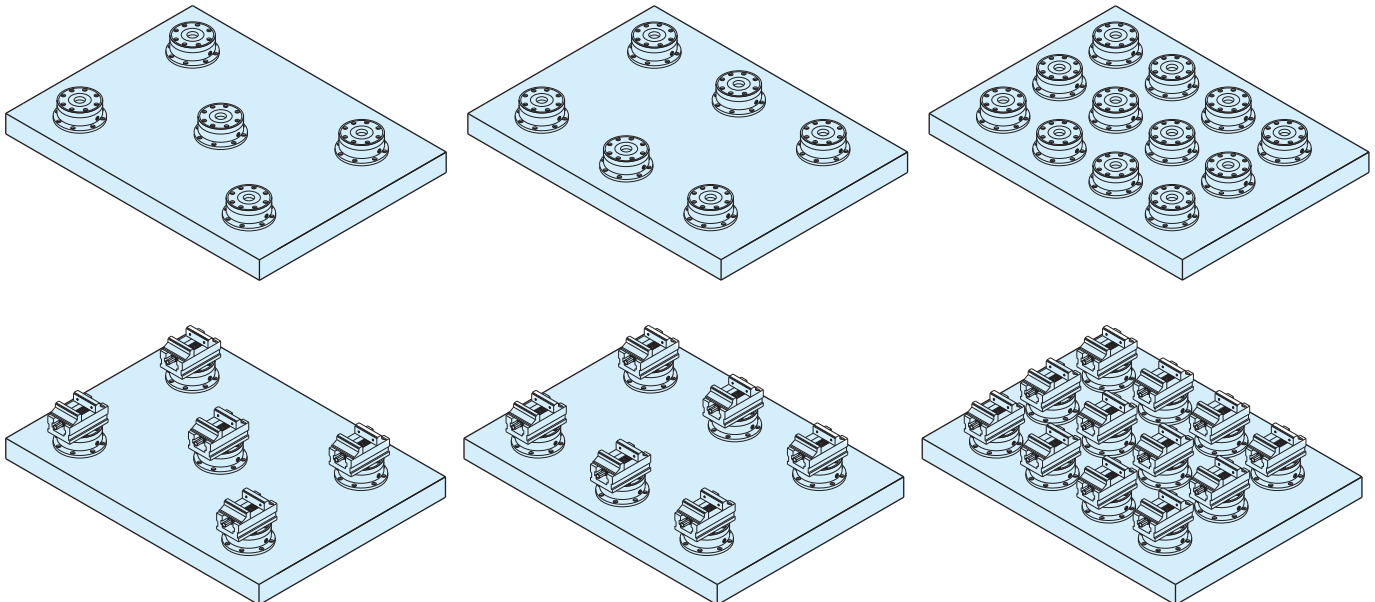
MODEL	A	B	C	D	E	F
ZPS-K32-A	32	40	18	5	M10	M12
ZPS-K22-A	32	31	14	5	M6	M8

外置安裝式零點定位裝置模式

EXTERNAL INSTALLATION OF ZERO-POINT SYSTEM



- ▶ 外置安裝式零點定位裝置可以安裝在機床工作台、零點定位托架、夾具基準板等處。
- ▶ 常在銑削、磨削、腐蝕加工或者射出成形機上被用來快速裝夾工件或者夾具，零點定位裝置可以被安裝在任何位置，甚至是立式或頂式安裝。
- ▶ The External installation of Zero-point system can set up on machine table, zero-point bracket, and fixture board.
- ▶ It usually uses for fixtures on milling, grinding, corrosion processing or injection molding machine. It can also set up on every single place, even on vertical or top-mounted device.

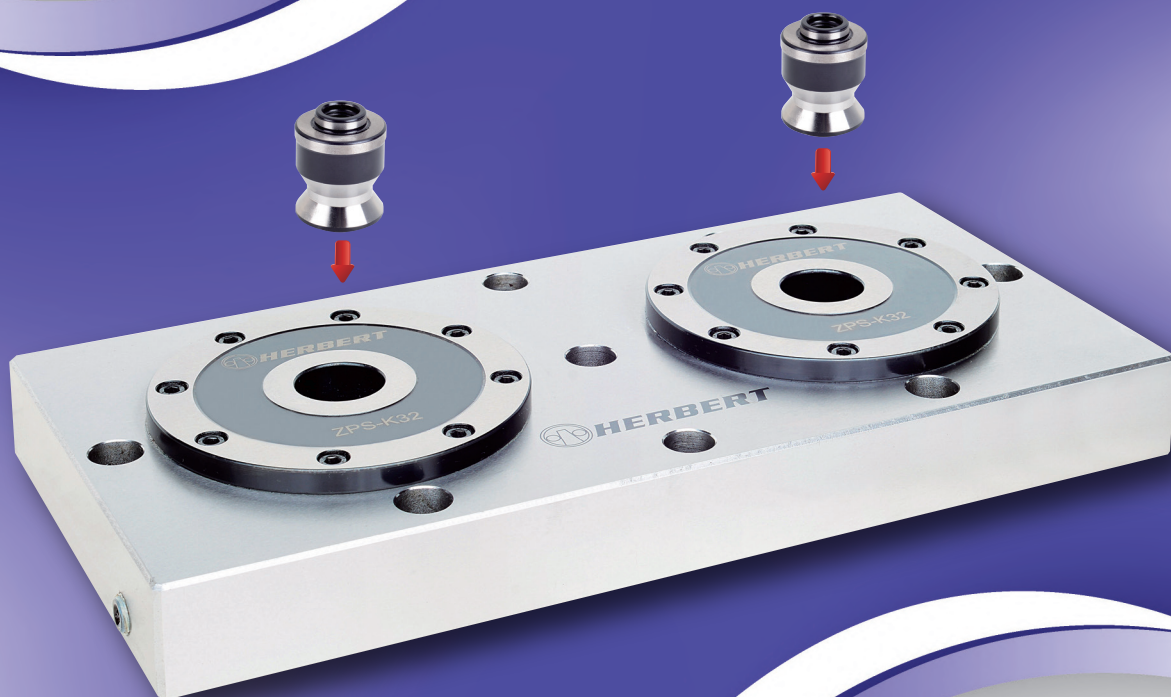


HERBERT

豪伯特企業有限公司
HERBERT ENTERPRISE CO., LTD.



TAIWAN EXCELLENCE



專利產品 請勿仿冒

專利字號 PATENT **M627410**

零點定位系統
ZERO-POINT-SYSTEMS