





Gpm *The new
Revolution*

刀座型錄
Tool Holder



修訂 2024/08/20

We reserve the right to make technical modifications and project design changes without prior notice.



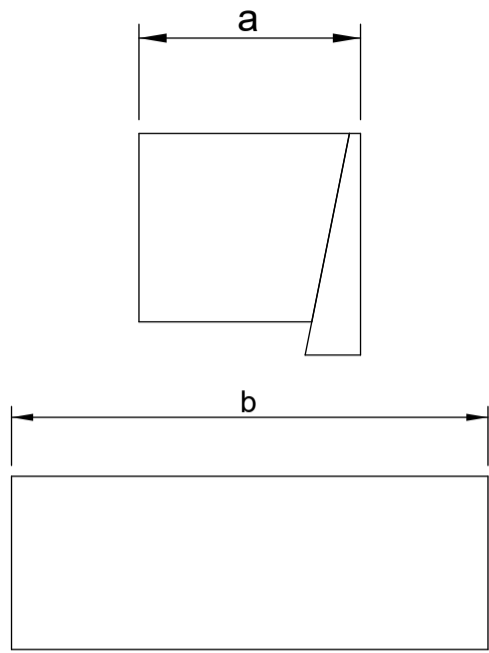
*The new
Revolution*



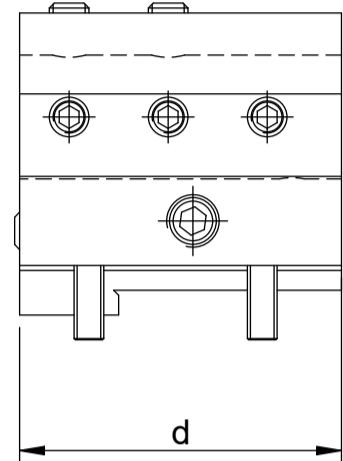
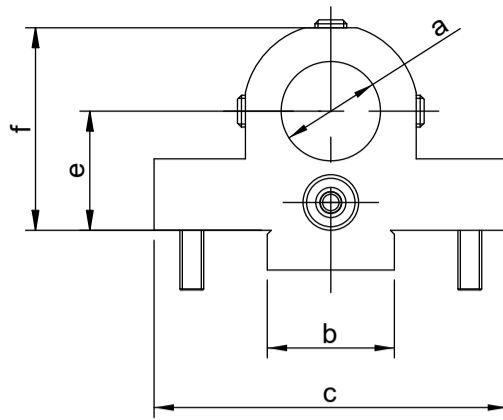
Contents

槽型刀盤固定刀座 - - -	02
Static Tool holder	
VDI 刀座 - - - - -	04
VDI Tool holder	
BMT 刀座 - - - - -	07
BMT Tool holder	
特殊刀座 - - - - -	11
Special Tool holder	

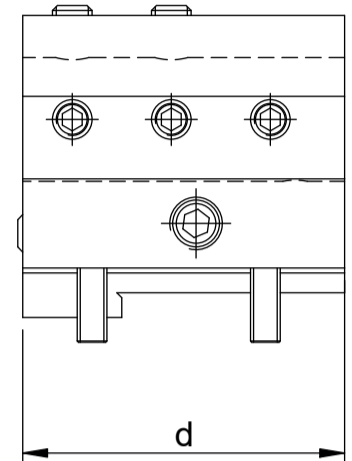
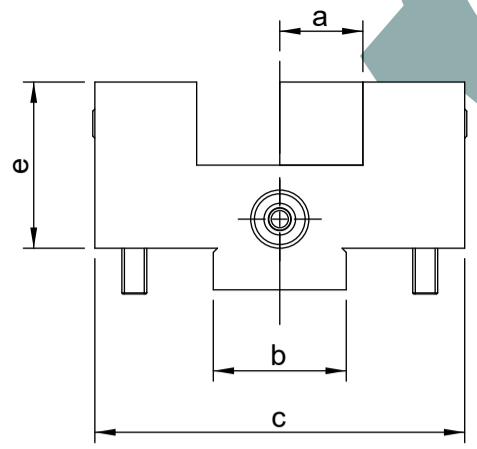




外徑刀上下壓板
clamping element

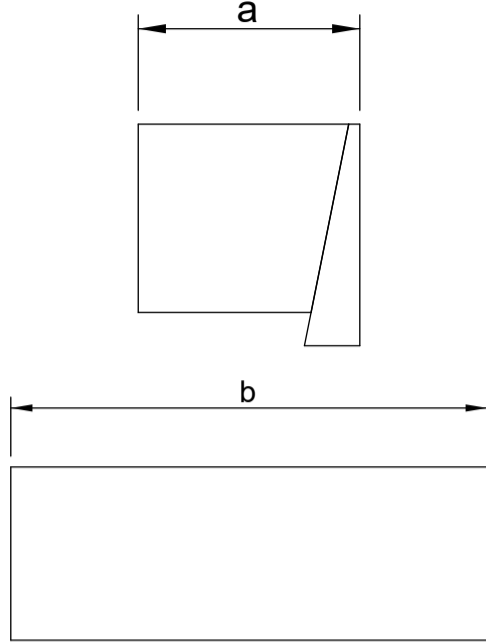


搪孔刀座
Boring bar tool holder

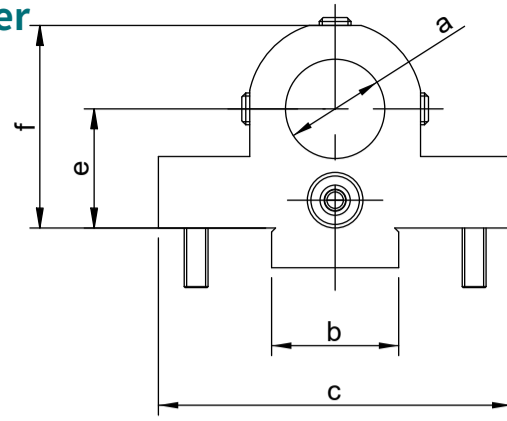


端面刀座
Facing tool holder

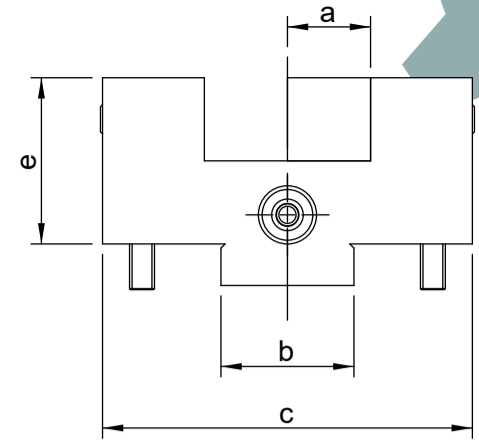
刀盤規格 Specs of tool disc	刀座品號 Part ID of tool holder	品名 Description of Goods	尺寸 (mm) dimensions					
			a	b	c	d	e	f
標準刀盤組/公制/Tool disc 440.212/SW220/8T/W3/25BAR/T65	508102005	搪孔刀座組/H25.065.089.02/外出水 Boring bar tool holder/coolant supply external	25	32	89	65	30	51
	508102028	搪孔刀座組/H25.065.089.02/中心出水 Boring bar tool holder/coolant supply internal	25	32	89	65	30	51
	508101017	端面刀座組/F20.065.089.02/外出水 Facing tool holder/coolant supply external	20	32	89	65	40	-
	41103001-01	上壓板/公制/P055.020.00 clamping element (upper)	20	55	-	-	-	-
	41103002-01	下壓板/公制/P055.020.01 clamping element (lower)						
標準刀盤組/公制/Tool disc 40.212/SW220/8T/W9/25BAR/T65	508102005	搪孔刀座組/H25.065.089.02/外出水 Boring bar tool holder/coolant supply external	25	32	89	65	30	51
	508102028	搪孔刀座組/H25.065.089.02/中心出水 Boring bar tool holder/coolant supply internal	25	32	89	65	30	51
	508101017	端面刀座組/F20.065.089.02/外出水 Facing tool holder/coolant supply external	20	32	89	65	40	-
	41103001-01	上壓板/公制/P055.020.00 clamping element (upper)	20	55	-	-	-	-
	41103002-01	下壓板/公制/P055.020.01 clamping element (lower)						
標準刀盤組/公制/Tool disc 440.216/SW270/8T/W3/25BAR/T85	508101018	端面刀座組/F25.085.100.3/外出水 Facing tool holder/coolant supply external	25	30	100	85	55	-
	508102038	搪孔刀座組/H32.085.100.3/外出水 Boring bar tool holder/coolant supply external	32	30	100	85	40	75
	508102037	搪孔刀座組/H32.085.100.3/中心出水 Boring bar tool holder/coolant supply internal	32	30	100	85	40	75
	508102026	搪孔刀座組/H40.085.100.3/外出水 Boring bar tool holder/coolant supply external	40	30	100	85	40	75
	508102010	搪孔刀座組/H40.085.100.3/中心出水 Boring bar tool holder/coolant supply internal	40	30	100	85	40	75
	41103010-01	上壓板/公英制共用/P070.025.00 clamping element (upper)	25	70	-	-	-	-
	41103011-01	下壓板/公制/P070.025.01 clamping element (lower)						
標準刀盤組/公制/Tool disc 440.216/SW316/12T/W9/25BAR/T80	508102009	搪孔刀座組/H40.080.084.3/外出水 Boring bar tool holder/coolant supply external)	40	30	84	80	35	70
	508102076	搪孔刀座組/H40.080.084.3/中心出水 Boring bar tool holder/coolant supply internal	40	30	84	80	35	70
	508102030	搪孔刀座/H32.080.084.3/外出水 Boring bar tool holder/coolant supply external	32	30	84	80	30	56
	508102031	搪孔刀座/H32.080.084.3/中心出水 Boring bar tool holder/coolant supply internal	32	30	84	80	30	56
	508102014	搪孔刀座組/H25.080.084.3/外出水 Boring bar tool holder/coolant supply external	25	30	84	80	30	56
	508102024	搪孔刀座組/H25.080.084.3/中心出水 Boring bar tool holder/coolant supply internal	25	30	84	80	30	56
	508101023	端面刀座組/F20.080.084.3/50BAR Facing tool holder	20	30	84	80	45	-
	41103005-01	上壓板/公制/P060.020.00 Clamping element (upper)	20	60	-	-	-	-
	41103009-01	下壓板/公英制共用/P060.020.01 Clamping element (lower)						



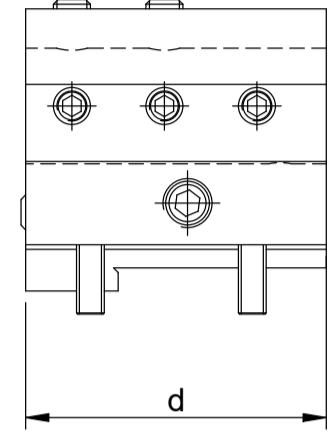
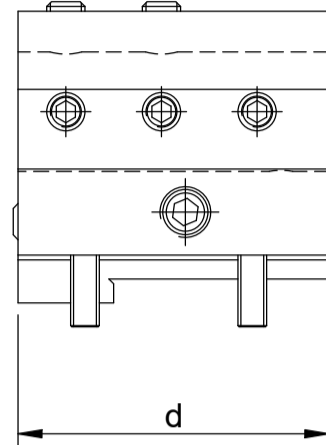
外徑刀上下壓板
clamping element



搪孔刀座
Boring bar tool holder



端面刀座
Facing tool holder



刀盤規格 Specs of tool disc	刀座品號 Part ID of tool holder	品名 Description of Goods	尺寸 (mm) dimensions					
			a	b	c	d	e	f
標準刀盤組/公制/Tool disc 440.216/SW330/8T/W3/25BAR/T85	508102010	搪孔刀座組/H40.085.100.3/中心出水 Boring bar tool holder/coolant supply internal	40	30	100	85	40	75
	508102026	搪孔刀座組/H40.085.100.3/外出水 Boring bar tool holder/coolant supply external	40	30	100	85	40	75
	508102037	搪孔刀座組/H32.085.100.3/中心出水 Boring bar tool holder/coolant supply internal	32	30	100	85	40	75
	508102038	搪孔刀座組/H32.085.100.3/外出水 Boring bar tool holder/coolant supply external	32	30	100	85	40	75
	508101018	端面刀座組/F25.085.100.3/外出水 Facing tool holder/coolant supply external	25	30	100	85	55	-
	41103010-01	上壓板/公英制共用/P070.025.00 clamping unit (upper)	25	70	-	-	-	-
	41103011-01	下壓板/公制/P070.025.01 clamping unit (lower)						
標準刀盤組/公制 /440.220/SW380/12T/W3/25BAR/T85	508102010	搪孔刀座組/H40.085.100.3/中心出水 Boring bar tool holder/coolant supply internal	40	30	100	85	40	75
	508102026	搪孔刀座組/H40.085.100.3/外出水 Boring bar tool holder/coolant supply external	40	30	100	85	40	75
	508101018	端面刀座組/F25.085.100.3/外出水 Facing tool holder/coolant supply external	25	30	100	85	55	-
	41103010-01	上壓板/公英制共用/P070.025.00 clamping element (upper)	25	70	-	-	-	-
	41103011-01	下壓板/公制/P070.025.01 clamping element (lower)						
標準刀盤組/公制/Tool disc 440.220/SW410/12T/W3/25BAR/T85	508102010	搪孔刀座組/H40.085.100.3/中心出水 Boring bar tool holder/coolant supply internal	40	30	100	85	40	75
	508102026	搪孔刀座組/H40.085.100.3/外出水 Boring bar tool holder/coolant supply external	40	30	100	85	40	75
	508101018	端面刀座組/F25.085.100.3/外出水 Facing tool holder/coolant supply external	25	30	100	85	55	-
	41103010-01	上壓板/公英制共用/P070.025.00 clamping element (upper)	25	70	-	-	-	-
	41103011-01	下壓板/公制/P070.025.01 clamping element (lower)						
標準刀盤組/公制/Tool disc 440.225/SW420/12T/W3/25BAR/T85	508102060	搪孔刀座組/H40.085.100.5/外出水 Boring bar tool holder/coolant supply external	40	30	100	85	35	65
	508102062	搪孔刀座組/H40.085.100.5/中心出水 Boring bar tool holder/coolant supply internal	40	30	100	85	35	65
	508101024	端面刀座組/F25.085.100.5/雙外出水 Facing tool holder/coolant supply external	25	30	100	85	55	-
	41103034	上壓板/公制/P090.025.00 clamping element (upper)	25	90	-	-	-	-
	41103014-01	下壓板/公制/P090.025.01 Clamping element (lower)						
標準刀盤組/公制/Tool disc 440.232/SW520/12T/W3/25BAR/T108	508102003	搪孔刀座組/H50.118.118.3/中心出水 Boring bar tool holder/coolant supply internal	50	21.9	118	118	40	84
	508102029	搪孔刀座組/H50.118.118.01/外出水 Boring bar tool holder/coolant supply external	50	21.9	118	118	40	84
	508101015	端面刀座組/F32.113.118.3/外出水 Facing tool holder/coolant supply external	32	21.9	118	113	60	-
	41103015-01	上壓板/公制/P110.032.00 Clamping element (upper)	32	110	-	-	-	-
	41103016-01	下壓板/公制/P110.032.01 Clamping element (lower)						

固定刀座

Static Tool holder

外徑刀座

Turning Tool holder



VDI	Shank	Specs
VDI25	16	B1-25X16
VDI30	20	B1-30X20
VDI40	25	B1-40X25
VDI50	32	B1-50X32
VDI60	32	B1-60X32

VDI	Shank	Specs
VDI25	16	B3-25X16
VDI30	20	B3-30X20
VDI40	25	B3-40X25
VDI50	32	B3-50X32
VDI60	32	B3-60X32

VDI	Shank	Specs
VDI25	16	B2-25X16
VDI30	20	B2-30X20
VDI40	25	B2-40X25
VDI50	32	B2-50X32
VDI60	32	B2-60X32

VDI	Shank	Specs
VDI25	16	B4-25X16
VDI30	20	B4-30X20
VDI40	25	B4-40X25
VDI50	32	B4-50X32
VDI60	32	B4-60X32

端面 / 外徑刀座

Facing / Turning Tool holder



VDI	Shank	Specs
VDI25	16	C1-25X16
VDI30	20	C1-30X20
VDI40	25	C1-40X25
VDI50	32	C1-50X32
VDI60	32	C1-60X32

VDI	Shank	Specs
VDI25	16	C3-25X16
VDI30	20	C3-30X20
VDI40	25	C3-40X25
VDI50	32	C3-50X32
VDI60	32	C3-60X32

VDI	Shank	Specs
VDI25	16	C2-25X16
VDI30	20	C2-30X20
VDI40	25	C2-40X25
VDI50	32	C2-50X32
VDI60	32	C2-60X32

VDI	Shank	Specs
VDI25	16	C4-25X16
VDI30	20	C4-30X20
VDI40	25	C4-40X25
VDI50	32	C4-50X32
VDI60	32	C4-60X32

內孔刀座

Boring bar Tool holder



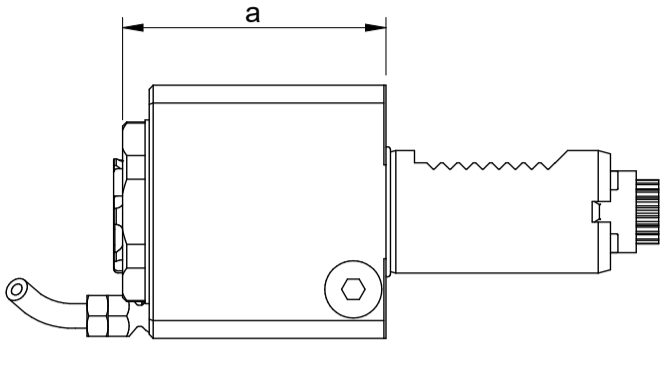
VDI	孔徑 Ø(mm)	Specs	
		coolant supply (external)	coolant supply (internal)
VDI25	25	E2-25X25	E1-25X25
VDI30	32	E2-30X32	E1-30X32
VDI40	40	E2-40X40	E1-40X40
VDI50	50	E2-50X50	E1-50X50
VDI60	60	E2-60X50	E1-60X50

VDI	孔徑 Ø(mm)	NH(mm)	Specs coolant supply(internal)
VDI30	32	85	T1-3032-85L
VDI30	32	100	T1-3032-100L
VDI40	40	100	T1-4040-100L
VDI50	50	100	T1-5050-100L

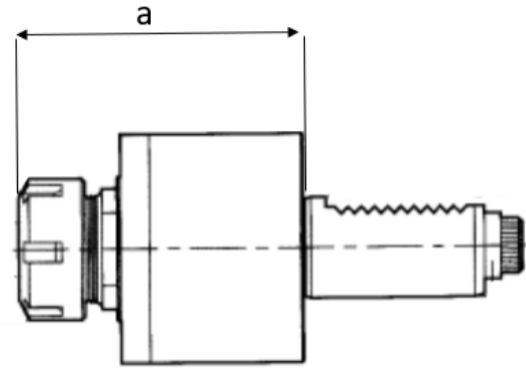
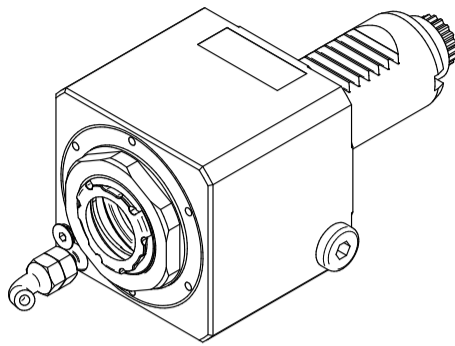
動力刀座

Driven Tool holder

0° 動力刀座 Straight driven Tool holder



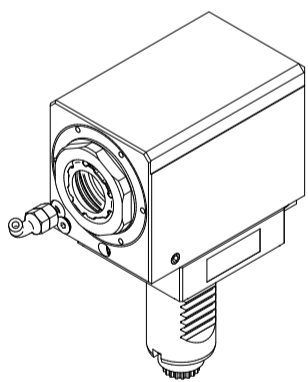
內牙款式 - Internal Nut type



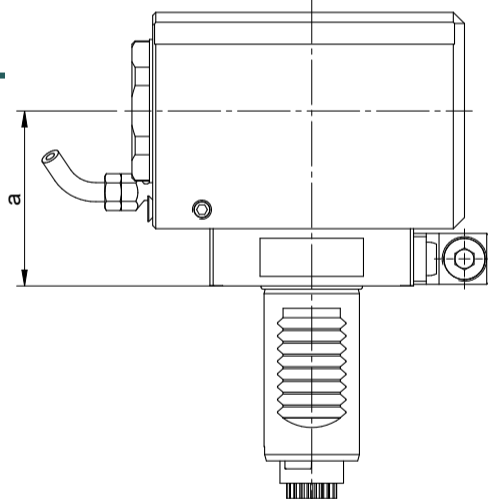
外牙款式 - External Nut type

Type	ER	a NL(mm)	coolant supply	speed (rpm)	gear ratio i=n1:n2	Nut type	Specs
VDI25	20	60	ext. 5~80BAR	8000	1	內牙 int.Nut	VDI25-5480-20
VDI30	25	64.5	ext. 5~80BAR	6000	1	內牙 int.Nut	VDI30-5480-25
	25	101	ext. 5~80BAR	6000	1	外牙 ext.Nut	VDI30-5480-25
VDI40	32	95	ext. 5~80BAR	6000	1	內牙 int.Nut	VDI40-5480-32
	32	109	ext. 5~80BAR	6000	1	外牙 ext.Nut	VDI40-5480-32
VDI50	40	122	ext. 5~80BAR	6000	1	外牙 ext.Nut	VDI50-5480-40
VDI60	50	142	ext. 5~80BAR	6000	1	外牙 ext.Nut	VDI60-5480-50

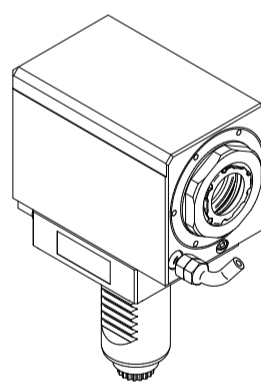
90° 動力刀座 90° driven Tool holder



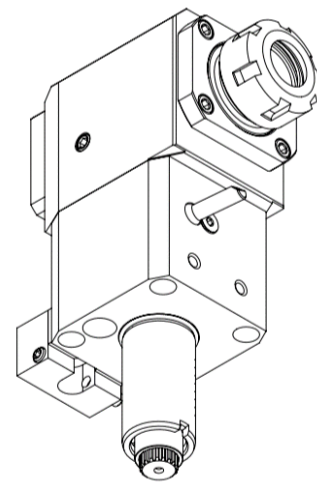
右手-Right



內牙款式 - Internal Nut type



左手-Left



外牙款式 - External Nut type

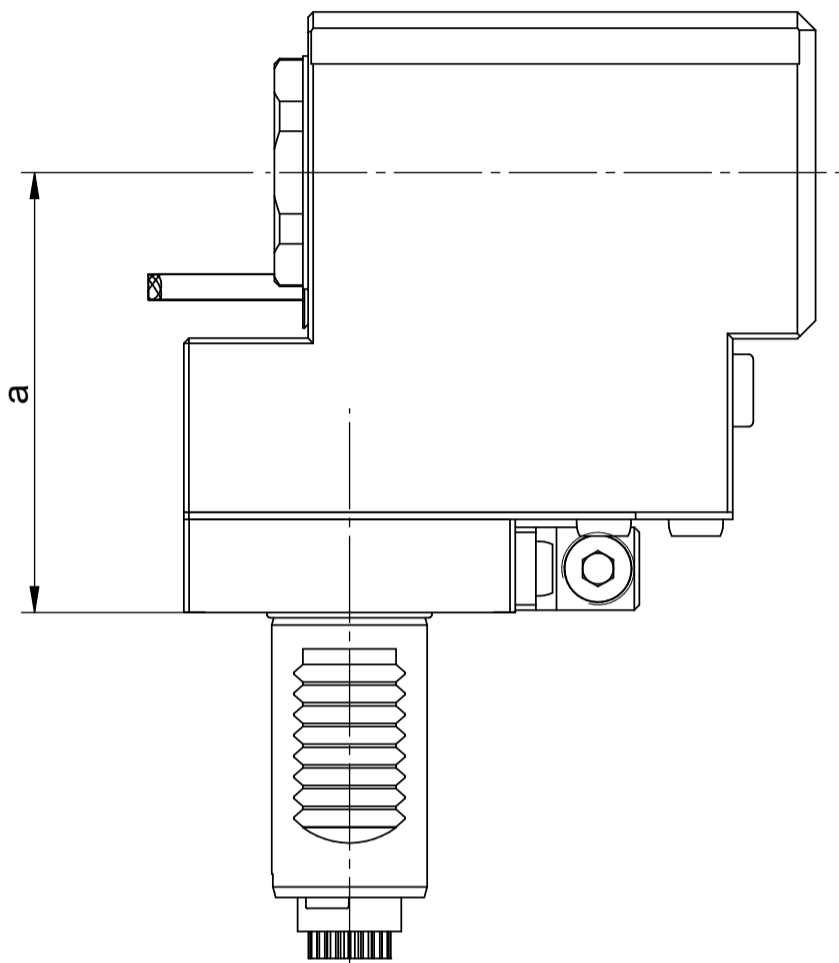
Type	ER	a NH(mm)	coolant supply	speed (rpm)	gear ratio i=n1:n2	Nut type	Specs
VDI30	25	55	ext. 5~80BAR	7000	1	內牙/外牙 int/ext.Nut	VDI30-5480-25-55-R
		85				外牙 ext.Nut	VDI30-5480-25-85-R VDI30-5480-25-85-L
VDI40	32	100	ext. 5~80BAR	6000	1	內牙/外牙 int/ext.Nut	VD40-5480-32-100-R
						內牙/外牙 int/ext.Nut	VD40-5480-32-100-L
VDI50	40	75	ext. 5~80BAR	5000	1	外牙 ext.Nut	VD40-5480-32-75-R
						外牙 ext.Nut	VD40-5480-32-75-L
VDI60	50	106	ext. 5~80BAR	5000	1	外牙 ext.Nut	VD60-5480-32-106-R
						外牙 ext.Nut	VD60-5480-32-106-L

※ 另有中心出水(選配) ; 請洽營業單位

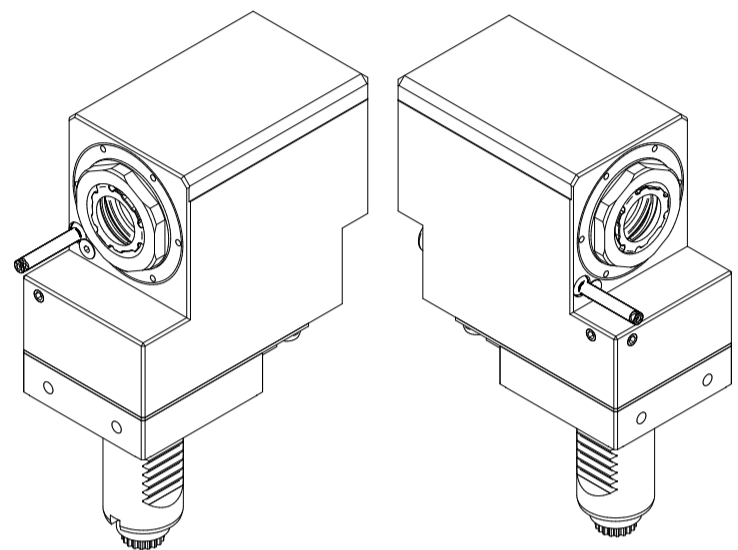
※ Optional : coolant supply internal GPM | 05

後縮動力刀座

Off-set Driven Tool holder

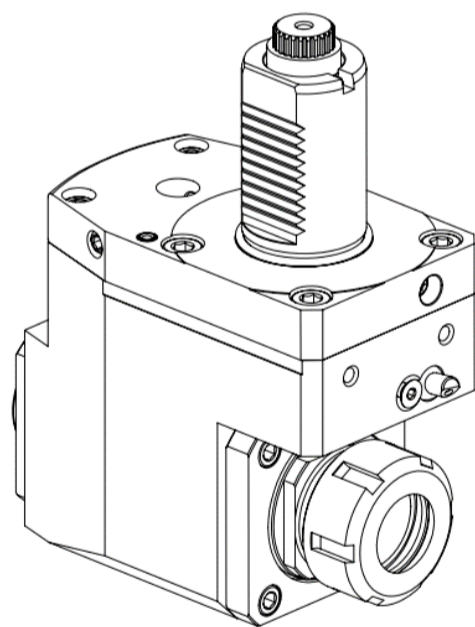


內牙款式 - Internal Nut type



右手-Right

左手-Left



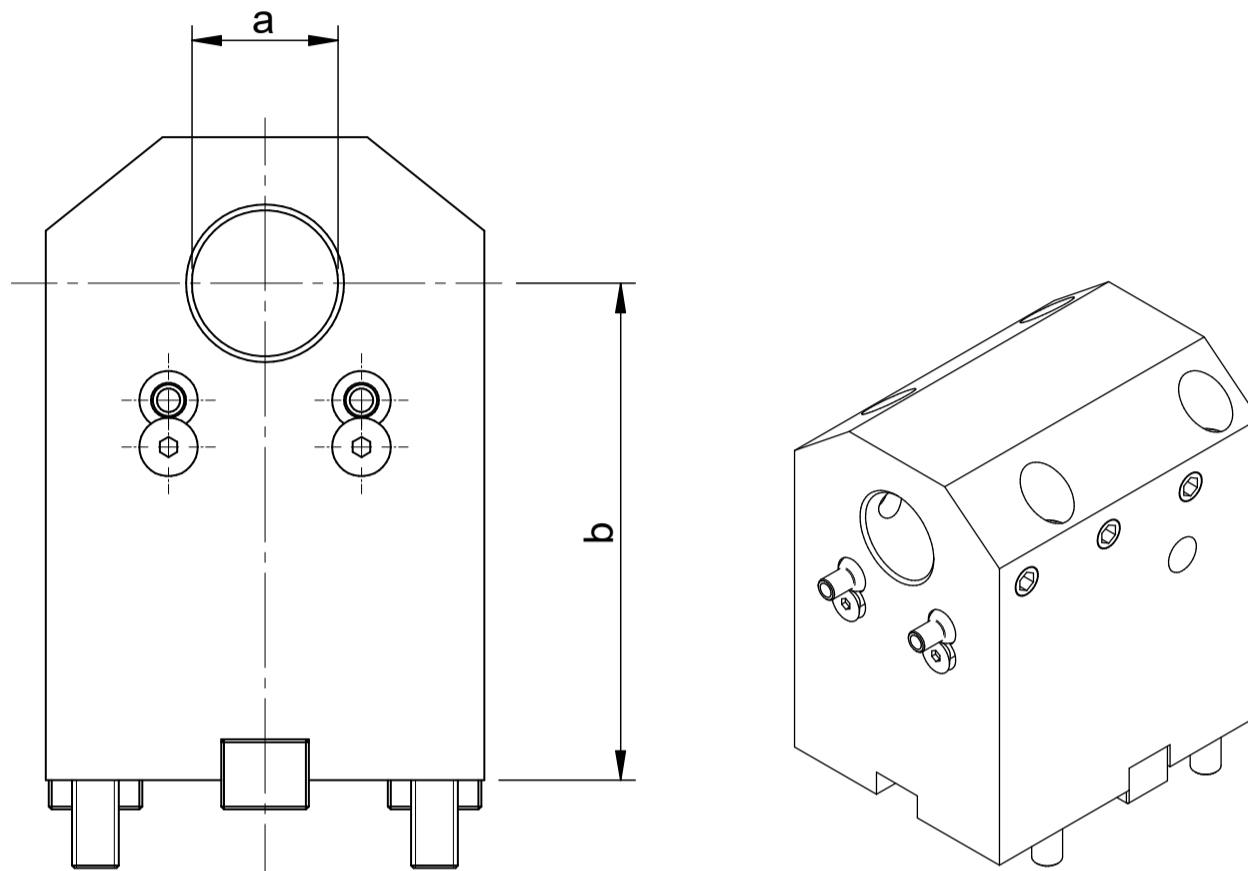
外牙款式 - External Nut type

Type	ER	a NH(mm)	coolant supply	speed (rpm)	gear ratio i=n1:n2	Nut type	Specs
VDI25	20	75	ext. 5~80BAR	8000	1	內牙 int.Nut	VDI25-offset-5480-20-75-R
VDI30	25	85	ext. 5~80BAR	7000	1	內牙/外牙 int/ext.Nut	VDI30-offset-5480-25-85-R
						內牙/外牙 int/ext.Nut	VDI30-offset-5480-25-85-L
VDI40	32	100	ext. 5~80BAR	6000	1	內牙/外牙 int/ext.Nut	VDI40-offset-5480-32-100-R
						內牙/外牙 int/ext.Nut	VDI40-offset-5480-32-100-L
VDI50	40	90	ext. 5~80BAR	5000	1	外牙 ext.Nut	VDI50-offset-5480-32-90-R
						外牙 ext.Nut	VDI50-offset-5480-32-90-L

固定刀座

Static Tool holder

搪孔刀座
Boring bar Tool holder



Type	Specifications	a Ø(mm)	b NH(mm)
BMT45	搪孔刀座組 Boring bar tool holder /BMT45/B32-65	32	65
	搪孔刀座組 Boring bar tool holder /BMT45/B40-65	40	65
	搪孔刀座組 Boring bar tool holder /BMT45/B25-85	25	85
BMT55	搪孔刀座組 Boring bar tool holder /BMT55/B32-60	32	60
	搪孔刀座組 Boring bar tool holder /BMT55/B32-85	32	85
	搪孔刀座組 Boring bar tool holder /BMT55/B40-60	40	60
	搪孔刀座組 Boring bar tool holder /BMT55/B40-70	40	70
	搪孔刀座組 Boring bar tool holder /BMT55/B40-85	40	85
BMT65	搪孔刀座組 Boring bar tool holder /BMT65/B40-72	40	72
	搪孔刀座組 Boring bar tool holder /BMT65/B40-100	40	100
	搪孔刀座組 Boring bar tool holder /BMT65/B50-100	50	100
BMT75	搪孔刀座組 Boring bar tool holder /BMT75/B50-60	50	60
	搪孔刀座組 Boring bar tool holder /BMT75/B50-90	50	90
	搪孔刀座組 Boring bar tool holder /BMT75/B50-100	50	100
	搪孔刀座組 Boring bar tool holder /BMT75/B50-110	50	110
	搪孔刀座組 Boring bar tool holder /BMT75/B60-90	60	90
	搪孔刀座組 Boring bar tool holder /BMT75/B80-120	80	120
BMT85	搪孔刀座組 Boring bar tool holder /BMT85/B100-110	100	110

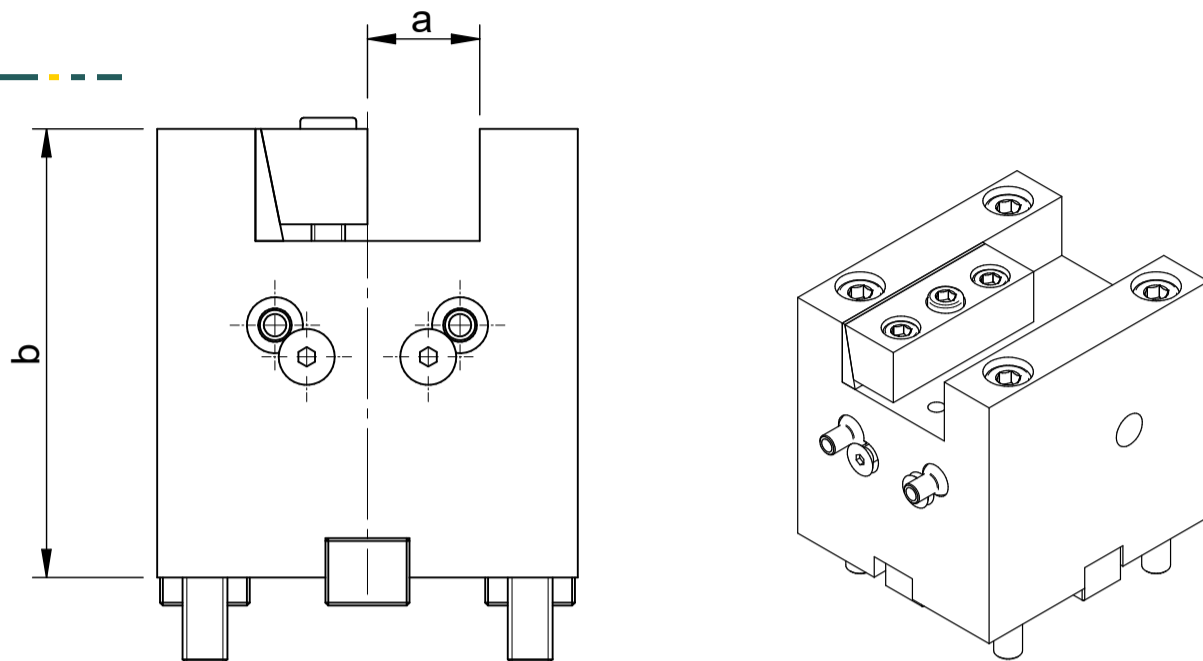
※ 上述皆為標配：中心出水

※ The above are standard : coolant supply internal

固定刀座

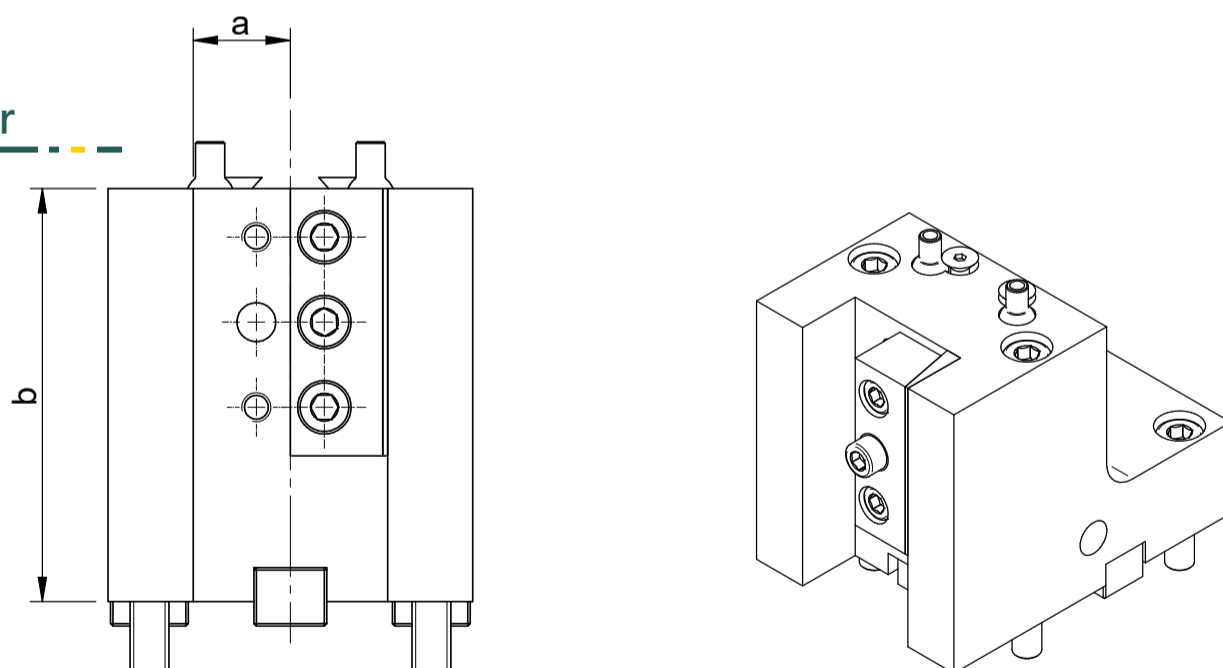
Static Tool holder

端面刀座 Facing Tool holder



Type	Specifications	a Shank(mm)	b Height(mm)
BMT45	端面刀座組Facing Tool holder /BMT45/F20-80	25	80
BMT55	端面刀座組Facing Tool holder /BMT55/F25-60	25	60
	端面刀座組Facing Tool holder /BMT55/F25-110	25	110
BMT65	端面刀座組Facing Tool holder /BMT65/F25-82.5	25	82.5
	端面刀座組Facing Tool holder /BMT65/F25-120	25	120
	端面刀座組Facing Tool holder /BMT75/F25-122	25	122
BMT75	端面刀座組Facing Tool holder /BMT75/F32-122	32	122
	端面刀座組Facing Tool holder /BMT75/F32-90	32	90
BMT85	端面刀座組Facing Tool holder /BMT85/F40-110	40	110

外徑刀座 Turning Tool holder

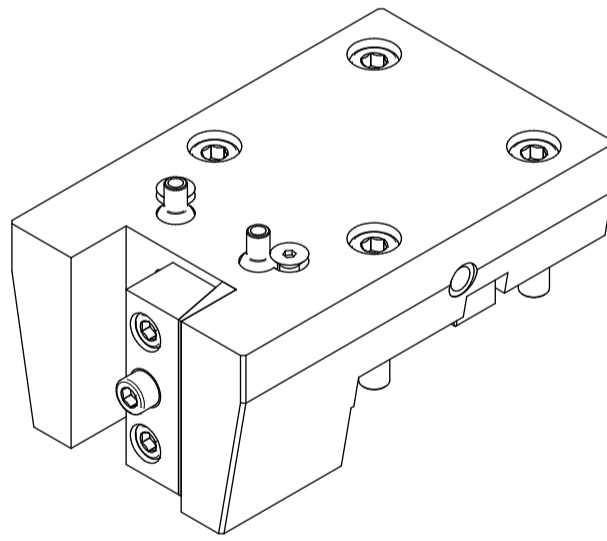
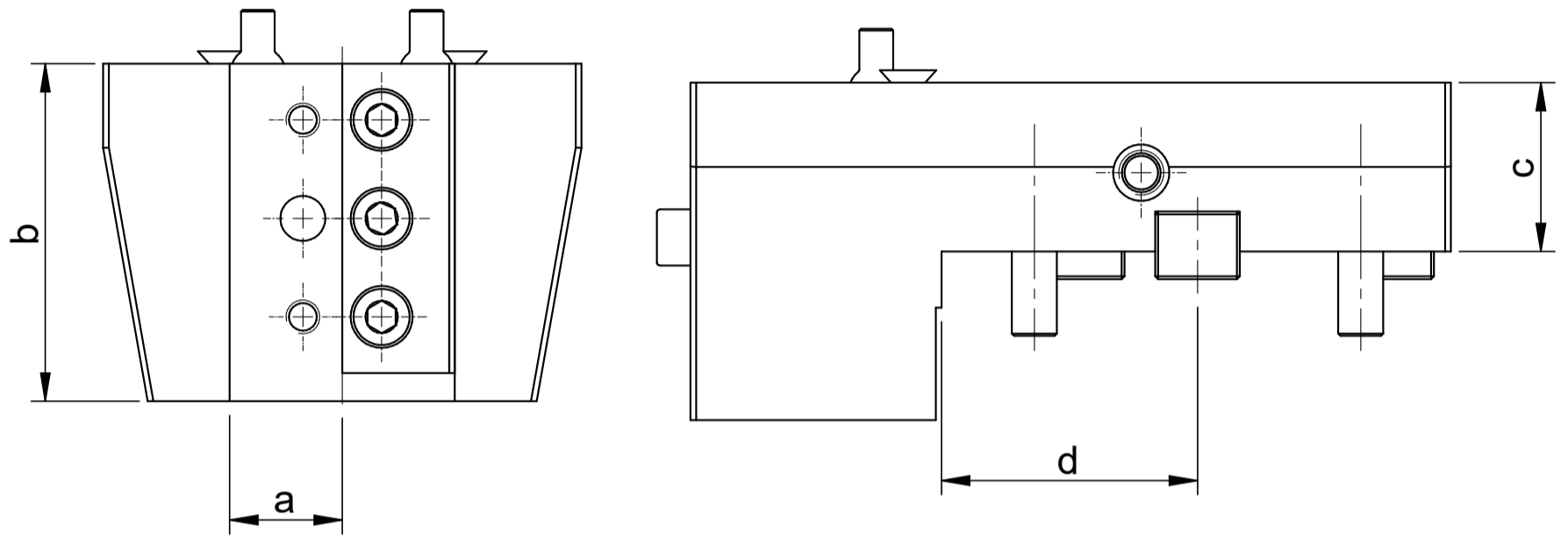


Type	Specifications	a Shank(mm)	b Height(mm)
BMT45	外徑刀座組Turning Tool holder /BMT45/C20-60	20	60
	外徑刀座組Turning Tool holder /BMT45/C20-85	20	85
	外徑刀座組Turning Tool holder /BMT45/C25-40	25	40
BMT55	外徑刀座組Turning Tool holder /BMT55/C20-80	20	80
	外徑刀座組Turning Tool holder /BMT55/C25-60	25	60
	外徑刀座組Turning Tool holder /BMT55/C25-80	25	80
BMT65	外徑刀座組Turning Tool holder /BMT65/C25-75	25	75
BMT75	外徑刀座組Turning Tool holder /BMT75/C25-100	25	100
	外徑刀座組Turning Tool holder /BMT75/C32-100	32	100
BMT85	外徑刀座組Turning Tool holder /BMT85/C40-90	40	90

固定刀座

Static Tool holder

外徑刀座
Turning Tool holder

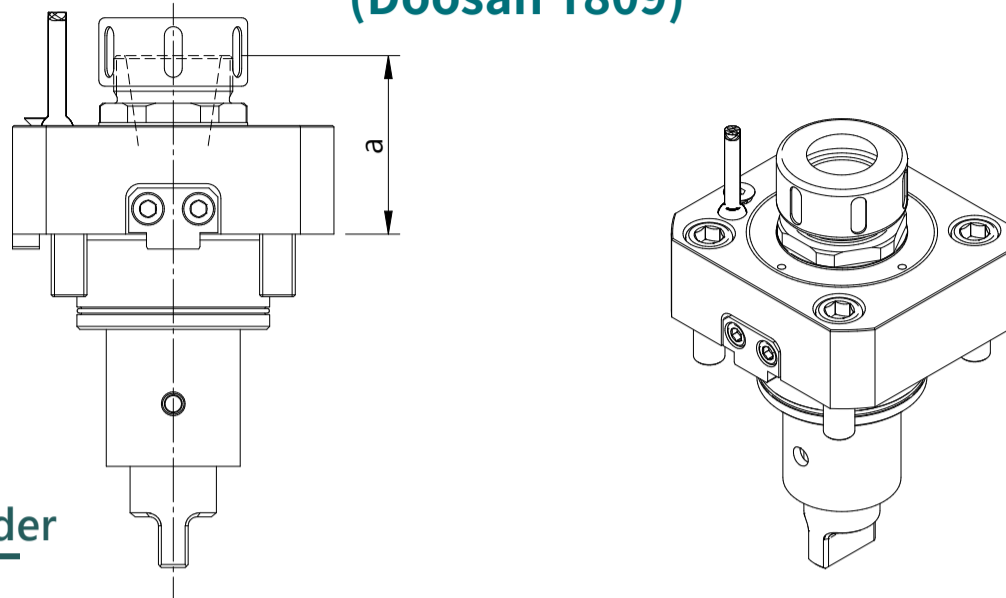


Type	Specifications	a Shank(mm)	b Height(mm)	c Height(mm)	d Length(mm)
BMT45	外徑刀座組Turning Tool holder/BMT45/C20-30	20	60	30	45
BMT55	外徑刀座組Turning Tool holder/BMT55/C20-30	20	80	30	50.2
	外徑刀座組Turning Tool holder/BMT55/C25-30	25	80	30	50.2
BMT65	外徑刀座組Turning Tool holder/BMT65/C25-30	25	72	30	55.5
BMT75	外徑刀座組Turning Tool holder/BMT75/C32-40	32	90	40	56
	外徑刀座組Turning Tool holder/BMT75/C32-70	32	115	70	56.5

動力刀座

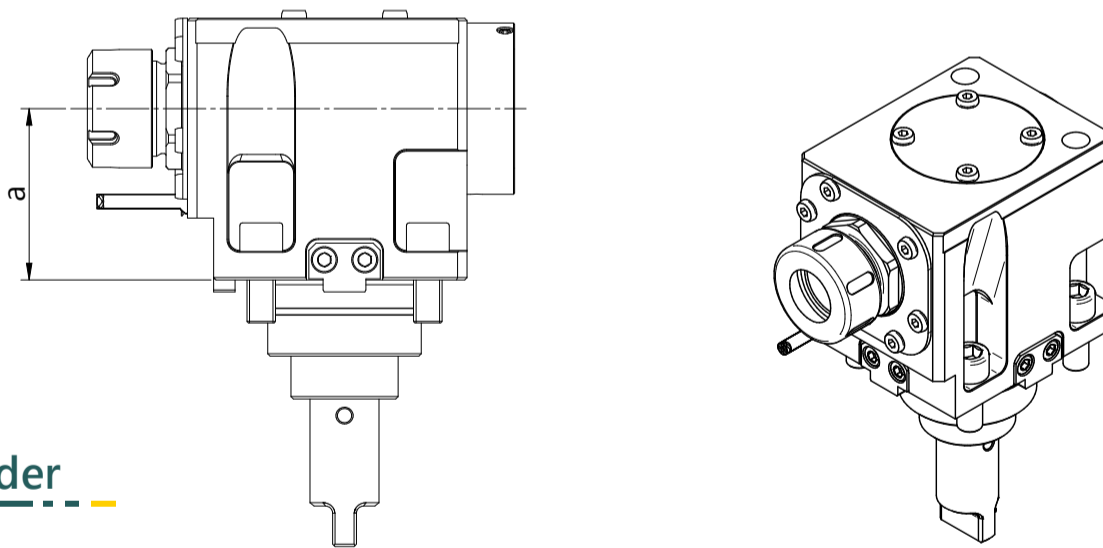
Driven Tool holder

(Doosan 1809)



0° 動力刀座
Straight driven Tool holder

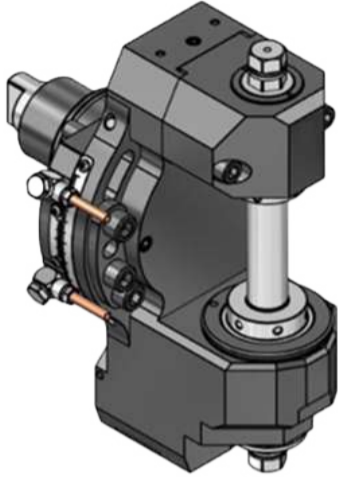
Type	ER	a NL(mm)	coolant supply	speed (rpm)	gear ratio i=n1:n2	Specs
BMT45	25	51	ext. 5~80BAR	6000	1	BMT45-1809-25
	25	57	int. 5~80BAR	6000	1	BMT45-1809-25
BMT55	25	51	ext. 5~80BAR	6000	1	BMT55-1809-25
	25	51	int. 5~80BAR	6000	1	BMT55-1809-25
BMT65	32	60	ext. 5~80BAR	6000	1	BMT65-1809-32
	32	60	int. 5~80BAR	6000	1	BMT65-1809-32
BMT75	40	64.5	ext. 5~80BAR	5500	1	BMT75-1809-40
	40	64.5	int. 5~80BAR	5500	1	BMT75-1809-40
BMT85	50	110	ext. 5~80BAR	5000	1	BMT85-1809-50



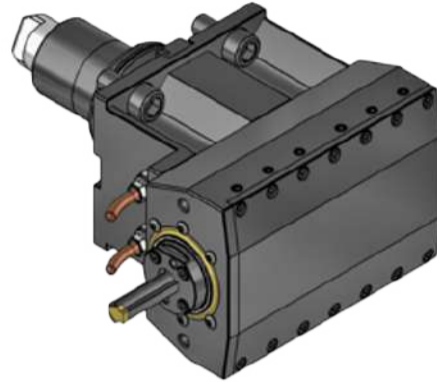
90° 動力刀座
90° driven Tool holder

Type	ER	a NH(mm)	coolant supply	speed (rpm)	gear ratio i=n1:n2	Specs
BMT45	25	65	ext. 5~80BAR	6000	1	BMT45-1809-25-65
	25	65	ext. 5~80BAR	6000	1	BMT45-1809-25-65
	25	85	int. 5~80BAR	6000	1	BMT45-1809-25-85
BMT55	25	70	ext. 5~80BAR	6000	1	BMT55-1809-25-70
	25	70	ext. 5~80BAR	6000	1	BMT55-1809-25-70
	25	85	int. 5~80BAR	6000	1	BMT55-1809-25-85
BMT65	32	72	ext. 5~80BAR	6000	1	BMT65-1809-32-72
	32	72	int. 5~80BAR	6000	1	BMT65-1809-32-72
BMT75	40	60	ext. 5~80BAR	5500	1	BMT75-1809-40-60
	40	60	int. 5~80BAR	5500	1	BMT75-1809-40-60
BMT85	50	110	ext. 5~80BAR	5000	1	BMT85-1809-50-110

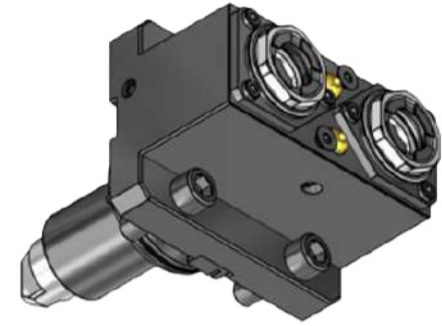
BMT滾齒動力刀座
Gear Hobbing unit



BMT插槽動力刀座
Broaching unit



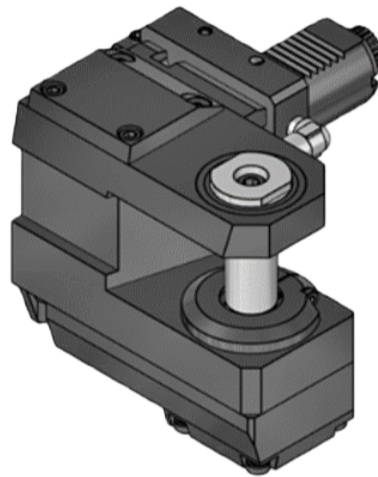
BMT軸向雙頭鑽銑動力刀座
Axial milling and drilling
driven tool holder double heads



BMT萬向動力刀座
Universal driven tool holder



VDI滾齒動力刀座
Gear Hobbing unit



雙搪孔刀座
Dual boring bar tool holder



提供各型式歐美及日系介面刀座
Various tool holder interfaces available

DIN5480



DIN5482



DIN1809



SPUR MT TOEM
(Baruffaldi)



Okuma



HASS



DOOSAN



MAZAK



MoriSeiki



Nakamura



※ 請洽營業單位
※ Contact with GPM sales team for more details



霄特國際股份有限公司
GPM Co., Ltd.
台中市南屯區環中路四段368號
TEL:+886-4-2380-5836
FAX:+886-4-2380-5832
Mail:info@GPMcnc.com
www.GPMcnc.com



上海德霄精密機械有限公司
GP International Co., Ltd.
上海市松江區新橋鎮民強路301號
22棟廠房
Tel :+86-21-5764-9075
Fax:+86-21-5764-9076
Mail:infocn@GPMcnc.com
www.gpi-china.com

