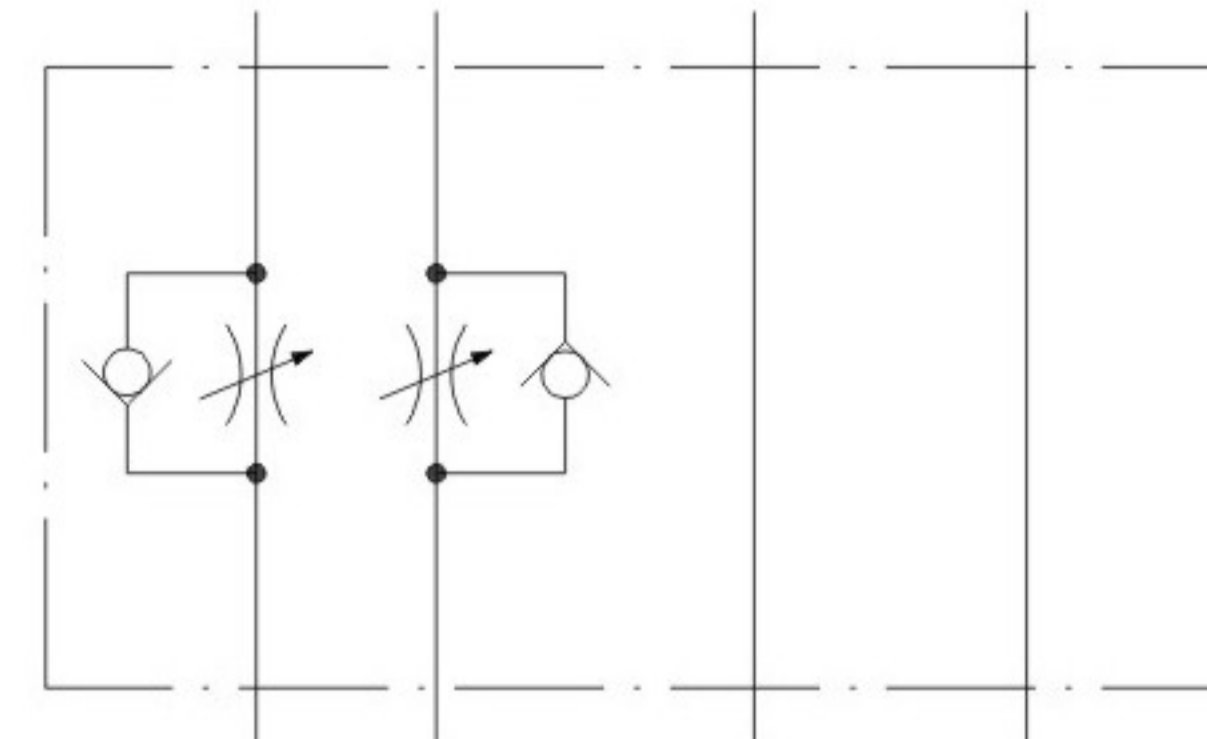


疊加式單向節流閥



JIS油壓符號



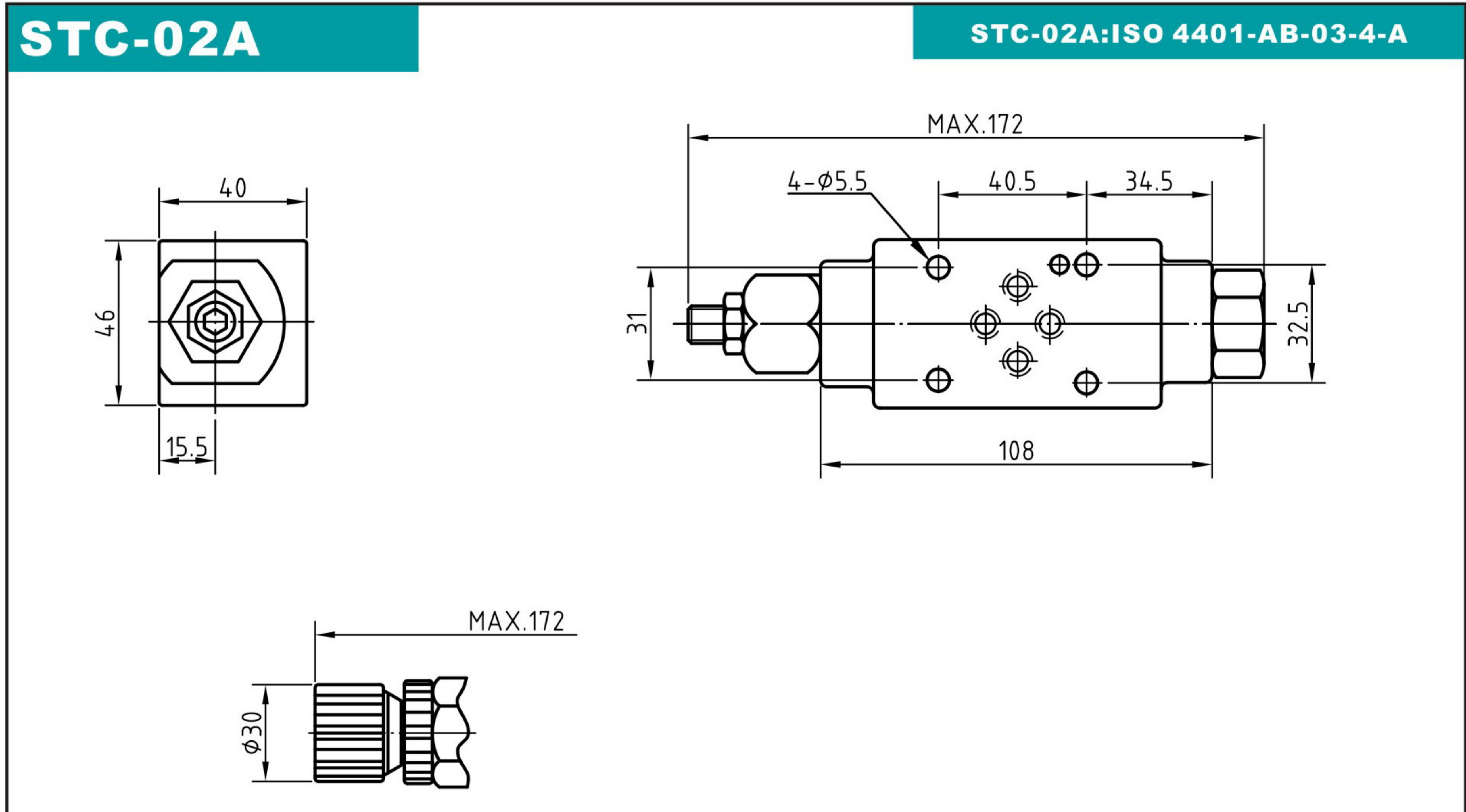
型號說明

STC	-02	W	Y
系列	公稱口徑	控制油路	控制方式
疊加式單向節流閥	02 : 6mm 03 : 10mm 04 : 16mm 06 : 25mm	A : A孔 B : B孔 P : P孔 W : A&B孔	X : 入油控制 Y : 回油控制

規格

型號	最高工作壓力 MPa	額定流量 ℓ/min	流量調整範圍 ℓ/min
STC-02	25	35	0.3~35
STC-03		60	0.5~60
STC-04		160	1.0~160
STC-06		200	1.0~200

外型尺寸



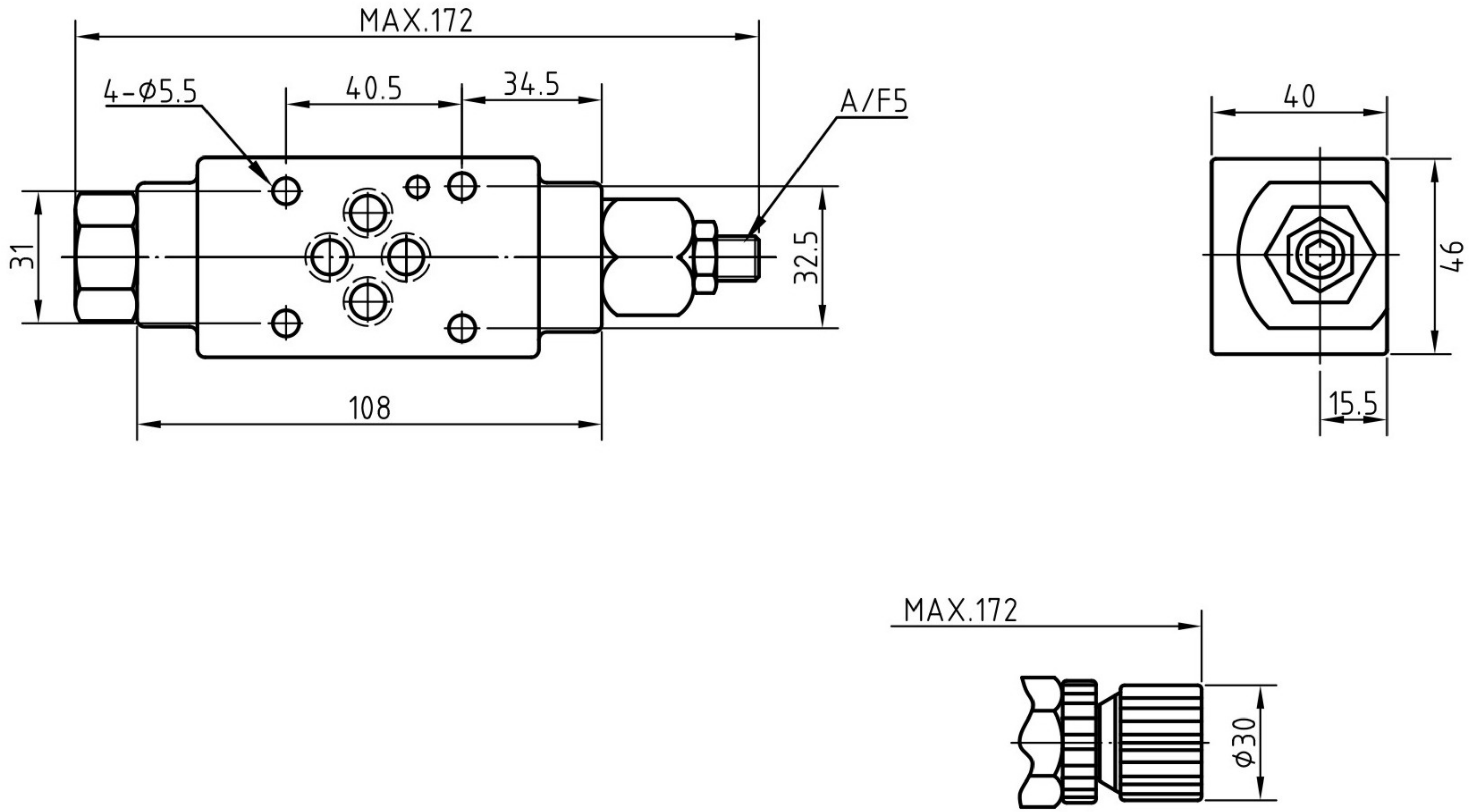
E

疊加閥

疊加式單向節流閥

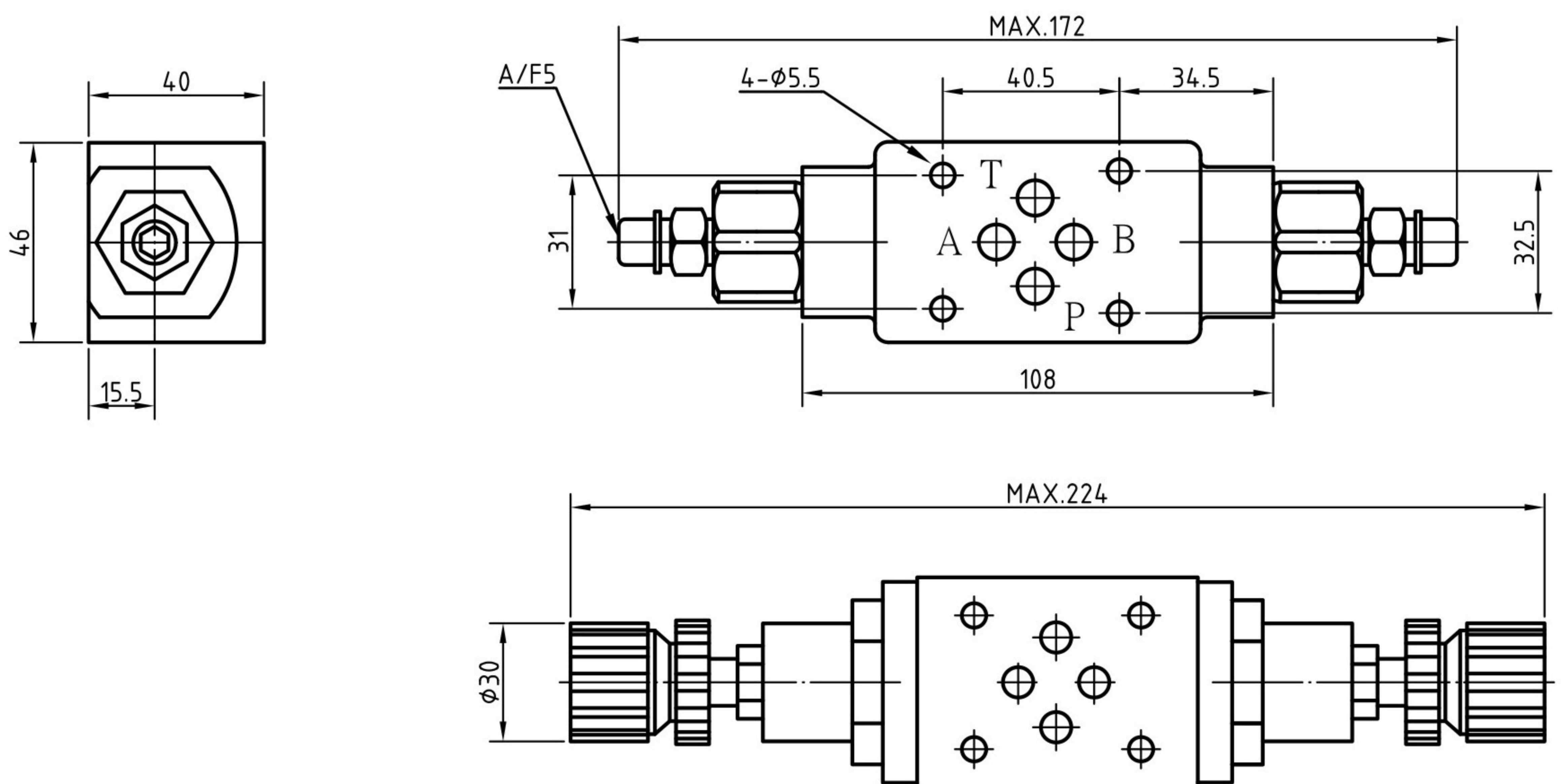
STC-02B

STC-02B:ISO 4401-AB-03-4-A

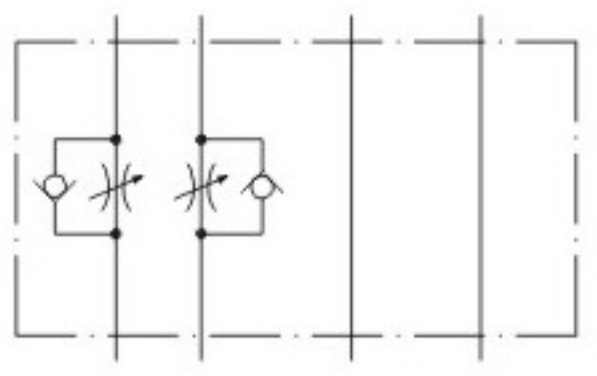


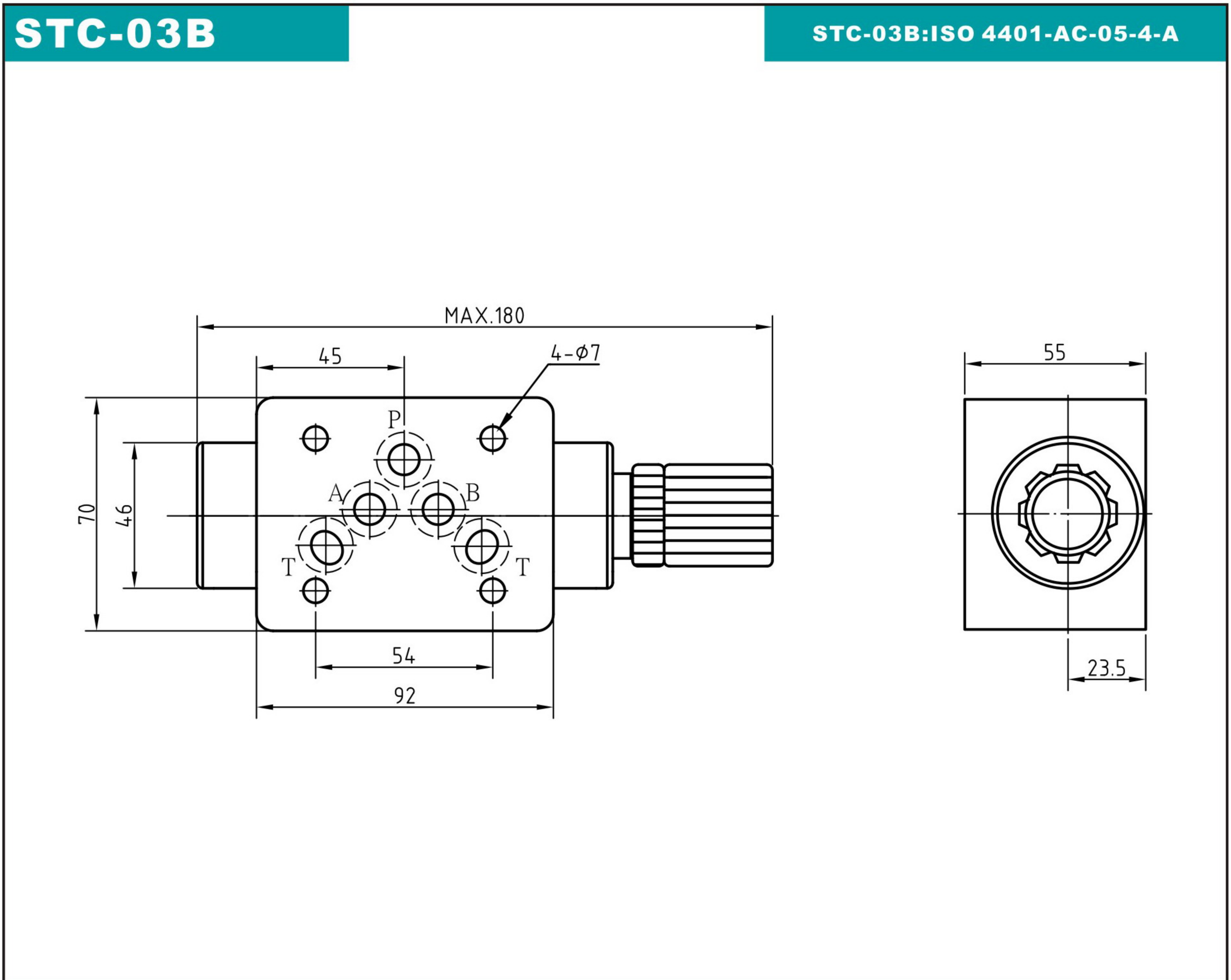
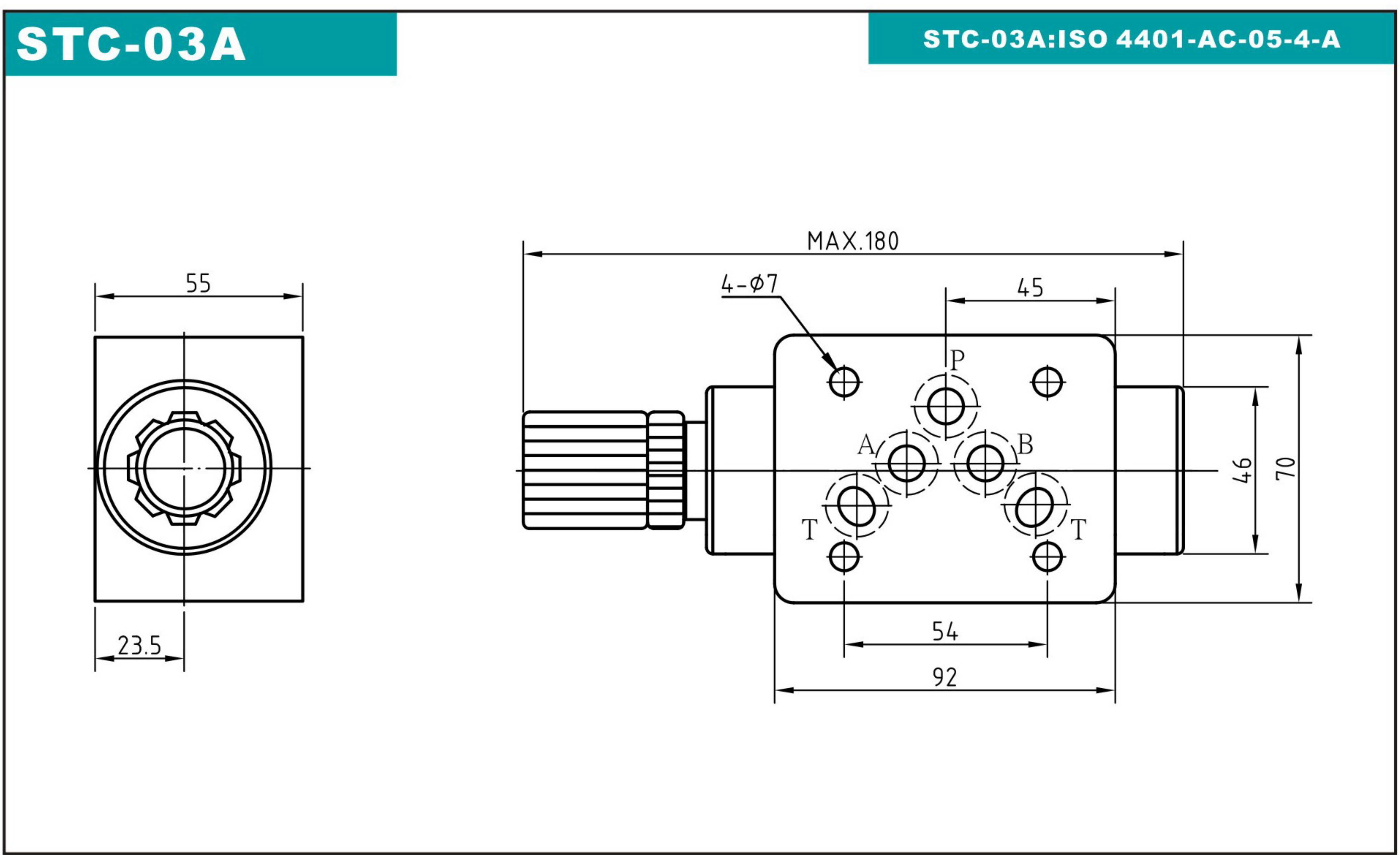
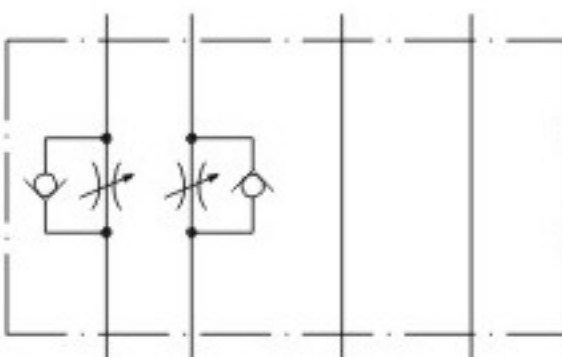
STC-02W

STC-02W:ISO 4401-AB-03-4-A



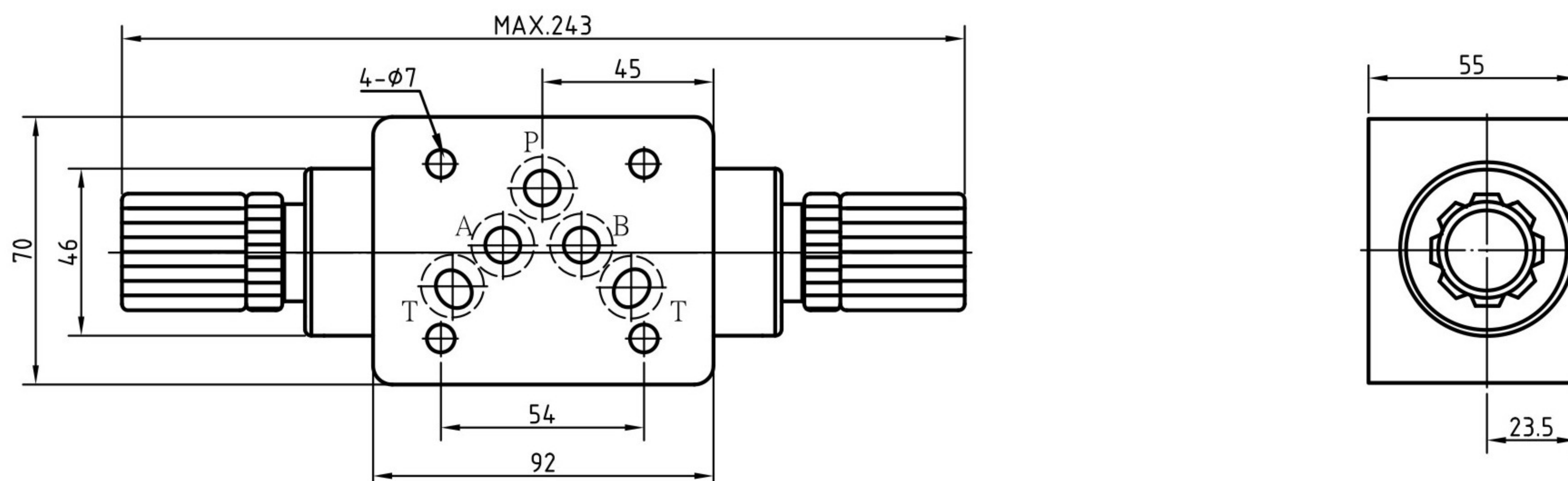
疊加閥
疊加式單向節流閥





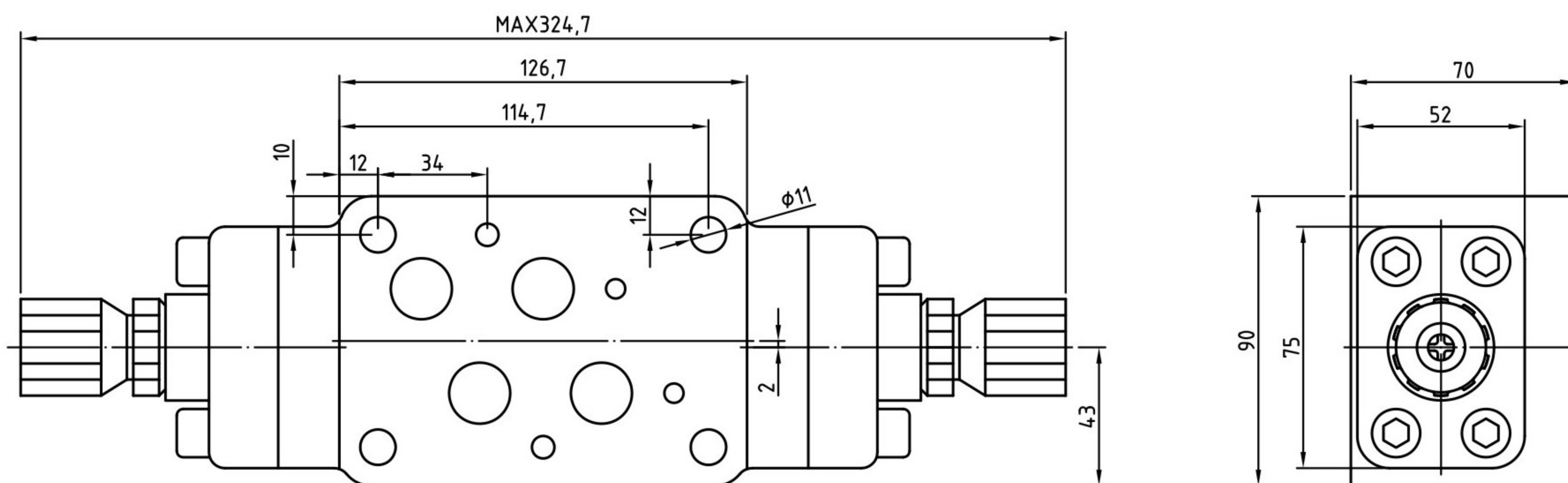
STC-03W

STC-03W:ISO 4401-AC-05-4-A



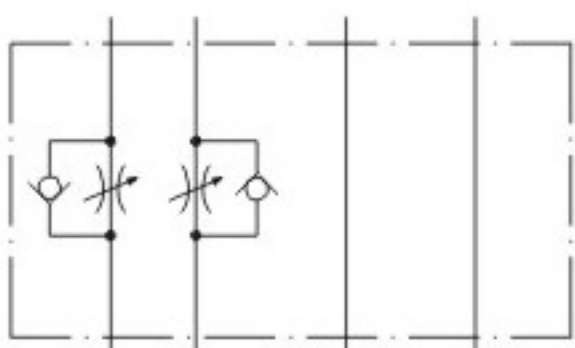
STC-04W

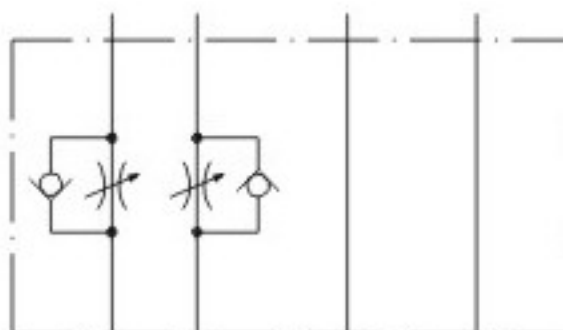
STC-06A:ISO 4401-AD-07-4-A



E

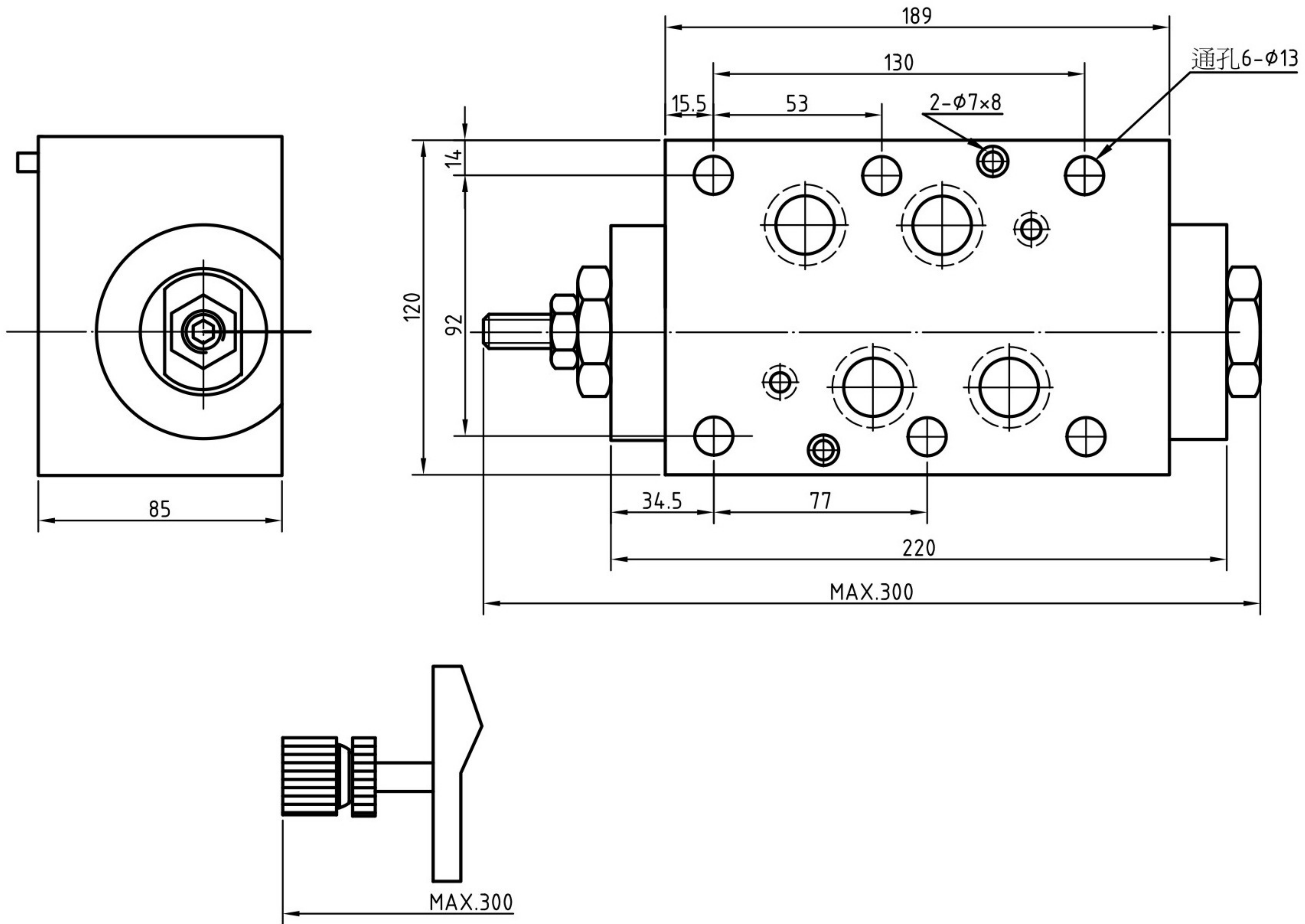
疊加閥
疊加式單向節流閥





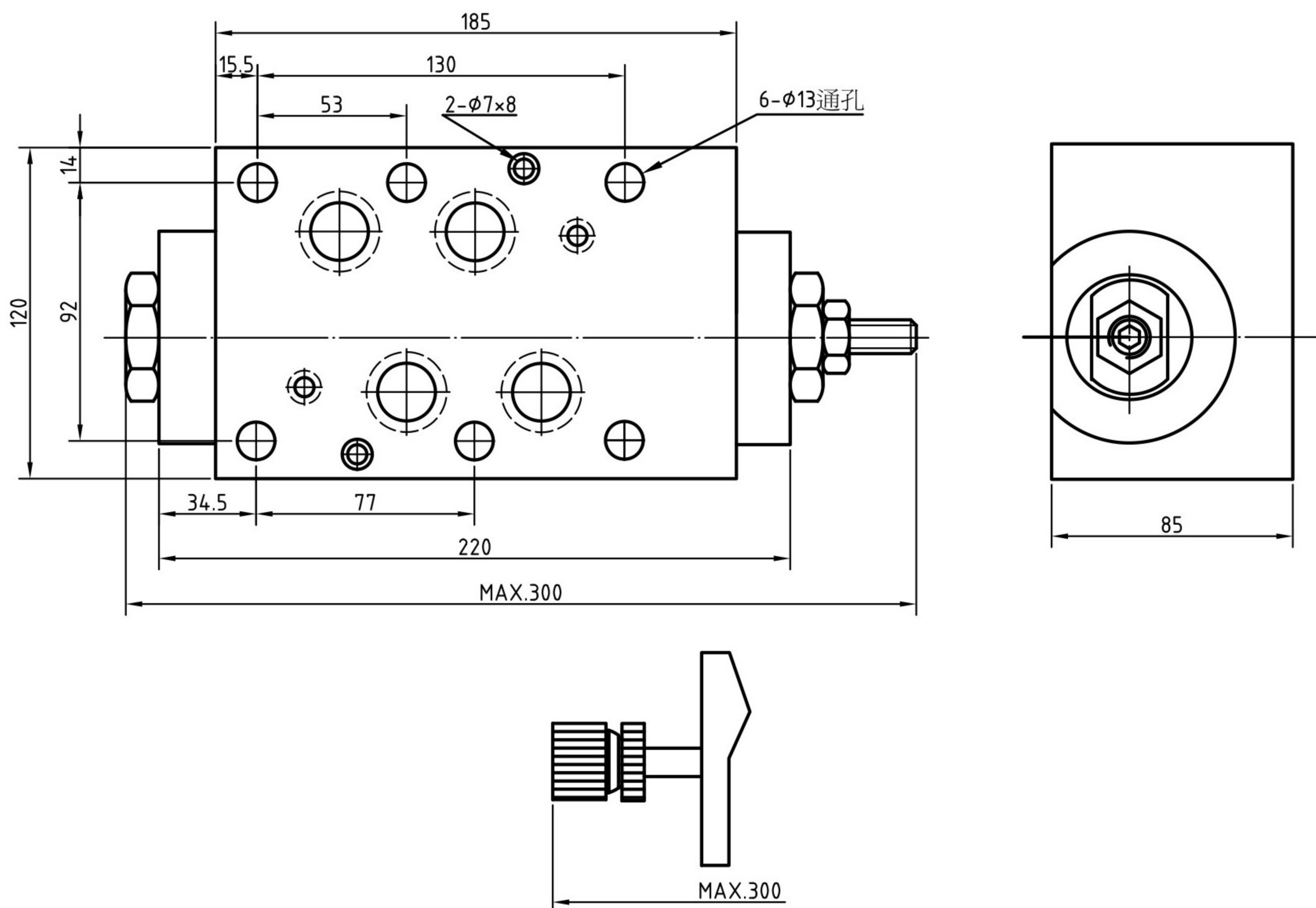
STC-06A

STC-06A:ISO 4401-AE-08-4-A



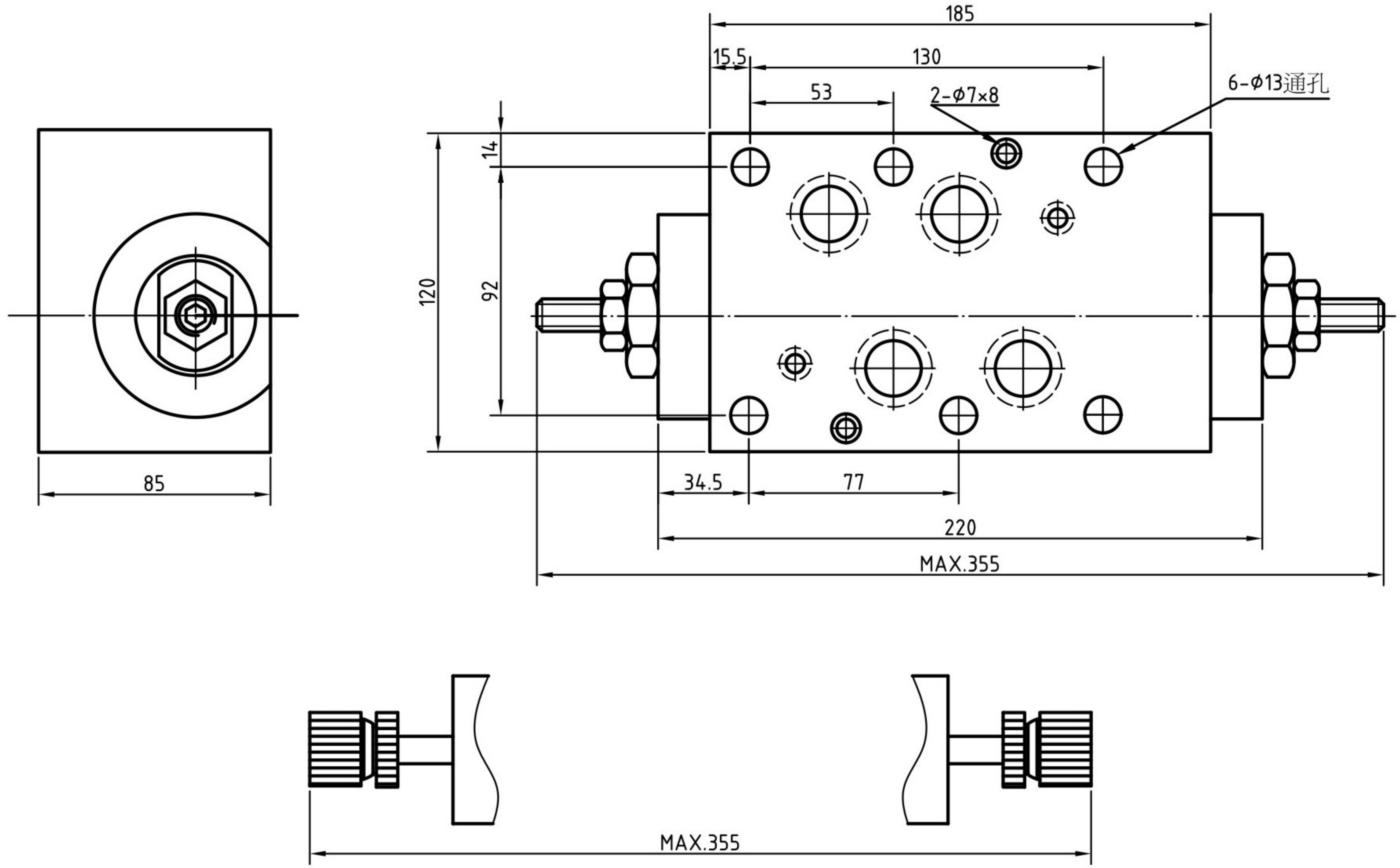
STC-06B

STC-06B:ISO 4401-AE-08-4-A



STC-06W

STC-06W:ISO 4401-AE-08-4-A



疊加閥

疊加式單向節流閥

