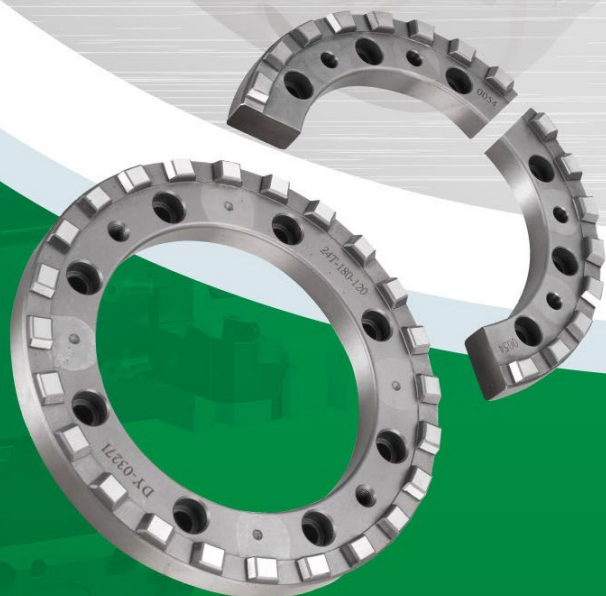


Dengyu
MACHINERY CO., LTD.

登裕機械有限公司

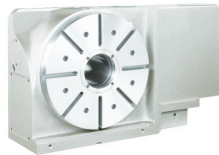


服務項目

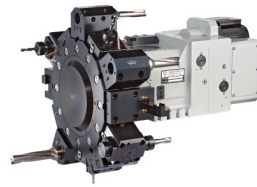
登裕秉持著永續經營為本，技術提升為上，精心製造高品質、高剛性、高精度、CNC車床刀塔、CNC第四軸、CNC龍門側銑頭之離合齒。在生產與設備上不斷的提升精進，並積極開拓海外市場，以滿足客戶市場需求。從車床、銑床、磨床、滾齒、齒研，到最後的三次元精密檢驗都一絲不苟的嚴密控管品質，將齒式離合齒產品推向國際最精密(頂級)的品質，精度足以媲美國際水準，並以提供客戶最完美、完善的服務。



自動90度銑頭



數控分度盤



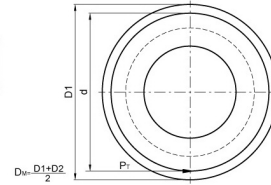
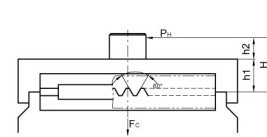
動力刀塔

用途

Purposes 分度齒盤主要用於車床刀塔、四軸分度盤、五面加工中心機、自動控制裝置、汽輪機和航空領域等。
Curvic Coupling use for turret of CNC lathe machining center, robot, gas turbine and airplane, etc.

精密測量

High precision measurement



1. Allowable level load: F
允許最大水平載荷 $F = \frac{P_1(D1/2)}{H_2} \text{ kg}$
2. Allowable perpendicular load: W
允許最大豎直載荷 $W = \frac{P_1(D1/2)}{R_1(D1/2)} \text{ kg}$
3. Circular component of force: N(kg)
環型部件載荷 $N = P \tan 60^\circ$
4. Allowable TORQUE: (kgf-mm)
允許扭矩 $T = P \tan 60^\circ \times (DM/2) = M(DM/2)$

特性

Features

- 產品規格齊全有8、10、12、24、36、40、60、72、360齒，且接受特殊規格訂做。
We offer all kinds of specifications, including: 8T, 10T, 12T, 24T, 36T, 60T, 72T and 360T. Special orders also acceptable.
- 使用高級SCM415H鋼材，並經過熱處理加工後，硬度達HRC58°，耐衝擊、高剛性。
Uses SCM415H material. After heat treating the temper remains HRC58° and it has high rigidity & durable impact force.
- 超精密度配合，互換性佳，經長期使用精度穩定。
High accuracy, interchangeable and that accuracy remains the same after long term use.
- 齒形六邊銳角，皆為倒角，以防碰撞引起毛邊影響精度。
Tooth profile six side acute angles is the bevel edge that causes the fragments influence precision by against collision.
- 割出精度±3秒，重複精度1秒。
Indexing accuracy: ±3 sec. Repeatability: 1 sec.



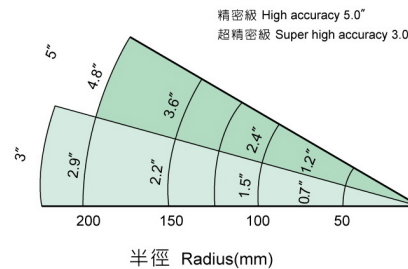
工作台直徑與聯結器關係表

The relationship between rotary table DIA. and hirth coupling O.D.

| 工作台直徑 Rotary table DIA. | Ø300 | Ø400 | Ø500 | Ø630 | Ø800 | Ø1000 |
|----------------------------|------|------|------|------|------|-------|
| 聯結器外徑 Coupling O.D. | Ø250 | Ø320 | Ø400 | Ø450 | Ø600 | Ø800 |

割出精度說明

Indexing accuracy explanation



質量控制程序

Quality control procedures

| 項目 Item | | 精度 Accuracy | 超高精度 Super Accuracy |
|-----------------------|-------------------------------------|------------------------|------------------------|
| Tooth Contact 齒接觸 | At the number of teeth(B.N) 接觸齒數 | More than 80% 大於80% | More than 90% 大於90% |
| | At the face width (B.W) 齒面接觸寬度 | More than 50% 大於50% | More than 50% 大於50% |
| Tooth Coupling 齒咬合 | Run out on top face 頂部跳動 | 0.02 | 0.01 |
| | Run out at outside diameter 外徑跳動 | 0.02 | 0.01 |
| | Indexing Accuracy 分劃精度 | 5" | 3" |
| | Coupling Thickness 咬合厚度 | ±0.10 | ±0.05 |

產品類別



三片式離合齒



三片式離合齒



三片式離合齒



三片式離合齒



三片式離合齒



三片式離合齒



三片式離合齒



三片式離合齒



二片式離合齒



二片式離合齒



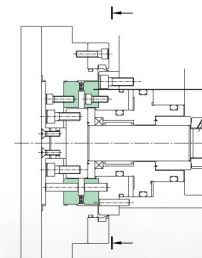
二片式離合齒



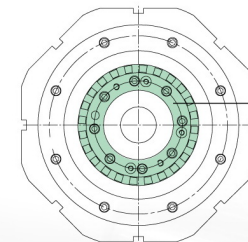
二片式離合齒

齒式離合齒安裝示意圖

Curved clutch installation diagram



齒式離合器



齒式離合器

廠內設備與檢驗設備



冠昱CNC雙主軸研磨機



ZEISS三次元量測儀器

分度齒盤主要用於車床刀塔、四軸分度盤、
五面加工中心機、自動控制裝置、汽輪機和航空領域等。

Curvic Coupling use for turret of CNC lathe machining center,
robot, gas turbine and airplane, etc.



齒式離合齒安裝示意圖 Curved clutch installation diagram

