

lastik tyre opona
neumático タイヤ 輪胎 шина
a pneu 橡胶 Reifen neumático λάσ
Dугуй lastik tyre opona
Reifen neumático 轮胎 輪胎 шина
Reifen neumático 轮胎 輪胎 шина
pneu neumático λάστιχο
rengas dæk pneu
neumático 轮胎 輪胎 шина
lastik 橡胶 Reifen neumático
Dугуй lastik tyre opona
neumático 轮胎 輪胎 шина
lastik tyre opona neumático
Reifen neumático 轮胎 輪胎 шина
lastik tyre opona neumático
Reifen neumático 轮胎 輪胎 шина
lastik tyre opona neumático
Reifen neumático 轮胎 輪胎 шина

The Nankang Story

Over 55 Years of Industrious Work, all Dedicated to Motoring Safety

Nankang is proud of our quality products produced over the years. Yet we never cease to pursue excellence in both our R&D and manufacturing processes.

Nankang Rubber Tire's heritage runs deep; having the longest history among the tire manufacturers in Taiwan. For over 55 years, guided by our corporate motto, "Integrity, Pragmatism, and Innovation", we have persisted in creating performance and growth. In response to increasingly discerning market demands, we have striving aggressively towards our goals of "product innovation with R&D, differentiation from competition, product quality upgrading, customer satisfaction, after-sale service and professional management", in order to offer more and more innovative products.

Over 55 Years of Honour and Recognition, Winning Numerous Awards with our Effort in R&D

Over the past 55 years, our continuous efforts in keeping up with the advancement of technology and product quality control have proven to be fruitful not only in developing many innovative and durable products, but also bringing us numerous global awards in Quality Assurance.

Over 55 Years of Business Splendor, High Time to Turn a New Page

Nankang Rubber Tire's corporate logo has been in use for more than 55 years. Facing increasingly fierce competition from the global tire industry and considering the trend of corporate reforms, in 2010 Nankang embarked upon a review of its corporate identity system "CIS". Through this new project, we aim to build a new Nankang Tire brand image, of world standard. Being able to keep up with the times, the company will proudly move on to the next splendid century of its corporate history.

Mastering the Colourful World Stage with a New CIS

A passionate yet steady symbol, the **N**, represents Nankang Rubber Tire's sustainable business philosophy, and her corporate spirit. Care for the customer is always of paramount importance.

The CIS employs a duo colour combination of red and black. The Red color expresses Nankang's corporate spirit of high passion, respect for customers, energy and vitality. The Black color highlights the strength and stability of her tire business and represents an image of generosity, grandeur, professionalism and trustworthiness.

Whether it be for cruising the highway, striding over an icescape, or conquering a dilapidated off-road track, for Over 55 years, Nankang Tire has offered drivers safe innovative motoring, with a spirit as unbreakable as the tires she manufactures.

From her humble beginnings, Nankang has advanced across five continents, and covered more than 100 countries globally. From tire industry leader in Taiwan, Nankang is now steadily driving her way onto the global stage with unlimited opportunity.

Milestone



The first aircraft tire developed for The North American Aviation T-28 Trojan trainer.

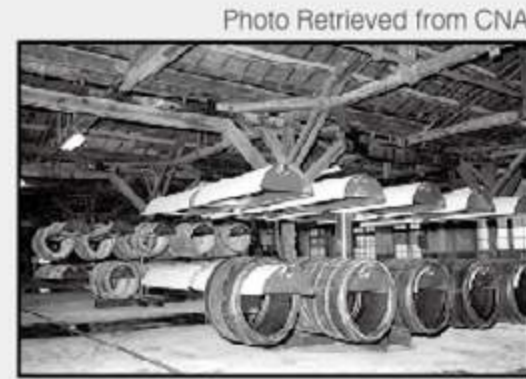


Photo Retrieved from CNA

Production of PCR tires in Zhangigang Plant in China.



Photo Retrieved from CNA

Successful development of high performance and fuel saving ECO series.



NANKANG RRC laboratory was accredited by TÜV SÜD, the first (and only) in Taiwan.



NANKANG AS-2+ was certificated by TÜV SÜD.



1959 NANKANG Rubber Tire Corporation Ltd. Was established, the 1st tire manufacturer in Taiwan.

1973 The first Taiwanese tire maker which successfully developed the steel belted radial tires.

1976

1980 Honored with the award of Quality Control. Group by R.O.C. Society of Quality Control.

1984 Development of all steel wires radial tires for trucks and buses.

1990 E-Mark certificated received (Certificate to produce Export Europe)

1991 Obtained ISO-9001 certificate from DNV quality approval system.

1994 High performance stud-less snow tires were successfully developed.

1997 ISO/TS 16949 certificate was awarded.

1990 Hsin-Fung plant started to produce raddial tires for passenger sedan.

1973 Hsin-Fung (Taiwan) Plant was established.



2007 SNI (Indonesia) and IN (Brazil) certificate received.

2008 Produced Ha-Oil free series product.



Photo Retrieved from CNA

2009 Introduced high level Raddiac series product.



2011 Awarded 100 Taiwan TOP brands by Ministry of Economic Affairs, ROC

2012 NANKANG RRCm laboratory was founded.

2012 Launched the NEW CIS. NANKANG has grown to become an influential and global company.



2014 NANKANG ECO-2+ was certificated by TÜV SÜD.

2015



2015 NANKANG RRC laboratory was accredited by IDIADA.

Our Commitment

to the Environment

Nankang realizes the fact that we are a party of the Earth's Eco system, and so we take pride in our responsibility to provide a better environment for future generations. Our commitment is evident right throughout the manufacturing process. Our raw materials are formulated to lower pollution emissions. As such, our suppliers are required to provide raw materials which conform to all relevant internationally recognized environmental regulations.

Extended Tire Life for Better Value and a Better Environment

Extending the durability of tires not only creates higher economic value for drivers, but also reduces the impact of scrapped tires upon the environment. To achieve this, Nankang uses highly structured chemical agents to lessen tread wear, and unique additives designed to slow the tire aging process. High pressure-bearing materials are applied, to enable tires to be properly inflated. While value and safety are essential to customer satisfaction, product quality and performance are never compromised.



Conformity to Regulations with HA(High Aromatic)-Oil Free Formula for VOC Reduction

Nankang tire compounds are formulated to meet the European Union's regulations on environmental protection which came into force in 2010. HA-oil free compounds are used across the major portion of our product line. In addition, necessary measures are taken to reduce volatile organic compound ("VOC") generation in our manufacturing, thus eliminating further pollution in the process.

Lower Rolling Resistance for Fuel Saving and Carbon Dioxide Emission

Fuel consumption and carbon dioxide emissions are direct functions of a tire's rolling resistance. Lowering rolling resistance is one of the top priorities for our product development. High dispersible silica and unique cross linking agents are applied in our formula to achieve the stable integration of natural, synthetic rubber and silica, which leads to the advanced result of lower rolling resistance, less heat generation and better grip performance.

INDEX



The Nankang Story P.01-02
 Milestone P.03-04
 Our Commitment P.05-06

Sportnex

AS-2⁺ <small>NEW</small> 	NS-2R 	NS-20 	NS-2
P.09-10	P.11-12	P.13-14	P.15-16

ECONEX

NA-1 <small>NEW</small> 	ECO-2⁺ 	AS-1 	RX-615
P.17-18	P.19-20	P.21-22	P.23-24

NK COMFORT

NK COMFORT

XR-611 	N-729
P.25	P.26

Rollnex

SP-9 <small>NEW</small> 	SP-7 	FT-4
P.27-28	P.29	P.30

Rollnex

AT-5 <small>NEW</small> 	FT-7 	FT-9 	N-889
P.31-32	P.33-34	P.35	P.36

NK VAN

N-870 	TR-10 <small>NEW</small> 	CW-25 	CW-20
P.36	P.37-38	P.39	P.40

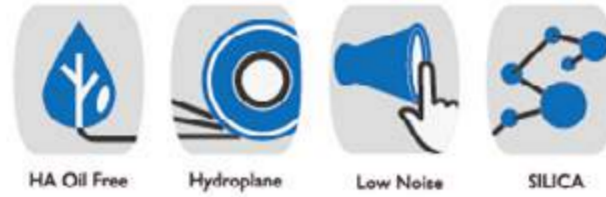
TRUCK & BUS

NR-066 	HA-858 	HD-757
P.41-42	P.43	P.44

Inch Up P.45-48
 Safty / Tire Sidewall P.49-50
 European Tire Label / Rim Width P.51-52

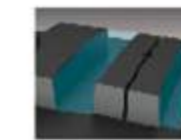
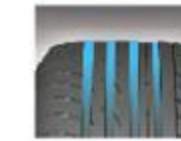
AS-2⁺

NEW



Compared to the average performance of three leading EU competitors, scopes of tests
 • Safety Wet: Aquaplaning (Straight-line), Braking, Lateral Grip, Handling
 • Safety Dry: Braking, Handling
 • Robustness and environmental: Rolling Noise, High Speed Advanced, Rolling Resistance.
 Tested by TÜV SÜD Automotive in 2015
 Tyre size: 225/45ZR17 94W; Test Vehicle: VW Golf VII, VW Passat Variant
 Test locations: ATP(D), FAKTmotion(D), TÜV SÜD PS (D), Report No. 713051806

- The void ratio of the inside and outside are respectively 38% and 34%, which improve drainage efficiency and wet handling.
- With broadened circumferential groove width, the section area of inside/outside grooves are increased 21.3% and 43.8% respectively compared to the conventional design. And it increases more water containing for better drainage performance.
- Brand new profile design and reinforced sidewall design upgrade tire stiffness.
- Serrated wall of circumferential grooves discharge water effectively and reduce the noise caused by the friction between airflow and groove wall.
- The chamfering angle of lateral grooves reduce rolling sound and improve block stiffness.



AS-2+ Size List

Series	Inch	Size	Load Index	Speed Index	Rim Width (Inch)	OD (mm)	SW (mm)	EU TIRE LABEL			
								RRC	Wet Grip	Noise Value (dB)	Noise Class
30'	20	265/30ZR20	94(XL)	Y	9.5	668	271	E	A	73	2
35'	22	285/35ZR22	106(XL)	W	10	759	290	E	A	75	2
40'	18	235/40ZR18	95(XL)	Y	8.5	645	241	E	B	71	2
	18	225/40ZR18	92(XL)	Y	8	637	230	E	B	71	2
45'	17	205/40R17	84(XL)	V	7.5	596	212	E	B	71	2
	16	195/40ZR16	80(XL)	W	7	562	200			N/A	
	21	265/45ZR21	104	W	9	771	266			N/A	
45'	20	245/45ZR20	103(XL)	Y	8	728	243	E	B	72	2
	20	235/45ZR20	100(XL)	W	8	669	236	E	B	71	2
	17	255/45ZR17	98	Y	8.5	662	255	E	B	71	2

Series	Inch	Size	Load Index	Speed Index	Rim Width (Inch)	OD (mm)	SW (mm)	EU TIRE LABEL			
								RRC	Wet Grip	Noise Value (dB)	Noise Class
45'	17	225/45ZR17	94(XL)	Y	7.5	634	225	E	B	71	2
	17	225/45ZR17	94(XL)	W	7.5	634	225	E	B	71	2
	17	225/45R17	94(XL)	V	7.5	634	225	E	B	71	2
	17	215/45R17	91(XL)	V	7	626	213	E	B	71	2
	17	205/45R17	88(XL)	V	7	616	206	E	B	71	2
	16	245/45ZR16	94	W	8	626	243	E	B	71	2
50'	17	225/50ZR17	98(XL)	Y	7	658	233	E	B	71	2
	17	205/50R17	93(XL)	V	6.5	638	214	E	B	71	2
60'	17	215/60R17	96	H	6.5	690	221	E	B	71	2

N/A = Values are not available at the time of publication.

NS-2R



**EXPLORING
THE LIMITS**

1. The three main circumferential grooves on central tread can improve drainage efficiency and wet handling performance.



2. Unique groove wall angle design prevents excessive stress massing to reduce irregular treadwear effectively.



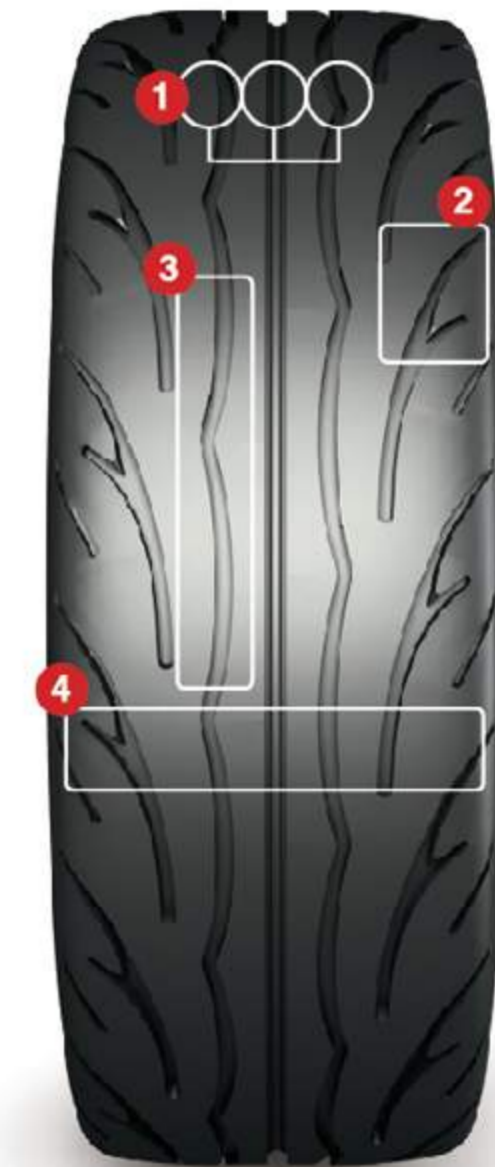
3. Continuous tread shoulder design enhances tire stiffness when cornering.



4. The optimized tread width has 13% wider contact patch than a regular tire, and increases stability while driving at high speed.



5. Large blocks on tread shoulder upgrade stiffness and handling performance.



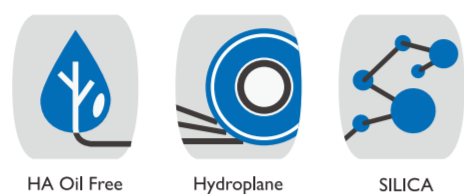
NS-2R Size List

Series	Inch	Size	Load Index	Speed Index	Rim Width (Inch)	OD (mm)	SW (mm)	EU TIRE LABEL			
								RRC	Wet Grip	Noise Value (dB)	Noise Class
35'	18	265/35ZR18	97(XL)	Y	9.5	643	271	F	B	73	2
	18	255/35ZR18	94(XL)	Y	9	635	260	F	B	73	2
40'	18	235/40ZR18	95(XL)	Y	8.5	645	241	F	B	72	2
	18	225/40ZR18	92(XL)	Y	8	637	230	F	B	71	2
	17	255/40ZR17	98(XL)	W	9	636	260	F	B	73	2
	17	235/40ZR17	94(XL)	W	8.5	620	241	F	B	72	2
45'	17	205/40ZR17	84(XL)	W	7.5	596	212	F	B	71	2
	17	235/45ZR17	97(XL)	W	8	644	236	F	B	72	2
	17	225/45ZR17	94(XL)	W	7.5	634	225	F	B	71	2
	16	205/45ZR16	87(XL)	W	7	590	206	F	B	71	2

Series	Inch	Size	Load Index	Speed Index	Rim Width (Inch)	OD (mm)	SW (mm)	EU TIRE LABEL			
								RRC	Wet Grip	Noise Value (dB)	Noise Class
50'	16	195/50ZR16	88(XL)	W	6	602	201	F	B	71	2
	15	205/50ZR15	89(XL)	W	6.5	587	214	F	B	71	2
	15	195/50ZR15	86(XL)	W	6	577	201	F	B	71	2
	15	165/50R15	73	V	5	547	170			N/A	
	13	175/50R13	72	V	5.5	506	182			N/A	
55'	16	205/55ZR16	91	W	6.5	632	214	F	B	71	2
	15	195/55ZR15	89(XL)	W	6	595	201	F	B	71	2
	15	165/55R15	75	V	5	563	170			N/A	
60'	14	165/55R14	72	V	5	538	170			N/A	
	14	185/60R14	86(XL)	V	5.5	578	189	F	B	71	2
	13	185/60R13	84(XL)	V	5.5	552	189	F	B	71	2

N/A = Values are not available at the time of publication.

NS-2



1. Two central circumferential grooves design can efficiently direct water away and enhance superior wet handling.
2. Computer simulated V-shaped drainage sub-grooves increase resistance to hydroplaning at high speed running through deep water.
3. Two-in-one pitches and variable width tread profile help to reduce pattern noise and provide a quieter comfort ride.
4. Shoulder edge sipes ensure even and prolonged tread wear.

NS-2 Size List

Series	Inch	Size	Load Index	Speed Index	Rim Width (Inch)	OD (mm)	SW (mm)	EU TIRE LABEL				
								RRC	Wet Grip	Noise Value (dB)	Noise Class	
30'	24	255/30ZR24	97(XL)	W	9	764	260	E	C	71	2	
	22	265/30ZR22	100(XL)	W	9.5	719	271	E	C	71	2	
	22	255/30ZR22	95(XL)	W	9	713	260	E	C	71	2	
	22	245/30ZR22	92(XL)	W	8.5	707	248	E	C	71	2	
	20	285/30ZR20	99(XL)	Y	10	680	290	E	C	71	1	
	20	275/30ZR20	97(XL)	Y	9.5	674	278	E	C	71	2	
	20	255/30ZR20	92(XL)	Y	9	662	260	E	C	71	2	
	20	245/30ZR20	95(XL)	Y	8.5	656	248	E	C	71	2	
	20	235/30ZR20	88(XL)	W	8.5	650	242	F	C	71	2	
	20	225/30ZR20	85(XL)	W	8	644	230	F	C	71	2	
	20	215/30ZR20	82(XL)	W	7.5	638	218	F	C	71	2	
	19	285/30ZR19	94	Y	10	655	290	E	C	71	1	
	19	275/30ZR19	96(XL)	Y	9.5	649	278	E	C	71	2	
	19	265/30ZR19	93(XL)	Y	9.5	643	271	E	C	71	2	
	19	245/30ZR19	89(XL)	Y	8.5	631	248	F	C	71	2	
	18	285/30ZR18	93	Y	10	629	290	E	C	71	1	
	18	285/30R18	93	H	10	629	290	E	C	71	1	
	35'	20	275/35ZR20	102(XL)	Y	9.5	700	278	E	C	71	2
		20	255/35ZR20	97(XL)	Y	9	686	260	E	C	71	2
		20	245/35ZR20	95(XL)	Y	8.5	680	248	E	C	71	2
20		235/35ZR20	92(XL)	W	8.5	672	241	E	C	71	2	
20		225/35ZR20	90(XL)	Y	8	666	230	F	C	71	2	
19		275/35ZR19	96	Y	9.5	675	278	E	C	71	2	
19		255/35ZR19	96(XL)	Y	9	661	260	E	C	71	2	
19		245/35ZR19	93(XL)	Y	8.5	655	248	E	C	71	2	
19		235/35ZR19	91(XL)	Y	8.5	647	241	E	C	71	2	
19		225/35ZR19	88(XL)	Y	8	641	230	F	C	71	2	
19		215/35ZR19	85(XL)	Y	7.5	633	218	F	C	71	2	
18		275/35ZR18	95	Y	9.5	649	278	E	C	71	2	
18		275/35R18	95	H	9.5	649	278	E	C	71	2	
18		265/35ZR18	93	W	9.5	643	271	E	C	71	2	
18		265/35R18	93	H	9.5	643	271	E	C	71	2	
18	255/35ZR18	94(XL)	W	9	635	260	E	C	71	2		

Series	Inch	Size	Load Index	Speed Index	Rim Width (Inch)	OD (mm)	SW (mm)	EU TIRE LABEL				
								RRC	Wet Grip	Noise Value (dB)	Noise Class	
35'	18	255/35R18	94(XL)	H	9	635	260	E	C	71	2	
	18	225/35ZR18	87(XL)	W	8	615	230	F	C	71	2	
	18	225/35R18	87(XL)	H	8	615	230	F	C	71	2	
	18	215/35ZR18	84(XL)	W	7.5	607	218	F	C	71	2	
	18	215/35R18	84(XL)	H	7.5	607	218	F	C	71	2	
	18	205/35R18	81(XL)	H	7.5	601	212			N/A		
	17	185/35R17	82(XL)	V	6.5	562	188	F	C	71	2	
	17	165/35R17	75(XL)	V	6	548	170	F	C	71	2	
	40'	20	245/40ZR20	95	Y	8.5	704	248	E	C	71	2
		19	275/40ZR19	101	Y	9.5	703	278	E	C	71	2
19		245/40ZR19	98(XL)	W	8.5	679	245	E	C	71	2	
19		225/40ZR19	93(XL)	Y	8	663	230	E	C	71	2	
18		245/40ZR18	97(XL)	W	8.5	653	248	E	C	71	2	
18		245/40R18	97(XL)	H	8.5	653	248	E	C	71	2	
18		235/40ZR18	95(XL)	W	8.5	645	241	E	C	71	2	
18		235/40R18	95(XL)	H	8.5	645	241	E	C	71	2	
18		225/40ZR18	92(XL)	W	8	637	230	E	C	71	2	
18		225/40R18	92(XL)	H	8	637	230	E	C	71	2	
18		215/40ZR18	89(XL)	W	7.5	629	218	F	C	71	2	
18		215/40R18	89(XL)	H	7.5	629	218	F	C	71	2	
17		275/40ZR17	98	W	9.5	652	278	E	C	73	3	
17		255/40R17	94	V	9	636	260	E	C	71	2	
17		245/40ZR17	91	W	8.5	628	248	E	C	71	2	
17		245/40R17	91	V	8.5	628	248	E	C	71	2	
17		235/40R17	90	V	8.5	620	241	F	C	71	2	
17		215/40R17	83	H	7.5	604	218	F	C	71	2	
17		215/40R17	87(XL)	V	7.5	604	218	F	C	71	2	
17		205/40R17	84(XL)	V	7.5	596	212	F	C	71	2	
17	165/40R17	75(XL)	V	6	564	170	F	C	71	2		
45'	16	215/40ZR16	86(XL)	W	7.5	578	218	F	C	71	2	
	16	205/40R16	83(XL)	V	7.5	570	212	F	C	71	2	
	16	165/40R16	73(XL)	V	6	538	170	F	C	71	2	
	19	245/45ZR19	98	Y	8	703	243	E	C	71	2	
	18	245/45ZR18	100(XL)	Y	8	677	243	E	C	71	2	
	18	245/45R18	100(XL)	H	8	677	243	E	C	71	2	
	18	225/45ZR18	95(XL)	W	7.5	659	225	E	C	71	2	
	18	225/45R18	95(XL)	H	7.5	659	225	E	C	71	2	
	17	245/45R17	95	H	8	652	243	E	C	71	2	
	17	235/45R17	94	H	8	644	236			N/A		
	17	235/45R17	94	V	8	644	236	E	C	71	2	
	17	225/45R17	94(XL)	H	7.5	634	225	E	C	71	2	
	17	225/45R17	94(XL)	V	7.5	634	225	E	C	71	2	
	17	215/45ZR17	91(XL)	W	7	626	213	E	C	71	2	
	17	215/45R17	91(XL)	V	7	626	213	E	C	71	2	
17	215/45R17	91(XL)	H	7	626	213	E	C	71	2		
17	205/45R17	88(XL)	V	7	616	206	F	C	71	2		
16	205/45R16	87(XL)	V	7	590	206	F	C	71	2		
16	195/45R16	84(XL)	V	6.5	582	195	F	C	71	2		
16	165/45R16	74(XL)	V	5.5	554	165	F	C	71	2		
15	195/45R15	78	V	6.5	557	195	F	C	71	2		
15	185/45R15	75	V	6	547	183	F	C	71	3		
50'	17	215/50R17	91	V	7	648	226	E	C	71	2	
	17	205/50ZR17	93(XL)	W	6.5	638	214	E	C	71	2	
	17	205/50R17	93(XL)	V	6.5	638	214	E	C	71	2	
	16	225/50R16	92	V	7	632	233	E	C	71	2	
	16	205/50R16	87	V	6.5	612	214	F	C	71	2	
	16	195/50R16	84	V	6	602	201	F	C	71	2	
	15	205/50R15	86	V	6.5	587	214	F	C	71	2	
	15	195/50R15	82	V	6	577	201	F	C	71	2	
	15	165/50R15	72	V	5	547	170	F	C	71	3	
	17	225/55ZR17	101(XL)	W	7	680	233	E	C	71	2	
55'	16	225/55ZR16	95	W	7	654	233	E	C	71	2	
	16	225/55R16	95	V	7	654	233	E	C	71	2	
	16	225/55R16	99(XL)	V	7	654	233			N/A		
	16	215/55R16	93	V	7	642	226			N/A		
	16	215/55ZR16	97(XL)	W	7	642	226	E	C	71	2	
	16	205/55R16	91	V	6.5	632	214	E	C	71	2	
	15	205/55R15	88	V	6.5	607	214	F	C	71	2	
	15	195/55R15	85	V	6	595	201	F	C	71	2	
	15	185/55R15	82	V	6	585	194	F	C	71	3	
	14	155/55R14	73(XL)	V	5	526	162	F	C	71	2	
60'	14	205/60R14	92(XL)	H	6	602	209	E	C	71	2	
	13	195/60R13	83	H	6	564	201	F	C	71	2	
	13	175/60R13	77	H	5	540	177	F	C	71	3	
65'	14	155/65R14	75	V	4.5	558	157	F	C	71	3	

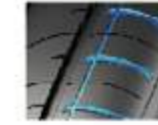
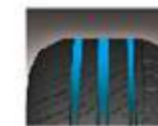
N/A = Values are not available at the time of publication.

NA-1

NEW



1. Light-weight profile and narrow tread width design reduce rolling resistance.
2. The enlarged third section of tread radius lessen contact pressure of tread shoulder, and further reduce the noise generated from the lateral grooves on tread shoulder.
3. NA-1 adopts uniquely asymmetric pattern design. The inside pattern stresses on drainage performance. Larger void ratio improves drainage performance on wet roads.
4. The outside pattern emphasizes on maneuverability. The larger pattern blocks on tread shoulder offers better cornering handling.
5. Noise prevention bar on the lateral grooves of outside tread shoulder block airflow in the grooves to reduce the derived noise.
6. Chamfered groove wall design scarifies the water film for getting better wet grip.



Series	Inch	Size	Load Index	Speed Index	Rim Width (Inch)	OD (mm)	SW (mm)	EU TIRE LABEL			
								RRC	Wet Grip	Noise Value (dB)	Noise Class
55'	16	205/55ZR16	91	W	6.5	632	214	C	B	70	2
	16	205/55R16	94(XL)	V	6.5	632	214	C	B	70	2
	16	195/55R16	87	V	6	620	201	E	B	70	2
	14	185/55R14	80	H	6	560	194	E	B	70	2
	13	165/55R13	70	H	5	512	170			N/A	
60'	19	175/60R19	86	Q	5	693	177	C	B	70	2
	16	215/60R16	99(XL)	H	6.5	664	221			N/A	
	16	205/60R16	96(XL)	H	6	652	209			N/A	
	15	225/60R15	96	V	6.5	651	228			N/A	
	15	195/60R15	88	H	6	615	201	E	B	70	2
	15	195/60R15	88	V	6	615	201			N/A	
65'	15	185/60R15	88(XL)	H	5.5	603	189	C	B	70	2
	14	185/60R14	82	H	5.5	578	189	C	B	70	2
	15	195/65R15	95(XL)	H	6	635	201			N/A	
15	195/65R15	91	H	6	635	201	C	B	70	2	

Series	Inch	Size	Load Index	Speed Index	Rim Width (Inch)	OD (mm)	SW (mm)	EU TIRE LABEL			
								RRC	Wet Grip	Noise Value (dB)	Noise Class
65'	15	185/65R15	92(XL)	H	5.5	621	189	C	B	70	2
	15	175/65R15	88(XL)	H	5	609	177			N/A	
	14	195/65R14	89	H	6	610	201			N/A	
	14	185/65R14	86	H	5.5	596	189	C	B	70	2
	14	175/65R14	86(XL)	T	5	584	177	C	B	70	2
70'	19	155/70R19	84	Q	4.5	701	157	C	B	70	2
	14	195/70R14	91	H	6	630	201	C	B	70	2
	14	185/70R14	88	H	5.5	616	189			N/A	
	14	175/70R14	88(XL)	H	5	602	177	C	B	70	2
	14	165/70R14	85(XL)	T	5	588	170			N/A	
80'	13	165/70R13	83(XL)	T	5	562	170			N/A	
	12	145/70R12	69	T	4.5	509	150	E	C	70	2
	15	165/80R15	87	T	4.5	645	165			N/A	
	14	175/80R14	88	H	5	636	177			N/A	

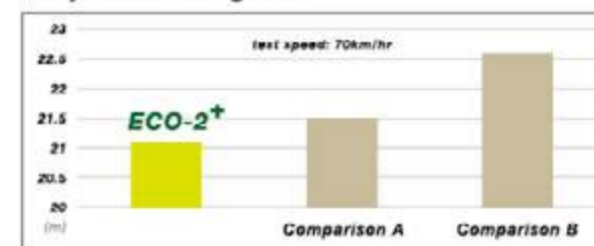
N/A = Values are not available at the time of publication.

ECO-2+

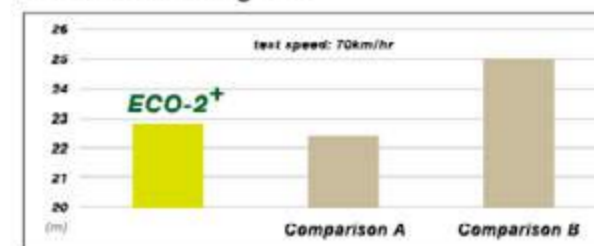


Compared to the average performance of three leading EU competitors, scopes of tests
 • Safety Wet: Aquaplaning(Straight-line), Braking, Lateral Grip, Handling
 • Safety Dry: Braking, Handling
 • Robustness and environmental: Rolling Noise, High Speed Advanced, Rolling Resistance.
 Tested by TÜV SÜD Automotive in 2013
 Tyre size: 205/55R16 94V; Test Vehicle: VW Golf TDI. Test locations: ATP Papenburg(D), Wachauring(A) TÜV SÜD Automotive(D); Report No. 76252274

• Dry Road Braking Test



• Wet Road Braking Test



1. Excellent dispersible silica and unique crosslinking agents reduce rolling resistance substantially as well as ebgabces wet grip.
2. The "Chain-End Nodification" technology used in syathetic rubber strngthens fuel saving and traction.
3. HA-oil-free formula for all sizes conforms with EU environmental protection laws.
4. Center sub grooves with shallower depth enhance vertical/lateral block stiffness to avert block deformation and further reduce energy consumption.
5. Shoulder groove bottom with big angle design retain shoulder block continuity, weaken block wriggling, and reduce energy consumption.
6. Two section lateral grooves design on shoulder profile prevent uneven tread wear and provides adequate traction.

7. Four circumferential grooves enhances drainage performance and safety on wet road.
8. Center rib design reinforces straight driving and handling performance.
9. Circumferential rib design on tread shoulder, with thin sipes instead of run-through lateral grooves, prevents groove resonance and reduce noise generated by run-through lateral grooves.



ECO-2+ Size List

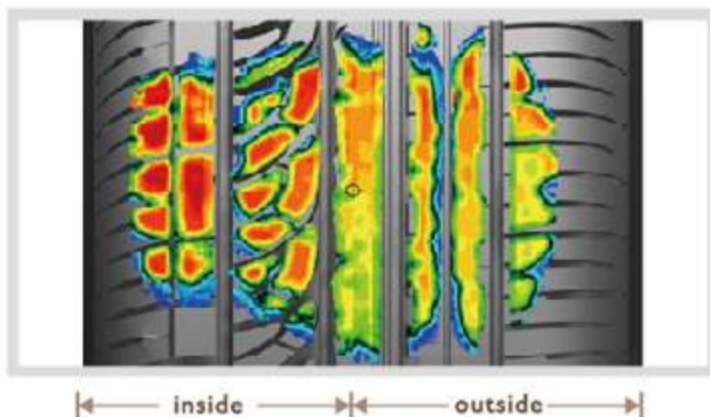
Series	Inch	Size	Load Index	Speed Index	Rim Width (Inch)	OD (mm)	SW (mm)	EU TIRE LABEL			
								RRC	Wet Grip	Noise Value (dB)	Noice Class
40'	18	245/40ZR18	97(XL)	Y	8.5	653	248	E	B	72	2
	18	245/40R18	92(XL)	H	8.5	653	248	E	B	72	2
	18	235/40ZR18	95(XL)	W	8.5	645	241	E	B	72	2
	18	235/40R18	95(XL)	H	8.5	645	241	E	B	72	2
	18	225/40ZR18	92(XL)	W	8	637	230	E	B	72	2
	18	225/40R18	92(XL)	H	8	637	230	E	B	72	2
45'	19	275/45ZR19	108(XL)	Y	9	731	273	C	B	73	2
	19	255/45ZR19	104(XL)	Y	8.5	713	255	C	B	73	2
	19	245/45ZR19	102(XL)	Y	8	703	238	E	B	72	2
	19	235/45ZR19	95	Y	8	695	236	E	B	71	2
	18	225/45ZR18	95(XL)	W	7.5	659	225	E	B	72	2
	18	225/45R18	95(XL)	H	7.5	659	225	E	B	72	2
	18	215/45ZR18	93(XL)	W	7	651	213	E	B	72	2
	18	215/45R18	93(XL)	H	7	651	213	E	B	72	2
	17	225/45ZR17	94(XL)	Y	7.5	634	225	E	B	72	2
	17	225/45R17	94(XL)	W	7.5	634	225	E	B	72	2
	17	225/45R17	94(XL)	V	7.5	634	225	E	B	72	2
	17	215/45R17	91(XL)	V	7	626	213	E	B	72	2
50'	16	205/45ZR16	87(XL)	W	7	590	206	E	B	72	2
	19	235/50ZR19	99	W	7.5	719	245	E	B	71	2
	18	245/50ZR18	100	W	7.5	703	253	E	B	71	2
	18	245/50R18	100	H	7.5	703	253	E	B	71	2
	18	235/50ZR18	101(XL)	Y	7.5	693	245	E	B	72	2
	18	235/50R18	101(XL)	H	7.5	693	245	E	B	72	2
55'	15	165/50R15	72	V	5	547	170			N/A	
	19	235/55R19	105(XL)	V	7.5	741	245	E	B	72	2
	18	235/55R18	104(XL)	V	7.5	715	245	C	B	72	2
	17	215/55R17	98(XL)	V	7	668	226	E	B	72	2
	16	205/55R16	91	V	6.5	632	214	E	B	71	2
	16	205/55R16	94(XL)	V	6.5	632	214	E	B	72	2
	16	195/55R16	87	V	6	620	201	E	B	71	2
	16	185/55R16	87(XL)	V	6	610	194	E	B	71	2
	15	185/55R15	86(XL)	V	6	585	194	E	B	71	2
	14	165/55R14	72	V	5	538	170			N/A	
60'	18	235/60R18	107(XL)	V	7	739	240	E	B	72	2
	17	225/60R17	99	H	6.5	702	228	E	B	71	2
	17	215/60R17	96	H	6.5	690	221	E	B	71	2
	16	225/60R16	98	V	6.5	676	228	E	B	71	2
	16	215/60R16	99(XL)	V	6.5	664	221	E	B	72	2
	16	205/60R16	96(XL)	H	6	652	209	E	B	72	2
	16	205/60R16	96(XL)	V	6	652	209	E	B	72	2
	16	185/60R16	86	H	5.5	628	189	E	B	70	2
	15	165/60R15	77	H	5	579	170	E	B	70	2
	13	155/60R13	70	H	4.5	516	157			N/A	
65'	13	135/60R13	62	T	4	492	138	F	C	70	2
	12	165/60R12	71	H	5	503	170	F	B	70	2
	17	225/65R17	102	V	6.5	724	228	E	B	71	2
	16	195/65R16	92	V	6	660	201	E	B	71	2
	15	205/65R15	95	H	6	647	209	E	B	71	2
	15	195/65R15	91	H	6	635	201	E	B	71	2
70'	15	185/65R15	88	H	5.5	621	189	E	B	70	2
	15	175/65R15	88(XL)	H	5	609	177	E	B	71	2
	13	145/70R13	71	T	4.5	534	150	E	B	70	2
	13	135/80R13	70	T	3.5	546	133	E	B	70	2

AS-1



1. In order to get the better drainage efficiency, two straight broad grooves are applied on the outside. To enhance the safety on the wet ground, the stream in the middle groove is used to accumulate the water with the assistance of fine sipe bar to divert the water for safer drive.
2. To increase cornering force on the outside, the shoulder high rigidity pattern to strengthen cornering force and enhance the steering ability.
3. Unique straight grooves on the shoulder make the whole tread more rigid and prevent it from irregular wear.
4. The evenly thin sipes reduce the road impact and enhance the comfort when driving.
5. In order to get the best silent features, the tread pattern is using two-in-one and multi-pitch design.

Inside and outside pattern allocation adopts 50% v.s 50% width design.



On the outside tread, the high-stiffness curved pattern increases the cornering force and enhances the steering ability. Two straight broad grooves and the sipe bars added in the middle groove accumulate the water for better drainage efficiency and driving safety in wet conditions.

On the inside tread, the evenly thin sipe design reduces the road impact and enhances driving comfort. Unique straight groove on the tread shoulder not only normalizes the stiffness and contact patch, but also prevents from irregular wear.

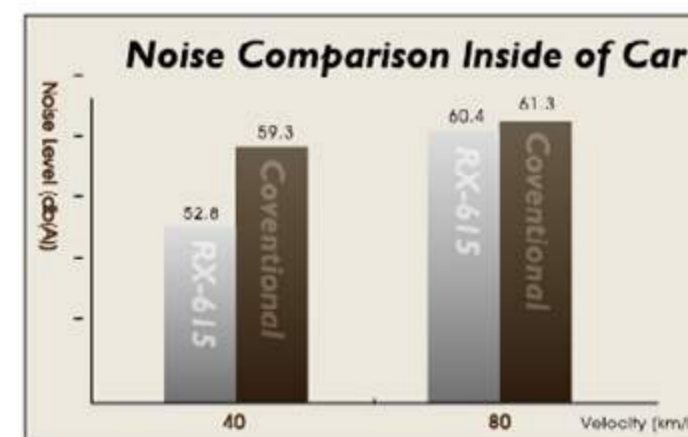
Unique silica formula increases the grip on wet ground and reduces rolling resistance.

AS-1 Size List

Series	Inch	Size	Load Index	Speed Index	Rim Width (Inch)	OD (mm)	SW (mm)	EU TIRE LABEL				
								RNC	Wet Grip	Noise Value (dB)	Noise Class	
30'	21	285/30ZR21	100(XL)	Y	10	705	290	E	C	74	2	
	21	255/30ZR21	93(XL)	Y	9	687	260	E	C	73	2	
	21	295/35ZR21	107(XL)	Y	10.5	739	301	E	C	74	2	
	21	245/35ZR21	96(XL)	Y	8.5	705	248	E	C	71	2	
	20	315/35ZR20	110(XL)	Y	11	728	320	E	C	74	2	
35'	18	255/35ZR18	94(XL)	W	9	635	260	E	C	71	2	
	18	255/35R18	94(XL)	H	9	635	260	E	C	71	2	
	18	225/35R18	87(XL)	H	8	615	230	E	C	71	2	
	18	215/35R18	84(XL)	H	7.5	607	218	F	C	71	2	
	18	205/35R18	81(XL)	H	7.5	601	212	F	C	71	2	
	18	165/35R18	82(XL)	V	6	573	170	F	C	71	2	
	20	275/40ZR20	106(XL)	Y	9.5	728	278	E	C	74	3	
	20	265/40ZR20	104(XL)	Y	9.5	720	271	E	C	74	3	
	19	255/40ZR19	100(XL)	Y	9	687	260	E	C	71	2	
	19	235/40ZR19	96(XL)	Y	8.5	671	241	E	C	71	2	
40'	18	275/40ZR18	99	W	9.5	677	278	E	C	72	2	
	18	275/40R18	99	H	9.5	677	278	E	C	74	3	
	18	265/40ZR18	101(XL)	Y	9.5	669	271	E	C	72	2	
	18	265/40R18	101(XL)	H	9.5	669	271	E	C	74	3	
	18	255/40ZR18	99(XL)	Y	9	661	260	E	C	71	2	
	18	255/40R18	99(XL)	H	9	661	260	E	C	71	2	
	18	245/40ZR18	97(XL)	Y	8.5	653	248	E	C	71	2	
	18	245/40R18	97(XL)	H	8.5	653	248	E	C	71	2	
	18	235/40ZR18	95(XL)	Y	8.5	645	241	E	C	71	2	
	18	235/40R18	95(XL)	H	8.5	645	241	E	C	71	2	
	18	225/40ZR18	92(XL)	Y	8	637	230	E	C	71	2	
	18	225/40R18	92(XL)	H	8	637	230	E	C	71	2	
	18	225/40R18	92(XL)	V	8	637	230	E	C	71	2	
	18	215/40R18	89(XL)	H	7.5	629	218	E	C	71	2	
	18	205/40ZR18	86(XL)	W	7.5	621	212	E	C	71	2	
45'	18	205/40R18	86(XL)	H	7.5	621	212	E	C	71	2	
	17	195/40ZR17	81(XL)	W	7	588	200	F	C	71	2	
	17	195/40R17	81(XL)	H	7	588	200	F	C	71	2	
	20	275/45ZR20	106	Y	9	756	273	E	C	72	2	
	20	255/45ZR20	105(XL)	W	8.5	738	255	E	C	71	2	
	19	225/45ZR19	96(XL)	W	7.5	685	225	E	C	71	2	
	18	255/45ZR18	103(XL)	Y	8.5	687	255	E	C	71	2	
	18	245/45ZR18	100(XL)	W	8	677	243	E	C	71	2	
	18	245/45R18	100(XL)	H	8	677	243	E	C	71	2	
	18	235/45ZR18	98(XL)	W	8	669	236	E	C	71	2	
50'	18	235/45R18	98(XL)	H	8	669	236	E	C	71	2	
	18	225/45ZR18	95(XL)	W	7.5	659	225	E	C	71	2	
	18	225/45R18	95(XL)	H	7.5	659	225	E	C	71	2	
	18	215/45R18	93(XL)	H	7	651	213	E	C	71	2	
	17	225/45ZR17	94(XL)	W	7.5	634	225	E	C	71	2	
	55'	17	215/45R17	91(XL)	V	7	626	213	E	C	71	2
		17	195/45R17	85(XL)	H	6.5	608	195	F	C	71	2
		17	165/45R17	75(XL)	V	5.5	580	165	F	C	71	2
		15	165/45R15	72(XL)	V	5.5	529	165	F	C	71	2
		18	245/50R18	104(XL)	T	7.5	703	253	E	C	71	2
18		235/50ZR18	97	W	7.5	693	245	E	C	71	2	
18		235/50R18	97	H	7.5	693	245	E	C	71	2	
18		225/50R18	96	H	7	683	233	E	C	71	2	
17		235/50R17	96	V	7.5	668	245	E	C	71	2	
17		225/50R17	94	V	7	658	233	E	C	71	2	
60'	17	215/50R17	91	V	7	648	226	E	C	71	2	
	16	165/50R16	75	V	5	572	170	F	C	71	3	
	13	175/50R13	72	V	5.5	506	182	F	C	71	3	
	19	225/55ZR19	99	Y	7	731	233	E	C	71	2	
	17	225/55R17	101(XL)	V	7	680	233	E	C	71	2	
	17	215/55R17	94	V	7	668	226	E	C	71	2	
	17	205/55R17	91	V	6.5	658	214	E	C	71	2	
	16	205/55R16	91	V	6.5	632	214	E	C	71	2	
	16	195/55R16	87	V	6	620	201	E	C	71	2	
	15	195/55R15	85	V	6	595	201	F	C	71	2	
65'	15	175/55R15	77	V	5.5	573	182	F	C	70	2	
	15	165/55R15	75	V	5	563	170	F	C	71	3	
	14	165/55R14	72	V	5	538	170	F	C	71	3	
	14	155/55R14	73(XL)	V	5	526	162	F	C	70	2	
	14	155/55R14	69	V	5	526	162		N/A			
	18	265/60R18	110	H	8	775	272	E	C	74	3	
	18	225/60ZR18	100	W	6.5	727	228	E	C	71	2	
	18	225/60R18	100	H	6.5	727	228	E	C	71	2	
	17	215/60R17	96	H	6.5	690	221	E	C	71	2	
	16	195/60R16	89	H	6	640	201	E	C	71	2	
70'	16	185/60R16	90(XL)	H	5.5	628	189	E	C	71	2	
	15	195/60R15	88	H	6	615	201	E	C	71	2	
	15	175/60R15	81	H	5	591	177	F	C	71	3	
	15	155/60R15	74	V	4.5	567	157	F	C	70	2	
	14	165/60R14	75	H	5	554	170	F	C	70	2	
	13	165/60R13	77(XL)	H	5	528	170	F	C	71	2	
	16	215/65R16	98	H	6.5	686	221	E	C	71	2	
	16	205/65R16	95	H	6	672	209	E	C	71	2	
	15	205/65R15	95	H	6	647	209	E	C	71	2	
	15	165/65R15	81	T	5	595	170	F	C	71	3	
80'	15	145/65R15	72	V	4.5	569	150	F	C	71	3	
	14	155/65R14	75	V	4.5	558	157	F	C	70	2	
	15	135/70R15	70	T	4	567	140	F	C	70	2	
	12	135/80R12	68	S	3.5	521	133	F	C	70	2	

N/A = Values are not available at the time of publication.

RX-615



Noise Comparison between RX-615 and Conventional tires.

RX-615 uses computerized multi-pitch simulation technology as well as the multi-sipe design on tread pattern to reduce and restrain noise generation. The sub-groove on the tread shoulders can reduce the pattern stiffness to prevent from irregular wear.

RX-615 Size List

Series	Inch	Size	Load Index	Speed Index	Rim Width (Inch)	OD (mm)	SW (mm)	EU TIRE LABEL			
								RRC	Wet Grip	Noise Value (dB)	Noise Class
45'	17	215/45R17	91(XL)	V	7	626	213	E	C	69	1
	16	205/45R16	87(XL)	V	7	590	206	E	C	69	1
50'	16	225/50R16	92	V	7	632	233	E	C	69	2
	15	205/50R15	86	V	6.5	587	214	E	C	69	2
	15	195/50R15	82	V	6	577	201	F	C	69	2
55'	16	225/55ZR16	95	W	7	654	233	E	C	69	2
	16	215/55R16	93	V	7	642	226	E	C	69	2
	16	205/55R16	94(XL)	V	6.5	632	214	E	C	69	1
	16	185/55R16	83	V	6	610	194	E	C	69	2
	15	195/55R15	85	V	6	595	201	E	C	69	2
	14	185/55R14	80	H	6	560	194	F	C	69	2
60'	14	185/55R14	80	V	6	560	194	F	C	69	2
	16	225/60R16	90	V	6.5	676	228	E	C	69	2
	16	215/60R16	99(XL)	V	6.5	664	221	E	C	69	1
	16	205/60R16	96(XL)	V	6	652	209	E	C	69	1
	15	225/60R15	96	V	6.5	651	228	E	C	69	2
	15	215/60R15	94	V	6.5	639	221	E	C	69	2
	15	215/60R15	94	H	6.5	639	221	E	C	69	2
	15	205/60R15	91	V	6	627	209	E	C	69	2
	15	205/60R15	91	H	6	627	209	E	C	69	2
	15	195/60R15	88	H	6	615	201			N/A	
	15	195/60R15	88	V	6	615	201	E	C	69	2
	14	215/60R14	91	H	6.5	614	221	E	C	69	2
	14	205/60R14	88	H	6	602	209	F	C	69	2
	14	195/60R14	86	H	6	590	201	E	C	69	2
65'	14	185/60R14	82	H	5.5	578	189	F	C	69	2
	13	205/60R13	86	H	6	576	209	E	C	69	2
	13	185/60R13	80	H	5.5	552	189	F	C	69	2
	16	215/65R16	98	V	6.5	686	221	E	C	69	2
	16	205/65R16	95	V	6	672	209	E	C	69	2
	15	215/65R15	96	V	6.5	661	221	E	C	69	2
	15	215/65R15	96	H	6.5	661	221	E	C	69	2
	15	205/65R15	95	H	6	647	209	E	C	69	2
	15	205/65R15	94	V	6	647	209	E	C	69	2
	15	195/65R15	91	H	6	635	201	E	C	69	2
	15	195/65R15	91	V	6	635	201	E	C	69	2
	15	185/65R15	88	H	5.5	621	189	E	C	69	2
	14	195/65R14	89	H	6	610	201	E	C	69	2
	14	185/65R14	86	H	5.5	596	189	E	C	69	2
14	175/65R14	82	H	5	584	177	F	C	69	2	
14	155/65R14	75(WR)	H	4.5	558	157	F	C	69	2	
13	155/65R13	73	T	4.5	532	157	F	C	69	2	
70'	14	205/70R14	95	H	6	644	209	E	C	69	2
	14	195/70R14	91	H	6	630	201	E	C	69	2
	14	185/70R14	88	H	5.5	616	189	E	C	69	2
	14	175/70R14	84	H	5	602	177	E	C	69	2
	13	185/70R13	86	H	5.5	590	189	E	C	69	2
	13	175/70R13	82	H	5	576	177	F	C	69	2
	13	165/70R13	79	T	5	562	170	F	C	69	2
80'	13	155/70R13	75	T	4.5	548	157	F	C	69	2
	13	145/70R13	71	T	4.5	534	150	F	C	69	2
	13	145/80R13	75	S	4	562	145	F	C	69	2
	12	145/80R12	74	S	4	537	145	F	C	69	2

N/A = Values are not available at the time of publication.

- Four straight broad grooves offer drainage efficiency and upgrade the safety on wet ground
- The sub-straight grooves on the shoulder reduce the rigidity and prevent uneven wear happens.
- Multi sipes design reduces the rigidity of the tread and enhances the driving comfort.
- The lateral groove design curbs the generation of pattern noise.
- The pitch is designed with 5-pitch computer simulation to provide quiet and luxurious driving experience.



XR-611



1. Four straight grooves enhance the drainage efficiency and the maneuverability on wet ground.
2. Special block pattern design enforces the maneuverability.
3. The gradually broadened grooves expedite drainage efficiency.
4. Pitch pattern designed by computer-simulated calculation reduces the noise generation.

N-729



1. Four-Straight grooves ensure driving safety on wet roads.
2. Small sipes allocated with large block reduce the impact caused from the road and reduce tire noise generation created from tread pattern.
3. Multi pitches pattern designed by computer simulation reduces tire noise generation.
4. Special tread compound design increases tire mileage to reach economical and valuable tire.

XR-611 Size List

Series	Inch	Size	Load Index	Speed Index	Rim Width (Inch)	OD (mm)	SW (mm)	EU TIRE LABEL			
								RRC	Wet Grip	Noise Value (dB)	Noise Class
45'	18	215/45R18	93(XL)	V	7	651	213	E	C	71	2
	18	225/50R18	95	V	7	683	233	E	C	71	2
	18	215/50R18	92	V	7	673	226	F	C	71	2
50'	17	225/50R17	94	V	7	658	233	E	C	71	2
	17	215/50R17	91	V	7	648	226	E	C	71	2
	16	225/50R16	92	V	7	632	233	E	C	71	2
55'	15	225/50R15	91	V	7	607	233	E	C	71	2
	15	205/50R15	86	V	6.5	587	214	E	C	71	2
	17	215/55R17	94	V	7	668	226	E	C	71	2
60'	16	195/55R16	87	V	6	620	201	E	C	71	2
	14	185/55R14	80	H	6	560	194	F	C	70	2
	14	165/55R14	72	V	5	538	170	F	C	71	3
60'	13	165/65R13	70	H	5	512	170	F	C	70	2
	17	225/60R17	99	V	6.5	702	228	E	C	71	2
	17	215/60R17	96	H	6.5	690	221	E	C	71	2
	16	235/60R16	100	V	7	688	240	E	C	71	2
	16	225/60R16	98	V	6.5	676	228	E	C	71	2
	16	215/60R16	99(XL)	H	6.5	664	221	E	C	71	2
	16	205/60R16	96(XL)	H	6	652	209	E	C	71	2
	16	205/60R16	96(XL)	V	6	652	209	E	C	71	2
	16	175/60R16	82	H	5	616	177	E	C	71	3
	15	235/60R15	98	S	7	663	240	E	C	71	2
	15	225/60R15	96	V	6.5	651	228	E	C	71	2
	15	215/60R15	94	H	6.5	639	221	E	C	71	2
	15	205/60R15	91	V	6	627	209	E	C	71	2
	15	205/60R15	91	H	6	627	209	E	C	71	2
	15	195/60R15	88	H	6	615	201	E	C	71	2
15	195/60R15	88	V	6	615	201	E	C	71	2	

Series	Inch	Size	Load Index	Speed Index	Rim Width (Inch)	OD (mm)	SW (mm)	EU TIRE LABEL			
								RRC	Wet Grip	Noise Value (dB)	Noise Class
60'	15	185/60R15	88(XL)	H	5.5	603	189	E	C	71	2
	14	205/60R14	88	H	6	602	209	E	C	71	2
	14	195/60R14	86	H	6	590	201	E	C	71	2
60'	14	185/60R14	82	V	5.5	578	189	N/A			
	14	185/60R14	82	H	5.5	578	189	E	C	71	3
	14	175/60R14	79	H	5	566	177	F	C	71	3
65'	13	205/60R13	86	H	6	576	209	F	C	71	2
	13	185/60R13	80	H	5.5	552	189	F	C	71	3
	13	175/60R13	77	H	5	540	177	F	C	71	3
65'	17	215/65R17	99	H	6.5	712	221	E	C	71	2
	15	215/65R15	96	H	6.5	661	221	E	C	71	2
	15	205/65R15	95	V	6	647	209	E	C	71	2
65'	15	205/65R15	95	H	6	647	209	E	C	71	2
	15	195/65R15	91	V	6	635	201	E	C	71	2
	15	195/65R15	95(XL)	H	6	635	201	E	C	71	2
65'	15	195/65R15	91	H	6	635	201	E	C	71	2
	15	185/65R15	92(XL)	H	5.5	621	189	E	C	71	2
	15	175/65R15	88(XL)	H	5	609	177	E	C	71	2
70'	14	195/65R14	89	H	6	610	201	E	C	71	2
	14	185/65R14	86	H	5.5	596	189	E	C	71	3
	14	175/65R14	82	H	5	584	177	E	C	70	2
70'	14	165/65R14	79	H	5	570	170	F	C	71	3
	13	165/65R13	77	H	5	544	170	F	C	70	2
	13	185/70R13	90(XL)	H	5.5	590	189	E	C	71	2
80'	13	175/70R13	86(XL)	H	5	576	177	E	C	71	2
	12	155/70R12	73	T	4.5	523	157	F	C	70	2
	15	175/80R15	90	S	5	660	177	E	C	70	2

N/A = Values are not available at the time of publication.

N-729 Size List

Series	Inch	Size	Load Index	Speed Index	Rim Width (Inch)	OD (mm)	SW (mm)	EU TIRE LABEL			
								RRC	Wet Grip	Noise Value (dB)	Noise Class
50'	13	215/50R13	85(WL)	T	7	546	226	N/A			
	15	195/60R15	88	H	6	615	201	N/A			
60'	15	195/60R15	88	H	6	615	201	N/A			
	14	195/60R14	86	H	6	590	201	N/A			
	14	185/60R14	82	H	5.5	578	189	N/A			
65'	15	195/65R15	91	H	6	635	201	N/A			
	15	185/65R15	88	H	5.5	621	189	N/A			
	14	195/65R14	89(WL)	T	6	610	201	N/A			
65'	14	195/65R14	89	H	6	610	201	N/A			
	14	185/65R14	86	H	5.5	596	189	N/A			
	14	185/65R14	86	H	5.5	596	189	N/A			
65'	14	185/65R14	86(WL)	T	5.5	596	189	N/A			
	14	175/65R14	82	H	5	584	177	N/A			
	13	165/65R13	77	H	5	544	170	N/A			
70'	14	195/70R14	95(WL)	T	6	630	201	N/A			
	14	185/70R14	88(WL)	T	5.5	616	189	N/A			
	14	185/70R14	88	H	5.5	616	189	N/A			
70'	14	175/70R14	84	H	5	602	177	N/A			
	14	175/70R14	84(WL)	T	5	602	177	N/A			
	13	185/70R13	86(WL)	T	5.5	590	189	N/A			
70'	13	175/70R13	82(WL)	T	5	576	177	N/A			
	13	165/70R13	79(WL)	T	5	562	170	N/A			
	13	165/70R13	79	H	5	562	170	N/A			

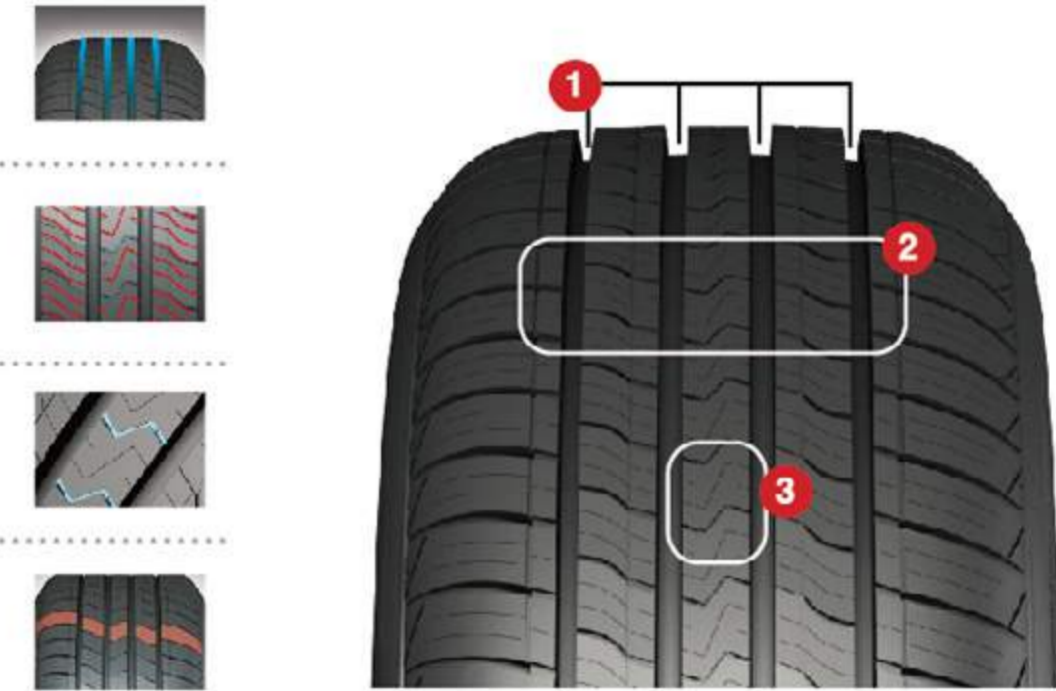
N/A = Values are not available at the time of publication.

SP-9

NEW



1. Four straight wide grooves enhance tire drainage efficiency and maneuverability on wet road condition.
2. The optimized evenly thin sipes reduce road impact and improve the comfort when driving.
3. Center rib design offers steady handling.
4. The 5 pitches computer simulation technology decreases noise at high speed.



SP-9 Size List

Series	Inch	Size	Load Index	Speed Index	Rim Width (Inch)	OD (mm)	SW (mm)	EU TIRE LABEL				
								RRC	Wet Grip	Noise Value (dB)	Noise Class	
45'	21	265/45R21	104	V	9	771	266			N/A		
	20	275/45R20	110(XL)	V	9	756	273			N/A		
	20	265/45R20	108(XL)	V	9	746	266			N/A		
50'	20	285/50R20	116(XL)	V	9	794	297	C	B	75	2	
	20	265/50R20	111(XL)	V	8.5	774	277			N/A		
	20	255/50R20	109(XL)	V	8	764	265			N/A		
	20	245/50R20	102	V	7.5	754	253	E	B	71	2	
	19	265/50R19	110(XL)	H	8.5	749	277			N/A		
55'	19	255/50R19	107(XL)	V	8	739	265			N/A		
	18	235/50R18	101(XL)	V	7.5	693	245	E	B	72	2	
	20	235/55R20	105(XL)	V	7.5	766	245			N/A		
	19	245/55R19	107(XL)	H	7.5	753	253	E	B	72	2	
	19	235/55R19	105(XL)	V	7.5	741	245			N/A		
	18	255/55R18	109(XL)	V	8	737	265	E	B	73	2	
60'	18	235/55R18	104(XL)	V	7.5	715	245	E	B	72	2	
	17	235/55R17	103(XL)	V	7.5	690	245	E	B	72	2	
	17	235/55R17	99	V	7.5	690	245			N/A		
60'	19	255/60R19	109	V	7.5	789	260			N/A		
	18	285/60R18	116	H	8.5	799	292			N/A		

Series	Inch	Size	Load Index	Speed Index	Rim Width (Inch)	OD (mm)	SW (mm)	EU TIRE LABEL				
								RRC	Wet Grip	Noise Value (dB)	Noise Class	
60'	18	265/60R18	110	H	8	775	272	E	B	72	2	
	18	245/60R18	105	H	7	751	248			N/A		
	18	235/60R18	107(XL)	V	7	739	240	E	B	72	2	
	17	255/60R17	110(XL)	V	7.5	738	260			N/A		
	17	235/60R17	102	V	7	714	240	E	B	71	2	
65'	18	275/65R18	116	H	8	815	279			N/A		
	18	265/65R18	114	H	8	801	272			N/A		
	18	255/65R18	111	H	7.5	789	260			N/A		
	18	235/65R18	106	H	7	763	240			N/A		
	17	245/65R17	111(XL)	H	7	750	248	E	B	72	2	
	17	235/65R17	108(XL)	V	7	738	240	E	B	72	2	
70'	17	225/65R17	102	V	6.5	724	228	E	B	71	2	
	15	195/65R15	91	H	6	635	201			N/A		
	18	265/70R18	116	H	8	829	272			N/A		
	18	255/70R18	113	H	7.5	815	260			N/A		
	17	265/70R17	115	H	8	804	272	C	B	72	2	
	17	245/70R17	110	H	7	776	248	E	B	71	2	
	16	235/70R16	106	H	7	736	240	E	B	71	2	
16	215/70R16	100	H	6.5	708	221	E	B	71	2		

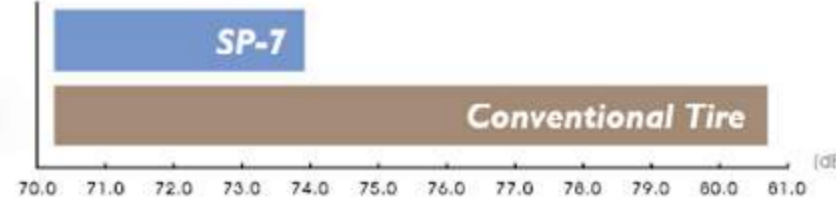
N/A = Values are not available at the time of publication.

SP-7



1. Two straight broad grooves & arc sub-grooves design can enhance drainage efficiency and prevent from hydroplaning.
2. Noise prevention bar on the shoulder groove can reduce the pattern noise.
3. The blocks with sipes make the block stiffness feasible, and improve the premature tire wear and riding comfort.

SP-7 Noise Test



FT-4



1. Optimized profile design increases the tire rigidity and driving stability.
2. The tread surface is enlarged and the shoulder groove is reduced to give better maneuverability.
3. 5 pitches block design is adopted to reduce the noise generation.
4. Noise prevention bar is created on the shoulder to prevent premature wear and to reduce the road noise generation.

SP-7 Size List

Series	Inch	Size	Load Index	Speed Index	Rim Width (Inch)	OD (mm)	SW (mm)	EU TIRE LABEL			
								RRC	Wet Grip	Noise Value (dB)	Noise Class
30"	22	295/30ZR22	103(XL)	Y	10.5	737	301	E	B	72	1
	22	255/30R22	95(XL)	V	9	713	260	E	B	72	2
	24	305/35R24	112(XL)	V	11	824	313	E	B	72	1
35"	24	295/35R24	110(XL)	V	10.5	816	301	F	R	72	1
	22	295/35R22	108(XL)	V	10.5	765	301	N/A			
	22	265/35R22	102(XL)	V	9.5	745	271	E	B	72	2
40"	24	295/40R24	114(XL)	V	10.5	846	301	E	B	72	1
	24	285/40R24	112(XL)	V	10	838	290	E	B	72	1
	22	305/40R22	114(XL)	V	11	803	313	E	B	72	1
	22	285/40R22	110(XL)	V	10	787	290	E	B	72	1
	20	295/40ZR20	110(XL)	Y	10.5	744	301	E	B	72	1
	20	275/40ZR20	106(XL)	W	9.5	728	278	E	B	72	2
45"	20	275/40R20	106(XL)	H	9.5	728	278	E	B	72	2
	22	305/45R22	118(XL)	V	10	833	303	E	B	72	1
	22	285/45R22	114(XL)	V	9.5	815	285	E	B	72	1
	20	295/45R20	114(XL)	H	10	774	296	E	B	72	1
	20	275/45R20	110(XL)	H	9	756	273	E	B	72	2
	20	275/45R20	110(XL)	V	9	756	273	E	B	72	2
50"	20	245/45R20	99	V	8	728	243	E	B	71	2
	19	285/45ZR19	111(XL)	W	9.5	739	285	E	B	72	1
	20	305/50R20	120(XL)	H	9.5	814	316	E	B	72	1
	20	285/50R20	116(XL)	V	9	794	297	E	B	72	1
	20	255/50ZR20	109(XL)	Y	8	764	265	E	B	73	2
	19	255/50ZR19	107(XL)	W	8	739	265	E	B	72	2
55"	18	225/50R18	95	V	7	683	233	E	B	72	3
	15	P295/50R15	108	H	0.5	677	297	E	B	72	2
	15	P295/50R15	108(OW)	S	9.5	677	309	E	B	72	2
	20	275/55R20	117(XL)	H	8.5	810	284	E	B	72	2
	19	275/55R19	111	V	8.5	785	284	E	B	72	2

Series	Inch	Size	Load Index	Speed Index	Rim Width (Inch)	OD (mm)	SW (mm)	EU TIRE LABEL			
								RRC	Wet Grip	Noise Value (dB)	Noise Class
55"	19	235/55R19	101	V	7.5	741	245	E	B	71	2
	19	225/55R19	99	V	7	731	233	E	B	71	2
	18	255/55ZR18	109(XL)	W	8	737	265	E	B	72	2
	18	235/55R18	104(XL)	V	7.5	715	245	E	B	72	2
	18	225/55R18	98	V	7	705	233	E	B	71	2
	18	215/55R18	99(XL)	V	7	693	228	E	B	72	2
60"	20	275/60R20	119(XL)	H	8	838	279	E	B	72	2
	18	255/60R18	112(XL)	V	7.5	763	260	E	B	73	2
	18	245/60R18	105	H	7	751	248	E	B	72	3
	18	235/60R18	107(XL)	V	7	739	240	E	B	72	2
	17	275/60R17	110	T	8	762	279	E	B	72	2
	17	255/60R17	110(XL)	V	7.5	738	260	E	B	72	2
65"	17	225/60R17	99	H	6.5	702	228	E	B	72	3
	16	275/60R16	109	H	8	736	279	E	B	72	2
	16	275/60R16	109(OW)	H	8	736	279	N/A			
	15	275/60R15	107	H	8	711	279	F	B	72	2
	15	275/60R15	107(OW)	H	8	711	279	N/A			
	15	255/60R15	102	H	7.5	687	200	E	B	72	2
70"	15	255/60R15	102(OW)	H	7.5	687	260	N/A			
	18	235/65R18	106	S	7	763	240	F	R	71	2
	18	225/65R18	103	H	6.5	745	224	E	C	71	2
	17	265/65R17	112	H	8	776	272	E	B	72	2
	17	255/65R17	110	H	7.5	764	260	E	B	72	2
	17	235/65R17	108(XL)	V	7	738	240	F	B	72	2
75"	17	225/65R17	102	V	6.5	724	228	E	B	72	3
	16	215/65R16	102(XL)	V	6.5	686	221	E	D	72	2
	17	265/70R17	115	H	8	804	272	E	B	72	2
	17	235/70R17	111(XL)	H	7	762	240	F	B	72	2
	16	265/70R16	112	S	8	778	272	E	B	72	2
	15	235/70R15	103	T	7	711	240	E	B	71	2

N/A = Values are not available at the time of publication.

FT-4 Size List

Series	Inch	Size	Load Index	Speed Index	Rim Width (Inch)	OD (mm)	SW (mm)	EU TIRE LABEL			
								RRC	Wet Grip	Noise Value (dB)	Noise Class
55"	18	225/55R18	98	V	7	705	233	N/A			
	18	235/60R18	107(XL)	V	7	739	240	N/A			
60"	18	225/60R18	100	H	6.5	727	228	F	E	71	2
	16	235/60R16	104(XL)	H	7	688	240	N/A			
	16	235/60R16	100	H	7	688	240	F	E	72	3
65"	17	245/65R17	111(XL)	H	7	750	248	E	E	72	2
	17	225/65R17	102	H	6.5	724	228	F	E	71	2
	16	255/65R16	109	H	7.5	738	260	E	E	72	2
	16	235/65R16	107(XL)	V	7	712	240	N/A			
	16	215/65R16	98	H	6.5	686	221	F	E	72	3
	16	275/70R16	114	H	8	792	279	E	E	72	2
70"	16	265/70R16	112	H	8	778	272	E	E	72	2
	16	255/70R16	111	H	7.5	764	260	E	E	72	2
	16	245/70R16	111(XL)	H	7	750	248	E	E	72	2
	16	245/70R16	107	H	7	750	248	N/A			
	16	235/70R16	106	S	7	736	240	N/A			
	16	235/70R16	109(XL)	H	7	736	240	E	E	72	2
75"	16	235/70R16	106	H	7	736	240	F	E	71	2
	16	215/70R16	100	H	6.5	708	221	F	E	72	3
	15	265/70R15	112	H	8	753	272	F	E	72	2
	15	205/70R15	96	H	6	669	209	F	E	71	2
	15	195/70R15	92	H	6	655	201	F	E	71	2

N/A = Values are not available at the time of publication.

AT-5

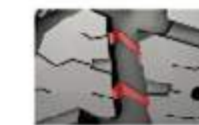
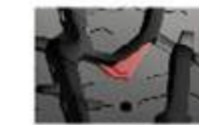
NEW



Fits the following applications:



1. Zigzag grooves can provide friction on all terrains including muddy, gravel or snowy roads, and also enhance the tire driving ability on rugged and rough roads.
2. Interlocking central blocks design can increase the tire stability on rugged and tough roads.
3. Stepped wall design on central sub grooves expel the gravel by the step edges while tire rolling. It also prevents the lodged stone from cutting the blocks.
4. The prominent bars on the bottom and wall of the grooves on tread shoulder discharge the clogs and stones lodged in the main grooves.
5. Connection bars design between blocks reinforce blockstiffness and prevent irregular tire wear.
6. Tread compound with high level of silica enhances driving stability on snowy roads.



AT-5 Size List

Series	Inch	Size	Load Index	Speed Index	Rim Width (Inch)	OD (mm)	SW (mm)	EU TIRE LABEL			
								RRC	Wet Grip	Noise Value (dB)	Noise Class
55'	20	275/55R20	117(XL)	T	8.5	810	284				N/A
60'	18	265/60R18	110	T	8	775	272				N/A
65'	17	245/65R17	111(OW)	T	7	750	248				N/A
	18	265/70R18	114(OW)	S	8	829	272				N/A
	17	265/70R17	115(OW)	T	8	804	272				N/A
70'	17	245/70R17	112(OW)	T	7	776	248				N/A
	16	265/70R16	112(OW)	T	8	778	272				N/A
	16	255/70R16	112(OW)	S	7.5	764	260				N/A
	15	265/70R15	112(OW)	S	8	753	272				N/A
75'	15	235/75R15	109(OW)	T	6.5	733	235				N/A

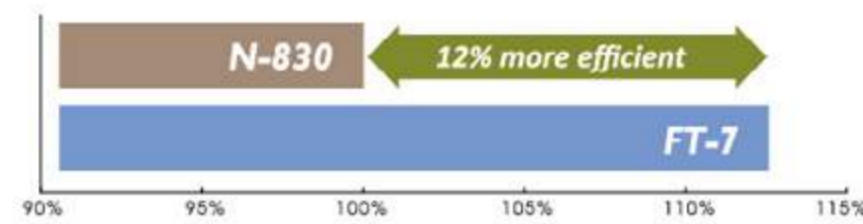
Series	Inch	Size	Load Index	Speed Index	Rim Width (Inch)	OD (mm)	SW (mm)	EU TIRE LABEL			
								RRC	Wet Grip	Noise Value (dB)	Noise Class
4WD	* 20	LT275/65R20	126/123(OW)	S	8	866	279				N/A
	* 18	LT275/70R18	125/122(OW)	R	8	843	279				N/A
	17	LT285/70R17	121/118(OW)	S	8.5	832	292				N/A
	* 17	LT265/70R17	121/118(OW)	S	8	804	272				N/A
	* 17	LT265/65R17	120/117(OW)	S	8	776	272				N/A
	* 17	LT245/75R17	121/118(OW)	S	7	800	248				N/A
	* 17	LT245/70R17	119/116(OW)	S	7	776	248				N/A
	* 17	LT235/80R17	120/117(OW)	R	6.5	808	235				N/A
	* 16	LT265/75R16	123/120(OW)	S	7.5	804	267				N/A
	* 16	LT245/75R16	120/116(OW)	S	7	774	248				N/A
	* 16	LT225/75R16	115/112(OW)	S	6	744	223				N/A

N/A = Values are not available at the time of publication.
* = 3PLY Sidewall

FT-7



FT-7 Fuel Efficiency Index



1. Special profile increases the tire rigidity and driving stability.
2. The tread surface is broadened and the shoulder groove is reduced to give better maneuverability.
3. Zigzag main grooves design is adopted for mud road condition.
4. Gradual widening sub-groove pattern is aimed to divert the gravel out more efficiently when cornering.
5. The noise prevention bar on the shoulder prevents premature wear and reduces the road noise generation.



FT-7 Size List

Series	Inch	Size	Load Index	Speed Index	Rim Width (Inch)	OD (mm)	SW (mm)	EU TIRE LABEL			
								RRC	Wet Grip	Noise Value (dB)	Noise Class
60'	20	275/60R20	115	T	8	838	279	F	E	73	3
	18	255/60R18	112(XL)	H	7.5	763	260	F	E	73	2
	14	P235/60R14	96(OW)	H	7	638	240	N/A			
65'	18	275/65R18	116	T	8	815	279	F	E	73	3
	18	265/65R18	114	T	8	801	272	F	E	73	3
	17	285/65R17	116(OW)	S	8.5	802	292	F	E	73	2
	17	275/65R17	115(OW)	S	8	790	279	F	E	73	3
	17	265/65R17	112(OW)	S	8	776	272	F	E	73	3
	17	255/65R17	110	H	7.5	764	260	F	E	73	3
70'	16	255/65R16	109(OW)	S	7.5	738	260	F	E	73	3
	16	275/70R16	114(OW)	S	8	792	279	F	E	73	3
	16	265/70R16	112(OW)	S	8	778	272	F	E	73	3
	16	255/70R16	111(OW)	S	7.5	764	260	F	E	73	3
	16	245/70R16	111(OW)	S	7	750	248	F	E	73	3
	16	235/70R16	108(OW)	S	7	736	240	F	E	73	3
	16	235/70R16	106	S	7	736	240	N/A			
	16	225/70R16	103(OW)	S	6.5	722	228	F	E	73	3
	15	265/70R15	112	T	8	753	272	F	E	73	3
	15	205/70R15	96(OW)	T	6	669	209	F	E	73	3
75'	16	265/75R16	116	T	7.5	804	267	F	E	73	3
	15	235/75R15	105	H	6.5	733	235	N/A			
	15	235/75R15	105	S	6.5	733	235	F	E	73	3
	15	215/75R15	100	S	6	703	216	F	E	73	3
	15	205/75R15	97	T	5.5	689	203	F	E	73	3
	15	205/75R15	99(WL)	S	5.5	689	201	N/A			
	14	205/75R14	98(WL)	S	5.5	664	203	N/A			

Series	Inch	Size	Load Index	Speed Index	Rim Width (Inch)	OD (mm)	SW (mm)	EU TIRE LABEL			
								RRC	Wet Grip	Noise Value (dB)	Noise Class
80'	16	205/80R16	104(OW)	T	5.5	734	203	F	E	73	3
	16	175/80R16	91(OW)	S	5	686	177	F	E	73	3
	16	175/80R16	91	S	5	686	177	F	E	73	3
	15	215/80R15	102(OW)	S	6	725	216	F	E	73	3
	15	195/80R15	96	S	5.5	693	196	F	E	71	2
	15	175/80R15	90	S	5	660	177	F	E	73	3
4WD	17	LT315/70R17	121/118	R	9.5	874	323	F	E	73	3
	* 17	LT225/70R17	112/110	S	6.5	748	228	N/A			
	* 16	LT285/75R16	126/123	Q	8	834	286	N/A			
	* 16	LT265/75R16	123/120(OW)	R	7.5	804	267	E	B	71	2
	16	LT265/70R16	110/107	Q	8	778	272	F	E	73	3
	16	LT245/75R16	120/116(OW)	R	7	774	248	E	E	73	3
	* 16	LT235/85R16	120/116(OW)	R	6.5	806	235	E	E	73	3
	* 16	LT225/75R16	115/112(OW)	Q	6	744	223	E	E	73	3
	15	LT235/75R15	104/101(OW)	S	6.5	733	235	F	E	73	3
	15	LT215/75R15	100/97(OW)	S	6	703	216	N/A			
VAN	15	31*10.50R15LT	109(OW)	S	8.5	775	268	F	E	73	3
	15	30* 9.50R15LT	104(OW)	S	7.5	750	240	F	E	73	3
	14	LT215/75R14	98/95	Q	6	678	216	F	E	73	3
	14	27*8.50R14LT	95(OW)	S	7	674	218	F	E	73	3
	14	27*8.50R14LT	95	S	7	674	218	N/A			
	16	LT185/85R16	105/103	N	5	721	184	N/A			
	16	205R16C	110/108(OW)	S	5.5	736	208	F	E	73	3
	15	255/70R15C	112/110(OW)	S	7.5	739	260	F	E	73	3

N/A = Values are not available at the time of publication.
* = 3PLY Sidewall



FT-9



FT-9 Size List

Series	Inch	Size	Load Index	Speed Index	Rim Width (Inch)	OD (mm)	SW (mm)	EU TIRE LABEL				
								RRC	Wet Grip	Noise Value (dB)	Noise Class	
60'	15	165/60R15	77	S	5	580	169					
65'	14	165/65R14	79(WL)	S	5	570	170					
80'	16	175/80R16	91	S	5	686	177					
4WD	16	LT255/70R16	115/112(OW)	Q	7.5	764	260					
	16	LT265/70R16	117/114(OW)	Q	8	778	272					
	* 16	LT265/75R16	123/120	N	7.5	804	267					
	* 16	LT245/75R16	120/116(OW)	N	7	774	248					
	* 16	LT235/85R16	120/116(OW)	N	6.5	806	235					
	16	LT205/80R16	110/108	Q	5.5	734	202					
	16	LT185/85R16	105/103	L	5	721	182					
	16	LT235/75R15	104/101(OW)	Q	6.5	733	235					
	15	LT215/75R15	100/97(OW)	S	6	703	216					
	* 15	37*12.50R15LT	118	L	10	928	318					
	15	31*10.50R15LT	109	Q	8.5	775	268					
	15	30*9.50R15LT	104	Q	7.5	750	240					
	17	35*12.50R17LT	119	Q	10	877	318					

N/A = Values are not available at the time of publication.
* = 3PLY Sidewall

- Interlocking shoulder block design can grip and exclude stones and clods to increase maneuverability, and allow the car to be navigated freely on rugged roads.
- Hook-shaped blocks increase gripping thrust on stones and clods.
- The extended blocks on tread shoulders provide extra traction between blocks and stones.
- The prominent bar on the bottom of the grooves prevents stones from being lodged in the grooves. Lodged stones will be expelled by the flexible moves between the prominent bar and the groove wall.
- Z-shaped zigzag grooves mill the clods and adapt to all kinds of rugged roads.



N-889



N-889 Size List

Series	Inch	Size	Load Index	Speed Index	Rim Width (Inch)	OD (mm)	SW (mm)	EU TIRE LABEL					
								RRC	Wet Grip	Noise Value (dB)	Noise Class		
60'	15	165/60R15	77(WL)	S	5	580	168						
	* 18	35*12.50R18LT	123(OW)	Q	10	877	318						
	* 17	35*12.50R17LT	121(OW)	Q	7.5	750	240						
	17	LT285/70R17	121(OW)	Q	8.5	832	292						
	17	LT265/70R17	112/109(OW)	Q	8	804	272						
	* 17	LT265/70R17	121/118(OW)	N	8	804	272						
	17	LT255/75R17	111/108(OW)	Q	7	814	253						
	16	LT315/75R16	121(OW)	Q	0.5	070	313						
	16	LT305/70R16	118/115(OW)	Q	9	834	311						
	16	LT285/75R16	122/119(OW)	M	8	834	286						
	4WD	* 16	LT265/75R16	123/120(OW)	N	7.5	804	267					
		16	LT265/75R16	112/109(OW)	N	7.5	804	267					
		16	LT265/75R16	119/116(OW)	N	7.5	804	267					
		16	LT245/75R16	108/104(OW)	N	7	774	248					
		* 16	LT245/75R16	120/116(OW)	N	7	774	248					
* 16		LT235/85R16	120/116(OW)	N	6.5	806	235						
15		LT235/75R15	104/101(OW)	Q	6.5	733	235						
15		35*12.50R15LT	113(OW)	Q	10	877	318						
15		33*12.50R15LT	108(OW)	Q	10	826	318						
15		32*11.50R15LT	113(OW)	Q	9	801	290						
15	31*10.50R15LT	109(OW)	Q	8.5	775	268							
15	30*9.50R15LT	104(OW)	Q	7.5	750	240							

N/A = Values are not available at the time of publication.
* = 3PLY Sidewall

- Special rigid shoulder and sidewall design absorb the shake from rugged roads and reduces car bumping.
- Stud holes design suits to all terrain. Studs can be applied to enhance the maneuverability and braking if necessary.
- The computer-simulated blocks perform excellently on all kinds of road conditions.
- White letter sidewall shows unique and strong characteristics.



N-870

Born to Conquer

Designed for Hummer

N-870 Size List

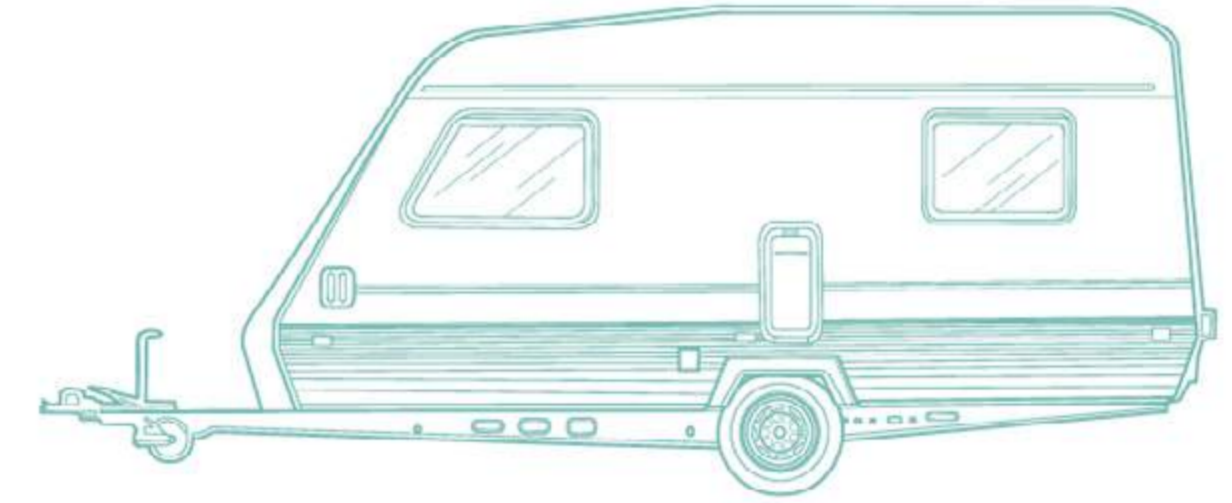
Series	Inch	Size	Load Index	Speed Index	Rim Width (Inch)	OD (mm)	SW (mm)	EU TIRE LABEL			
								RRC	Wet Grip	Noise Value (dB)	Noise Class
LTR	* 16	37*12.50R16.5	127	M	8.25	928	318				
	* 16	37*12.50R16.5	127	N	9.75	928	315				

N/A = Values are not available at the time of publication.
* = 3PLY Sidewall

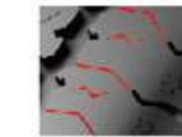
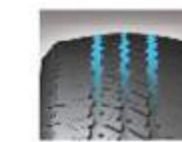


TR-10

NEW



1. Three zigzag grooves contribute to excellent traction.
2. Connective pattern on tread shoulder enhances tread stiffness and reinforces durability while high loading.
3. Unique tread compound raises block stiffness and wear mileage.



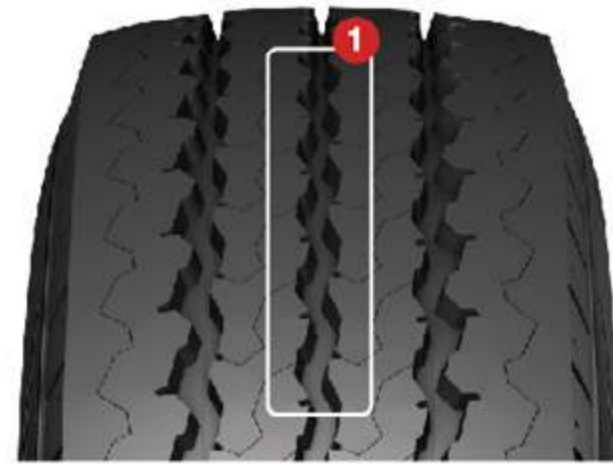
TR-10 Size List

Series	Inch	Size	Load Index	Speed Index	Rim Width (Inch)	OD (mm)	SW (mm)	EU TIRE LABEL			
								RRC	Wet Grip	Noise Value (dB)	Noise Class
VAN	14	195/70R14C	104/102	N	6	630	201	F	C	72	72
	14	185R14C	104/102	N	5.5	650	188	F	C	72	72
	14	185/65R14C	93/91	N	5.5	596	189	F	C	72	72
VAN	13	195/50R13C	104/102	N	6	526	201	F	C	72	72
	13	185/70R13C	106/104	N	5.5	590	189	F	C	72	72

Series	Inch	Size	Load Index	Speed Index	Rim Width (Inch)	OD (mm)	SW (mm)	EU TIRE LABEL			
								RRC	Wet Grip	Noise Value (dB)	Noise Class
VAN	12	195/60R12C	104/102	N	6	539	201	F	C	72	72
	12	185/60R12C	104/101	N	5.5	527	189	F	C	72	72
	12	155/70R12C	104/102	N	4.5	523	157	F	C	72	72
VAN	10	195/55R10C	98/96	P	6	468	201			N/A	
	10	145R10C	84/82	N	4	493	145			N/A	

N/A = Values are not available at the time of publication.

CW-25



1. Zigzag grooves decrease pattern noise and provide more comfortable drive.
2. CW-25 is a new generation commercial tire which emphasizes on endurance and wear performance ability.
3. Special tread compound increases mileage.
4. The excellent pattern design enhances rigidity to provide the best loading capacity.

CW-20



1. Optimal lateral grooves reduce the noise generated from air consonance and increases riding comfort.
2. Four-straight grooves ensure driving safety on wet ground.
3. Shoulder rigidity enhancement prevents from irregularly wearing and is suitable for long distance driving.
4. Sipes on the bottom of shoulder grooves keep tread soft and riding comfort in terminal wearing stage.

CW-25 Size List

Series	Inch	Size	Load Index	Speed Index	Rim Width (Inch)	OD (mm)	SW (mm)	EU TIRE LABEL			
								RRC	Wet Grip	Noise Value (dB)	Noise Class
VAN	16	225/75R16C	121/120	R	6	744	223	E	C	72	2
	16	195/75R16C	110/108	N	5.5	698	196			N/A	
VAN	15	225/70R15C	112/110	S	6.5	697	228	E	C	72	2
	15	225/70R15C	116/114	Q	6.5	697	228			0	
	15	215/70R15C	109/107	R	6.5	683	221	E	C	72	2
	15	195R15C	106/104	R	5.5	690	198	E	C	72	2
	15	195/80R15C	107/105	N	5.5	688	196	E	C	72	2
	15	195/70R15C	104/102	S	6	655	201	E	C	72	2
	15	185R15C	103/102	R	5.5	674	188	E	C	72	2
	15	185/75R15C	106/104	N	5	659	184			N/A	
	14	215R14C	112/110	R	6	700	218	E	C	72	2
	14	205R14C	109/107	R	6	686	208	E	C	72	2
VAN	14	195R14C	106/104	S	5.5	666	198	E	C	72	2
	14	185R14C	102/100	R	5.5	650	188	E	C	72	2
	14	185/75R14C	102/100	P	5	634	184	E	C	72	2
	14	175R14C	99/98	R	5	634	178	E	C	72	2
	14	175/65R14C	90/88	T	5	584	177	F	C	72	2
	14	165R14C	97/95	R	4.5	622	167	F	C	72	2
VAN	14	165/70R14C	89/87	T	5	588	170	F	C	72	2
	13	185R13C	100/98	Q	5.5	624	188	E	C	72	2
	13	175R13C	97/95	Q	5	608	178	F	C	72	2
	13	165R13C	94/92	Q	4.5	596	167	F	C	72	2
VAN	13	155R13C	90/88	R	4.5	578	157	F	C	72	2
	12	155R12C	88/86	Q	4.5	550	157	F	C	72	2
VAN	12	145R12C	81/79	N	4	537	145	F	C	72	2
	12	145R12C	86/84	N	4	537	145	E	C	72	2

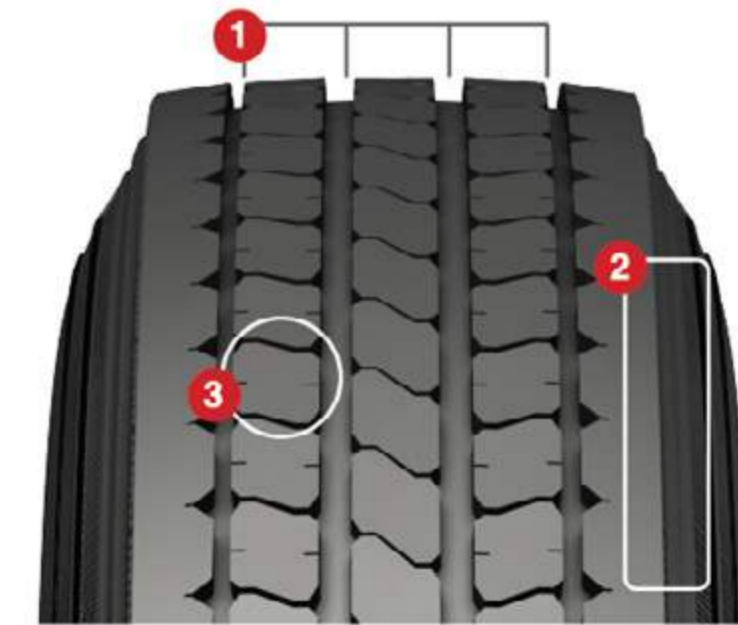
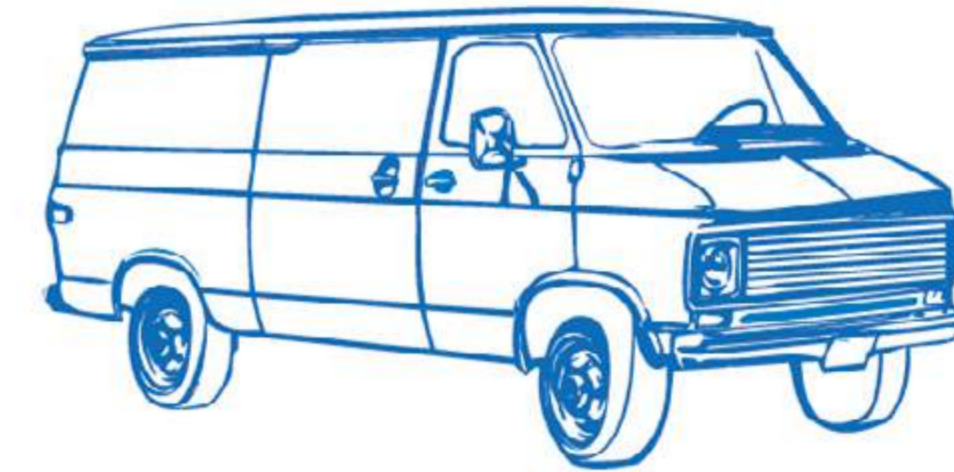
N/A = Values are not available at the time of publication.

CW-20 Size List

Series	Inch	Size	Load Index	Speed Index	Rim Width (Inch)	OD (mm)	SW (mm)	EU TIRE LABEL			
								RRC	Wet Grip	Noise Value (dB)	Noise Class
VAN	18	225/50R18C	109/107	N	7	683	233	E	E	72	2
VAN	17	215/60R17C	109/107	N	6.5	690	221	E	E	72	2
VAN	16	235/65R16C	115/113	R	7	712	240	E	E	72	2
	16	225/65R16C	112/110	S	6.5	698	228	E	E	72	2
	16	215/75R16C	116/114	S	6	728	216	C	E	72	2
	16	215/70R16C	108/106	T	6.5	708	221	E	E	72	2
	16	215/65R16C	109/107	T	6.5	686	221	E	E	72	2
	16	215/60R16C	108/106	T	6.5	664	221	E	E	72	2
	16	205/75R16C	110/108	R	5.5	714	203	E	E	72	2
	16	205/65R16C	107/105	T	6	672	209	E	E	72	2
	16	195/75R16C	107/105	R	5.5	698	196	E	E	72	2
	16	195/65R16C	104/102	T	6	660	201	E	E	72	2
VAN	16	195/60R16C	99/97	H	6	640	201	E	E	72	2
	16	185/75R16C	104/102	R	5	684	184	E	E	72	2
	16	175/75R16C	101/99	R	5	668	177	E	E	72	2
	15	215/70R15C	109/107	S	6.5	683	221	E	E	72	2
	15	215/65R15C	104/102	T	6.5	661	221			N/A	
	15	205/70R15C	106/104	S	6	669	209	E	E	72	2
VAN	15	205/65R15C	102/100	T	6	647	209	E	E	72	2
	14	205/70R14C	102/100	P	6	644	209	E	E	72	2
VAN	14	185/75R14C	102/100	P	5	634	184	E	E	72	2

N/A = Values are not available at the time of publication.

NR-066



1. The computer simulated pitches reduce the generation of noise.
2. The sidewall horizontal ratio is enlarged to ensure endurance, safety and smooth driving.
3. The deeper tread grooves ensure great gripping ability and reduce the noise at the later stage of the tire use.

NR-066 Size List

Series	Inch	Size	Load Index	Speed Index	Rim Width (Inch)	OD (mm)	SW (mm)	EU TIRE LABEL			
								RRC	Wet Grip	Noise Value (dB)	Noise Class
LTR	16	7.50R16	122/120	L	6	802	213	F	B	68	1
	16	7.00R16	117/116	N	5.5	777	197	E	C	71	2
	16	6.50R16	108/107	N	5.5	750	185	F	B	68	1

Series	Inch	Size	Load Index	Speed Index	Rim Width (Inch)	OD (mm)	SW (mm)	EU TIRE LABEL			
								RRC	Wet Grip	Noise Value (dB)	Noise Class
LTR	15	7.50R15	120/118	N	6	776	211	E	C	71	2
	15	7.00R15	114/112	N	5.5	751	197	E	C	71	2
	15	6.50R15	103/102	N	5.5	722	187	F	B	68	1

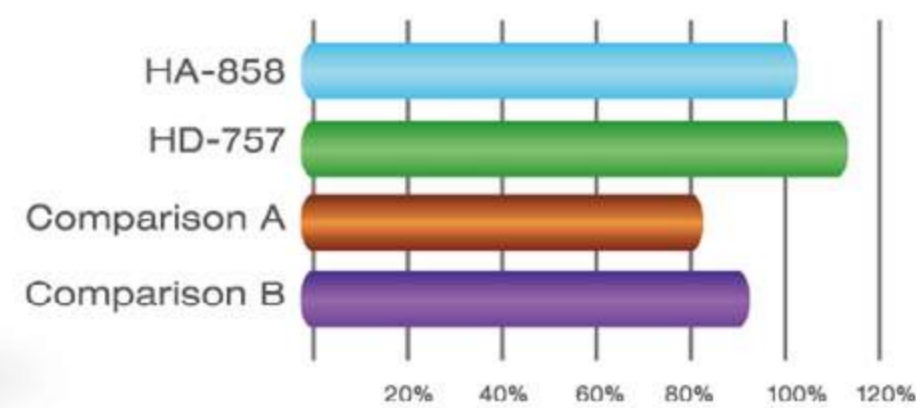
HA-858



• Recommend position



Durability test



HA-858 Size List

Series	Inch	Size	Load Index	Speed Index	Rim Width (Inch)	OD (mm)	SW (mm)	EU TIRE LABEL			
								RRC	Wet Grip	Noise Value (dB)	Noise Class
70'	19	245/70R19.5	136/134	J	7.5	839	248	D	C	70	1
	17	235/75R17.5	132/130	M	6.75	797	233	D	C	70	1
75'	17	225/75R17.5	129/127	M	6.75	783	226	E	C	70	1
	17	215/75R17.5	126/124	M	6	767	212	E	C	70	1
	17	205/75R17.5	124/122	M	6	753	205			N/A	
80'	17	225/80R17.5	123/122	L	6.75	805	226	E	C	70	1
	17	9.5R17.5	129/127	L	6.75	842	240	E	C	70	1
95'	17	8.5R17.5	121/120	L	6	802	215	E	C	70	1
	16	8.25R16	131/129	J	6.5	860	230			N/A	
	16	8.25R16	127/125	L	6.5	860	233			N/A	
	16	7.50R16	123/122	K	6	805	211	E	C	70	1

N/A = Values are not available at the time of publication.

- The full-axis tire that is suitable for expressway and general pavement.
- Four straight grooves strengthen the draining function for tire and further improve the maneuverability on wet field.
- Reinforced structure design offers higher mileage and safety of the tire, as well as provides excellent maneuverability.
- The multi-angle furrow banks, together with gravel-block strip at bottom of the flute, effectively minimize the probability of gravels being stuck in, then further protect the tread and lengthen the service life of tire, as well as reduce the maintenance costs.



HD-757



• Recommend position



HD-757 Size List

Series	Inch	Size	Load Index	Speed Index	Rim Width (Inch)	OD (mm)	SW (mm)	EU TIRE LABEL			
								RRC	Wet Grip	Noise Value (dB)	Noise Class
70'	19	245/70R19.5	136/134	L	7.5	839	248			N/A	
	17	235/75R17.5	132/130	M	6.75	797	233			N/A	
75'	17	225/75R17.5	129/127	M	6.75	783	226			N/A	
	17	215/75R17.5	126/124	M	6	767	212			N/A	
	17	205/75R17.5	124/122	M	6	753	205			N/A	
80'	17	225/80R17.5	123/122	L	6.75	805	226			N/A	
85'	16	185/85R16	111/109	N	5	720	184			N/A	
	16	215/85R16	120/118	N	6	772	216			N/A	
95'	17	8.5R17.5	121/120	L	6	802	215			N/A	
	16	7.50R16	123/122	K	6	805	211			N/A	

N/A = Values are not available at the time of publication.

- The drive axle tire is suitable for general pavement and unpaved road.
- The interlaced pattern blocks at central part of tread and bulk pattern at the outside strengthen the draining function and provide traction, then further improve the performance when drive on diverse kinds of surface.
- Reinforced structure enhances the durability and safety of the tire, as well as provides excellent maneuverability.
- The depth of horizontal grooves at the tire shoulder area is optimized to reinforce the rigidity at the medium and later stage of abrasion, then further lengthen the service life of the tire and reduce the maintenance costs.



Inch up

40 serie → 35 series			55 series → 50 / 45 / 40 / 35 series				
40 Series	35 Series		55 Series	50 Series	45 Series	40 Series	35 Series
215/40R18	255/35R18		165/55R14	165/50R15			
225/40R18	255/35R18		195/55R14	195/50R15			
235/40R18	255/35R19			205/50R15			
	255/35R19		165/55R15	195/50R15			
225/40R19	285/35R19			165/50R16			
245/40R19	285/35R19		175/55R15	195/50R15	195/45R16		
				205/50R16			
				195/50R15			
45 series → 40 / 35 series				205/50R15	205/45R16		
45 Series	40 Series	35 Series	185/55R15	215/50R15			
195/45R16	205/40R17			195/50R16			
205/45R16	215/40R17			205/50R15			
	245/40R17		195/55R15	215/50R15	215/45R16		
205/45R17	255/40R17			225/50R15			
	215/40R18			195/50R16			
	245/40R17			205/50R16			
215/45R17	255/40R17	255/35R18		215/50R15			
	225/40R18		205/55R15	225/50R15	245/45R16		
	235/40R18			205/50R16			
	245/40R17			215/50R16			
225/45R17	255/40R17	255/35R18		225/50R15			
	235/40R18		215/55R15	215/50R16	245/45R16	245/40R17	
	255/40R17			225/50R16			
235/45R17	245/40R18		195/55R16	205/50R16	215/45R16		
	255/40R18			215/50R16	245/45R16	245/40R17	
245/45R17	255/40R18			225/50R16			
	235/40R18			205/50R17			
	245/40R18	255/35R18		215/50R16	215/45R16		
215/45R18	255/40R18	255/35R19		225/50R16	215/45R16	245/40R17	
	225/40R19		205/55R17	245/50R16	235/45R17	235/40R18	255/35R18
	255/40R18			205/50R17	235/45R17		
235/45R18	245/40R19	285/35R19		215/50R17			
				225/50R17			
225/45R19	245/40R19	255/35R19	215/55R16	245/50R16	245/45R16	245/40R17	
		285/35R19		245/50R16	255/40R17	255/40R17	
245/45R19		285/35R19		235/50R17	245/45R17	235/40R18	
				245/50R17	245/45R17	245/40R18	
50 series → 45 / 40 / 35 series				245/50R16	245/45R16	255/40R17	
50 Series	45 Series	40 Series	35 Series	225/55R16	245/45R17	255/40R18	
195/50R15	205/45R16						
205/50R15	215/45R16						
165/50R16	195/45R16			205/55R17	215/50R17	235/45R17	245/40R17
					225/50R17	245/45R17	255/40R17
195/50R16	215/45R16				235/50R17	225/45R18	235/40R18
	205/45R17					235/45R18	245/40R18
205/50R16	245/45R16					235/45R18	255/40R18
	215/45R17						
215/50R16	245/45R16	245/40R17	255/35R18	215/55R17	225/50R17	235/45R17	255/40R17
	225/45R17	255/40R17			235/50R17	245/45R17	245/40R18
225/50R16	245/45R16	255/40R17	255/35R18			235/45R18	255/40R18
	235/45R17						
205/50R17	225/45R17	245/40R17		225/55R17	225/50R18	245/45R17	255/40R18
	235/45R17	255/40R17			235/50R18	245/45R18	255/40R18
	245/45R17	235/40R18				245/45R18	
		245/40R17		205/55R18	225/50R18	225/45R18	245/40R18
215/50R17	235/45R17	255/40R17			235/50R18	235/45R18	255/40R18
	245/45R17	235/40R18				245/45R18	245/40R19
	225/45R18	245/40R18				245/45R18	
	245/40R18			215/55R18	225/50R17	245/45R17	255/40R18
225/50R17	245/45R17	255/40R17			235/50R17	255/45R17	245/40R19
	235/45R17	255/40R18		225/55R18	245/50R17	235/45R18	
	245/45R18	255/40R18				235/45R18	285/35R19
235/50R17	245/45R18		285/35R19				
225/50R18	245/45R18	255/40R18	285/35R19				
235/50R18	245/45R19						

60 series → 55 / 50 / 45 / 40 / 35 series					
60 Series	55 Series	50 Series	45 Series	40 Series	35 Series
	185/55R14				
165/60R14	195/55R14				
	165/55R15				
	175/55R15				
175/60R14	185/55R14	195/50R15			
	195/55R14	195/50R15			
185/60R14	195/55R14	205/50R15	205/45R16		
195/60R14	215/55R15	225/50R15			
	165/55R15	195/50R15			
155/60R15	175/55R15	165/50R16			
	175/55R15	195/50R15			
165/60R15	185/55R15	205/50R15	195/45R16		
	185/55R15	205/50R15	205/45R16		
175/60R15	185/55R15	195/50R15	205/45R16	215/40R17	
	195/55R15	205/50R15	215/45R16		
	205/55R15	225/50R15			
	185/55R16	195/50R16			
		205/50R15			
185/60R15	195/55R15	215/50R15	215/45R16		
	205/55R15	225/50R15			
	215/55R15	195/50R16			
	195/55R16	205/50R16			
		215/50R15			
195/60R15	215/55R15	225/50R15	245/45R16	245/40R17	
	205/55R16	215/50R16			
	215/55R16	225/50R16			
205/60R15	215/55R16	225/50R16	245/45R16	245/40R17	255/40R17
		225/50R16			
215/60R15	225/55R16	245/50R16	245/45R16	255/40R17	
		245/50R17			
		195/50R16	205/45R16	215/40R17	
		205/50R16	215/45R16	245/40R17	
		215/50R16	205/45R16	205/45R17	
		225/50R16	215/45R17	215/45R17	
		215/50R16	245/45R16	245/40R17	
		225/50R16			
175/60R16	185/55R16	195/50R16	245/45R16	245/40R17	
	195/55R16	205/50R16	255/40R17	255/40R17	
	205/55R16	215/50R16	235/40R18	235/40R18	
		225/50R16	245/45R17	245/40R18	
		215/50R16			
		225/50R16	245/45R16	255/40R17	
195/60R16	205/55R16	225/50R16	245/45R17	255/40R18	
	215/55R16	245/50R16			
	225/55R16	205/50R17			
		215/50R17			
		225/50R16			
		245/50R16	245/45R16	245/40R17	245/45R17
		245/50R16	245/45R16	255/40R17	235/40R18
		245/50R16	245/45R16	255/40R18	
205/60R16	225/55R16	245/50R16	245/45R16	255/40R17	
	215/55R17	225/50R17	245/45R17	245/45R17	
		245/50R17	245/45R17	245/45R17	
		245/50R17	245/45R17	245/45R17	
215/60R16	225/55R17	245/50R16	245/45R17	255/40R18	
		235/50R17	245/45R18	255/40R18	
		225/50R18			
225/60R16		245/50R16			285/35R19
205/60R17	225/55R17	245/50R16	245/45R17	255/40R18	285/35R19
	215/55R18	225/50R17	245/45R18		
	225/55R17	235/50R17	245/45R18	255/40R19	
		245/45R18	245/45R18		
215/60R17	215/55R18	235/50R17	245/45R18		285/35R19
	225/55R18	235/50R18	245/45R18		
225/60R17	235/55R18				285/35R19

60 series		55 / 50 / 45 / 40 / 35 series				
55 Series	55 Series	55 Series	50 Series	45 Series	40 Series	35 Series
155/65R12	165/60R12					
145/65R12	155/60R13 165/60R13	155/55R14				
155/65R13	165/60R13 175/60R13		165/50R15			
165/65R13	175/60R13 185/60R13 195/60R13					
195/65R13	205/60R13					
145/65R14	165/60R14	165/55R14	165/50R15			
165/65R14	165/60R14 175/60R14	185/55R14 195/55R14 165/55R15 175/55R15				
165/65R14	175/60R14 185/60R14 195/60R14	185/55R14 195/55R14 185/55R15	195/50R15 205/50R15	195/45R16		
175/65R14	185/60R14 195/60R14 205/60R14	195/55R14 195/55R15	195/50R15 205/50R15 215/50R15	205/45R16		
185/65R14	195/60R14 205/60R14	205/55R15	215/50R15 225/50R15 205/50R16	215/45R16		
195/65R14	205/60R14 205/60R15	215/55R15	225/50R15 215/50R16			
205/65R14	205/60R15 215/60R15		225/50R15 225/50R16	245/45R16	245/40R17	
215/65R14	215/60R15		225/50R16	245/45R16	255/40R17	
145/65R15	155/60R15 165/60R15	165/55R15 175/55R15	165/50R15 195/50R15 165/50R16			
165/65R15	175/60R15 185/60R15	185/55R15 195/55R15 205/55R15 185/55R16	195/50R15 205/50R15 215/50R15 225/50R15 205/50R16	205/45R16 215/45R16	215/40R17	
175/65R15	185/60R15 195/60R15 205/60R15	195/55R15 205/55R15 195/55R16	215/50R15 225/50R15 195/50R16 205/50R16 215/50R16	215/45R16 205/45R17		
185/65R15	195/60R15 205/60R15 215/60R15 195/60R16	215/55R15 205/55R16	215/50R15 225/50R15 215/50R16 225/50R16 205/50R17	245/45R16 225/45R17	245/40R17	
195/65R15	205/60R15 215/60R15 205/60R16	215/55R16	225/50R15 225/50R16 245/50R16 215/50R17	245/45R16 235/45R17	245/40R17 255/40R17 235/40R18	
205/65R15	215/60R15 215/60R16	225/55R16	245/50R16 225/50R17	245/45R16 245/45R17	255/40R17	
215/65R15	225/60R16		245/50R16 235/50R17	245/45R18		
205/65R16	215/60R16 225/60R16 235/60R16 215/60R17	225/55R17	245/50R16 235/50R17 225/50R18	245/45R17 245/45R18	255/40R18	
215/65R16	225/60R16 235/60R16 225/60R17		245/50R16			285/35R19
235/65R17	245/60R18					
265/65R17	275/60R18					
225/65R18	245/60R18 265/60R18					

60 series		55 / 50 / 45 / 40 / 35 series				
55 Series	55 Series	55 Series	50 Series	45 Series	40 Series	35 Series
145/70R12	155/65R12 145/65R13	165/60R12 155/60R13 165/60R13	155/55R14			
155/70R12	155/65R13	165/60R13 175/60R13				
165/70R12	155/65R13	175/60R13 185/60R13 195/60R13	185/55R14			
175/70R12		185/60R13 195/60R13				
145/70R13	155/65R13 165/65R13	165/60R13 175/60R13 185/60R13	165/55R14	165/50R15		
155/70R13	165/65R13 155/65R14	175/60R13 185/60R13 195/60R13 165/60R14	185/55R14 195/55R14 165/55R15			
165/70R13	195/65R13 165/65R14 175/65R14	185/60R13 195/60R13 205/60R13 175/60R14 185/60R14	185/55R14 195/55R14 185/55R15	195/50R15	195/45R16	
175/70R13	195/65R13 175/65R14 185/65R14	195/60R13 185/60R14 195/60R14 185/60R15	195/55R14 195/55R15	195/50R15 205/50R15 215/50R15	205/45R16	
185/70R13	195/65R13 185/65R14 195/65R14	205/60R13 195/60R14 205/60R14 195/60R15	205/55R15	215/50R15 225/50R15 205/50R16	215/45R16	
165/70R14	175/65R14 185/65R14 165/65R15	185/60R14 195/60R14 205/60R14 175/60R15 185/60R15	195/55R14 185/55R15 195/55R15	195/50R15 205/50R15 215/50R16 195/50R16	205/45R16	
175/70R14	185/65R14 195/65R14 205/65R14 175/65R15 185/65R15	195/60R14 205/60R14 185/60R15 195/60R15 205/60R15	205/55R15 215/55R15 225/55R15 195/55R16	205/50R15 215/50R15 225/50R15 215/50R16 205/50R16	215/45R16aa 245/45R16 205/45R17	
185/70R14	195/65R14 205/65R14 215/65R14 185/65R15 195/65R15 205/65R15	205/60R14 195/60R15 205/60R15 215/60R15 195/60R16	215/55R15 225/55R15 215/55R16 225/55R16	215/50R15 225/50R15 215/50R16 205/50R16	245/45R16 225/45R17	245/40R17 255/40R17
195/70R14	205/65R14 195/65R15 205/65R15	205/60R15 215/60R15 205/60R16	225/55R16	245/45R16 235/45R17 245/45R17	245/40R17 255/40R17	
205/70R14	215/65R14 205/65R15 215/65R15 205/65R16	215/60R15 225/60R15 215/60R16	225/55R16	245/45R16 245/45R17	255/40R17	
195/70R15	205/65R15 215/65R15 205/65R16	205/60R16 215/60R16 225/60R16 205/60R17	225/55R16 225/55R17	245/45R16 235/45R17 235/45R18	255/40R17 245/40R18 255/40R18	
205/70R15	215/65R15 205/65R16 215/65R16	215/60R16 225/60R16 235/60R16 215/60R17	225/55R17	245/45R16 245/45R18	255/40R18	
215/70R15	215/65R16 235/65R16	225/60R16 235/60R16 225/60R17		245/50R16		
225/70R15	235/65R16 225/65R17	235/60R16				
235/70R15	235/65R16 255/65R16					
225/70R16	255/65R16					
265/70R15	265/65R17	265/60R18				
205/70R16	215/65R16 235/65R16 225/65R17	225/60R16 235/60R16 225/60R17	225/55R18 235/55R18	235/50R18		
215/70R16	235/65R16 225/65R17	235/60R16 225/60R17	235/55R18			
255/70R16	235/65R16 255/65R16	245/60R18				
235/70R16	255/65R16					
245/70R16	255/65R16 265/65R17	265/60R18 245/60R19				
255/70R16	265/65R16 265/65R17 275/65R17	265/60R18 275/60R18				
265/70R16	265/65R17	275/60R18				
275/70R16	275/65R17					
245/70R17	265/65R17 275/65R17	265/60R18 275/60R18				

Safety

Choosing a tire and replacement

Follow the original vehicle manufacturer OE rim specifications and discuss with a professional tire shop before making a replacement.

All tires used must be of identical specifications and tread pattern.

Do not mix different models, structures, or sizes of tires, to avoid accidents.

Tires are marked with a direction on the sidewall and are to be installed in that direction.

Correct use and daily inspection

Tire Pressure

Measure the tire pressure when the tire is cold and inflate to originally specified pressure.

Treadwear Indicator

Minimum tread depth is limited to 1.6mm.

There are ▲ on the circumference of tire shoulder to specify where treadwear indicators are located.

Caution

Check the tire surface for cracks, pins, metal scraps, glass or anything that may puncture the tire. Also, check for pebbles stuck in the grooves. If any of the above situations occur, please go to a professional tire shop for repair.

Do not use a tire with damage through which the underlying fabric or steel belt is visible, to prevent accidents.

Mounting a tire to rim should be following the instruction of direction.

The tires should be rotated according to specifications.

If the tire crown is abnormally worn (damage), please go to a professional tire shop for replacement.

Avoid direct sunlight, rain, oil, and electric sparks in tire storage locations.

The tire is made of rubber and will deteriorate after a long period of use, and should be periodically inspected. Nankang doesn't guaranty tire whichever five years off from manufactured date the tires should be inspected regularly by the shop; tire over 5 year-old must be replaced.

Important Precautions for Drivers

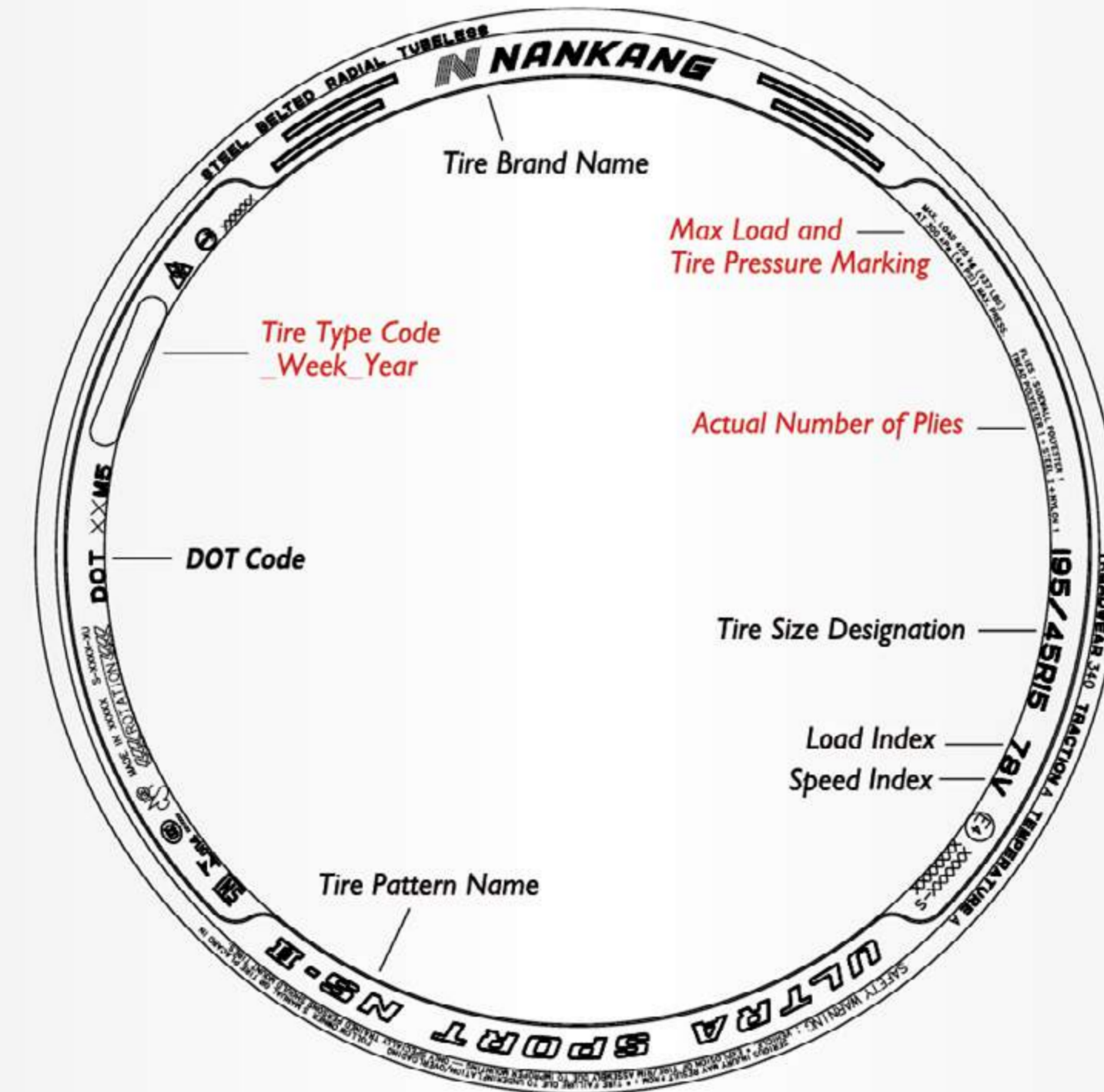
Avoid grinding the sidewall against the curb and running over bumpy surfaces to limit damage to the tires.

Avoid sharp cornering, quick stops, and rapid acceleration to prevent accidents from happening.

Keep a safe driving distance and obey the speed limit.

When you feel vibration from the vehicle or steering wheel, inspect the tires or return them to a tire shop for a checkup.

Tire Sidewall Marketing Descriptions



• United States Department of Transportation Safety Standards

United States Department of Transportation regulation "Federal Motor Vehicle Safety Standards", tire must be marked as

Manufactured Date



• Tire marked with DOT indicates

- a. Registered with U.S. DOT
- b. Passes certification of U.S. DOT regulated safety standards testing

• Tire Pressure Marking

MAX LOAD() LBSat () PSI MAX. PRESSURE

(Example) When inflation pressure is 36PSI (max), the maximum load is 1135 LBS.

Note: The maximum tire load and inflation pressure for a cold tire.

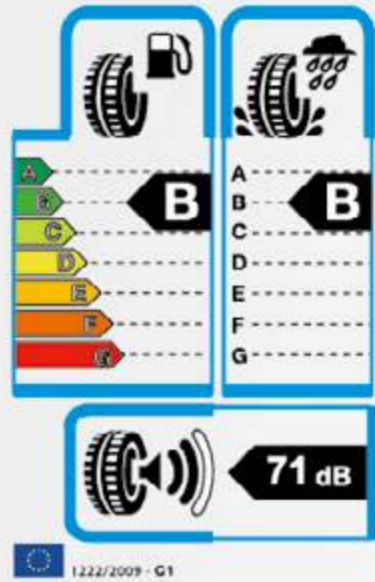
Note: During normal use, please follow the marked inflation pressure on the tire. Do not exceed the maximum pressure.

• Actual number of plies

PLIES: SIDEWALL POLYESTER X

TREAD POLYESTER X+STELL X+NYLON X

EUROPEAN TIRE LABEL



All new tires, produced after 1st July 2012, and to be sold at point of sale in EU countries after 1st November 2012; must follow EC NO 1222/2009 labeling criteria, and should be labeled with stickers to give the information. The aim is to improve driving safety, fuel efficiency, and lower noise levels. This regulation allows consumers to make more informed choices when purchasing tires by considering these ranking.

(Source from ETRMA www.etrma.org/tyres/tyre-labelling)

RRC (Rolling Resistance Coefficient)

Lower rolling resistance contributes to fuel saving and less carbon dioxide emission. Grade A: most efficiency. Grade G: least efficiency. Choosing grade A the tire consume less fuel and carbon dioxide emission.

Effect may vary among vehicles and driving conditions, but the difference between a G and an A level for a complete set of tires could reduce fuel consumption by up to 7.5% and even more in case of trucks.

Wet Grip

Wet grip is an important indication for tire performance on wet road braking distance. Grade A: the shortest distance. Grade G: the longest distance. Choosing grade A indicates the tire could be shorter 30% braking distance than Grade G.

Effect may vary among vehicles and driving conditions, but in the case of full braking, the difference between a G and an A level for a set of four identical tires could be up to 30% shorter braking distance (e.g. for a typical passenger car driving at 80 km/h speed, this could be up to 18m shorter braking distance)

External rolling noise classes

The external rolling noise is measured and declared in decibels (dB), and indicated in three levels. More black bars which mean the tires create more noise.

Passenger car rim width regulations

approved by ETRTO - 2015

Tyre Size	sizes	From Rim Size	To Rim Size	Tyre Size	sizes	From Rim Size	To Rim Size
30 series				55 series			
215/30	R20	7J	8J	175/55	R15, 16	5J	6J
225/30	R19, 20	7.5J	8.5J	185/55	R14, 15, 16	5J	6.5J
235/30	R20	8J	9J	195/55	R15, 16	5.5J	7J
245/30	R19, 20	8J	9J	205/55	R15, 16, 17	5.5J	7.5J
255/30	R19, 20, 21, 22	8.5J	9.5J	215/55	R16, 17, 18	6J	7.5J
265/30	R19, 20, 22	9J	10J	225/55	R16, 17, 18, 19	6J	8J
275/30	R19, 20	9J	10J	235/55	R17, 18, 19	6.5J	8.5J
285/30	R18, 19, 20, 21	9.5J	10.5J	255/55	R18, 19	7J	9J
295/30	R19, 22	10J	11J	275/55	R17, 19	7.5J	9.5J
305/30	R19	10.5J	11.5J	60 series			
35 series				65 series			
165/35	R17, 18	5.5J	6.5J	155/60	R15	4.5J	5.5J
185/35	R17	6J	7J	165/60	R12, 14, 15	4.5J	6J
215/35	R18, 19	7J	8.5J	175/60	R13, 14, 15, 16	5J	6J
225/35	R18, 19, 20	7.5J	9J	185/60	R13, 14, 15, 16	5J	6.5J
235/35	R19, 20	8J	9.5J	195/60	R14, 15, 16	5.5J	7J
245/35	R18, 19, 20, 21	8J	9.5J	205/60	R13, 14, 15, 16	5.5J	7.5J
255/35	R18, 19, 20	8.5J	10J	215/60	R14, 15, 16, 17	6J	7.5J
265/35	R18, 19, 22	9J	10.5J	225/60	R15, 16, 17, 18	6J	8J
275/35	R18, 19, 20	9J	11J	235/60	R16, 17, 18	6.5J	8.5J
285/35	R22	9.5J	11J	245/60	R18	7J	8.5J
295/35	R21, 24	10J	11.5J	255/60	R17, 18	7J	9J
305/35	R24	10J	12J	265/60	R18	7.5J	9.5J
315/35	R20	10.5J	12.5J	275/60	R20	7.5J	9.5J
40 series				70 series			
165/40	R16, 17	5.5J	6.5J	145/70	R16	4J	5J
195/40	R16, 17	6.5J	7.5J	155/70	R13, 14	4.5J	5.5J
205/40	R16, 17, 18	7J	8J	165/70	R13, 14, 15	4.5J	6J
215/40	R16, 17, 18	7J	8.5J	175/70	R14, 15	5J	6J
225/40	R18, 19	7.5J	9J	185/70	R14, 15	5J	6.5J
235/40	R17, 18, 19	8J	9.5J	195/70	R14, 15, 16	5.5J	7J
245/40	R17, 18, 19, 20	8J	9.5J	205/70	R15, 16	5.5J	7.5J
255/40	R17, 18, 19	8.5J	10J	215/70	R15, 16	6J	7.5J
265/40	R18, 20, 22	9J	10.5J	225/70	R16, 17, 18	6J	8J
275/40	R17, 18, 19, 20	9J	11J	235/70	R16, 17	6.5J	8.5J
285/40	R24	9.5J	11J	245/70	R17	7J	8.5J
295/40	R20, 24	10J	11.5J	255/70	R16, 17	7J	9J
305/40	R22	10J	12J	265/70	R17	7.5J	9.5J
45 series				75 series			
165/45	R15, 16, 17	5J	6J	175/75	R16	4.5J	5J
185/45	R15	6J	7J	185/75	R14, 16	4.5J	6J
195/45	R15, 16, 17	6J	7.5J	195/75	R16	5J	6.5J
205/45	R16, 17	6.5J	7.5J	205/75	R16	5J	7J
215/45	R16, 17, 18	7J	8J	215/75	R16	5.5J	7J
225/45	R16, 17, 18, 19	7J	8.5J	225/75	R16	6J	7.5J
235/45	R17, 18, 19, 20	7.5J	9J	235/75	R15	6J	8J
245/45	R16, 17, 18, 19, 20	7.5J	9J	265/75	R16	7J	9J
255/45	R17, 18, 19, 20	8J	9.5J	75 series			
265/45	R21	8.5J	10J	155/80	R13, 14	4J	5J
275/45	R19, 20	8.5J	10.5J	165/80	R13, 15	4J	5.5J
285/45	R19	9J	10.5J	175/80	R14	4.5J	6J
295/45	R20	9.5J	11J	195/80	R15	5J	6.5J
305/45	R22	9.5J	11.5J	205/80	R16	5J	7J
50 series				75 series			
165/50	R15, 16	4.5J	6J	215/80	R15, 16	5.5J	7J
175/50	R13	5J	6J	235/80	R16	6J	8J
195/50	R15, 16	5.5J	7J	75 series			
205/50	R15, 16, 17	5.5J	7.5J	155/80	R13, 14	4J	5J
215/50	R17, 18	6J	7.5J	165/80	R13, 15	4J	5.5J
225/50	R15, 16, 17, 18	6J	8J	175/80	R14	4.5J	6J
235/50	R17, 18, 19	6.5J	8.5J	195/80	R15	5J	6.5J
245/50	R18, 20	7J	8.5J	205/80	R16	5J	7J
255/50	R19, 20	7J	9J	215/80	R15, 16	5.5J	7J
265/50	R20	7.5J	9.5J	235/80	R16	6J	8J
285/50	R20	8J	10J	75 series			
295/50	R15	8J	10.5J	155/80	R13, 14	4J	5J
305/50	R20	8.5J	11J	165/80	R13, 15	4J	5.5J
55 series				75 series			
155/55	R14	4.5J	5.5J	175/80	R14	4.5J	6J
165/55	R13, 14	4.5J	6J	195/80	R15	5J	6.5J