



Gamela

Enterprise Co., Ltd.



Welcome to our site...

BASIC AUTO TOOLS

	AIR DUSTER	1
	FLUID EXTRACTOR	2-6, 18, 20-21
	CLEANER & TESTER KIT	7-8
	CARBON WASHING KIT	9
	OIL EXTRACTOR	10-11
	OIL & LIQUID DISPENSER	12-14, 19
	AIR WASHING BUBBLE SPRAYER	14
	WASTE OIL TREATING MACHINE	14
	BRAKE BLEEDER	15
	RADIATOR FLUID REFILLER KIT	15
	BRAKE OIL RECEIVER	15
	TORQUE TEST MACHINE	16
	BRAKE BLEEDER WRENCH	16-17
	ACCESSORIES	16-17
FENDER REFORMING TOOL	17	
DENT PULLER	17	
TRANSMISSION FILLING SYSTEM	20	
FUEL RETRIEVER	21	
SYRINGE FOR FLUID CHANGE	21-22	
PARTS WASHER	22	

GAMELA ENTERPRISE CO., LTD.

5F., No.657-1, Zhongzheng Rd.,

Xinzhuang Dist., New Taipei City 242, Taiwan

TEL: 886-2-29013211 FAX: 886-2-29042386

E-mail : gamela@gamela.com.tw

Website : www.gamela.com.tw

Copyright 2014 Gamela Enterprise Co., Ltd.

TH59016



TH59017



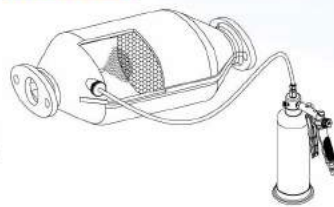
TH59001



TH59079



TH59036



TH59075



TH59074



TH59080



TH59076



TH59081



TH59015



4L , 6L , 6.5L , 9.5L , 15L

PNEUMATIC / MANUAL OPERATION FLUID EXTRACTOR



- * Air inlet control valve.
- * Negative pressure quick exhaust valve.
- * Fluid draining pressure balancer.

OPTION PARTS

A : 4 X 8 Silicon Hose x 1.5M



Tubes organizer

Pneumatic Brake Oil Bleeder Kit



Pneumatic Oil (ATF) & Fluid Extractor / Dispenser



Vacuum Brake Fluid Bleeder



Transmission Filling System



Manual Fluid Dispenser



Stainless Fuel Retriever



Parts Washer



Syringe for Vehicle Fluid Change



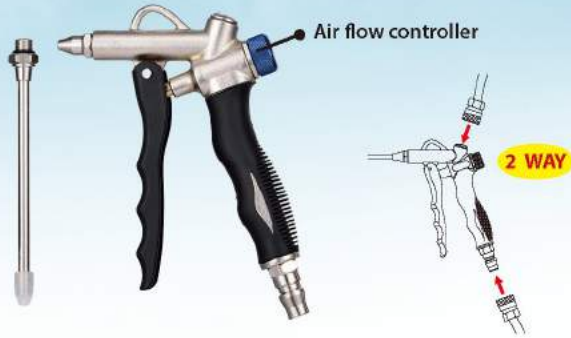
Utility IN & OUT Fluid Syringe



TH59016 TWO WAY AIR DUSTER

PAT.

Packing 48/10/11/1.2'
CTN size 41x26x31CM



TH59017 TWO WAY AIR DUSTER

Packing 48/9.5/10.5/1.2'
CTN size 41x26x31CM



TH59016L AIR DUSTER W/LONG NOZZLE

PAT.

Packing 48/12/13/1.7'
CTN size 36x29x47CM



TH59001 3 IN 1 TIRE INFATOR W/GAUGE

PAT.

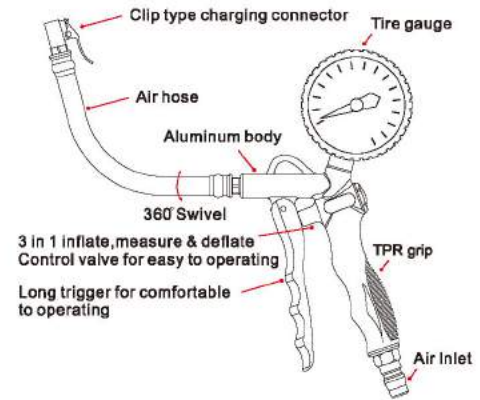
Packing 36/15.5/16.5/2.4'
CTN size 49x30x45CM



TH59018 AIR DUSTER W/HIGH FLOW NOZZLE

PAT.

Packing 48/14/15/2.1'
CTN size 49x29x41CM



TH59019 AIR DUSTER W/SAFETY NOZZLE

PAT.

Packing 48/9/10/1.2'
CTN size 41x26x31CM



TH59020 90 PSI Z SWIVEL CONSTANT PRESSURE VALVE

PAT.

The special set pressure accepts to order production (40psi~90psi)



TH59021 PRESSURE REDUCING VALVE W/GAUGE

PAT.P



MANUAL OPERATION FLUID EXTRACTOR

TH59022 9.5L(2.5GAL.) PAT.

Packing 2/9/10/4'
CTN size 54x35x61CM



TH59023 6.0L(1.6GAL.) PAT.

Packing 4/18/19/6.2'
CTN size 69x54x46CM

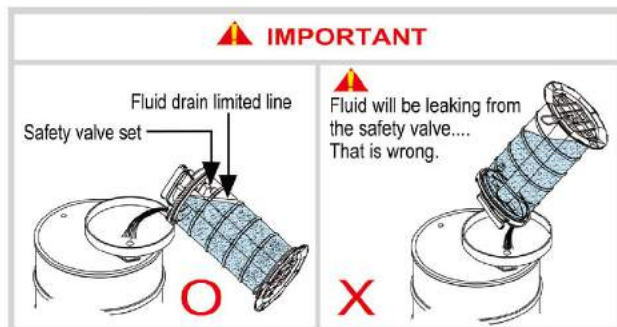
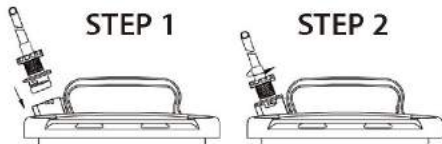


- Three air outlet with check valve design on handle for easy & quick to release air pressure from the extractor.
- Easy to operate suitable for engine oil, gear oil, brake fluid, coolant, water...etc.
- Provide with new decompression valve for easy to release the negative pressure.
- Fixing valve & safety cup for automatic cut-off extracting.
- Non-spark, non-power fluid extractor.
- Include 3 kinds nylon tubes can be extracting and non-corrosive fluid.
- Include "A" 1.5 meter silicon hose with one touch controller & universal rubber adapter, can fits to most type brake fitting



STANDARD ACCESSORIES:

- A : 4 x 8 Silicon hose x 1.5M
- B : 7.8 x 9.8 Nylon hose x 1M
- C : 5.3 x 6.7 Nylon hose x 1M
- D : 3.5 x 4.5 Nylon hose x 1M



PNEUMATIC / MANUAL OPERATION FLUID EXTRACTOR

TH59002 9.5L(2.5GAL.) PAT.

Packing 2/10/11/4'
CTN size 54x35x61CM



TH59024 6.0L(1.6GAL.) PAT.

Packing 4/18.5/19.5/6.2'
CTN size 69x54x46CM



- Air inlet control valve.
- Negative pressure quick exhaust valve.
- Fluid draining pressure balancer.



Vacuum body



- Three air outlet with check valve design on handle for easy & quick to release air pressure from the extractor.
- Easy to operate suitable for engine oil, gear oil, brake fluid, coolant, water...etc.
- Provide with new decompression valve for easy to release the negative pressure.
- Fixing valve & safety cup for automatic cut-off extracting.
- Non-spark, non-power fluid extractor.
- Include 3 kinds nylon tubes can be extracting and non-corrosive fluid.
- Include "A" 1.5 meter silicon hose with one touch controller & universal rubber adapter, can fits to most type brake fitting.



PAT.

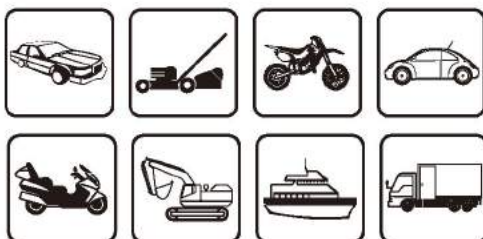
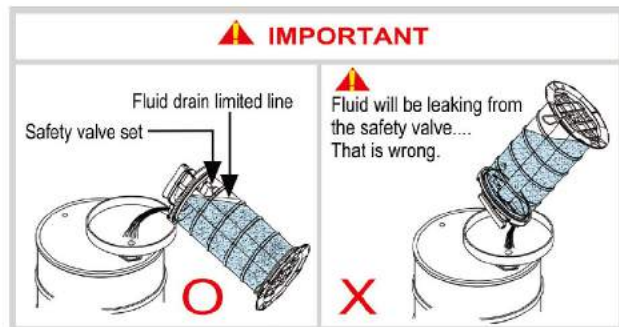


SPECIFICATION:

* Air Inlet	1/4"
* AVG.Air cons	2CFM
* Working pressure range	40-170Psi 2.8-11.7Bar. 0.28-1.17Mpa

STANDARD ACCESSORIES:

- A : 4 x 8 Silicon hose x 1.5M
- B : 7.8 x 9.8 Nylon hose x 1M
- C : 5.3 x 6.7 Nylon hose x 1M
- D : 3.5 x 4.5 Nylon hose x 1M



PNEUMATIC / MANUAL OPERATION FLUID EXTRACTOR

TH59003 15L(4GAL.) PAT.

Packing 1/3/3.5/1.3'
CTN size 25x25x58CM



Manual

TH59004 15L(4GAL.) PAT.

Packing 1/3.5/4/1.3'
CTN size 25x25x58CM



Pneumatic / Manual

TH59025 15L(4GAL.) PAT.

Packing 1/2.5/3/1.3'
CTN size 25x25x58CM



Pneumatic

- Two air outlet with check valve design on handle for easy & quick to release air pressure from the extractor.
- Easy to operate suitable for engine oil, gear oil, brake fluid, coolant, water...etc.
- Provide with new decompression valve for easy to release the negative pressure.
- Fixing valve & safety cup for automatic cut-off extracting.
- Non-spark, non-power fluid extractor.
- Include 3 kinds nylon tubes can be extracting any non-corrosive fluid.



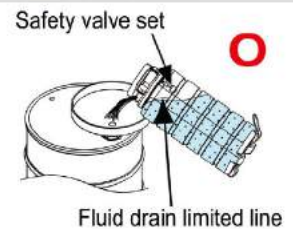
- Vacuum system.
- Air inlet control valve.
- Negative pressure quick exhaust valve.
- Fluid draining pressure balancer.

※ Option parts "A" 1.5 meter silicon hose with one touch controller & universal rubber adapter, can fits to most type brake fitting.

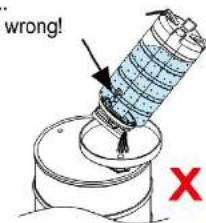
Option parts "A" , 4 x 8 silicon hose x 1.5M



IMPORTANT



Fluid will be leaking from the safety valve... That is wrong!

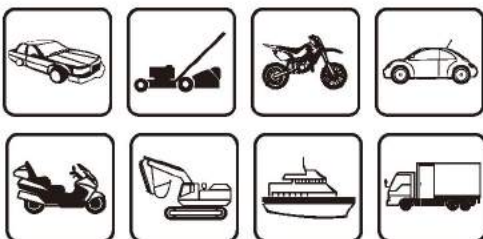


SPECIFICATION:

- Air Inlet 1/4"
- AVG.Air cons 2CFM
- Working pressure range 40-170Psi
2.8-11.7Bar. 0.28-1.17Mpa

STANDARD ACCESSORIES:

- B : 7.8 x 9.8 Nylon hose x 1M
- C : 5.3 x 6.7 Nylon hose x 1M
- D : 4 x 6 Nylon hose x 1M



PNEUMATIC / MANUAL OPERATION FLUID EXTRACTOR

TH59026 6.5L(1.7GAL) PAT.

Packing 4/12.5/13.5/4'
CTN size 44x43x58CM



TH59027



W/Tubes organizer

PAT.

TH59028 6.5L(1.7GAL) PAT.

Packing 4/13/14/4'
CTN size 44x43x58CM



TH59029



W/Tubes organizer

PAT.

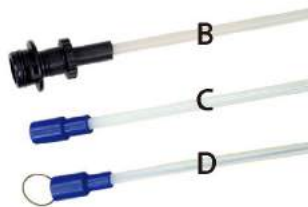
- Three air outlet with check valve design on handle for easy & quick to release air pressure from the extractor.
- Easy to operate suitable for engine oil, gear oil, brake fluid, coolant, water...etc.
- Provide with new decompression valve for easy to release the negative pressure.
- Fixing valve & safety cup for automatic cut-off extracting.
- Non-spark, non-power fluid extractor.
- Include 3 kinds nylon tubes can be extracting and non-corrosive fluid.

※ Option parts: "A" 1.5 meter silicon hose with one touch controller & universal rubber adapter, can fits to most type brake fitting.

Option parts "A", 4 x 8 silicon hose x 1.5m



PAT.



STANDARD ACCESSORIES:

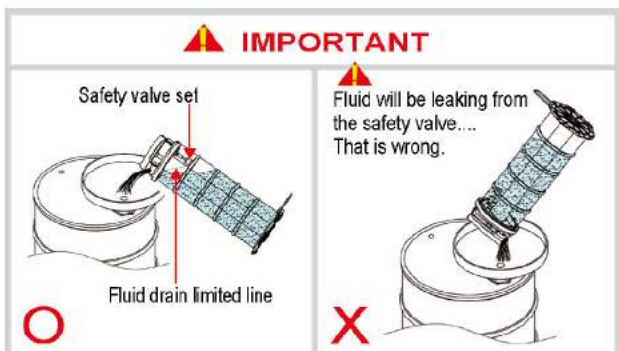
B : 7.8 x 9.8 Nylon hose x 1M

C : 5.3 x 6.7 Nylon hose x 1M

D : 4 x 6 Nylon hose x 1M

SPECIFICATION:

- Air Inlet 1/4"
- AVG.Air cons 2CFM
- Working pressure range 40-170Psi
2.8-11.7Bar. 0.28-1.17Mpa



IMPORTANT

Safety valve set

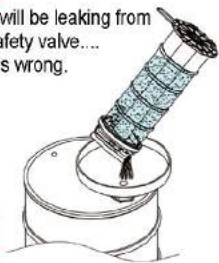


Fluid drain limited line

O

!

Fluid will be leaking from the safety valve.... That is wrong.



X



TH59030 5.5L PNEUMATIC FLUID EXTRACTOR**PAT.**

- Simple and easy to operate suitable for engine oil Gear oil transmission and brake fluid water...
- Extract within 3 min. For 5.5 Liter engine oil.
- Non-spark power oil extracting.
- One man, clear operation, quick and safety.

* Air inlet	1/4"
* AVG. Air cons	2CFM
* Working pressure	40-170PSI
* Max. Capacity	5500cc
* Packing	4/9.5/10.5/3.8'
* CTN size	45x45x52CM

TH59031 8.5L PNEUMATIC FLUID EXTRACTOR**PAT.**

- Capacity 8.5L for extracting some kind new car engine oil.
- Pneumatic extractor non-spark.
- One man in same step operate.
- 1 Meter silicon hose with universal rubber adaptdr, can fit most type brake fitting.
- Fixing valve & safety cup for automatic cut-off extracting.
- 21 Century new patented products.

* Air inlet	1/4"
* AVG. Air cons	2CFM
* Working pressure	40-170PSI
* Max. Capacity	8500cc
* Packing	4/11/12/3.5'
* CTN size	43x43x54CM

TH59032 10L PNEUMATIC FLUID EXTRACTOR**PAT.**

- Capacity 10L for extracting some kind new car engine oil.
- Pneumatic extractor non-spark.
- One man in same step operate.
- 1 Meter silicon hose with universal rubber adaptdr, can fit most type brake fitting.
- Fixing valve & safety cup for automatic cut-off extracting.
- 21 Century new patented products.

* Air inlet	1/4"
* AVG. Air cons	2CFM
* Working pressure	40-170PSI
* Max. Capacity	10000cc
* Packing	4/12/13/4.4'
* CTN size	48x48x54CM

Operational example

RESTORE LOST PERFORMANCE

By cleaning up carbon deposits from the intake system and the combustion chamber, **Quk-Saf FUEL INJECTION CLEANER & TESTER KIT Fuel System** Treatment can restore lost power and let you rediscover the power of your engine while you drive.

TH59007 FUEL INJECTION CLEANER & TESTER KIT

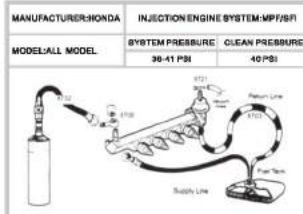


- Cleaning fuel injector
- Cleaning intake valve
- Cleaning combustion chamber
- Cleaning vacuum system
- Cleaning parts and valves
- Test enging system pressure
- Test fuel pump pressure
- Test the sealing condition of Return line diaphran



BEFORE AFTER

Packing 4/17/18/2.5'
CTN size 45x43x37CM

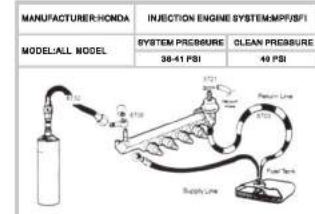


TH59033 FUEL INJECTION CLEANER (FOR PRESSURE CLEANER CANISTER)



Packing 5/16/17/1.9'
CTN size 44x37x33CM

without inclusion



TH59034 2000cc PENUMATIC ENGINE VALVE & PARTS CARBON CLEAN KIT.

PAT.



Universal for all model

- * Air inlet 1/4"
- * AVG. Air cons 2CFM
- * Working pressure 40-170PSI
- * Max. Capacity 2000cc
- * Packing 12/16/17/3.4'
- * CTN size 43x36x62CM

Operational example



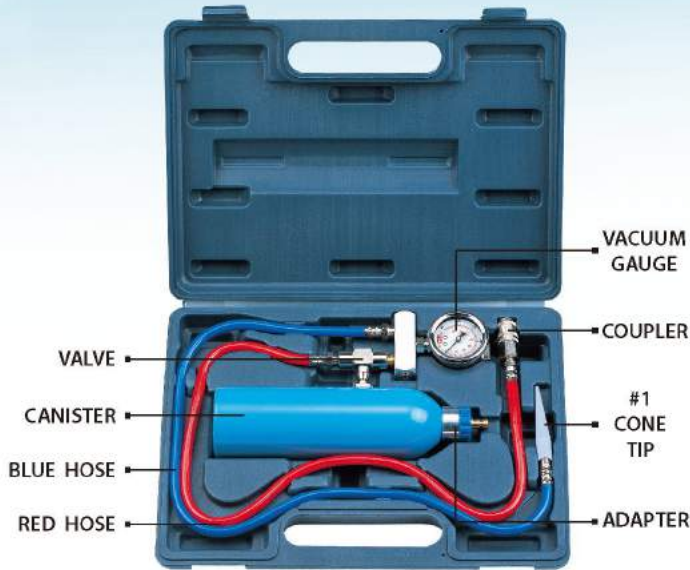
Washing engine carbon operate example (Use chemical cleaner)

- Simple and easy to operate suitable extracting & filling fluid.
- Washing engine carbon with special parts.
- Filling fluid control valve with nylon & pu hose.
- 21 Century new patented products.

TH59008 VACUUM SYSTEM CLEANER & TESTER KIT

Blow case packing 6/10/11/1.9'
 CTN size 49x38x30CM
 Plain box 12/12/13/3' 52x29x61CM

Operational example

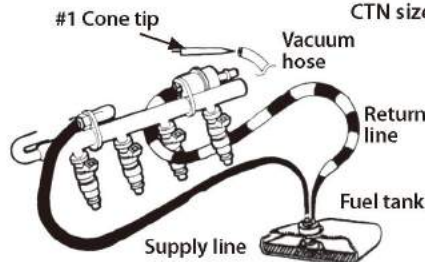


Honda vacuum hose

- Instructions:
- Release the blue cap from the canister.
- Insert the cleaning reagent into the canister and fasten the blue cap on the canister securely.
- Connect the quick coupler of red hose to the adapter of blue cap.
- Remove the rubber vacuum hose from the connecting barb of the vehicle vacuum system. (Pls see reference picture)
- Insert the white cone tip (part#1) of the blue hose to the vacuum hose of vehicle.
- Start the engine, the vacuum meter will indicate minus 50 cm-hg range.
- Turn on the control valve on the end of red hose. The cleaning reagent will run into the vacuum system of vehicles. And start to clean the vacuum system.
- After seven to ten minutes, intake valve and combustion chamber. The carbon in the are totally removed.
- Remove the white cone tip (part#) from the vacuum hose of vehicle. And reinstall the vacuum hose to the connecting Barb of vehicle. The cleaning procedure is completed.

TH59009 VACUUM SYSTTEM CLEANER & TESTER KIT

Packing 1 pcs/plain box 12/8/9/1.9'
 CTN size 49x36x30CM



Volvo injection engine system

Operational example



Quk-Saf fuel injection cleaner kit

- Cleaning intake valve
- Cleaning combustion chamber
- Cleaning vacuum system
- Test vacuum system pressuer



Honda vacuum hose

Universal for all model

TH59035 ENGINE INTAKE SYSTEM CARBON WASHING KIT WASHING KIT

PAT.

Packing 10/11/12/2.5'
CTN size 83x38x29CM



INSTRUCTIONS:

- Warm up the engine, then shut off and disassemble the spark plugs from engine.
- Insert the cleaning reagent into the canister and ensure without and leakage, fasten the knob of regulation and set the slide valve to "on" position.
- Ensure the pressure gauge of regulator indicate 0 psi, and lock on the vacuum knob(#07) then turn on the knob of
- Regulator allow the compression air into the canister.
- Insert the lead hose to the spark plug holes and raise the pressure gently. The cleaning reagent will flow in
- The combustion chamber. While all combustion chamber filled by the cleaning reagent, remove the lead hose.
- The pressure gauge of regulator indicate around 20 psi.
- Set the slide valve to "off" position and stay 15-20 minutes.
- The carbon in the combustion chamber will react with the cleaning reagent.
- Release the vacuum knob 2 turns, and reinsert the lead hose into the spark plug hole, then set the slide valve to "on" position.
- Raise the air pressure to 90 psi. The carbon a cleaning reagent will suck out. The cleaning procedure completed.
- Reinstall the spark plugs on the engine, and start the engine.
- This is the best procedure for clean the carbon in the combustion chamber.

Operational example

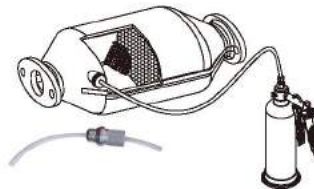


Universal for all model

TH59036 THREE-WAY CATALYTIC CONVERTER CARBON WASHING KIT

PAT.

Packing 12/ 9/10/3.9'
CTN size 47x39x68CM




Put the clean pipe through the adapter inside diameter into catalytic converter.

INSTRUCTIONS:

- Fill cleaning reagent into the canister about 200 c.c. and lock the cap. connect air power.
- Use the safety machine elevates the vehicle and pick up the tools at appropriate position to near the O2 sensor.
- Disassemble the O2 sensor nut and lock the adapter onto the O2 sensor female nut.
- Put the clean pipe through the adapter inside diameter into carburetor converter.
- Push the trigger. Then cleaning reagent will to become bubble filled into the catalytic converter.
- When the cleaning liquid spraying completes, Remove the lead hose and take out the adapter.
- Pick up the tools and lock the O2 sensor nut.
- Wait about 5 minutes after to start the engine, Then catalytic converter carbon liquid will outlet follow the exhaust pipe. The cleaning working will be finished.
- Stainless canister for long life.
- Aluminum base stand for tools placed more stable.
- Working pressure range : 3 bar~7 bar (45Psi~100Psi).
- Max.Capacity : 650 cc (22 FL OZ).
- 4 x 6 Nylon hose x 2.7M.

Operational example



-  Keep away from children and wear personal protective equipment at all time while using tools.
- Use the safety machine elevates the vehicle is important.
- Do not use this tools. When engine is high temperature.



SPECIFICATIONS

* Air inlet	1/4"
* AVG. Air cons	2CFM
* Working pressure	40-170PSI
* Max. Capacity	2000cc
* Packing	12/15/16/3.5'
* CTN size	43x36x62CM



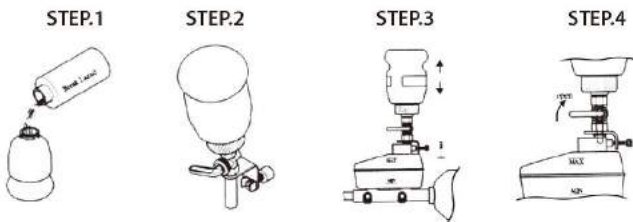
- Change your brake oil is a simple and easy operation if you have the right tools!
- One man in same step clear operation quick and safety!
- 1 Meter silicon hose with universal rubber adaptor, can fit most type brake fitting.



Brake fluid bleeder

SPECIFICATIONS

* Air inlet	1/4"
* AVG. Air cons	2CFM
* Working pressure	40-170PSI
* Max. Capacity	2000cc
* Packing	10/21/22/4.2'
* CTN size	71x51x32CM



- Midget size N.W. then less 1 kg easy carry & operation.
- Pneumatic extractor non-spark.
- One man in same step operate.
- 1 Meter silicon hose with universal rubber adaptor, can fit most type brake fitting.
- Fixing valve & safety cup for automatic cut-off extracting.



A TANK



B TANK



- Change your brake oil is a simple and easy operation if you have the right tools!
- One man in same step clear operation quick and safety!



SPECIFICATIONS

- * Air inlet 1/4"
- * AVG. Air cons 2CFM
- * Working pressure 40-170PSI
- * Temperature range -3°-140°F
- * Max. Capacity 2000cc
- * Packing 12/17/18/4.9'
- * CTN size 57x45x54CM

- Economical - fast and easy, reduces labor costs.
- Versatile - handles most standard and abs brake systems.
- Clean - collects old brake fluid without spillage.
- Quiet - integrated silencer for a quieter working environment.
- 1 Meter silicon hose with universal rubber adaptor, can fit most type brake fitting.

Pneumatic brake oil extractor



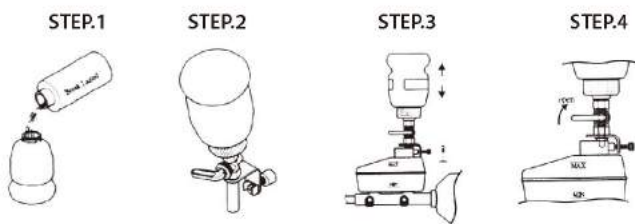
Brake fluid bleeder



SPECIFICATIONS

- * Air inlet 1/4"
- * AVG. Air cons 2CFM
- * Working pressure 40-170PSI
- * Max. Capacity 2000cc
- * Packing 6/12/13/3.5'
- * CTN size 56x56x31CM

- Midget size N.W. then less 1 kg easy carry & operation.
- Pneumatic extractor non-spark.
- One man in same step operate.
- 1 Meter silicon hose with universal rubber adaptor, can fit most type brake fitting.
- Fixing valve & safety cup for automatic cut-off extracting.



- Change your brake oil is a simple and easy operation if you have the right tools!
- One man in same step clear operation quick and safety!

TH59040
TH59041

**6L PNEUMATIC OIL(ATF) & LIQUID DESPENSER
TH59040 + UNIVERSAL FLEXIBLE RUBBER NOZZLE**

PAT.



UNIVERSAL FLEXIBLE RUBBER NOZZLE

SPECIFICATIONS

- * Nylon hose 1M
- * Pu hose w/one touch control gun x 2M
- * 8 Pcs one touch transportation adapter / Blow case
- * Air inlet 1/4"
- * AVG. Air cons 2CFM
- * Working pressure 90 Psi
- * Max. Capacity 6000cc
- * Packing 6/20.5/21.5/5.4'
- * CTN size 64x54x43CM

TH59042
TH59011

**8.5L PNEUMATIC OIL(ATF) & LIQUID DESPENSER
TH59042 + UNIVERSAL FLEXIBLE RUBBER NOZZLE**

PAT.



UNIVERSAL FLEXIBLE RUBBER NOZZLE

SPECIFICATIONS

- * Nylon hose 1M
- * Pu hose w/one touch control gun x 2M
- * 8 Pcs one touch transportation adapter / Blow case
- * Air inlet 1/4"
- * AVG. Air cons 2CFM
- * Working pressure 90Psi
- * Max. Capacity 8500cc
- * Packing 4/14.5/15.5/5.4'
- * CTN size 58x48x55CM

TH59043
TH59044

**10L PNEUMATIC OIL(ATF) & LIQUID DESPENSER
TH59043 + UNIVERSAL FLEXIBLE RUBBER NOZZLE**

PAT.



UNIVERSAL FLEXIBLE RUBBER NOZZLE

SPECIFICATIONS

- * Nylon hose 1M
- * Pu hose w/one touch control gun x 2M
- * 8 Pcs one touch transportation adapter / Blow case
- * Air inlet 1/4"
- * AVG. Air cons 2CFM
- * Working pressure 90Psi
- * Max. Capacity 10000cc
- * Packing 4/19/20/5.4'
- * CTN size 58x48x55CM



Screw valve to allow easy change extract or dispense.



Provide with the safety valve, pre-setting 43 psi(3Bar), the exceed pressure will be relief automatically.



High flow controll valve for extract fluid more quickly.



Provide 2 way controll valve for dispense more safety.



Copper material one touch coupler design for easy operating.



Handle trigger with look.

TH59045 & TH59046

FLUID REFILLER FOR DISPENSER



JS-117A



JS-117B

Operational example

Packing 12/4.5/5.5/1.8'
CTN size 49x37x28CM



Dust cover

Without inclusion

TH59047

PNEUMATIC OIL & LIQUID DISPENSER

PAT.



- * Air inlet 1/4"
- * AVG. Air cons 2CFM
- * Working pressure 40-170PSI
- * Max. Capacity 6000cc
- * Packing 6/14/15/4.3'
- * CTN size 65x42x45CM

- 6000cc 2 in 1 extract & pump dispenser.
- With 1M nylon hose extracting oil tank.
- 1.2M pu hose with super flexible rubber nozzle.
- Fixing valve & safety cup for automatic cut-off extract.
- Suitable for narrow & difficult space filling.
- Simple and easy to operate suitable extracting & filling Non-corrosive liquid.

TH59048

PNEUMATIC OIL & LIQUID DISPENSER WITH SAFETY VALVE & GAUGE

PAT.



- * Air inlet 1/4"
- * AVG. Air cons 2CFM
- * Max. Capacity 6000cc
- * Packing 6/16/17/4.3'
- * CTN size 65x42x45CM

- Provide with the safety valve, pre-setting 43Psi (3kg/cm²) the exceed pressure will be Relief automatically.
- Provide with the pressure gauge, can be read & control the air pressure in the tank more easily.
- 6000cc 2 in 1 extract & pump dispenser.
- With 1M nylon hose extracting oil tank.
- 1.2M pu hose with super flexible rubber nozzle.
- Fixing valve & safety cup for automatic cut-off extracting.
- Suitable for narrow & difficult space filling.
- Simple and easy to operate suitable extracting & filling Non-corrosive liquid.



Operational example



SPECIFICATIONS

* Air inlet	1/4"
* AVG. Air cons	2CFM
* Max. Capacity	6000cc
* Packing	6/12/13/4.3'
* CTN size	65x42x45CM

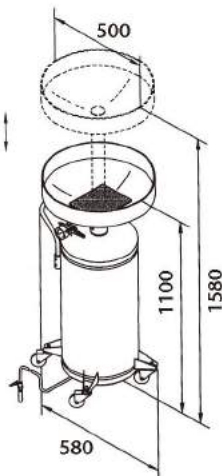
- Suitable size N.W. less than 2 kgs easy carry & operation.
- One man in same step operate.
- Quick and safety to operated washing any car....
- Provide with the safety valve, pre-setting 43 psi(3kg/cm²) the exceed pressure will be relieved automatically.
- Provide with the pressure gauge, can be read & control the air pressure in the tank more easily.



SPECIFICATIONS

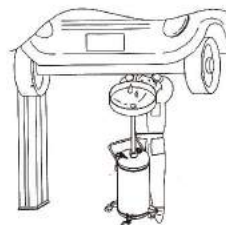
* Air inlet	1/4"
* AVG. Air cons	2CFM
* Working pressure	40-170PSI
* Max. Capacity	6000cc
* Packing	6/15/16/4.6'
* CTN size	65x43x45CM

- 6000cc pump dispenser.
- With 1M nylon Hose.
- 1.2M PU hose with super flexible rubber nozzle.
- Suitable for narrow & difficult space filline.
- Simple and easy to operate filling any liquid.



SPECIFICATIONS

* Item	TH59050	TH59051
* Oil discharge	Pneumatic	
* Container capacity	60L	80L
* Max. height	110CM	
* Extension Max. height	155CM	
* Packing	1/CTN 35/36/9'	1/38.5/39.5/9' (KD包裝)
* CTN size	53x52x85CM	53x52x88.5CM



TH59052

BRAKE BLEEDER (1000CC)

Packing 12/7/8/2'
CTN size 49x36x30CM



TH59053

BRAKE BLEEDER (500CC)

Packing 20/8/9/2'
CTN size 53x22x49CM



Adjustable



TH59054

BRAKE BLEEDER (250CC)

Packing 30/11.5/12.5/1.5'
CTN size 35.5x29x42.5CM



TH59055

PAT.

RADIATOR FLUID REFILLER KIT

Packing 6/4/5/1.8'
CTN size 59x35x25CM



TH59056

PAT.

FLEXIBLE BRAKE BLEEDER

Packing 12/11/12/3.6'
CTN size 56x52x35CM



TH59057

BRAKE OIL RECEIVER

Packing 12/5/6/1.8'
CTN size 48x36x30CM



TH59058

NON-POWER BRAKE OIL RECEIVER (1000CC)

Packing 12/5/6/2'
CTN size 49x36x30CM



TH59059

NON-POWER BRAKE OIL RECEIVER (1000CC)

Packing 12/5/6/1.7'
CTN size 48x36x28CM



TH59060

NON-POWER BRAKE OIL RECEIVER (1000CC)

Packing 12/5/6/1.7'
CTN size 48x36x28CM



- Simple way to release the remained brake oil.
- Silcon hose with hydraulic brake oil check valve & universal rubber adapter, can fit most vehicle brake oil bleeder fitting.



without inclusion

TH59061 8.10.11MM BRAKE BLEEDER WRENCH WITH CHECK VALVE

PAT.

Packing 12/7/8/1.1'
CTN size 51x26x20CM



- Built-in wrench & socket into one convenient makes loosening and tightening easy.
- Ideal for bleeding brake system and hydraulic clutch system without removing the wheels.
- 1.2M silicon hose with check valve for safety operating.
- For universal bleeder nipples.
- Hight quality material internal seal for long life.
- 3 Pcs & hose / Epe / Blow case / shirk

TH59062 8MM BRAKE BLEEDER WRENCH WITH CHECK VALVE
TH59063 10MM
TH59064 11MM

PAT.

Packing 100/13/14/0.6'
CTN size

8MM = Blue
10MM = Gold
11MM = Red



- Built-in wrench & socket into one convenient makes loosening and tightening easy.
- Ideal for bleeding brake system and hydraulic clutch system without removing the wheels.
- 1.2M silicon hose with check valve for safety operating.
- For universal bleeder nipples.
- Hight quality material internal seal for long life.
- 1 Pcs 110gw 1 Pcs/pe + hand card 100/13/14/0.6'

TH59065 8MM BRAKE BLEEDER WRENCH
TH59066 10MM
TH59067 11MM

PAT.

Packing 100/11/12/0.6'
CTN size

8MM = Blue
10MM = Gold
11MM = Red



- Built-in wrench & socket into one convenient makes loosening and tightening easy.
- Ideal for bleeding brake system and hydraulic clutch system without removing the wheels.
- 1M silicon hose
- For universal bleeder nipples.
- Hight quality material internal seal for long life.
- 1 Pcs 90gw 1 Pcs/pe 100/11/12/0.6'

TH59068 HYDRAULIC BRAKE CHECK VALVE

Packing 250/4/4.8/0.65'
CTN size 31x31x18CM



TH59069 BRAKE BLEEDER HOSE SET WITH LOCKING CHACK

Packing 100/13/14/1.8'



TH59070 TORQUE TEST MACHINE

CTN size 28x15x45CM

Max : 50Nm



TH59071 TORQUE TEST MACHINE

CTN size 28x15x45CM

Max : 340Nm



TH59072 TORQUE TEST MACHINE

Packing 1/37.5/38.5/1.3'

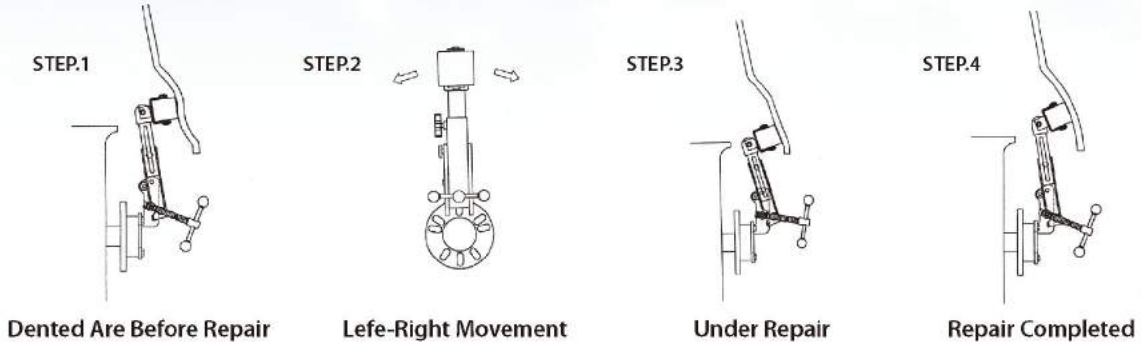
Max : 2000Nm CTN size 33x21x56CM



TH59073 FENDER REFORMING TOOL

PAT.

Packing 2/15.5/16.5/2'
CTN size 49x31x38CM



TH59074 W/2 PCS PAD (120.150MM) AIR DENT PULLER
TH59013 W/3 PCS PAD (60.120.150MM) DENT PULLER

Packing 4/16/17/2.6'
CTN size 35x35x58CM



- With 3lb (1.36 Kgs) sliding hammer.
- With brass shut off valvae.
- With 13" length inlet hose.
- Air exhaust from the handle.
- With 1/4" air plug.



TH59077 7 PCS RUBBLER DOLLY

Packing 3/20.5/21.5/1.7'
CTN size 46x32x29CM



- TH59077-1 heel dolly.
- TH59077-2 long type heel dolly.
- TH59077-3 double end dolly.
- TH59077-4 curved dolly.
- TH59077-5 utility dolly.
(General purpose dolly)
- TH59077-6 double end hand dolly.
- TH59077-7 long type curved dolly.

TH59075 11PCS DENT PULLER ADAPTER SETS



- 1 Pcs dent puller adapter(for TH59074).
- 10 Pcs glue pad.

TH59076 MINE SLIDING HAMMER SET

With 10 Pcs Glue pads

Packing 20/21/22/1.4'
CTN size 35x28x40CM



- With 0.95lb(0.43kgs) sliding hammer.



TH59005 4L MANUAL OPERATION FLUID EXTRACTOR

TH59006 4L PNEUMATIC/MANUAL OPERATION FLUID EXTRACTOR

TH59005



PAT.

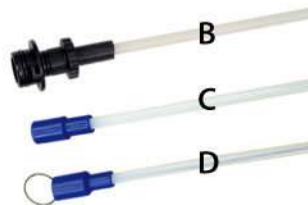
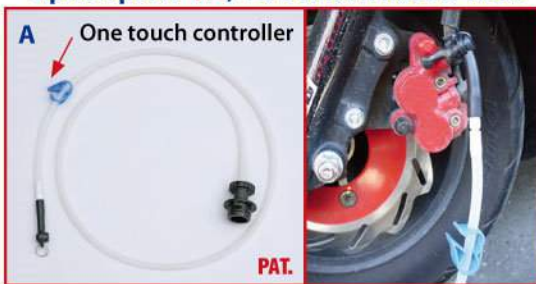
TH59006



PAT.

- Three air outlet with check valve design on handle for easy & quick to release air pressure from the extractor.
 - Easy to operate suitable for engine oil, gear oil, brake fluid, coolant, water...etc.
 - Provide with new decompression valve for easy to release the negative pressure.
 - Fixing valve & safety cup for automatic cut-off extracting.
 - Non-spark, non-power fluid extractor.
 - Include 3 kinds nylon tubes can be extracting and non-corrosive fluid.
- ※ Option parts: "A" 1.5 meter silicon hose with one touch controller & universal rubber adapter, can fits to most type brake fitting.

Option parts "A" , 4 x 8 silicon hose x 1.5m

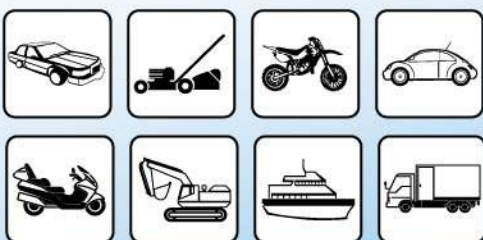
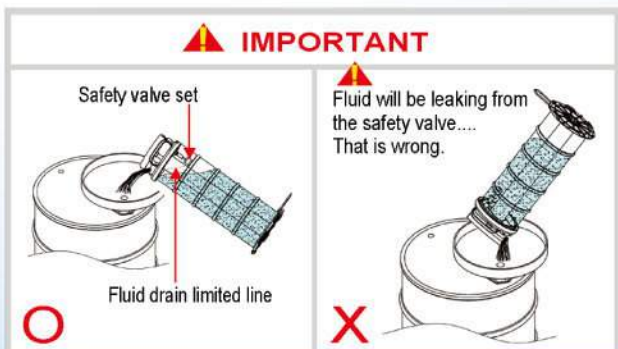


STANDARD ACCESSORIES:

- B : 7.8 x 9.8 Nylon hose x 1M
- C : 5.3 x 6.7 Nylon hose x 1M
- D : 4 x 6 Nylon hose x 1M

SPECIFICATION:

- ★ Air Inlet 1/4"
- ★ AVG.Air cons 2CFM
- ★ Working pressure range 40-170Psi
2.8-11.7Bar. 0.28-1.17Mpa



6.5L MANUAL LIQUID DESPENSER

Manual operation for gear box oil(ATF) or liquid despenser

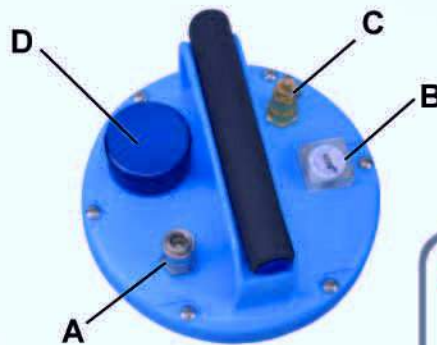
PAT.P

TH59078



SPECIFICATIONS

- * Pu hose w/controller valve x 2M.
- * 8pcs one touch transportation adapter w/blow case.
- * Provide with the pressure gauge can be read & control the air pressure in the tank more easily.
- * Provide with the safety valve,pre-setting 11 psi, the exceed pressure will be relief automatically.
- * Suitable for narrow & difficult space filling.
- * Max.capacity : 6500cc



- A : Oil (ATF) & liquid despenser
- B : Pressure gauge
- C : Safety valve
- D : Liquid inlet



1000CC INTERCOOLER / RADIATOR CLEAN GUN

TH59012



- *Ideal for cleanse radiator with cleaner & clean gun.
 - *Use compressor air for operate more easily.
 - *Provide with control valve can be adjustable the clean gun air flow.
 - *Prevents vehicle overheating & clean in tight,dirty, narrow.....etc. place.
 - *Design for vehicles,truck & construction vehicles.
 - *Particular material install in tank and parts, can be resist the radiator cleaner chemical.
- | | |
|--------------------|-------------|
| *Max.capacity: | 1000cc |
| *Avg.air cons. | 2CFM |
| *Working pressure: | 40---140psi |

TH59301 Vacuum Brake Fluid Bleeder



Dimension	270*230*375 m/m
Weight	2.9 kg

- Capacity: 6L
- Vacuum brake bleeder.
- Removes fluid via bleed nipples to allow bleeding or entire fluid replacement.
- Material: PP

TH59302 Combo Fluid Extractor



Dimension	270*230*630 m/m
Weight	4.5 kg

- Capacity: 9.5L
- Both manual or air.
- Venturi system design to provide excellent performance.

TH59303 Transmission Filling System



Dimension	330*260*650 m/m
Weight	3.5 kg

- Capacity: 9.5L
- Transmission filling system

TH59304 Manual Fluid Dispenser

Dimension	600*230 m/m
Weight	2.37 kg

- Capacity: 9L
- Manual design for easy fluid dispensing.
- Very useful in topping up fluid reservoir.
- Fluid Control valve to shut off dispensing.
- Pressure gauge installed.

TH59305 Stainless Fuel Retriever

Dimension	530*530*1100 m/m
Weight	28.3 kg

- Capacity: 90L
- Air Vacuum.
- Suck in and refill gasoline during maintenamce job.

TH59306**TH59307****Syringe for Vehicle Fluid Change**

Part no.	TH59306	TH59307
Weight	0.294 kg	0.9 kg
Capacity	200 cc	1.5 L
Usage	Brake fluid	Oil

TH59308 Parts Washer



Dimension	350 m/m
Voltage	110V/60Hz
Capacity	3L
Material	PP

TH59601 Utility IN & OUT Fluid Syringe



- Capacity: 350 cc
- Used for any non-corrosive lubricants.
- The flow rate is adjustable.
- Connect different tubes for different functions.

TH59602

TH59603 Fluid Syringe



Part no.	TH59602	TH59603
For	Suction	Discharge
Capacity	1 L	
Usage	Non-corrosive	
Else	Connect any tube for extension use	