



VERTICAL MILLING MACHINE

強力立式銑床



VM-300NC

VM-400 / 500NC

Features 特色

- 動柱式移動主軸: 使用高精度滾柱線軌的座標移動使機器移動更快速、精確
- 交換盤: 因動柱式移動主軸設計，工作台為固定位置，有效提高生產效率且減少機器停滯及上下工件時間
- 高鋼性，高效率，高精度及高可靠性之特殊機台設計
- 強力切削型主軸
- 人性化操作界面: 發那科控制器，觸控式熒幕的易操作人機界面，自我偵錯診斷及錯誤訊息顯示功能
- 六點式剎車定位系統: 提供加工時的穩定切削，降低切削時的震動
- Column-moving spindle: The coordinate movement of the high-precision roller linear rail makes the machine move faster and more precise
- Dual magnet plate: as the worktable is at a fixed position by design of the column-moving spindle, this reduces the time of loading/unloading work piece and non-cutting status which effectively improves production efficiency
- Unique machine design for high rigidity, efficiency, precision and reliable performance
- Heavy duty milling spindle
- HMI user friendly touch screen, with dialogic data input, self alarm diagnosis and alarm message display
- Six-point brake positioning system: reduce cutting vibration and increasing cutting stability during machining

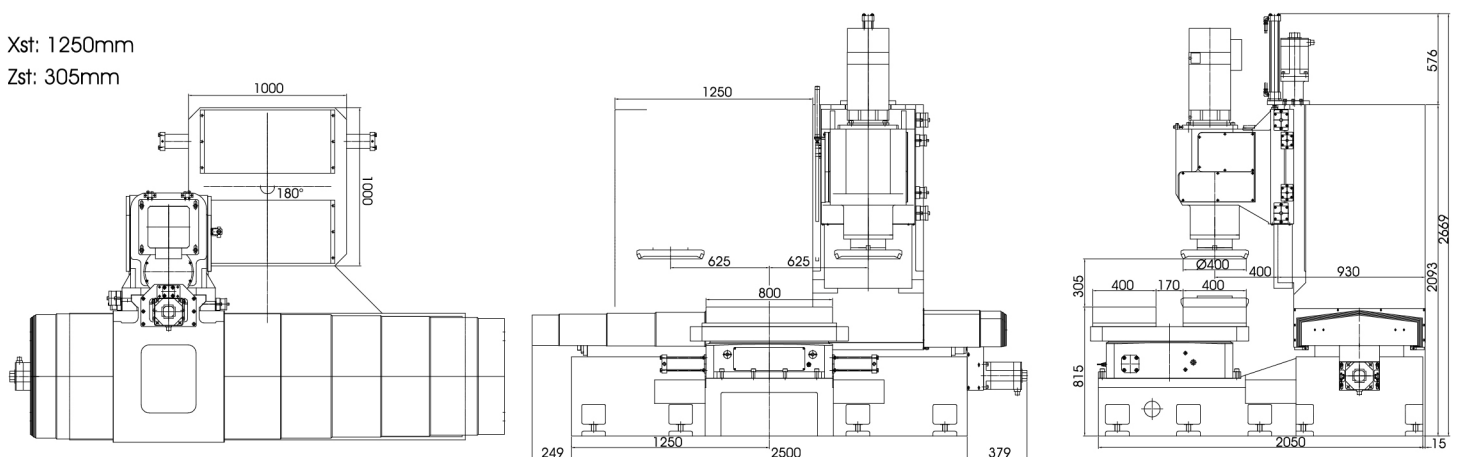
規格表 Specifications

Model	機 型	VM-300NC	VM-400NC	VM-500NC
Cutting capacity 切削能力	最大切削寬度 Cutting Width Max	300 mm	400 mm	500 mm
	最大切削厚度 Cutting Thickness Max		300 mm	
	最小切削厚度 Cutting Thickness Min		5 mm	
Spindle box & spindle 主軸箱及主軸	主軸鼻端至工作台距離 Distance between spindle nose	70~400 mm		
	主軸馬達 Spindle Motor	20 HP	30 HP	
	主軸孔錐度 Spindle Taper	NT-50 equivalent	NT-60 equivalent	
	主軸轉速 Spindle Speed (rpm)	80 ~ 800 rpm	50~250 rpm	
X-axis (Horizontal) Z-axis (Longitudinal) X軸(橫向) Z軸(前縱向)	橫向最大行程 (X軸) Max. horizontal travel(X-axis)	1150 mm	1250 mm	1450 mm
	縱向最大行程 (Z縱向最大行程) Max. longitudinal travel (Z-axis)	320 mm		
	伺服馬達 (X軸) Servo Motor (X-axis)	2.5 kw		
	伺服馬達 (Z軸) Servo Motor (Z-axis)	2.5 kw		
	滾珠導螺桿直徑 (X軸) Dia. of ball screw (X-axis)	Ø50 P10		
	滾珠導螺桿直徑 (Z軸) Dia. of ball screw (Z-axis)	Ø50 P10		
	快速進給 (X軸) Rapid (X-axis)	8 m/min		
快速進給 (Z軸) Rapid feed (Z-axis)	6 m/min			
Work table 工作台 (Magnetic強力磁鐵×2)	單工作台面積 Worktable area (Single)	300 × 600 (mm)	400 × 800 (mm)	480 × 900 (mm)
Index table 旋轉工作台	盤面面積 Dimensions	700 × 700 (mm)	1000 × 1000 (mm)	1100 × 1100 (mm)
Oil tank capacity 油箱容量	油壓單元 Hydraulic unit	100 L		
	潤滑油箱 Lubrication oil tank	2L ×3		
Machine dimension 佔地面積	W×L	3600×4500 (mm)		
N.W淨重	淨 重：包括電控系統 Electrical system included	7.5 tons	8 tons	8.5 tons

* All specifications in the catalogue are subject to change without prior notice / 目錄裡的所有規格如有更動，將不另行通知

選擇配備OPTIONAL EQUIPMENT:

- 250 mm、300 mm、425 mm and 500 mm 銑刀盤Cutter.



Xst: 1250mm
Zst: 305mm



美立固精機廠股份有限公司
PARA MILL PRECISION MACHINERY CO., LTD.

台灣43858台中市外埔區二崁路568巷30號

No.30, Ln. 568, Erkan Rd., Waipu Dist., Taichung City 438, Taiwan.

Tel: 886-4-2680-0678

Fax: 886-4-2680-0587

E-mail: para@paramill.com

https://www.paramill.com