

# Precision Machine Tool Accessories



QC003



QMS 010



ISO 9001 : 2000



Flexible, Fast, Precise

# AUTO SUPER

# AUTO SUPER

## MC Hydraulic & Angle Lock Vise MODEL: BHV



## MC Compact Vise MODEL: BV

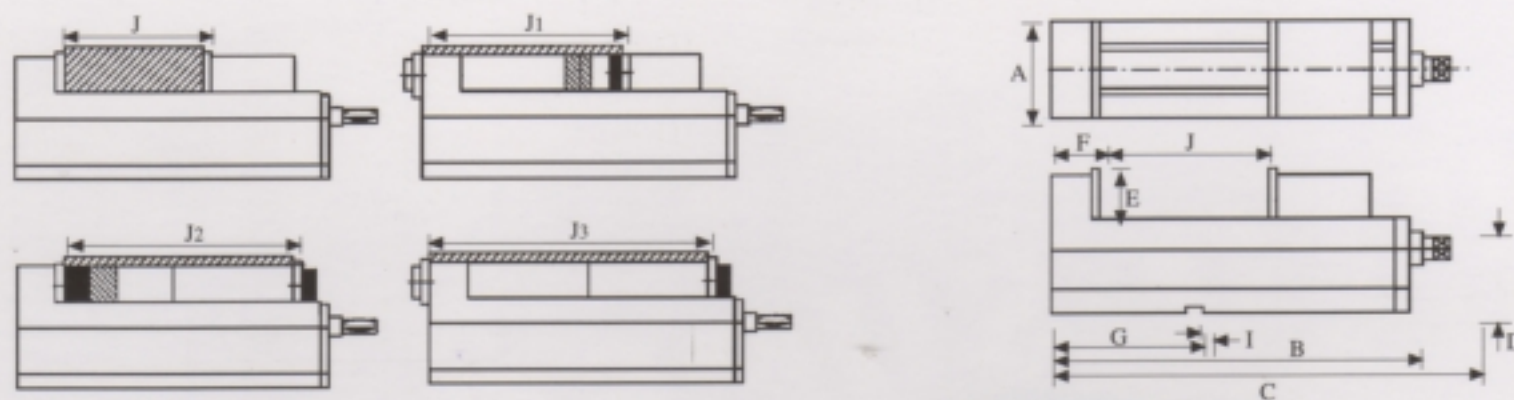


### FEATURES

1. One piece casting of vise bed and flexed jaw.
2. Down thrust "Semis-sphere Segment" mechanism-eliminates jaw life and work tilt.
3. Rigid material-vise body of ductile iron FCD60JIS (equal to GGG60) with 60 kgs/mm<sup>2</sup> or 80,000 psi tensile strength.
4. Vise bed flame with harden treatment up to HRC 45° and up takes up wear and maintain for long.

### Accuracy testing standard

NO	Item	JIS grade 1	Guaranteed		
1	Vise side-lock on bottom slide way square	0.020 100mm	0.010 100mm		
2	Keyways on bottom of vise bed square to clamping surface of jaw plate	0.020 100mm	0.015 100mm		
3	Both jaw plate parallel	0.020 100mm	0.020 100mm		
4	Max opening test block parallel to bottom of Vise body	0.050 100mm	0.030 100mm		
5	Top of rectangular test block clamped tightly by jaw parallel to bottom of vise body	0.030 100mm	0.020 100mm		
6	Surface of vise bed parallel to bottom of vise body	0.020 100mm	0.015 100mm		



### Hydraulic Type

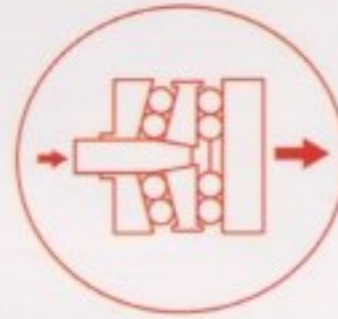
MODEL	A	B	C	D	E	F	G	I	Jaw Opening(Max.)				Clamping Force	Weight Body
									J	J1	J2	J3		
BHV-100V	101	340	470	85	48	80	125	16	125	190	230	320	4000 kgf	27 kgs
BHV-130V	131	405	535	95	55	85	150	18	180	240	290	380	5000 kgf	40 kgs
BHV-160V	161	495	625	105	58	100	165	18	240	320	360	470	6500 kgf	58 kgs
BHV-200V	201	570	700	110	63	108	190	18	280	360	420	540	8000 kgf	87 kgs

### Mechanical Type

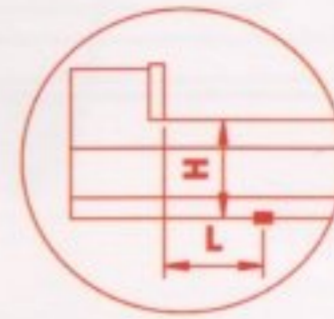
MODEL	A	B	C	D	E	F	G	I	Jaw Opening(Max.)				Weight Body
									J	J1	J2	J3	
BV-100V	101	340	430	85	48	80	125	16	125	190	230	320	26 kgs
BV-130V	131	405	495	95	55	85	150	18	180	240	290	380	39 kgs
BV-160V	161	495	585	105	58	100	165	18	240	320	360	470	57 kgs
BV-200V	201	570	666	110	63	108	190	18	280	360	420	540	86 kgs

# MC Mechanical Power Vise

## MODEL:BMV



Super Power



Paralleling



Angle Lock  
(prevent lifting)

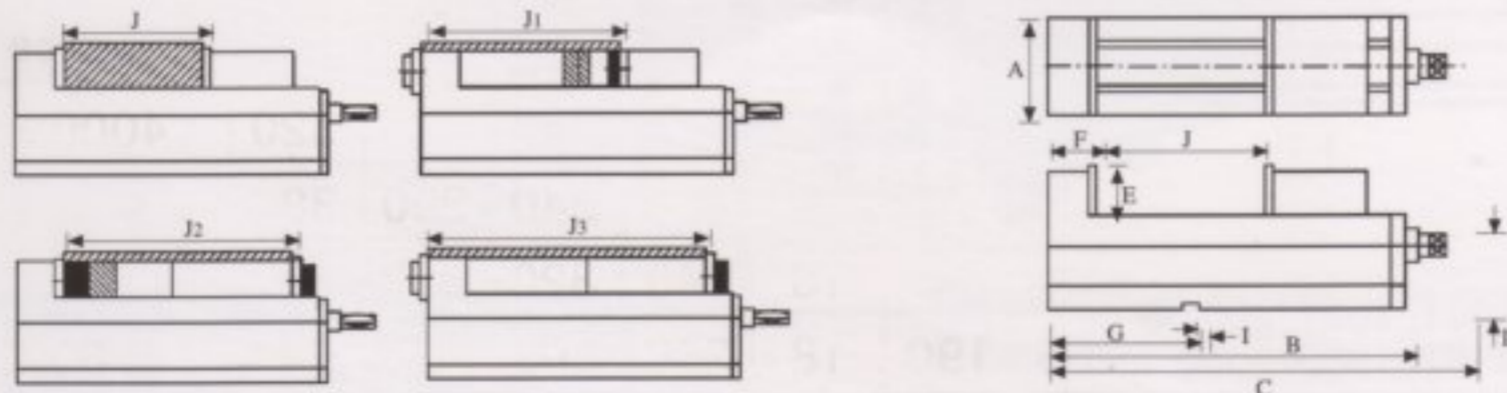
Power vise equips with 8 pcs. support-rollers reaching greater output  
Short body length; Large jaw opening . It permits application of multiple vises.

### FEATURES

1. One piece casting of vise bed and flexed jaw.
2. Down thrust "Semis-sphere Segment" mechanism-eliminates jaw life and work tilt.
3. Rigid material-vise body of ductile iron FCD60JIS (equal to GGG60) with 60 kgs/mm<sup>2</sup> or 80,000 psi tensile strength.
4. Vise bed flame with harden treatment up to HRC 45° and up takes up wear and maintain for long.

### Accuracy testing standard

NO	Item	JIS grade 1	Guaranteed	Diagram	
1	Vise side-lock on bottom slide way square	0.020 100mm	0.010 100mm		
2	Keyways on bottom of vise bed square to clamping surface of jaw plate	0.020 100mm	0.015 100mm		
3	Both jaw plate parallel	0.020 100mm	0.020 100mm		
4	Max opening test block parallel to bottom of Vise body	0.050 100mm	0.030 100mm		
5	Top of rectangular test block clamped tightly by jaw parallel to bottom of vise body	0.030 100mm	0.020 100mm		
6	Surface of vise bed parallel to bottom of vise body	0.020 100mm	0.015 100mm		



### MC Mechanical Power Vise

Unit/mm

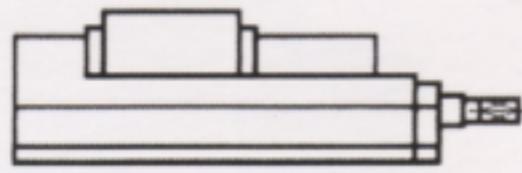
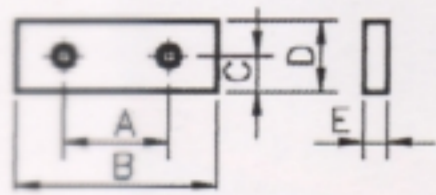
MODEL	A	B	C	D	E	F	G	I	Jaw Opening(Max.)				Clamping Force	Weight Body
									J	J1	J2	J3		
BMV-100V	101	340	470	85	48	80	125	16	145	190	230	320	4000 kgf	27 kgs
BMV-130V	131	405	535	95	55	85	150	18	220	240	290	380	4500 kgf	40 kgs
BMV-160V	161	495	625	105	58	100	165	18	290	320	360	470	5200 kgf	58 kgs
BMV-200V	201	570	700	110	63	108	190	18	330	360	420	540	6500 kgf	87 kgs

# AUTO SUPER

## Optional Jaw Plates For BHV, BV Vise

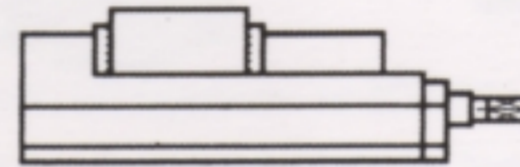
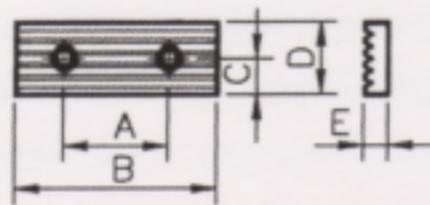
**MODEL: HJ, LJ, VJ, TJ, SJ, FJ**

HJ-100, 130, 160, 200 ●



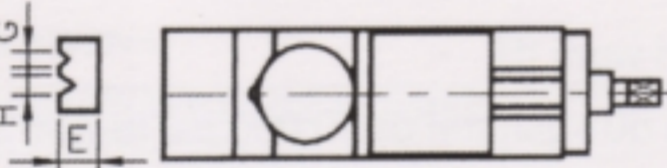
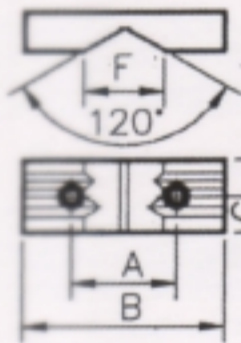
Unit/mm				
HJ	100	130	160	200
A	60	90	90	120
B	100	130	160	200
C	22	25	25	28
D	48	55	58	63
E	15	15	15	18

LJ-100, 130, 160, 200 ●



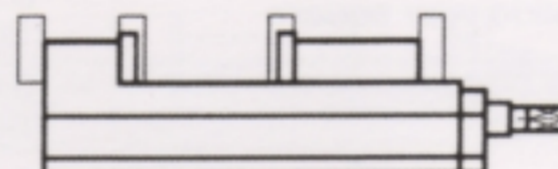
Unit/mm				
LJ	100	130	160	200
A	60	90	90	120
B	100	130	160	200
C	22	25	25	28
D	48	55	58	63
E	15	15	15	18

VJ-100, 130, 160, 200 ●



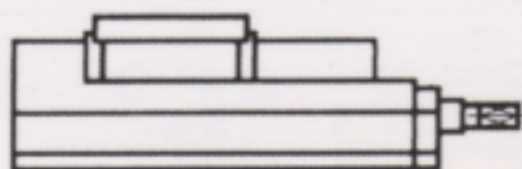
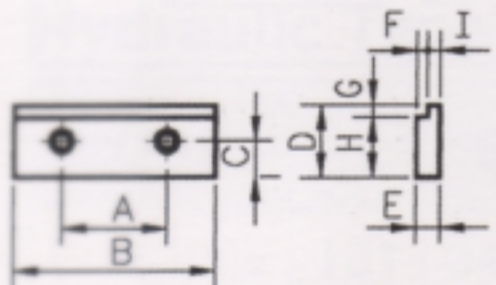
Unit/mm				
VJ	100	130	160	200
A	60	90	90	120
B	100	130	160	200
C	22	25	25	28
D	48	55	58	63
E	30	32	32	40

TJ-100, 130, 160, 200 ●



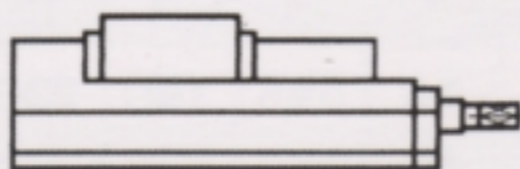
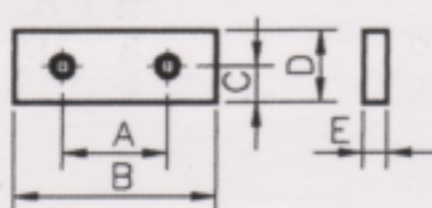
Unit/mm				
TJ	100	130	160	200
A	60	90	90	120
B	100	130	160	200
C	22	25	25	28
D	64	69	74	88
E	21	24	24	31

SJ-100, 130, 160, 200 ●



Unit/mm				
SJ	100	130	160	200
A	60	90	90	120
B	100	130	160	200
C	22	25	25	28
D	48	55	58	63
E	15	15	15	18
F	5	5	5	5
G	5	5	5	5
H	43	50	53	58
I	10	10	10	13

FJ-1001, 1301, 1601, 2001 ●  
 FJ-1002, 1302, 1602, 2002  
 FJ-1003, 1303, 1603, 2003  
 FJ-1004, 1304, 1604, 2004  
 FJ-1005, 1305, 1605, 2005



Unit/mm										
FJ	1001	1002	1003	1004	1005	1301	1302	1303	1304	1305
A	60	60	60	60	60	90	90	90	90	90
B	100	100	100	100	130	130	130	130	130	130
C	22	22	22	22	22	25	25	25	25	25
D	48	63	73	48	63	55	73	103	63	73
E	15	21	23	48	48	15	23	30	48	48
F	M10	M10	M10	M10	M10	M10	M10	M10	M10	M10
FJ	1601	1602	1603	1604	1605	2001	2002	2003	2004	2005
A	90	90	90	90	90	90	90	90	90	120
B	160	160	160	160	160	200	200	200	200	200
C	25	25	25	25	25	28	28	28	28	28
D	58	73	103	63	73	63	103	123	63	102
E	15	23	30	48	48	18	30	37	63	63
F	M10	M10	M10	M10	M10	M12	M12	M12	M12	M12

# Precision Hydraulic & Angle Lock Horizontal Vise

**MODEL:AHV**



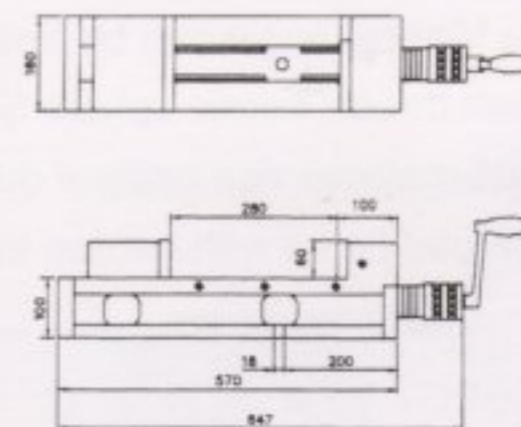
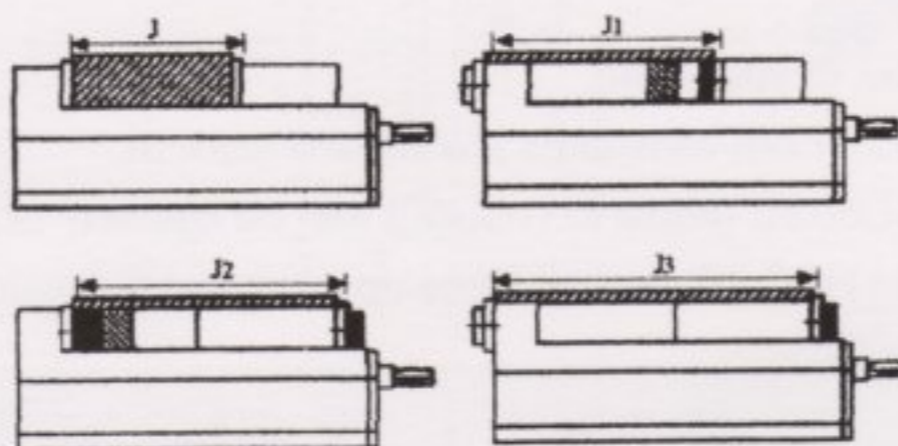
## FEATURES

The unique features of AHV series provide the users an operation of ease and comfort.

1. Angle-lock type Hydraulic vise model:AHV is mostly suitable for heavy duty cutting on Vertical Machining Center.
2. Semi-spherical segment eliminates jaw lift and workpiece tilt.
3. Rigid material ductile iron FCD60 with 60 Kgs/mm ensures high tensile strength, low weariness and not deformation.
4. Vise bed flame hardened to HRC 45 up is capable to obtain low weariness and last the high accuracy for long.
5. For (4) different jaws set up can be obtained.
6. Chip covers is applied on this vise to prevent form chips falling to Leadscrew and inside of vise.

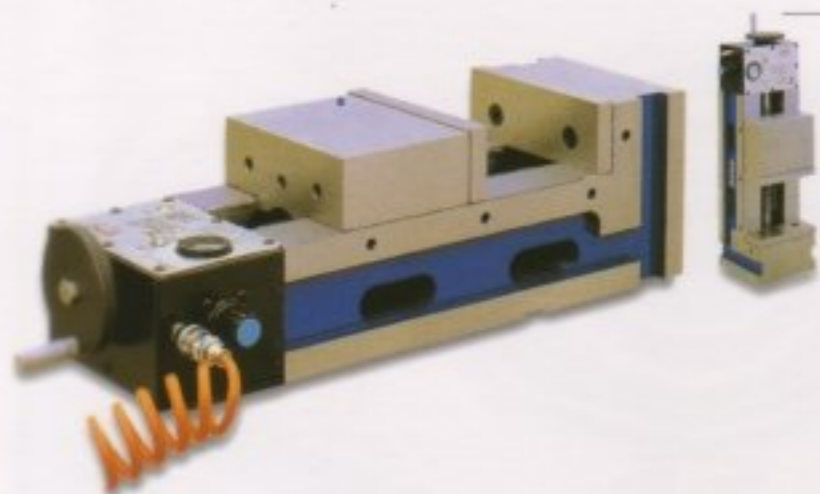
## Specification

Jaw width.....	160mm
Jaw opening.....	280mm
Depth of Jaw.....	60mm
Jaw width.....	160mm
Jaw opening.....	280mm
Depth of Jaw.....	60mm

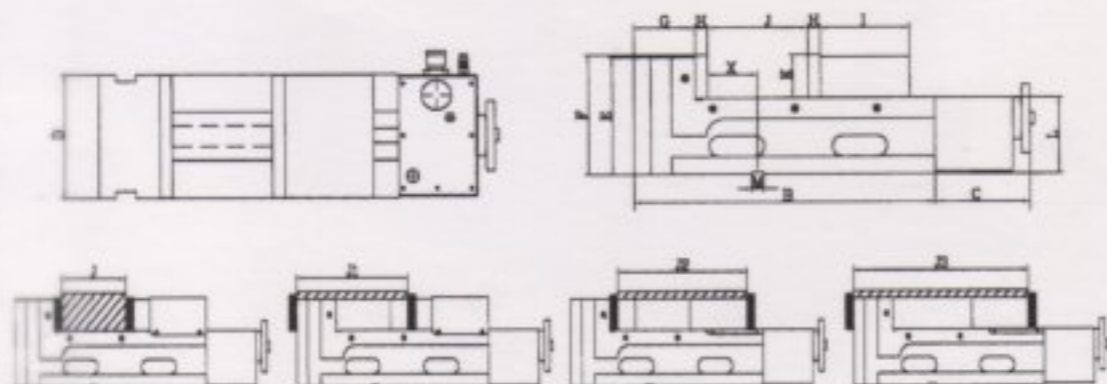
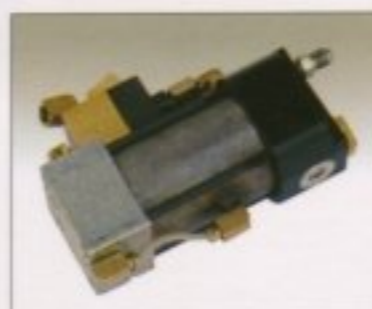


# Pneumatic MC Precision & Angle Lock Vise

**MODEL:APV**



Three properties for standing, sideling, and lying:  
 Custom-built dimensions, the vise in itself is six-sided grinding and the holding down plate tank is reserved in advance.  
 It can be manufactured in upright position without tooling plate.



The principle of this vise is the reciprocating air pressure motor (Patent structure) R&D by ourselves. It achieves the property of automatically batting by means of continuously increasing the pressure to push the oil way.

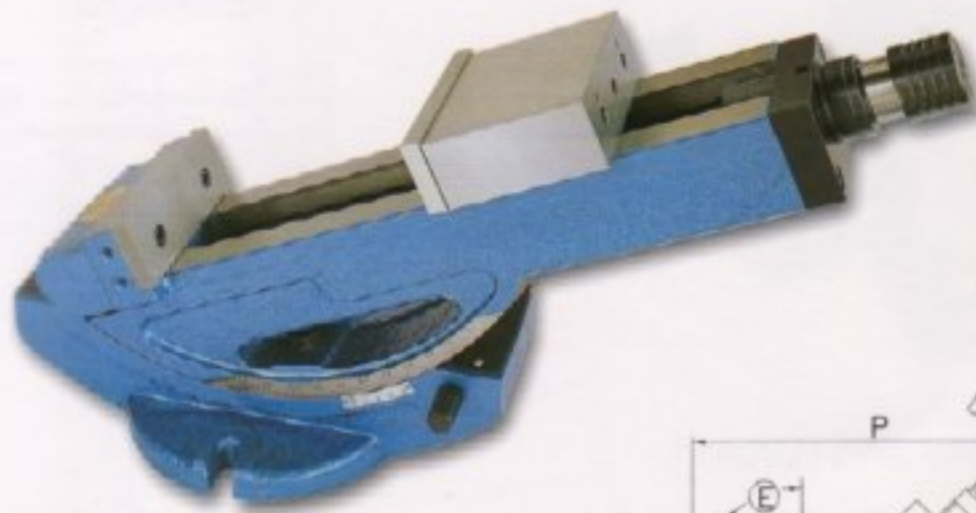
MODEL	A	B	C	D	E	F	G	H	I	J	J1	J2	J3	K	L	M	X	Gruppig	Unit/mm	
																			N.W.(kg)	G.W.(kg)
APV-130V	520	380	140	130	157	160	86	15	110	0-150	95-250	110-275	200-380	55	105	18	45	6000	45	50
APV-160V	540	400	140	160	160	163	86	15	120	0-160	95-250	120-295	210-400	55	105	18	45	6000	47	56
APV-160VS	630	490	140	160	160	163	86	15	120	0-250	95-350	120-395	210-490	55	105	18	45	6000	53	62
APV-180V	600	460	140	180	170	173	90	18	130	0-200	100-300	130-350	220-460	63	110	18	72	9000	65	72
APV-200V	610	470	140	200	170	173	90	18	140	0-200	100-310	140-360	230-470	63	110	18	72	9000	70	80
APV-200VS	710	570	140	200	170	173	90	18	140	0-300	100-410	140-460	230-570	63	100	18	72	9000	79	90

# AUTO SUPER

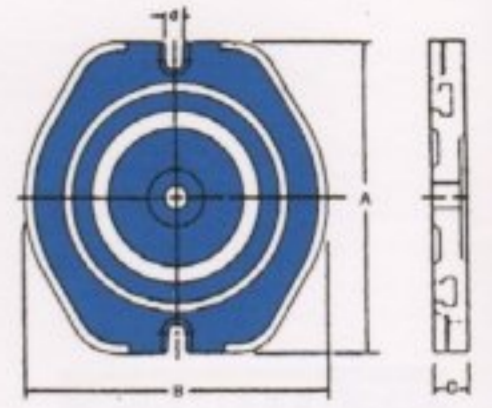
## Big Open Hydraulic & Inclinable Vise

**MODEL: BHT**

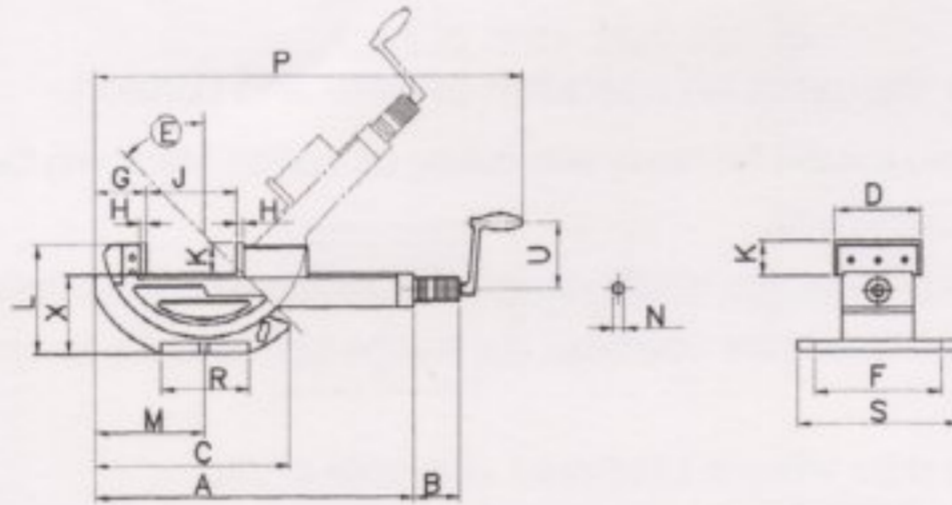
Optional Accessories



Swivel Base



Max.Jaws Opening:  
BHT-160:360mm



MODEL	Unit/mm			
	A	B	C	Weight(kg)
BHT-602	330	310	35	16

### FEATURES

- 1.The Vertical angle can be Setting from 0-50° of your need.
- 2.Down thrust "Semis-sphere Segment" mechanism-eliminates jaw life and work tilt.
- 3.Rigid material-vise body of ductile iron FCD60JIS (equal to GGG60) with 60 kgs/mm<sup>2</sup> or 80,000 psi tensile strength.
- 4.Vise bed frame with harden treatment up to HRC 45° and up takes up wear and maintain for long.

MODEL	Unit/mm																	
	A	B	C	D	E	F	G	H	J	K	L	M	N	P	R	S	U	X
BHT-160	660	100	425	160	50°	185	130	15	9-360	58	248	212	14	870	240	240	130	190

## Hydraulic & Inclinable Vise

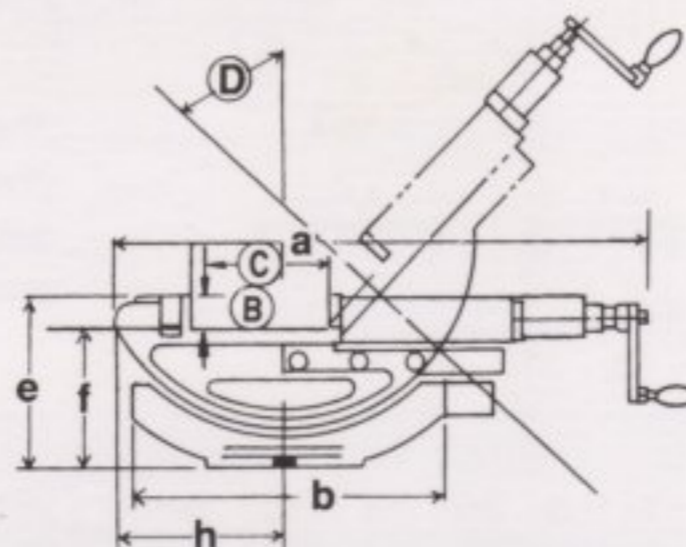
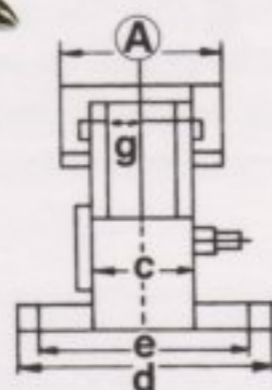
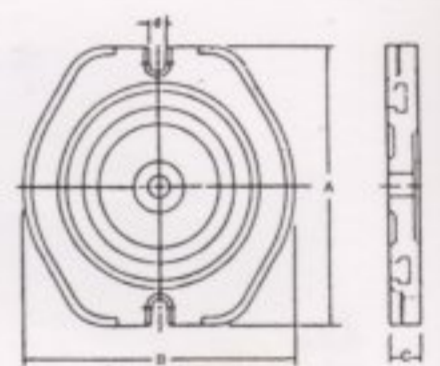
**MODEL:AHT**

Optional Accessories

Different from other conventional milling vise, the angle vise makes angular settings in directions possible. The vertical angle can be setting from 0-50° of your need. Precise angular setting in plan can be read from the mounted scale.



Swivel Base



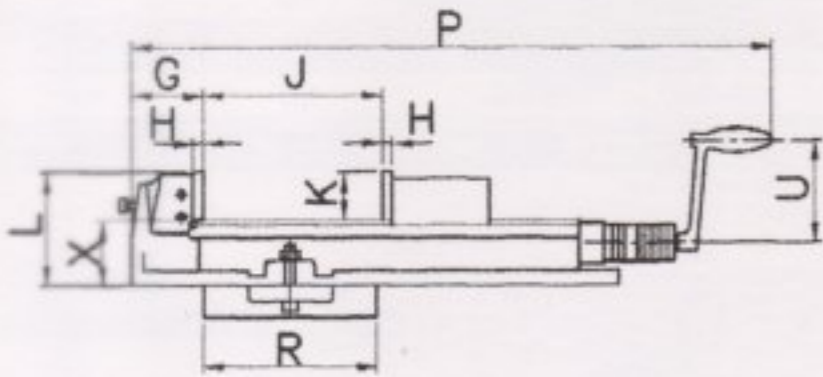
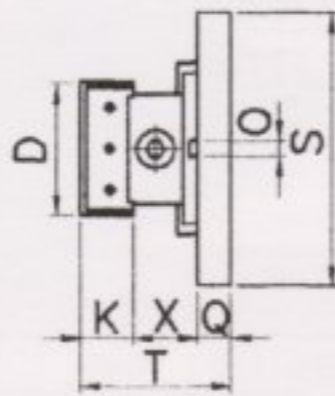
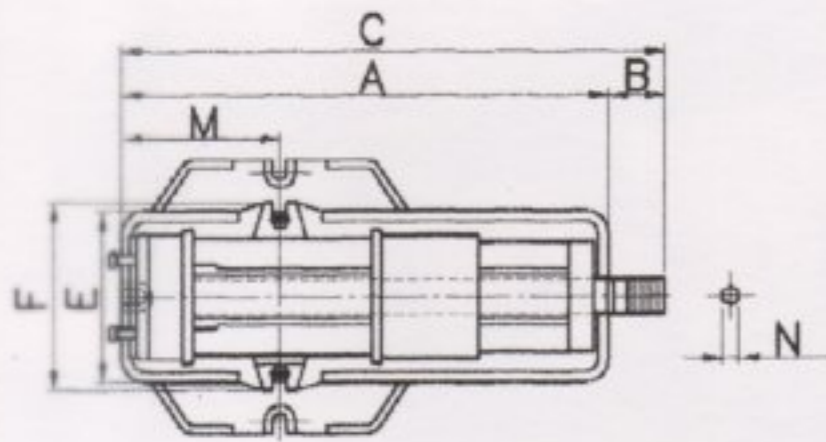
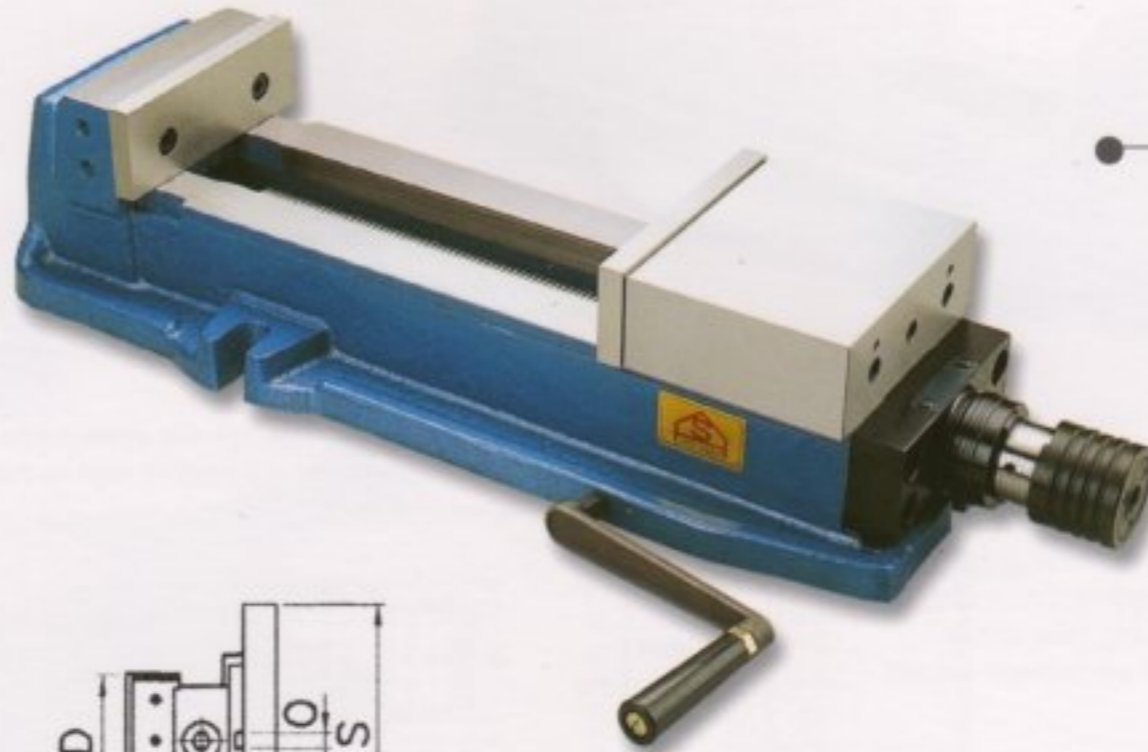
MODEL	Unit/mm			
	A	B	C	Weight(kg)
SB-402	240	222	25	7
SB-602	330	310	35	16

MODEL NO	A	B	C	D	a	b	c	d	e	f	g	h	Max Clamp force (kgf)	Unit/mm	
														Weight(kg)	
														Body	Swivel Base
AHT-4	100	36	0-170	50°	505	325	65	160	177	141	80	184	2500	25	7
AHT-6	150	51	0-300	50°	775	410	95	240	237	186	100	240	4400	67	16

# Max. Opening Hydraulic Vise

## MODEL: BLV

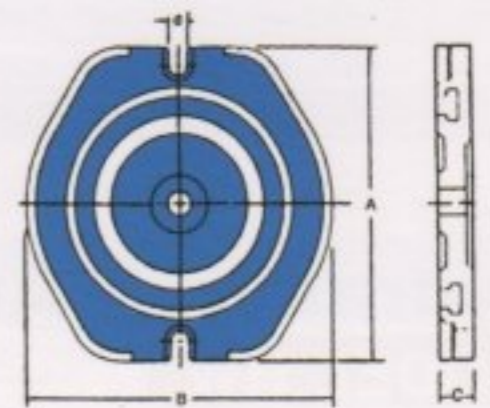
Max.Jaws Opening: ●  
 BLV-160:335mm  
 BLV-200:360mm



### Optional Accessories



Swivel Base



MODEL	Unit/mm			Weight(kg)
	A	B	C	
BLA-160B	280	266	32	12
BLA-200B	330	310	35	16



# Max. Opening Mechanical Machine Vise

## MODEL: LVA

Max.Jaws Opening: ●  
 LVA-160:335mm  
 LVA-200:360mm

MODEL NO	Unit/mm																				
	A	B	C	D	E	F	G	H	J	K	L	M	N	O	P	Q	R	S	T	U	X
BLV-160	600	100	700	160	210	240	100	15	0-335	58	140	190	14	16	810	38	320	340	178	130	82
BLV-200	700	100	800	200	240	280	150	18	0-360	63	163	265	14	18	930	46	365	400	205	130	100
LVA-160	600	66	666	160	210	240	100	15	0-335	58	140	190	19	18	689	38	320	340	178	230	82
LVA-200	700	66	766	200	240	280	150	18	0-360	63	163	265	19	18	780	46	365	400	205	230	100

# AUTO SUPER

## Hydraulic Vise

### MODEL:AH

Hydra. Booster provides a steady clamping force against shocks and vibrations during the operations, since it fastens the work piece resiliently with and aid of the disc-springs mounted inside.

Jaws are made of special steel, which is hardened and ground.

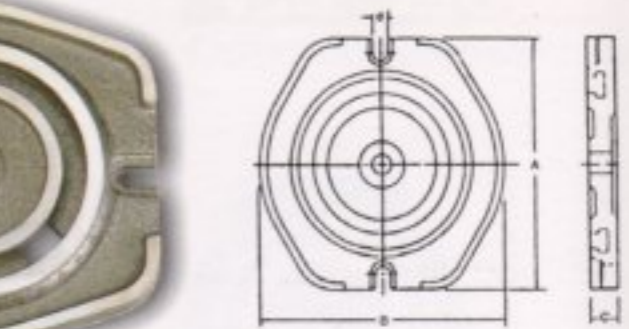
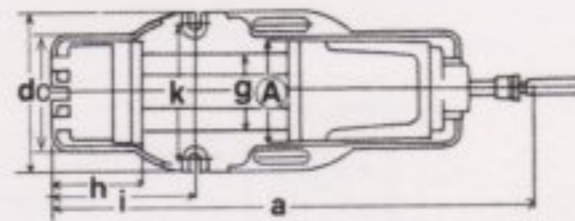
Body is made of high quality cast iron, which resists deflection or bending, and its siding surface flame hardened and ground.



Clamping force may befreely adjusted with this base line as a guide. it magnifies a small force into an enormous clamping force by virtue of its unique Hydra. Booster incorporated.

It makes possible 3-range jaw opening variation where maximum openign attained is 3 times as large as that of normal machine vises.

With hydra. Power Machine Vise, auxiliary wqipument such as a hydraulic pump, hose and air compressor are no longer needed.



Swivel Base

MODEL	Unit/mm			Weight(kg)
	A	B	C	
SB-402	240	222	25	7
SB-502	280	266	32	12
SB-602	330	310	35	16
SB-802	375	355	40	16

MODEL	A	B	C	a	b	c	d	e	f	g	h	i	j	k	Clamping Range			Max Clamping force (kgf)	Weight(kg)	
															X	Y	Z		Body	Swivel Base
															AH-4	100	36	170	525	430
AH-5	125	46	220	670	540	165	185	118	72	97	117	185	341	145	0-72	70-140	195-220	3500	34	12
AH-6	150	51	300	800	620	200	240	133	82	116	125	247	380	200	0-100	98-200	195-300	5000	55	16
AH-8	200	62	300	900	700	240	280	162	100	160	165	266	435	240	0-100	98-200	195-300	8000	90	16

## Hydraulic & Angle Lock Vise

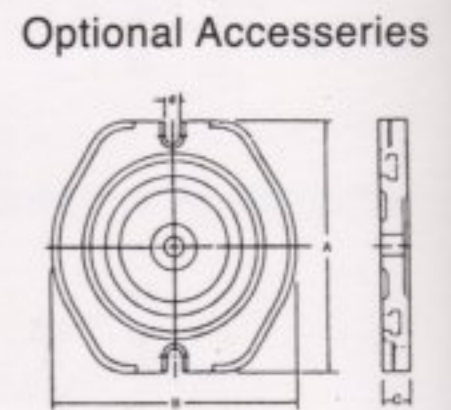
### MODEL:HW

#### FEATURES

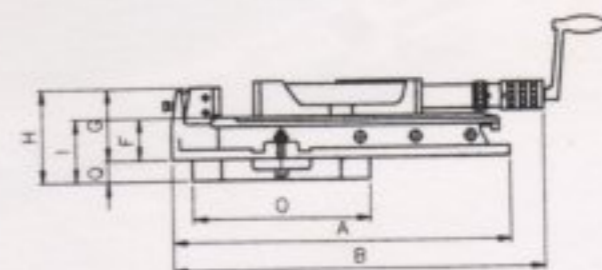
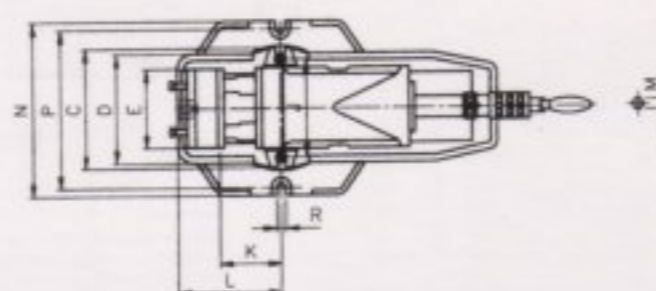
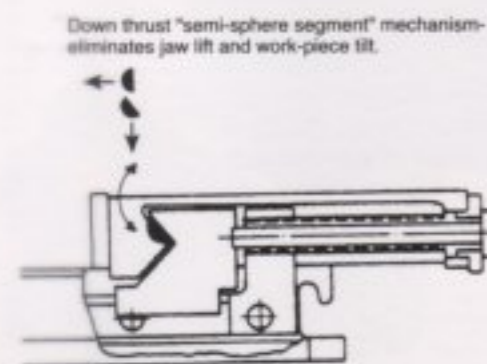
- 1.Rigid material vise body of ductile iron FCD60.
- 2.Down thrust "semi-sphere segment" mechanism-eliminates lift and work tilt.
- 3.Vise bed flame hardened to HRC 45 and up takes up wear and maintain. accuracy for long life.
- 4.Max.hydraulic clamping force....4,000kgs.
- 5.Max.hydraulic & mechanical clamping force...6,000kg.



Swivel Base



MODEL	Unit/mm			Weight(kg)
	A	B	C	
HW-125B	280	266	32	12
HW-160B	330	310	35	16
HW-200B	375	355	40	16



MODEL	A	B		C	D	E	F	G	H	I	J	K	L	M	N	O	P	Q	R	Jaw Width	Jaw Opening	Jaw Depth
		Min	Max																			
HW-125	505	570	795	190	170	130	72	127	106	160	75	180	180	14	280	266	260	32	16	130mm	220mm	55mm
HW-160	605	625	935	240	210	160	82	140	117	192	101	195	195	14	334	320	310	35	18	160mm	310mm	58mm
HW-200	700	725	1035	280	240	200	100	163	146	240	115	265	265	14	420	420	390	50	18	200mm	310mm	63mm



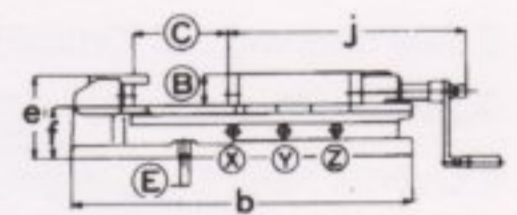
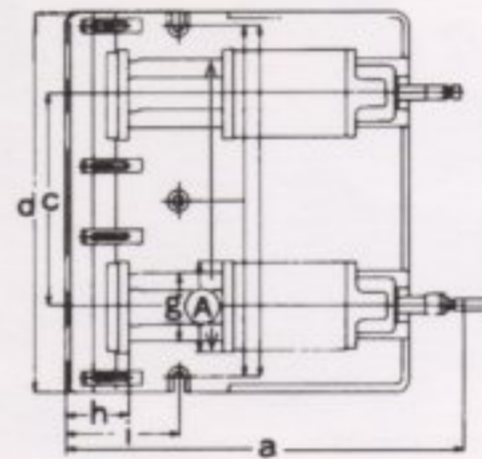
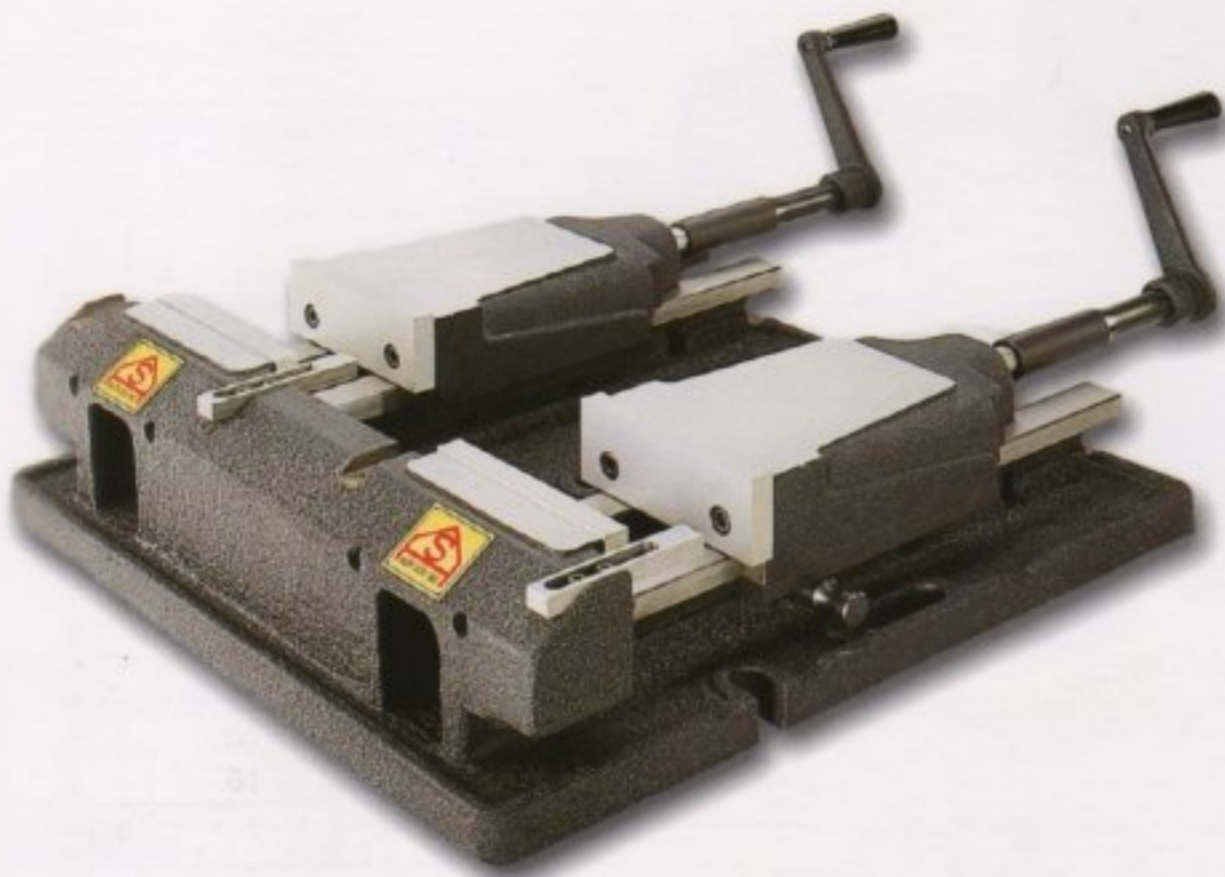
# Hydraulic & Engagement Vise

## MODEL: AHG

### FEATURES

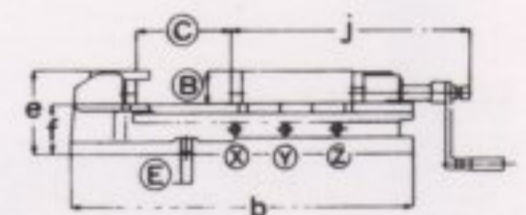
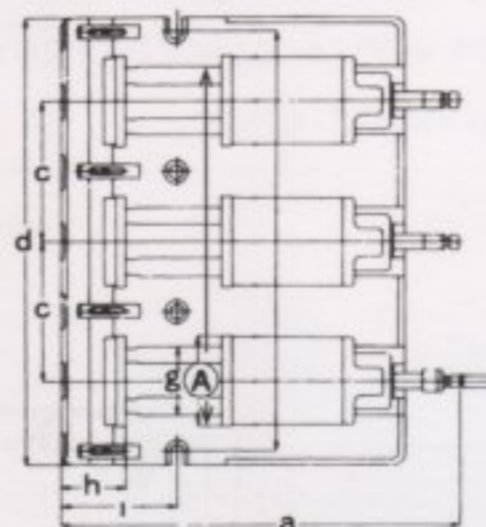
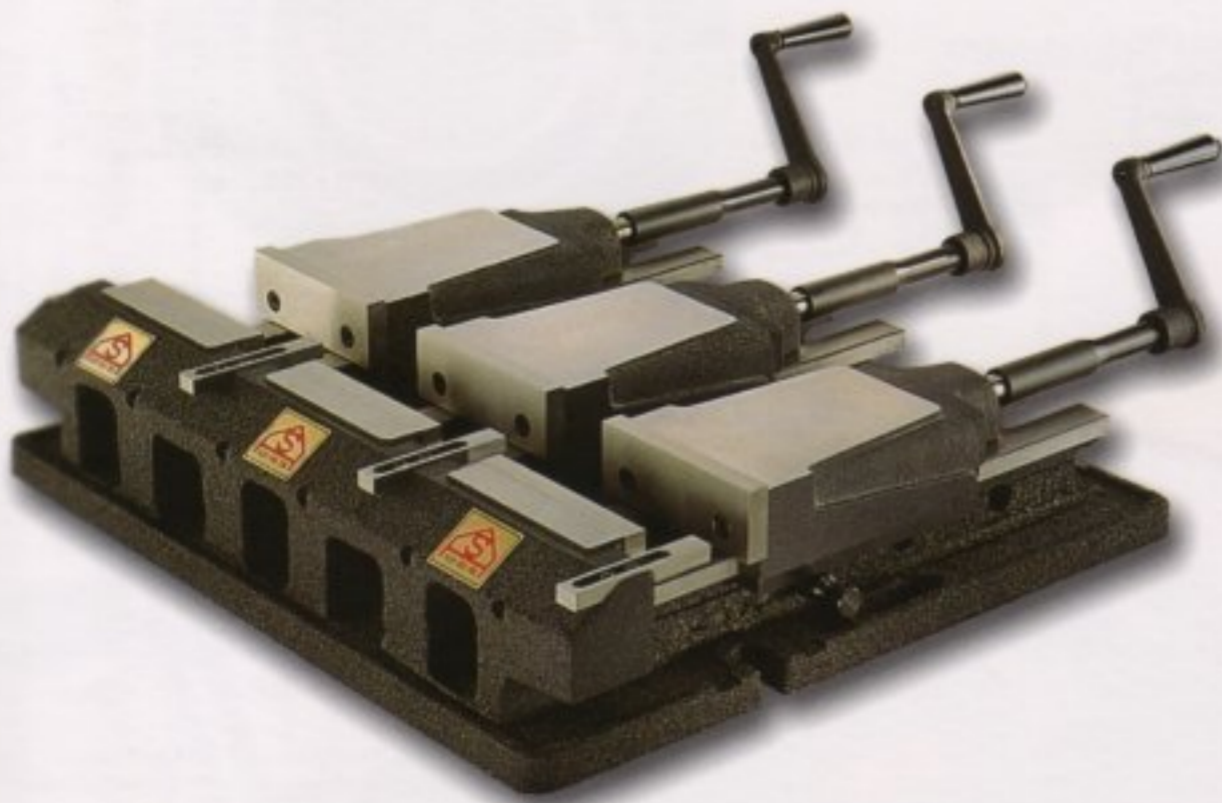
1. The series are more preferable working in Milling Machines, NC & CNC Machines and Maching Centers.
2. These vises can firmly clamp various forms and sizes of workpieces, minizing loading/unloading time.

### AHG-2P-6



MODEL	A	B	C	a	b	c	d	e	f	g	h	i	Clamping range X	Clamping range Y	Clamping range Z	Clamping force (kg)	Unit/mm
																	Weight (kg)
AHG-2P-6	484	51	300	807	610	330	550	510	139	116	127	205	0~100	98~200	198~300	5000	145

### AHG-3P-6



MODEL	A	B	C	a	b	c	d	e	f	g	h	i	Clamping range X	Clamping range Y	Clamping range Z	Clamping force (kg)	Unit/mm
																	Weight (kg)
AHG-3P-6	594	51	300	807	610	220	660	620	139	116	127	205	0~100	98~200	198~300	5000	215

# AUTO SUPER

## Heavy Duty Precision Vise

**MODEL:KR**

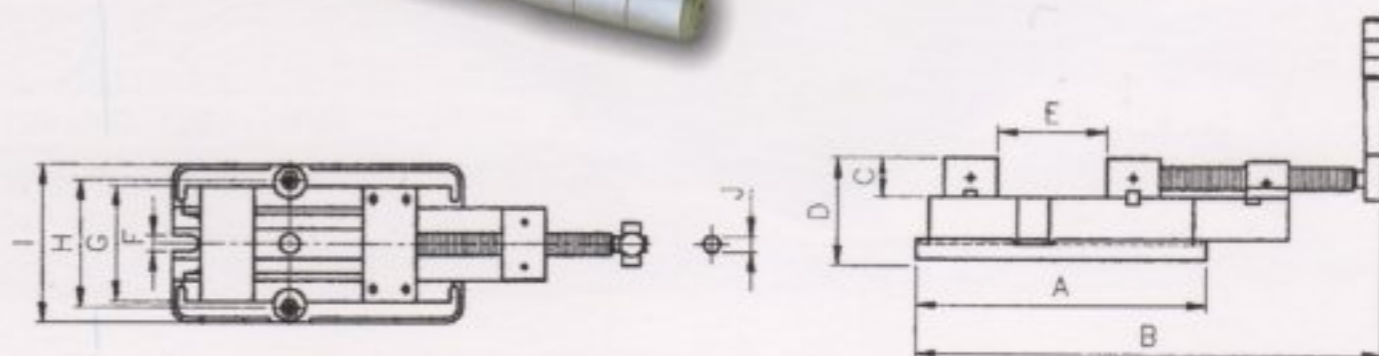
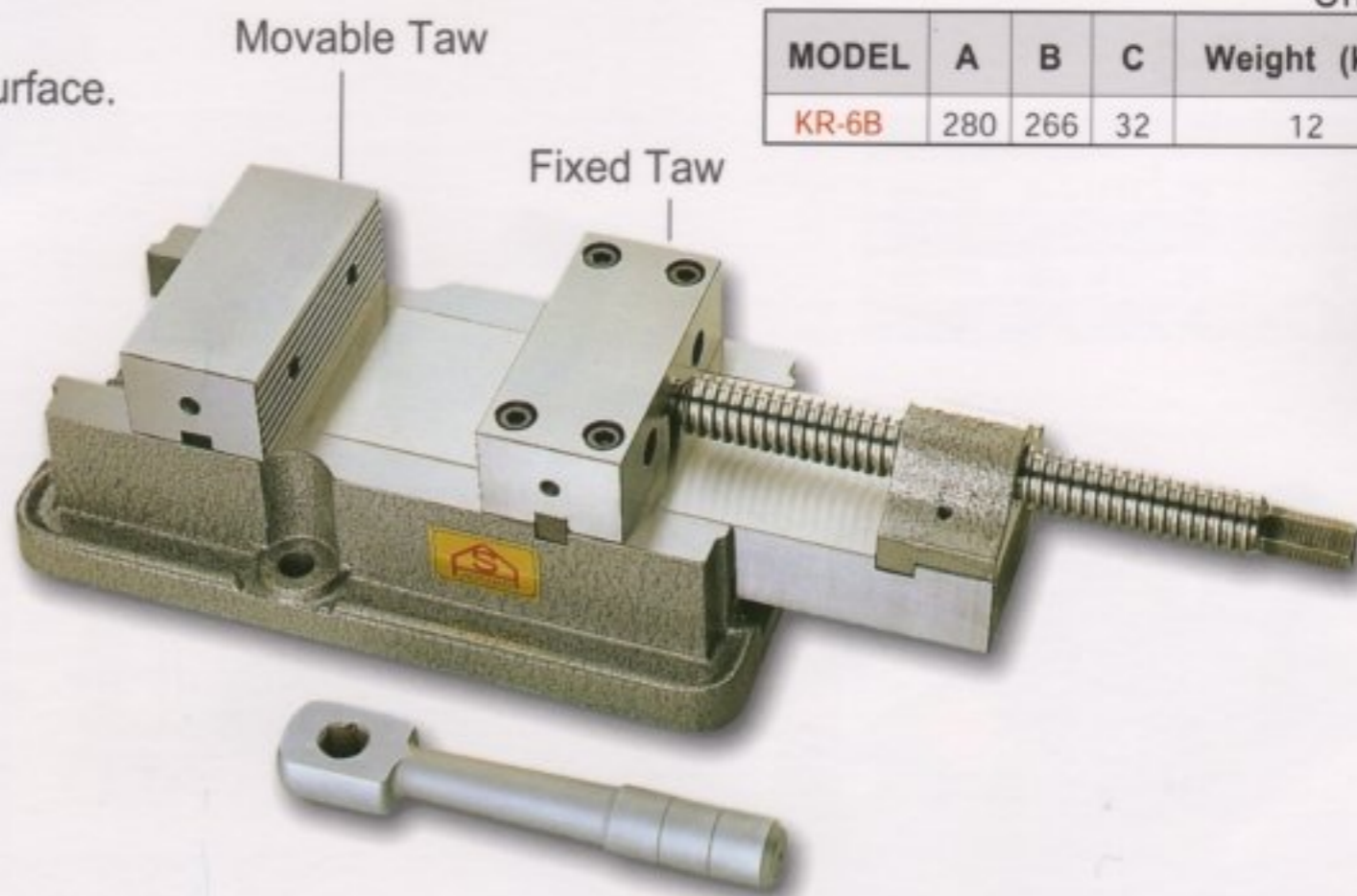
### FEATURES

1. Stationary front jaw.
2. The back jaw moves along with the slide reducing the tendency towards deflection preventing the workpieces from tilting.
3. Jaws and body are steel construction.
4. Hardend & ground on all sliding and contacting surface.
5. Ideal for CNC application.

### FEATURES

1. Jaw width....145mm(6")
2. Jaw opening....210mm(8-1/2")
3. Jaw depth....48mm(1-7/8")
4. Overall height....127mm(5")
5. Net weight(w/o swivel base)....40kgs

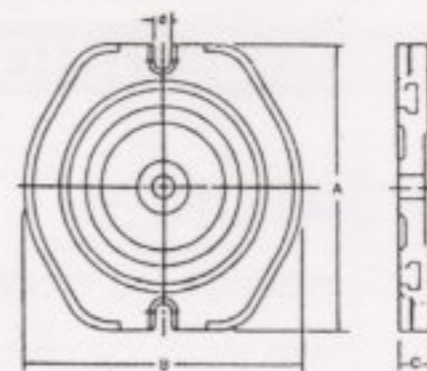
MODEL	A	B	C	D	E	F	G	H	I	J
KR-6	360	630	48	127	210	18	145	160	198	19



Optional Accessories



Swivel Base



Unit/mm

MODEL	A	B	C	Weight (kgs)
KR-6B	280	266	32	12

## A-Type Milling Vise

**MODEL:AT**

### FEATURES

1. Vice body made from high grade iron for rigidity.
2. Low overall height.
3. Moving Jaw runs in long prismatic slides with provision for wear adjustment.
4. Hardened and ground steel jaw plates supplied as standard.
5. Totally enclosed ACME screw with phosphor bronze nut.
6. Supplied complete with drop forged handle.
7. Adjustable positioner.
8. Optional Swivel base.

Optional Accessories



Swivel Base  
MODEL:AT-150B

MODEL:AT-150

### SPECIFICATION

Width of jaws	150 mm
Max jaw opening	165 mm
Depth of jaws	50 mm
Overall size of base	440x220 mm
Overall height	100 mm
Clamp bolt centres	195x395 mm
Nett Weight(kg)	35 mm

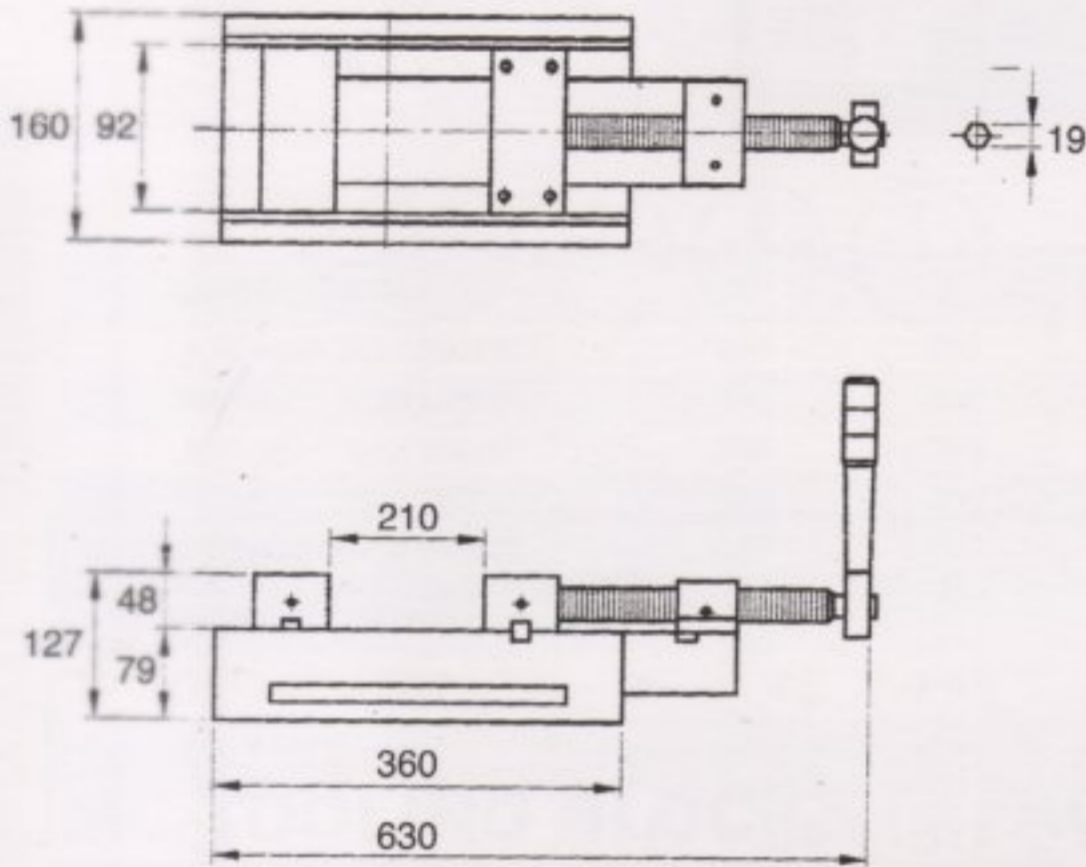


# Heavy Duty Precision Horizontal Vise

## MODEL:KR-6G

### FEATURES

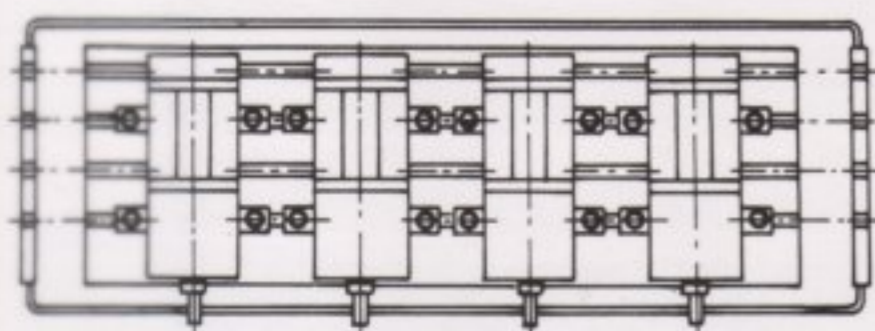
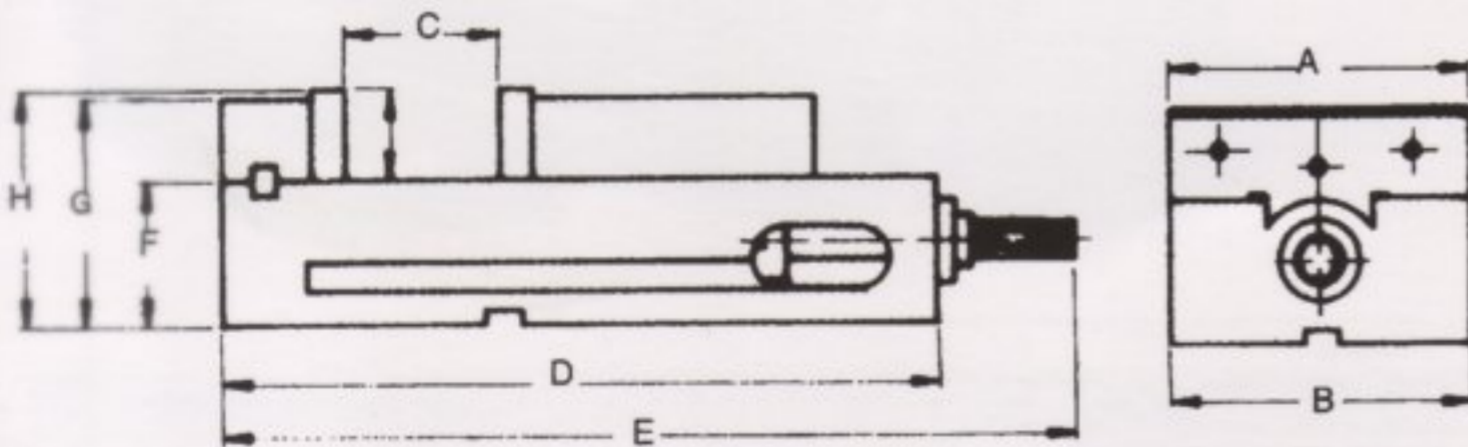
1. Stationary front jaw.
2. The back jaw moves along with the slide reducing the tendency towards deflection preventing the workpieces from tilting.
3. Jaws and body are steel construction.
4. Hardend & ground on all sliding and contacting surface.
5. Ideal for CNC application.



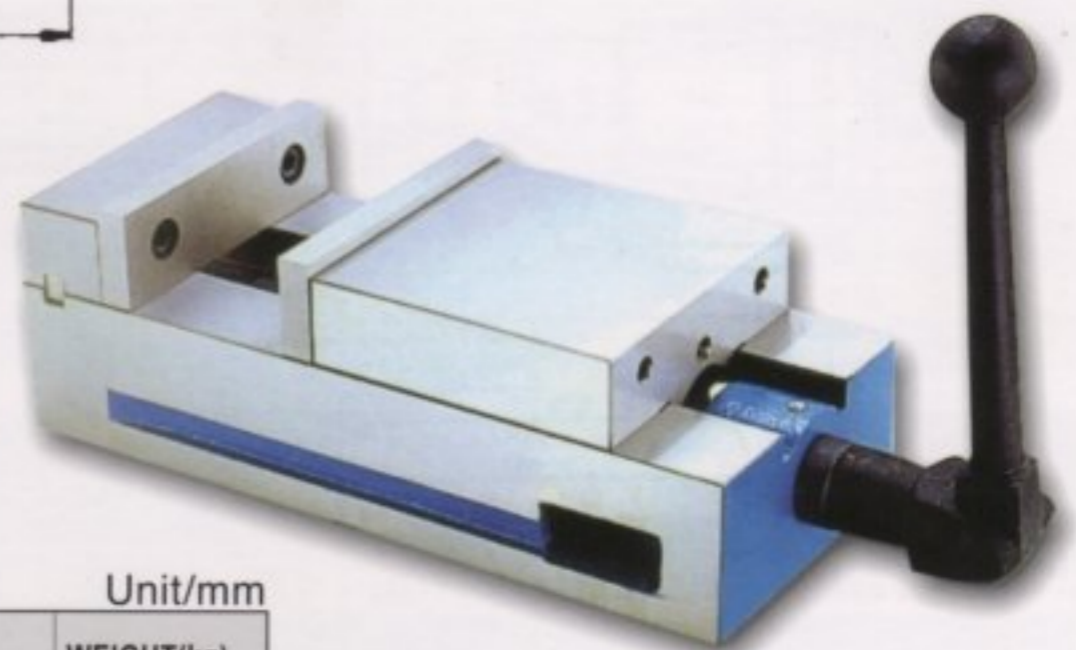
# Horizontal Angle Lock Vise

## MODEL:CR

- A: With the ability of lock-fixed III 2,3,4,5...  
 B: Use the semi-sphere segment principle.  
 C: When operate several vises (in a row) put on one machining bed, the using situation is showed as following:



performed jointly



MODEL	JAW WIDTH	LENGTH	HEIGHT	JAW HEIGHT	JAW OPENING	KEY	WEIGHT(kg)
CR-4	101.6	343	89	31.5	100	14	14
CR-6	152.5	435	110	44	145	16	31

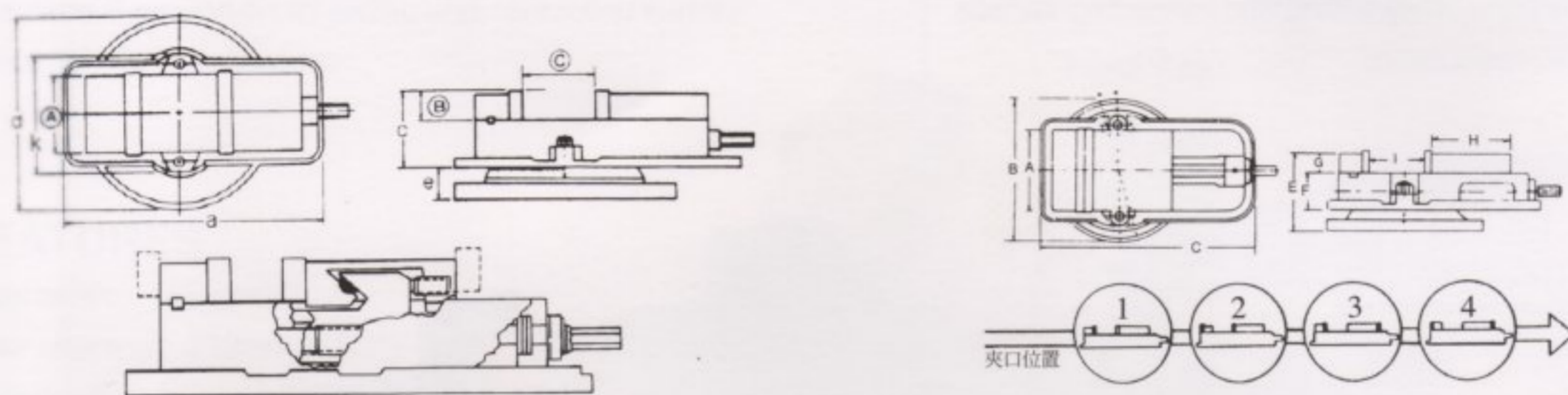
Unit/mm

# AUTO SUPER

## Precision Angle Lock Vise

### MODEL:CH

- 1.The vice-plate position will be varified and increased the useage range according to the following.
- 2.The bed of vice is treated with hardness and the plate with heat and grinding.



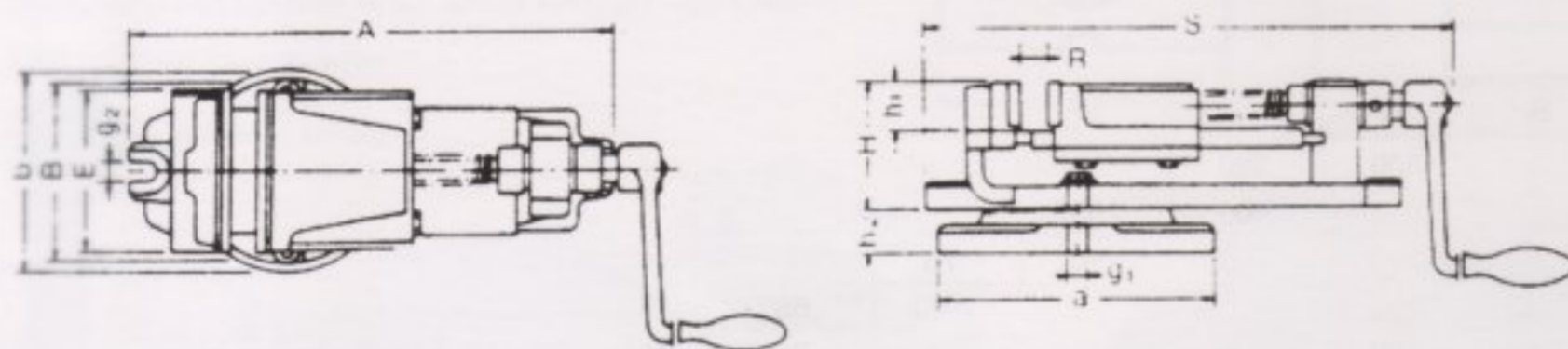
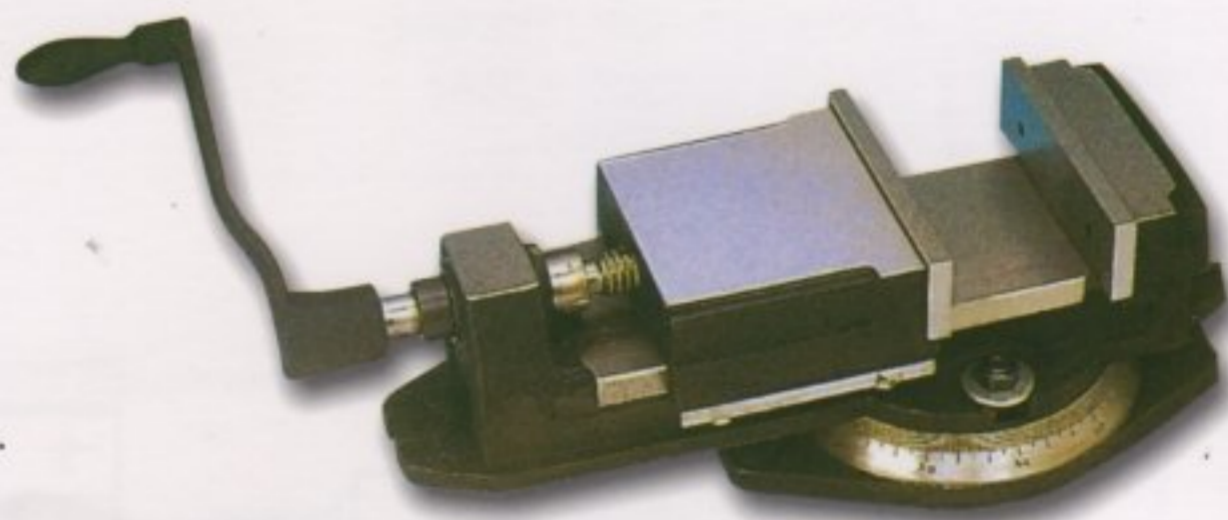
MODEL	A	B	C	a	k	c	d	e	f	Gross weight (kg)	
										plain	with
CH-4	102	36	103	325	165	96	243	31	6	16	20
CH-6	152	46	142	418	209	119	328	39	9	36	42
CH-8	200	62	197	548	295	147	416	45	11	70	80

Unit/mm

## K-Type Milling Vise

### MODEL:KV

- 1.Body, movable jaw and swivel base made of close-grained high tensile iron casting.Built for heavy dute machining and retained accuracy.
- 2.Jaw plates of hardened and ground tool steel.
- 3.It's the most suitable for the Milling, Grinding and Drilling.



MODEL	E	A	B	H	R	S	a	b	h1	h2	g1	g2	G.W(kg)
KV-4	100	267	106	75	62	295	160	114	30	25	13	13	10
KV-6	150	421	160	105	114	462	245	175	40	40	16	16	27
KV-8	200	576	215	144	150	620	340	230	58	45	18	18	57

Unit/mm

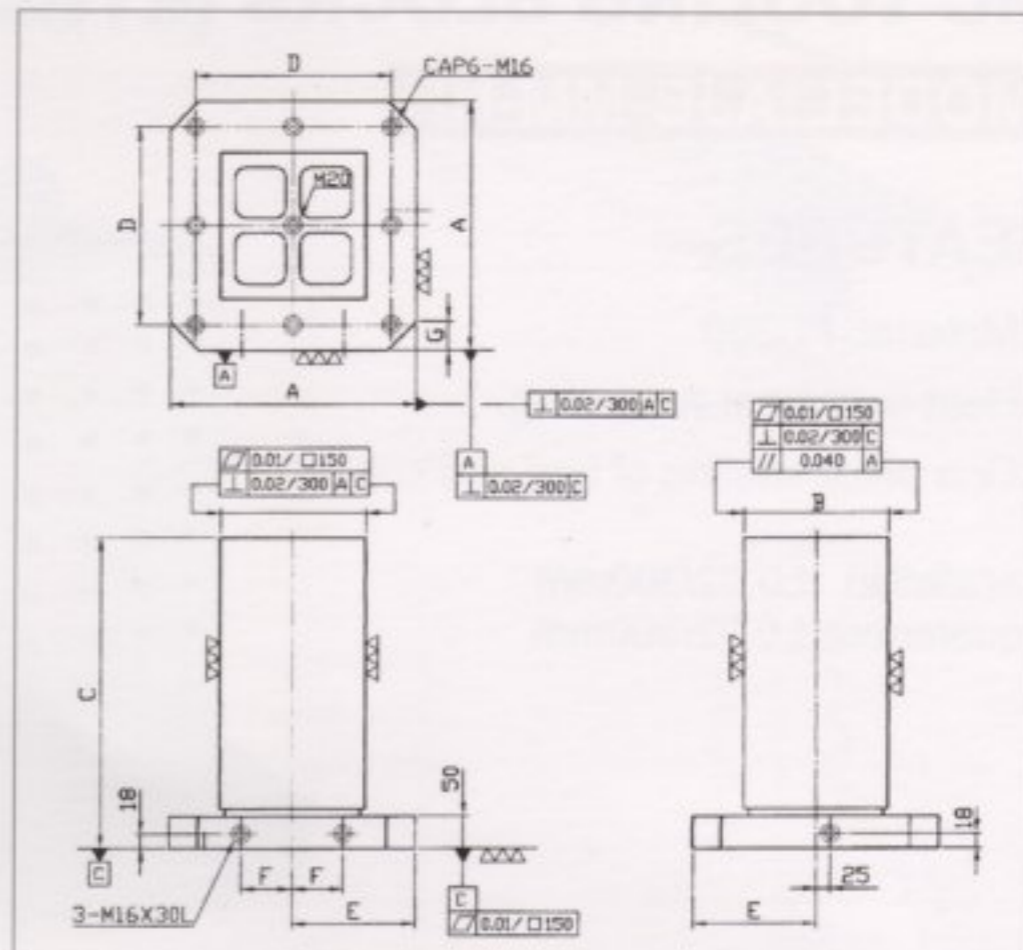
# MC TOOLING BLOCKS (4 FACE TYPE)

## MODEL:AJB-HB

### FEATURES

1. Material: FC300
2. Heat-treatment-Annealing
3. One piece casting of bed and column.

Parallelism  $\pm 0.02/300\text{mm}$   
Squareness  $\pm 0.02/300\text{mm}$



MODEL/ORDER NO.	A	B	C	D	E	F	G	N.W.	REMARK
AJB-400×250×500HB	400	250	500	320	200	55	50	213	
AJB-500×300×600HB	500	300	600	400	250	75	60	293	
AJB-500×350×550HB	500	350	550	400	250	75	60	365	
AJB-630×350×700HB	630	350	700	500	315	100	65	473	
AJB-630×400×700HB	630	400	700	500	315	100	65	522	
AJB-630×500×700HB	630	500	700	500	315	100	65	575	
AJB-800×550×850HB	800	550	850	640	400	135	80	835	

Unit/mm

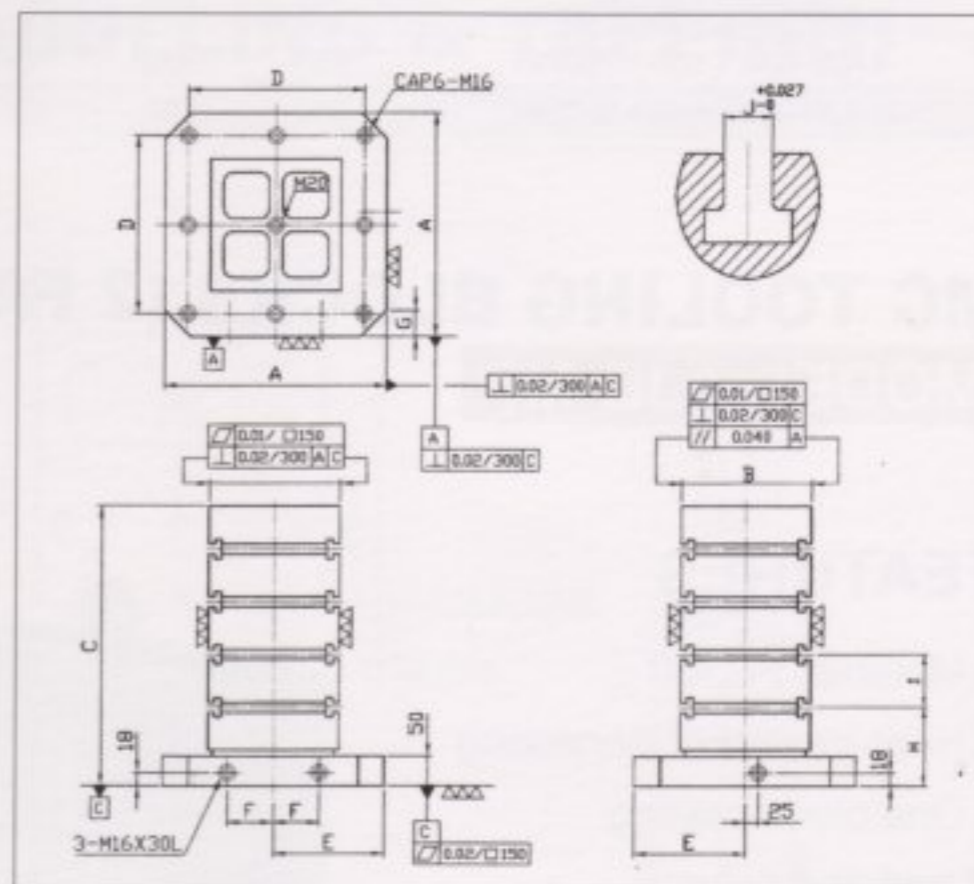
# MC TOOLING BLOCKS (4 FACE TYPE-T-SLOTS)

## MODEL:AJB-TT-TL

### FEATURES

1. Material: FC300
2. Heat-treatment-Annealing
3. One piece casting of bed and column.

Parallelism  $\pm 0.02/300\text{mm}$   
Squareness  $\pm 0.02/300\text{mm}$



MODEL ORDER NO.	A	B	C	D	E	F	G	H	I	J	N.W.	REMARK
AJB-400×250X500TT	400	250	500	320	200	55	50	150	100×4	14	210	
AJB-500×300X600TT	500	300	600	400	250	75	60	150	100×5	14	290	
AJB-500×350X550TT	500	350	550	400	250	75	60	150	100×4	14	362	
AJB-630×350X700TT	630	350	700	500	315	100	65	150	100×5	14	470	
AJB-630×400X700TT	630	400	700	500	315	100	65	150	100×5	14	515	
AJB-630×500X700TT	630	500	700	500	315	100	65	150	100×5	14	595	
AJB-800×550X850TT	800	550	850	640	400	135	80	150	100×5	14	951	
AJB-400×250X500TL	400	250	500	320	200	55	50	150	100×4	18	209	
AJB-500×300X600TL	500	300	600	400	250	75	60	150	100×5	18	289	
AJB-500×350X550TL	500	350	550	400	250	75	60	150	100×4	18	360	
AJB-630×350X700TL	630	350	700	500	315	100	65	150	100×5	18	468	
AJB-630×400X700TL	630	400	700	500	315	100	65	150	100×5	18	513	
AJB-630×500X700TL	630	500	700	500	315	100	65	150	100×5	18	592	
AJB-800×550X850TL	800	550	850	640	400	135	80	150	100×5	18	947	

Unit/mm

# AUTO SUPER

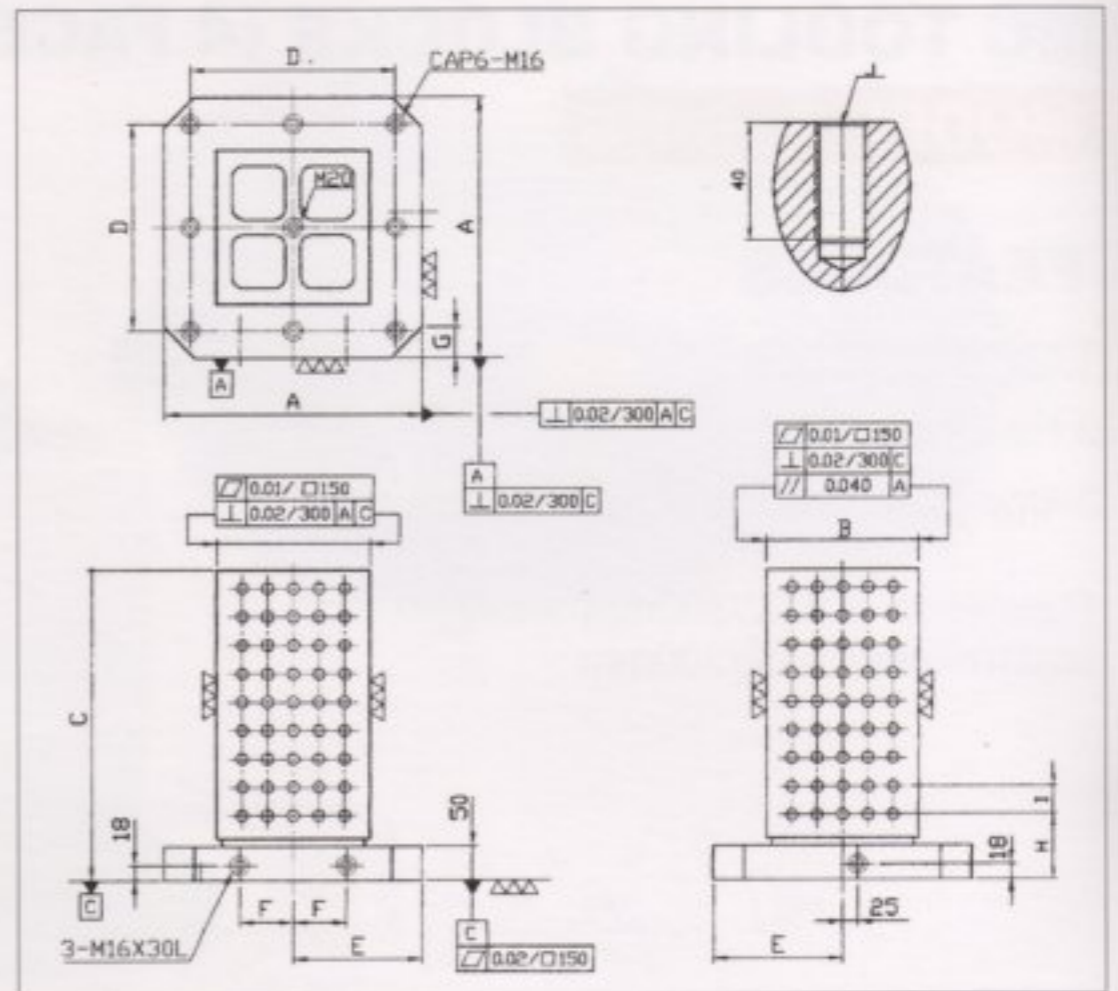
## MC TOOLING BLOCKS (4 FACE TYPE)

### MODEL:AJB-MM-HH

#### FEATURES

1. Material: FC300
2. Heat-treatment-Annealing
3. One piece casting of bed and column.

Parallelism  $\pm 0.02/300\text{mm}$   
Squareness  $\pm 0.02/300\text{mm}$



MODEL ORDER NO.	A	B	C	D	E	F	G	H	I	J	N.W.	REMARK
AJB-400×250×500MM	400	250	500	320	200	55	50	125	50	M12-4×8×4	205	
AJB-500×300×600MM	500	300	600	400	250	75	60	125	50	M12-5×10×4	285	
AJB-500×350×550MM	500	350	550	400	250	75	60	125	50	M12-6×9×4	357	
AJB-630×350×700MM	630	350	700	500	315	100	65	125	50	M12-6×12×4	465	
AJB-630×400×700MM	630	400	700	500	315	100	65	125	50	M12-7×12×4	510	
AJB-630×500×700MM	630	500	700	500	315	100	65	125	50	M12-9×12×4	590	
AJB-800×550×850MM	800	550	850	640	400	135	80	125	50	M12-10×15×4	900	
AJB-400×250×500HH	400	250	500	320	200	55	50	125	50	M16-4×8×4	204	
AJB-500×300×600HH	500	300	600	400	250	75	60	125	50	M16-5×10×4	284	
AJB-500×350×550HH	500	350	550	400	250	75	60	125	50	M16-6×9×4	355	
AJB-630×350×700HH	630	350	700	500	315	100	65	125	50	M16-6×12×4	463	
AJB-630×400×700HH	630	400	700	500	315	100	65	125	50	M16-7×12×4	508	
AJB-630×500×700HH	630	500	700	500	315	100	65	125	50	M16-9×12×4	587	
AJB-800×550×850HH	800	550	850	640	400	135	80	125	50	M16-10×15×4	942	

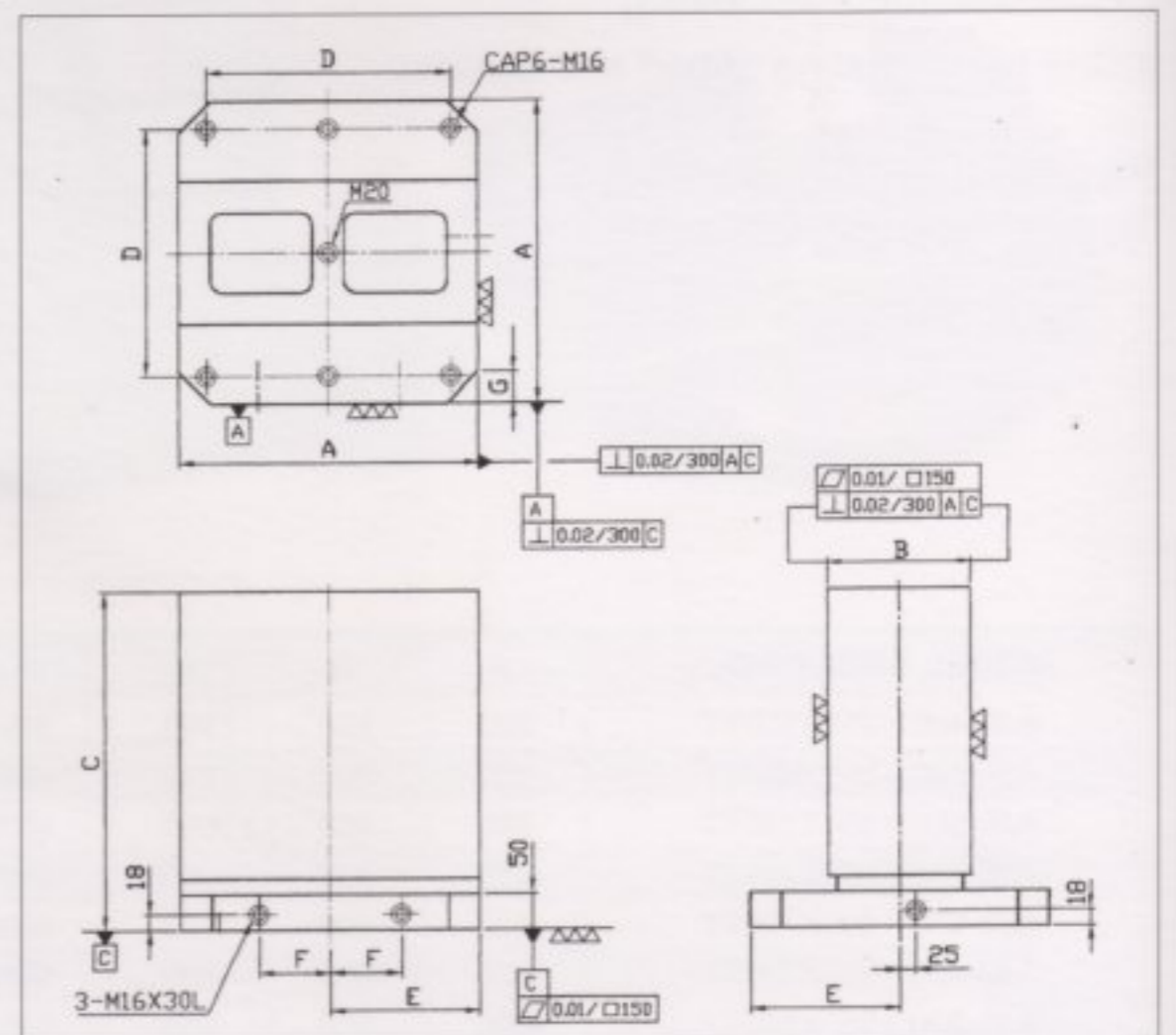
## MC TOOLING BLOCKS (2 FACE TYPE)

### MODEL:AJB-MP

#### FEATURES

1. Material: FC300
2. Heat-treatment-Annealing
3. One piece casting of bed and column.

Parallelism  $\pm 0.02/300\text{mm}$   
Squareness  $\pm 0.02/300\text{mm}$



MODEL ORDER NO.	A	B	C	D	E	F	G	N.W.	REMARK
AJB-400X150X500MP	400	150	500	320	200	55	50	213	
AJB-500X200X600MP	500	200	600	400	250	75	60	365	
AJB-630X250X700MP	630	250	700	500	315	100	65	523	
AJB-800X300X800MP	800	300	800	640	400	135	80	865	

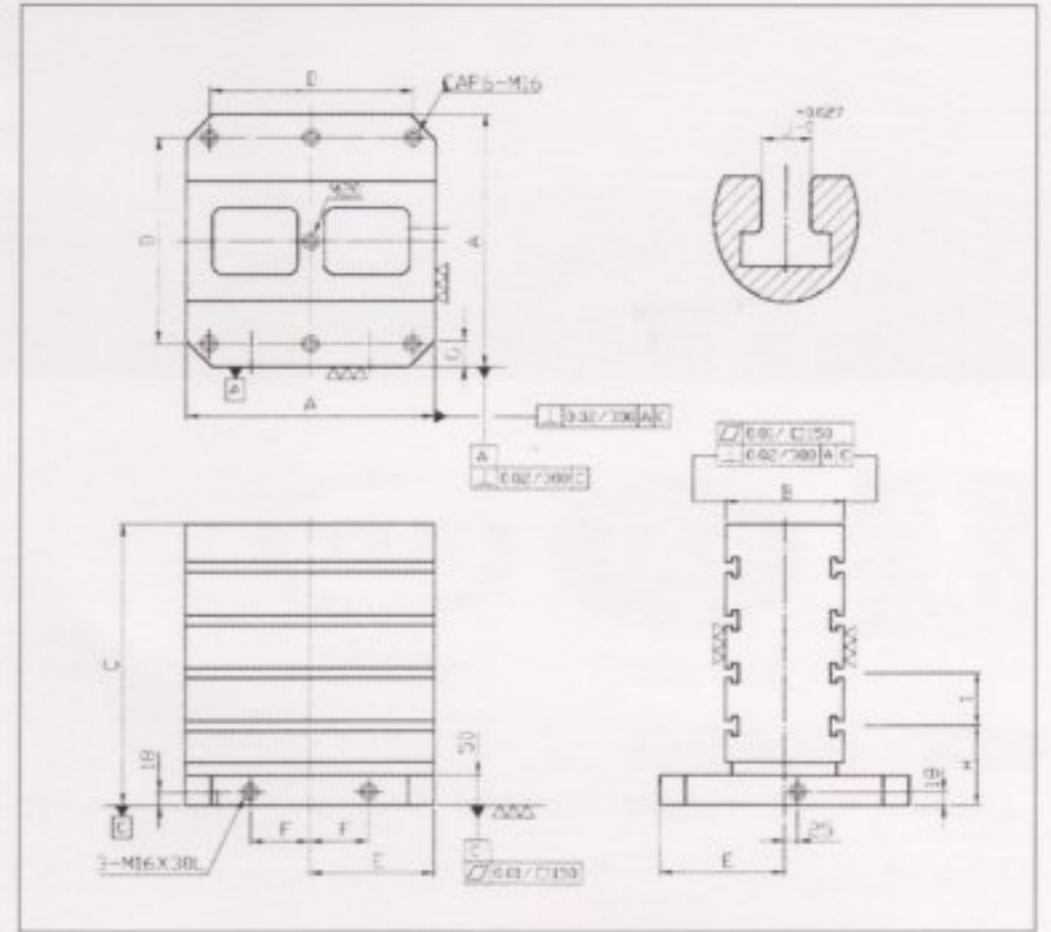
# MC TOOLING BLOCKS(2 FACE TYPE-T-SLOTS)

## MODEL:AJB-TR-TS

### FEATURES

- 1.Material: FC300
- 2.Heat-treatment-Annealing
- 3.One piece casting of bed and column.

Parallelism  $\pm 0.02/300\text{mm}$   
Squareness  $\pm 0.02/300\text{mm}$



Unit/mm

MODEL ORDER NO.	A	B	C	D	E	F	G	H	I	J	N.W.	REMARK
AJB-400×150×500TR	400	150	500	320	200	55	50	150	100×4	14	209	
AJB-500×200×600TR	500	200	600	400	250	75	60	150	100×5	14	360	
AJB-630×250×700TR	630	250	700	500	315	100	65	150	100×5	14	517	
AJB-800×300×800TR	800	300	800	640	400	135	80	150	100×5	14	855	
AJB-400×150×500TS	400	150	500	320	200	55	50	150	100×4	18	208	
AJB-500×200×600TS	500	200	600	400	250	75	60	150	100×5	18	358	
AJB-630×250×700TS	630	250	700	500	315	100	65	150	100×5	18	513	
AJB-800×300×800TS	800	300	800	640	400	135	80	150	100×5	18	852	

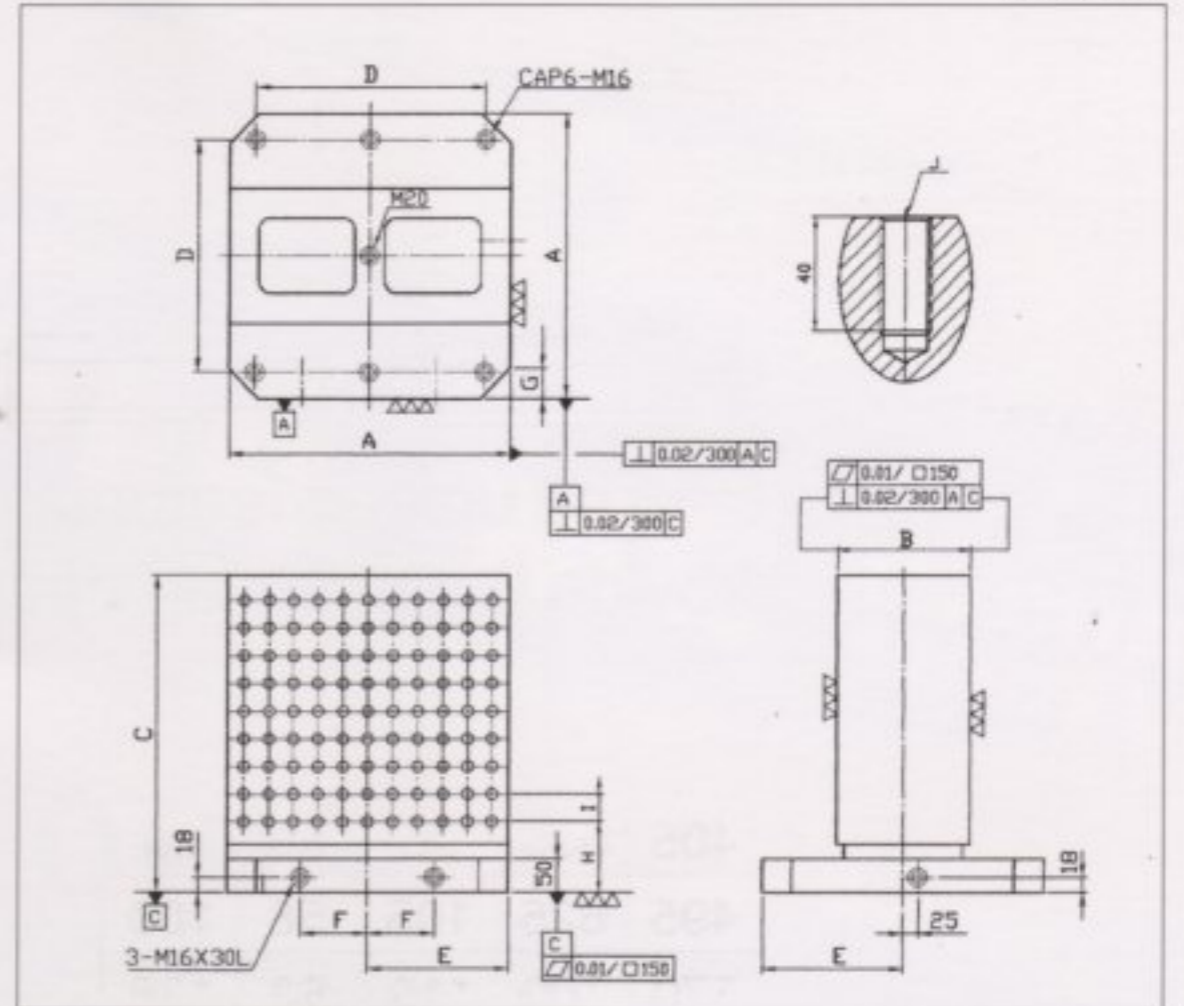
# MC TOOLING BLOCKS(2 FACE TYPE-DRILLING & TAPPING)

## MODEL:AJB-HU-HV

### FEATURES

- 1.Material: FC300
- 2.Heat-treatment-Annealing
- 3.One piece casting of bed and column.

Parallelism  $\pm 0.02/300\text{mm}$   
Squareness  $\pm 0.02/300\text{mm}$



Unit/mm

MODEL ORDER NO.	A	B	C	D	E	F	G	H	I	J	N.W.	REMARK
AJB-400×150×500HU	400	150	500	320	200	55	50	125	50	M12-7×8×2	207	
AJB-500×200×600HU	500	200	600	400	250	75	60	125	50	M12-9×10×2	358	
AJB-630×250×700HU	630	250	700	500	315	100	65	125	50	M12-11×12×2	513	
AJB-800×300×800HU	800	300	800	640	400	135	80	125	50	M12-15×14×2	851	
AJB-400×150×500HV	400	150	500	320	20	55	50	125	50	M16-7×8×2	206	
AJB-500×200×600HV	500	200	600	400	250	75	60	125	50	M16-9×10×2	356	
AJB-630×250×700HV	630	250	700	500	315	100	65	125	50	M16-11×12×2	510	
AJB-800×300×800HV	800	300	800	640	400	135	80	125	50	M16-15×14×2	847	

Unit/mm

# AUTO SUPER

Flexible

Fast

Precise

The unique features of Auto Super products  
provide the users an operation of ease and comfort.

## AUTO SUPER

AUTO SUPER CO., LTD

NO. 645, CHUNGHWA ROAD, CHINGSHUI,  
TAICHUNG HSIEN, TAIWAN

合鋼股份有限公司

台中縣清水鎮中華路645號

TEL:886-4-26281790 FAX:886-4-26281792

<http://www.autosuper.com.tw>

E-mail:autosupe@ms15.hinet.net