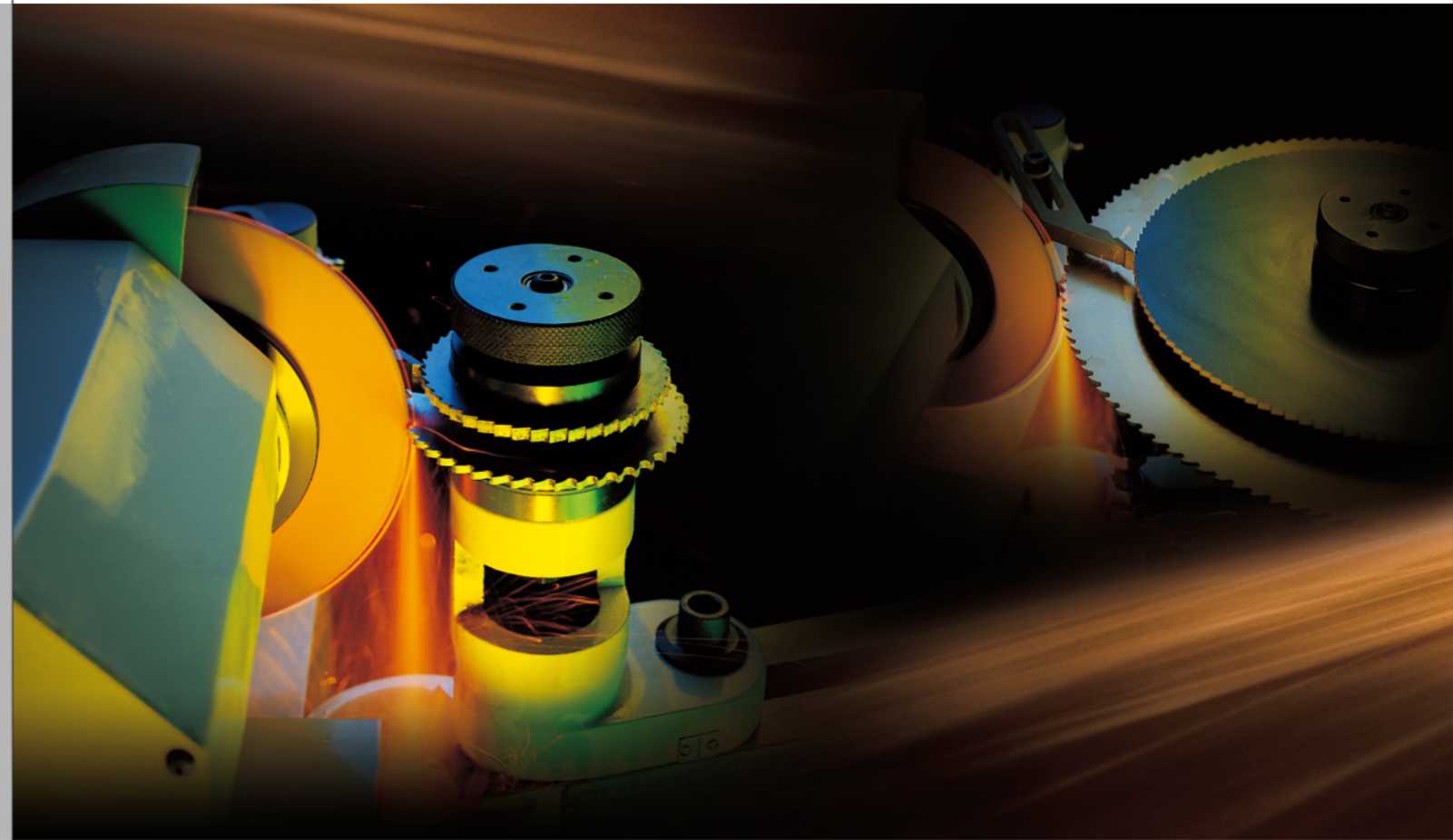
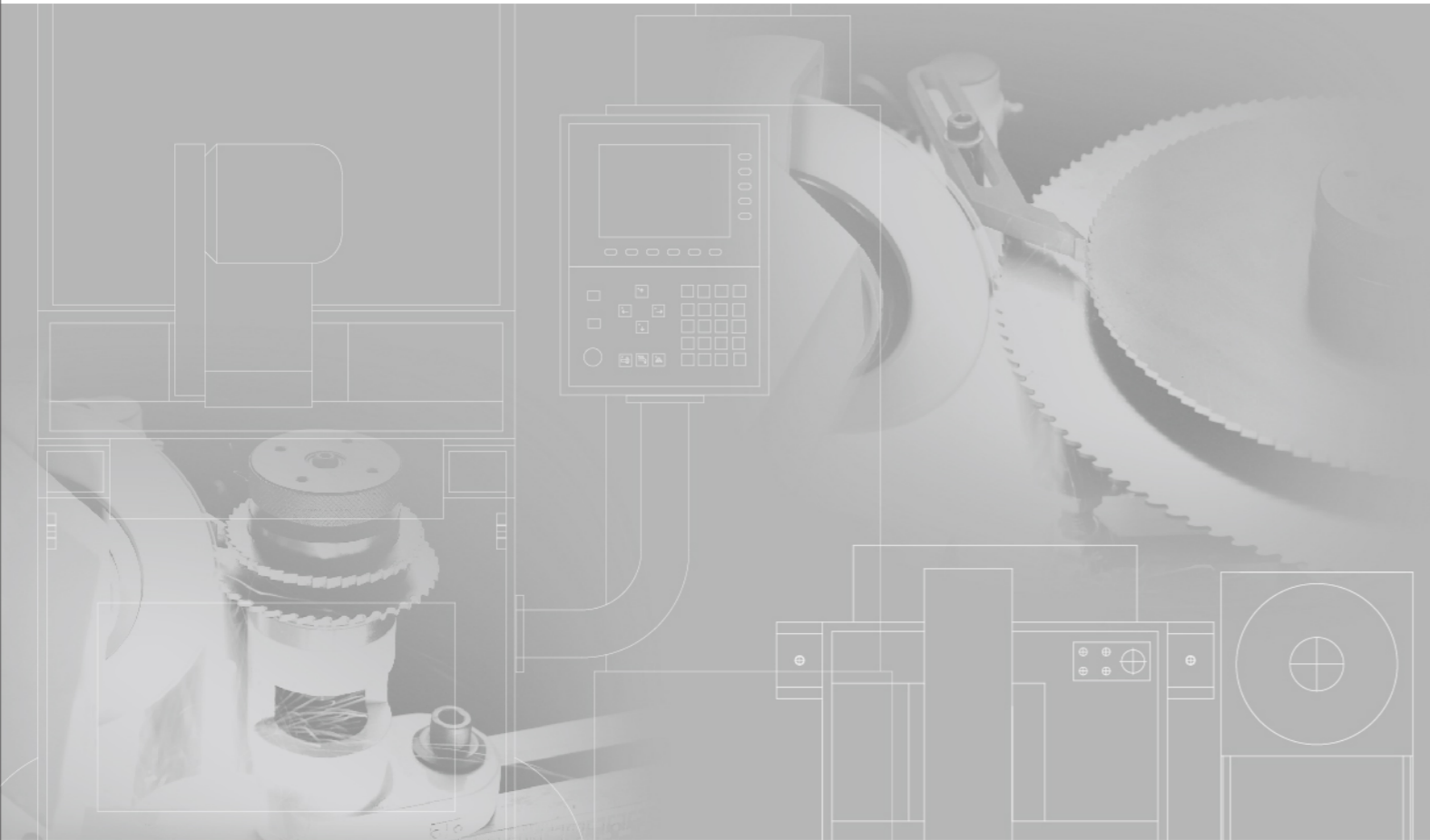




S500/S450/S300 圓鋸片研磨機
Circular Saw Blade Sharpening Machine



易研精密機械有限公司
EYAN MACHINE TOOLS CO., LTD.

台中市南屯區精科七路5號

No.5, Jingke 7th Rd., Nantun Dist., Taichung City 408, Taiwan

Tel: +886-4-2355-3111 Fax: +886-4-2355-2111

E-mail: eyan@eyan.com.tw

eyan@eyan.com

<http://www.eyan.com>

[//www.hsssaw.com](http://www.hsssaw.com)

EYAN MACHINE TOOLS CO., LTD.

EYAN

S500 圓鋸片研磨機

Circular Saw Blade Sharpening Machine

Professional Saw blade Sharpening Machine 專業級的鋸片研磨機

Brand-new Design 功能介紹

- The patented, elegant, and fully-enclosed splash guard is standard accessory. The splash guard is designed to prevent from dust pollution during wet sharpening and reduces noise.
專利的全罩式防護蓋結合美觀的流線型，本機全罩式安全防護蓋為標準配備，並以溼式研磨，防止粉塵污染及降低噪音。
- The newly designed window provides wide vision and easy to view the grinding object. The splash guard is easy to open and convenient to change the saw blade. 設計新穎，獨樹一格的大型窗口，提供寬廣視野，可用於觀察被磨物件，無需費勁即可打開弧形門工作，更換鋸片更方便。
- This professional saw blade sharpening machine is well-designed based on our years of experience. 本機經過多年的精心設計，是一部專業級的鋸片研磨機。
- Brand-new design: This sharpening machine is designed from the operator's point of view. The adjusting levers are arranged ideally for the operator to adjust easily the cutting angle, the back clearance angle, the teeth depth and teeth pitch of the saw blade. Therefore, the edgy saw blade can be ground out rapidly and precisely. 全新的設計，本著操作者的立場所設計的研磨機，其所有的調整桿，均做了合理的排列，讓操作者可以很容易調整鋸齒的切削角、背隙角、齒深及齒距，所以可以快而準確的研磨出鋒利的鋸片。

Stepless Change (Continuous Variable Speeds) 無段變速

- It uses the frequency inverter to control the grinding speed. Therefore, the grinding speed can be adjusted easily following the changes of the teeth pitch according to the requirement. It doesn't use the step pulley so there is no pulley consuming problem.
使用變頻器來控制研磨速度，所以可隨齒距的變化來調整所需要的研磨速度，本機不使用變速皮帶輪，所以沒有變速皮帶輪損耗的問題。

The Adjustment Of Saw Blade Thickness 鋸片厚度調整

- The saw blade thickness is adjusted by a precision graduator, which can accurately adjust the center point of the saw blade.
鋸片厚度經由一個精密的刻度表，可以準確的調整出鋸片的中心點。

Sharpening Capability Of High-low Teeth 高低齒的研磨功能

- The difference of high-low teeth is adjusted by a control dial. The C type teeth with high-low difference can be ground out once.
由一個齒高低差控制鈕調整，可以同時研磨出有高低差的C型齒。

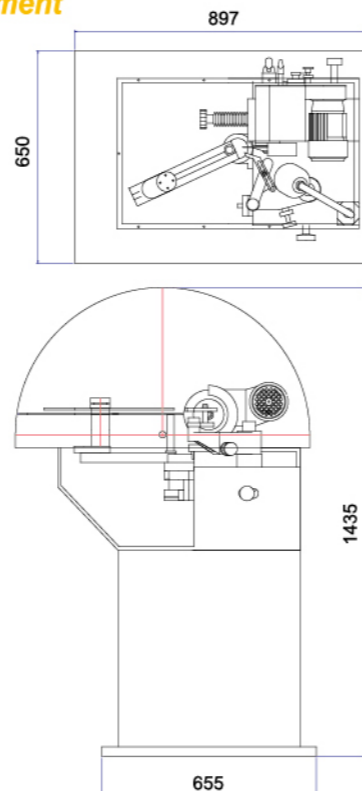
Tooth Shape Cam 齒形凸輪

- The industrial and professional tooth shape cam is designed through an accurately calculated mimic process of the computer. It makes your saw blade grinding jobs simpler, faster and more accurate.
經過電腦精密計算模擬，所設計出的工業級的專業齒形凸輪，使你的鋸片研磨更為簡單、快速精準。
- The grinding head can be adjusted up-and-down, so the chamfer angle can be ground out without changing the grinding wheel.
砂輪頭可以上下擺動，所以可不必更換砂輪，即可研磨出倒角。
- The tungsten-carbide-tipped pushing jaw has maximum wear resistance to maintain the accurate feeding.
推進爪末端焊有碳化鎢，可使進給爪的磨損減至最低，以達到精確的推給。
- Casting of machine are made of ductile iron(FCD-45) for the best wear resistance, tempered and stress relief.
本機所有的鑄鐵均採用球狀石墨鑄鐵(FCD-45)，並經回火處理，以確保精度，及增加耐用性。
- All of the main parts are made of SKD 11 alloy steel, hardened and precision ground.
主要零件均採用SKD11高碳鋼，並經熱處理及研磨。



- The spring of push arm is reformed to ensure the precision of the feeding. Rotary type spring has better resistance from elasticity fatigue.
推臂彈簧經過改良，使用回轉式彈簧，不易彈性疲乏，確保推給準確。
- The support base of the saw blade feeding shaft uses the high tensile brass alloy and embeds the high-tech-made solid lubricant inside. It features heavy load capacity and good wear-resistance to accomplish the oil-free feed function.
鋸片推給軸支持座，使用高強度銅合金作基材，埋入高科技技術製造之固體潤滑劑，其高負荷、耐磨耗的特性更達到完全無給油功能。
- The enlarged 30mm feeding shaft is hardened and precision ground.
推給軸使用 $\varnothing 30\text{mm}$ ，加大軸心並經熱處理及研磨。

Measurement 尺寸圖



Specifications 規格表

| | | |
|--|---------------------------|--|
| Grinding Range 研磨範圍 | Optional accessories 選購配件 | $\varnothing 65-500\text{mm}$ $\varnothing 35-100\text{mm}$ |
| Tooth pitch 齒距 | | 25 mm Max. 最大 |
| Sawblade Thickness 鋸片厚度 | | 8 mm under 以下 |
| Grinding speed 研磨速度 | | 30~135 teeth / min 齒/分鐘 |
| Cutting angle 切削角 | | 0~30 |
| Grinding wheel diameter 砂輪外徑 | | $\varnothing 150\text{ mm}$ |
| Grinding wheel motor 砂輪馬達 | | 0.37 KW |
| Transmission motor 傳動馬達 | | 0.37 KW |
| Grinding wheel speed 50HZ/60HZ 砂輪轉速 | | 3800 / 4500 rpm |
| Net weight/gross weight 淨重/毛重 | | 302 / 431 kg |
| Packing size 裝箱尺寸 | | 113 x 92 x 160 cm |

Standard Fittings 標準配件

| | | |
|----------------------|--|---------|
| Work lamp 工作燈 | | 1pc 個 |
| Tool box 工具箱 | | 1set 套 |
| Operation Manual 說明書 | | 1copy 份 |
| Guide Plate 導板 | | 2pcs 片 |
| Grinding wheel 砂輪 | | 10pcs 片 |

※ All specifications, designs and characteristics shown in this catalogue are subject to change without prior notice.
因設計或製造上的需要，如有變更恕不另行通知。

HIGH METICULOUS



Chamfer diagram 倒角示意圖



Charmfer diagram 倒角示意圖

TOOTH TYPE 齒型

For Non Ferrous Metal 非鐵用



Fore Ferrous Meta 鐵用



Patent!

S450 圓鋸片研磨機

Circular Saw Blade Sharpening Machine

Professional Class Sawblade Sharpening Machine 專業級的鋸片研磨機

Instruction of Functions 功能介紹

- A Firm Floor Model Machine 穩定性佳的落地型機種。
- Sharpening Capability of High-low Teeth. 高低齒的研磨功能。
- It is adjusted by a control dial the teeth high-low difference. The C type teeth with high-low difference could be ground out the same time.
由一個齒高低差控制鈕調整，可以同時研磨出有高低差的C型齒。

The Adjustment of The Sawblade Thickness 鋸片厚度調整

- The sawblade thickness is adjusted by a precision graduator. It could accurate adjust the center point of the sawblade
鋸片厚度經由一個精密的刻度表，可以準確的調整出鋸片的中心點。

Variable Speed Switch 變極開關

- The transmission motor could be changed from 4P into 8P freely by the variable speed switch. The maximum of 4P grinding speed is 180 teeth and the minimum of 8P grinding speed is 45 teeth.
傳動馬達可經由變極開關，4P、8P自由轉換，4P最快研磨速度180齒，8P最慢研磨速度45齒。

Stepless Change 無段變速

- It uses the stepless change pulley, therefore, the grinding speed could be adjusted following the changes of the teeth pitch per your need.
使用無段變速皮帶輪，所以可隨齒距的變化來調整所需要的研磨速度。

Bran-new Design 全新設計

- This machine is well-designed for years and it is a professional class sawblade sharpening machine. 本機經過多年的精心設計，是一部專業級的鋸片研磨機。
- Bran-new design; this sharpening machine is designed in the operator's position. All of the adjusting levers are arranged reasonably. In this way, the operator could adjust the cutting angle, the back clearance angle, the teeth depth and teeth pitch of the sawblade easily. Therefore, the edgy sawblade could be ground out rapidly and precisely.

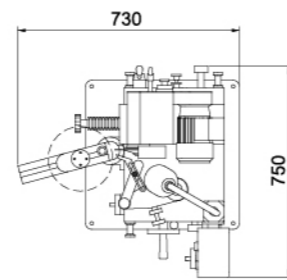
全新的設計，本著操作者的立場所設計的研磨機，其所有的調整桿，均做了合理的排列，讓操作者可以很容易調整鋸齒的切削角、背隙角、齒深及齒距，所以可以快而準確的研磨出鋒利的鋸片。

Tooth Shape Cam 齒形凸輪

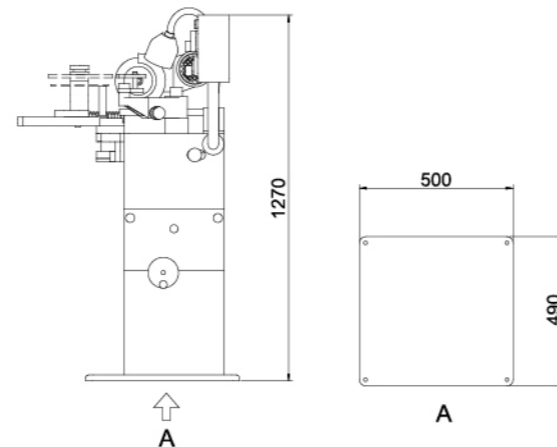
- Through an accurate calculated mimic process of the computer, the industrial class and professional tooth shape cam could be designed. In this way, it would makd your grinding of the sawblade more simple, more fast and more accurate.
經過電腦精密計算模擬，所設計出的工業級的專業齒形凸輪，使你的鋸片研磨更為簡單、快速精準。
- The grinding head could do an up-and-down sawing, therefore, the chamfer angle could be ground out without changing the grinding wheel.
砂輪頭可以上下擺動，所以可不必更換砂輪，即可研磨出倒角。
- The tungsten carbide tipped pushing jaw provides maximum wear resistance to achieve the accurate feeding.
推進爪末端焊有碳化鎢，可使進給爪的磨損減至最低，以達到精確的推給。
- Applying the ball black lead cast iron (FCD-45) to all the cast irons in this machine. Also, I tempered process is accomplished to ensure the accuracy and to increase the wear resistance.
本機所有的鑄鐵均採用球狀石墨鑄鐵(FCD-45)，並經回火處理，以確保精度，及增加耐磨性。
- All of the main parts uses SKD 11 high carbide steel. Also, the grinding and the heat treatment process are accomplished. 主要零件均採用SKD11高碳鋼，並經熱處理研磨。
- The push arm spring is reformed. It uses rotary spring to avoid the elastic deformation of the spring and to ensure the precision of the feeding.

推臂彈簧經過改良，使用回轉式彈簧，不易彈性疲乏，確保推給準確。

- Apply the high tensile alloy brass to the support of the sawblade feeding shaft and insert the high-tech-made concrete lubricant into it. It's specialty of high load carrying capacity and well wear-resistance could accomplish the oil-less feed function totally.
鋸片推給軸支持座，使用高強度銅合金作基材，埋入高科技技術製造之固體潤滑劑，其高負荷、耐磨耗的特性更達到完全無給油功能。
- Using the feeding shaft in 30mm. The spindle is enlarged and the heat treatment process are accomplished.
推給軸使用 $\varnothing 30\text{mm}$ ，加大軸心並經熱處理及研磨。



Measurement 尺寸圖



Specifications 規格表

| | | |
|-------------------------------------|---------------------------|----------------------------------|
| Grinding Range 研磨範圍 | Optional accessories 選購配件 | Ø65-450mm Ø35-100mm |
| Tooth pitch 齒距 | | 25 mm Max. 最大 |
| Sawblade Thickness 鋸片厚度 | | 8 mm Under 以下 |
| Grinding speed 研磨速度 | | 72~143 teeth/min 113~223 齒/分鐘 |
| Cutting angle 切削角 | | 0~30° |
| Grinding wheel diameter 砂輪外徑 | | Ø150 mm |
| Grinding wheel motor 砂輪馬達 | | 0.37 KW |
| Transmission motor 傳動馬達 | | 0.37 KW |
| Grinding wheel speed 50HZ/60HZ 砂輪轉速 | | 3800/4500 rpm |
| Net weight/gross weight 淨重/毛重 | | 180 / 230 kg |
| Package size 裝箱尺寸 | | 73 x 93 x 155 cm |

Standard Fittings 標準配件

| | | |
|----------------------|--|---------|
| Work lamp 工作燈 | | 1pc 個 |
| Tool box 工具箱 | | 1set 套 |
| Operation Manual 說明書 | | 1copy 份 |
| Guide Plate 導板 | | 2pcs 片 |
| Grinding wheel 砂輪 | | 10pcs 片 |

※ All specifications, designs and characteristics shown in this catalogue are subject to change without prior notice.
因設計或製造上的需要，如有變更恕不另行通知。

HIGH METICULOUS



Chamfer diagram 倒角示圖



Chamfer diagram 倒角示圖

TOOTH TYPE 齒型
For Non Ferrous Metal 非鐵用



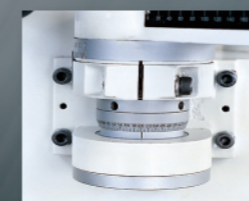
Fore Ferrous Meta 鐵用



Grinding wheel tilting adjustment 砂輪上下擺動刻度



High/Low teeth indicator meter 高低齒量錶



Blade thickness adjustment 鋸齒厚度調整刻度



Stepless speed Adjustment 無段變速



High/Low teeth grinding adjustment 高低齒調整鈕

S300 圓鋸片研磨機

Circular Saw Blade Sharpening Machine

Standard type circular sawblade sharpener 標準型鋼圓鋸片研磨機

Instruction of Functions 功能介紹

- Desktop type machine 桌上型機種。
- Constant sharpening speed: 90 teeth/minute 研磨速度為固定式，每分鐘為90齒。
- It is applicable for grinding the straight teeth and the circular arc teeth. The teeth shape could be changed per your need only with a hex. Spanner. 可研磨直型齒及圓弧齒，只需一支六角板手即可變換出所需之齒形。
- It is suitable to select and purchase the special bantamweight clamping seat of the sawblade for this machine, thus the little sawblade in 30 diameter could be ground. 本機可選購特殊小型鋸片夾緊座即可研磨外徑 ϕ 30之小鋸片。

Easy to operate and adjust 操作調整簡易

- The clamping seat of the sawblade is reformed It endures the friction with special bearing to avoid the spring sheet's abrasion and to ensure the machine's sharpening accuracy and durable capability. 鋸片夾緊座經過改良，使用特殊軸承，承受磨擦力，不會造成彈簧片磨損，確保機器的研磨精度及耐用性。

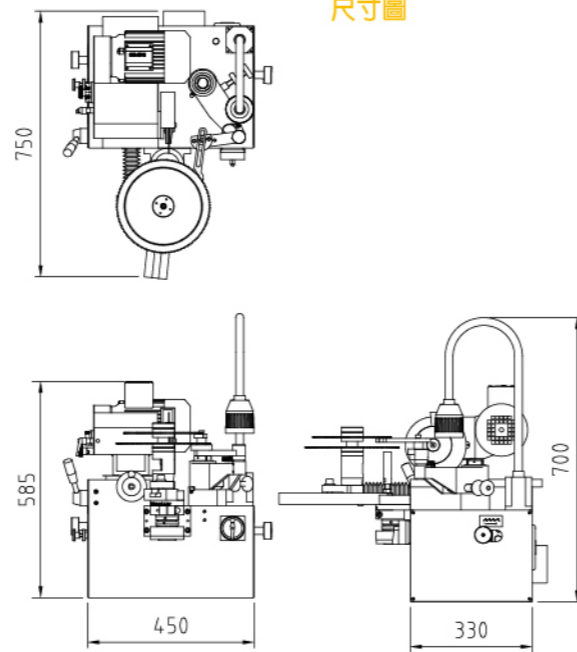
The Adjustment Of Saw Blade Thickness 鋸片厚度調整

- The saw blade thickness is adjusted by a precision graduator, which can accurately adjust the center point of the saw blade. 鋸片厚度經由一個精密的刻度表，可以準確的調整出鋸片的中心點。

Tooth Shape Cam 齒形凸輪

- The industrial and professional tooth shape cam is designed through an accurately calculated mimic process of the computer. It makes your saw blade grinding jobs simpler, faster and more accurate. 經過電腦精密計算模擬，所設計出的工業級的專業齒形凸輪，使你的鋸片研磨更為簡單、快速精準。
- The grinding head can be adjusted up-and-down, so the chamfer angle can be ground out without changing the grinding wheel. 砂輪頭可以上下擺動，所以可不必更換砂輪，即可研磨出倒角。
- The tungsten-carbide-tipped pushing jaw has maximum wear resistance to maintain the accurate feeding. 推進爪末端焊有碳化鎢，可使進給爪的磨損減至最低，以達到精確的推給。
- Casting of machine are made of ductile iron(FCD-45) for the best wear resistance, tempered and stress relief. 本機所有的鑄鐵均採用球狀石墨鑄鐵(FCD-45)，並經回火處理，以確保精度，及增加耐磨性。
- All of the main parts are made of SKD 11 alloy steel, hardened and precision ground. 主要零件均採用SKD11高碳鋼，並經熱處理研磨。
- The spring of push arm is reformed to ensure the precision of the feeding. Rotary type spring has better resistance from elasticity fatigue. 推臂彈簧經過改良，使用回轉式彈簧，不易彈性疲乏，確保推給準確。
- The support base of the saw blade feeding shaft uses the high thsile brass alloy and embeds the high-tech-made solid lubricant inside. It features heavy load capacity and good wear-resistance to accomplish the oil-free feed function. 鋸片推給軸支持座，使用高強度銅合金作基材，埋入高科技技術製造之固體潤滑劑，其高負荷、耐磨耗的特性更達到完全無給油功能。
- The enlarged 30mm feeding shaft is hardened and precision ground. 推給軸使用 ϕ 30mm，加大軸心並經熱處理及研磨。

Measurement 尺寸圖



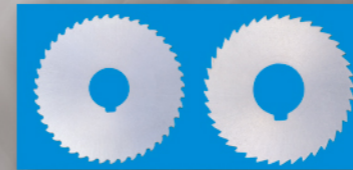
Specifications 規格表

| | | |
|-------------------------------------|---------------------------|------------------------------------|
| Grinding Range 研磨範圍 | Optional accessories 選購配件 | ϕ 65-300mm ϕ 35-100mm |
| Tooth pitch 齒距 | | 25 mm Max. 最大 |
| Tooth depth 齒深 | | 8 mm |
| Sawblade Thickness 鋸片厚度 | | 8 mm Under 以下 |
| Grinding speed 研磨速度 | Constant speed 定速 | 90 teeth/min 齒/分鐘 |
| Cutting angle 切削角 | | 0~30° |
| Grinding wheel diameter 砂輪外徑 | | ϕ 150 mm |
| Grinding wheel speed 50HZ/60HZ 砂輪轉速 | | 3800/4500 rpm |
| Grinding wheel motor 砂輪馬達 | | 0.37 KW |
| Transmission motor 傳動馬達 | | 0.37 KW |
| Net weight/gross weight 淨重/毛重 | | 130 / 160 kg |
| Package size 裝箱尺寸 | | 75 x 68 x 72 cm |

Standard Fittings 標準配件

| | | |
|----------------------|--|---------|
| Work lamp 工作燈 | | 1pc 個 |
| Tool box 工具箱 | | 1set 套 |
| Guide Plate 導板 | | 1pc 個 |
| Operation Manual 說明書 | | 1copy 份 |
| Grinding wheel 砂輪 | | 5pcs 片 |

※ All specifications, designs and characteristics shown in this catalogue are subject to change without prior notice. 因設計或製造上的需要，如有變更恕不另行通知。



Applicable for 適用:
HSS Steel Circular Sawblade
HSS 高速鋼圓鋸片
TCT Steel Circular Sawblade
TCT 碳化鎢鋼圓鋸片

TOOTH TYPE 齒型
For Non Ferrous Metal 非鐵用



For Ferrous Meta 鐵用



Standard Fittings ϕ 60
標準配件 ϕ 60



Specifications ϕ 30
選購配件 ϕ 30