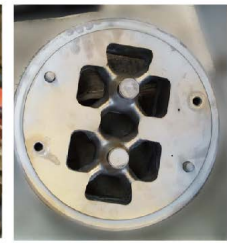


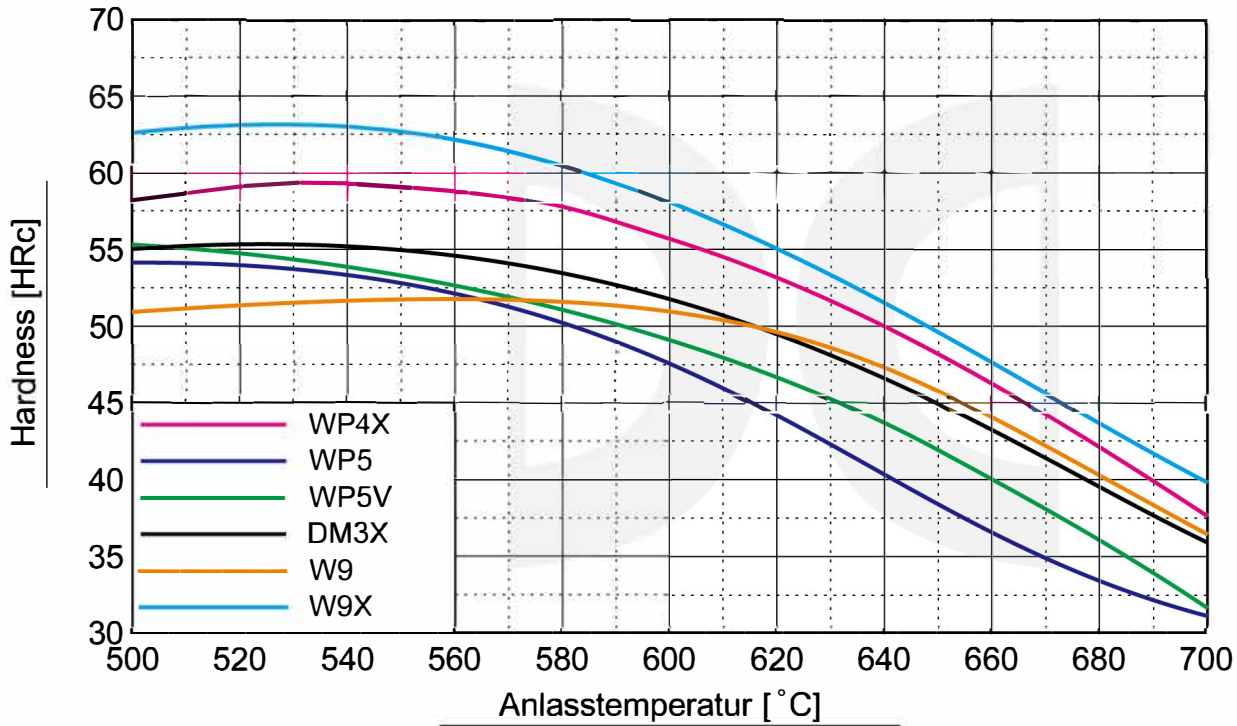


Doerrenberg Special Steels

Premium Hot Work Tool Steel



Grade				Chemical composition							Hardening Temperature	Applicable Hardness
Doerrenberg	DIN	JIS	AISI	C	Si	Cr	Mo	V	W	Co	°C	HRC
WP5	1.2343	SKD6	H11	0.35	1.00	5.00	1.00	0.40			1000~1030	42~48
WP5X	1.2606		H12	0.37	1.00	5.30	1.45	0.28	1.30		1020~1050	44~54
WP5V	1.2344	SKD61	H13	0.37	1.00	5.30	1.00	1.00			1000~1030	44~52
WP7V				0.50	1.00	7.80	1.50	1.50			1050~1090	53~57
DM3	1.2365		H10	0.32	0.20	3.00	2.80	0.50			1000~1050	44~46
DM3X	1.2367			0.38	0.40	5.00	3.00	0.50			1010~1050	44~54
PLH				0.60	0.30	4.00	0.80	0.70	9.00		1150~1200	42~56
W9	1.2581		H21	0.30	0.20	2.80		0.40	9.00		1140~1160	44~52
WP4X				0.50	0.20	4.20	2.00	+	+		1060~1140	52~56
DM45	1.2888			0.20	0.20	9.50	2.00		5.50	10.0	1100~1150	46~50



■ Toughness
 ■ Wear Resistance
 ■ Temper Resistance

