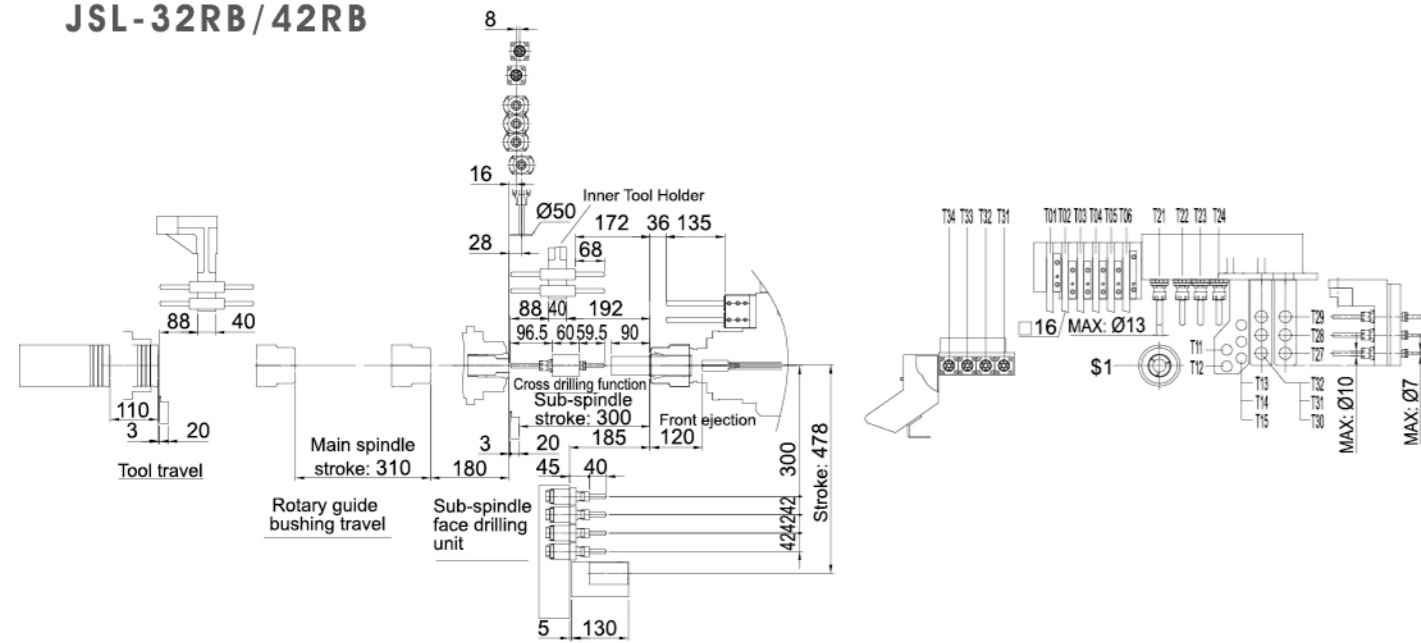
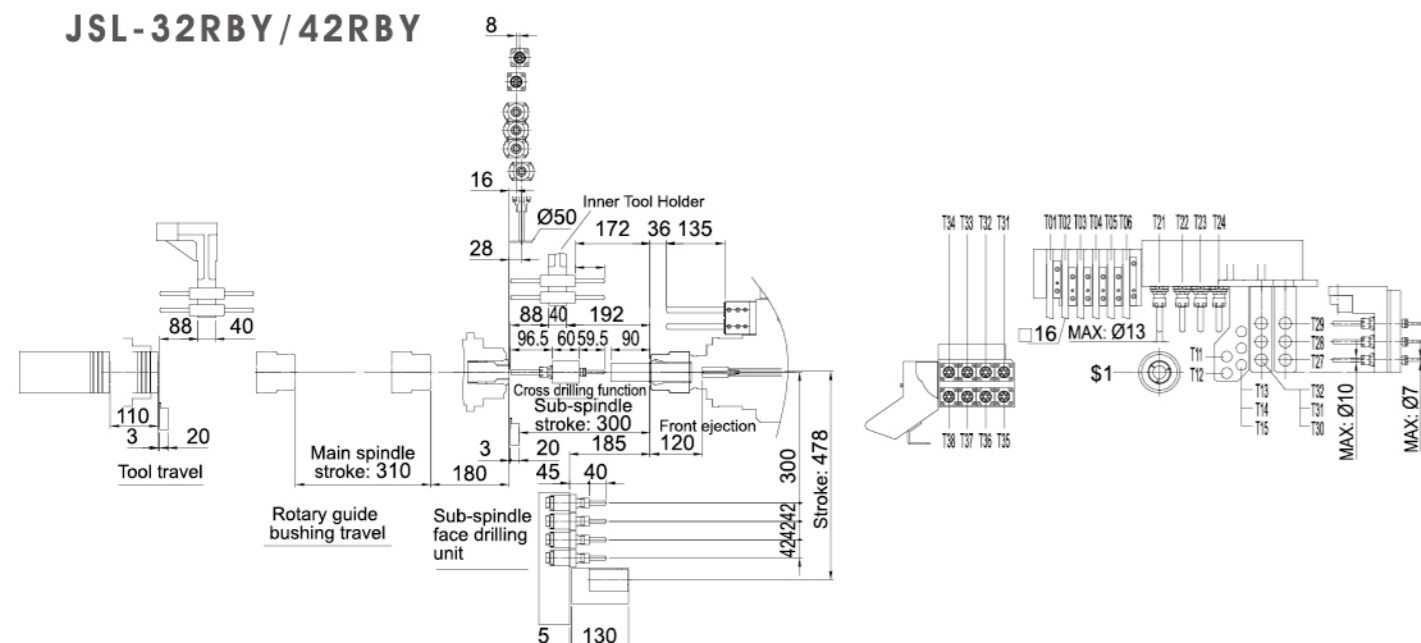


TOOLING SYSTEM LAYOUT

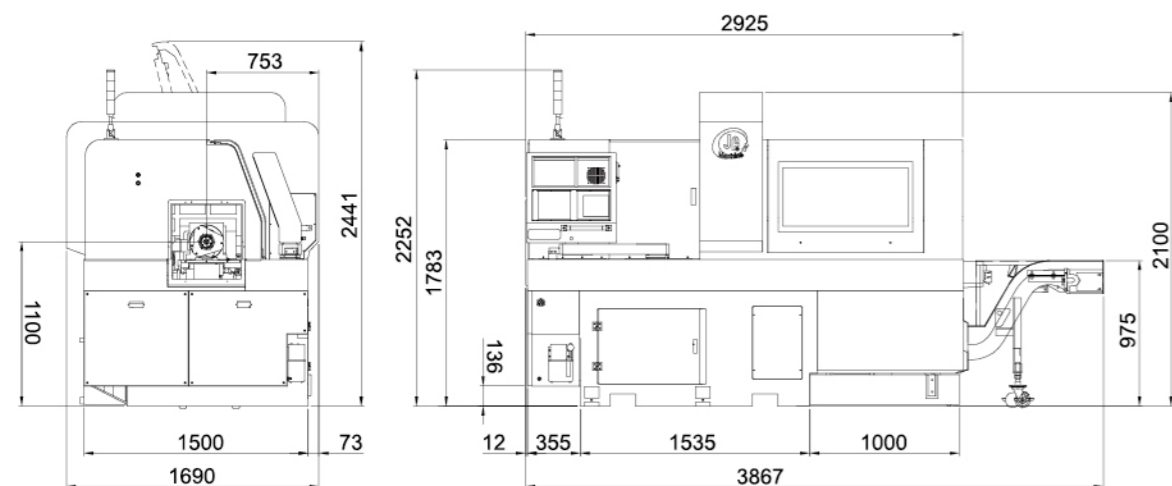
JSL-32RB/42RB



JSL-32RBY/42RBY



DIMENSIONAL MACHINE DRAWING



SPECIFICATIONS

ITEM	UNIT	JSL-32RB	JSL-32RBY	JSL-42RB	JSL-42RBY
Max. turning diameter of main spindle	mm	32		42	
Max. turning diameter of sub-spindle	mm	32		42	
Max. turning length (Rotating guide bushing)	mm		310		
Max. turning length (Non-guide bushing)	mm		105		
Max. turning length (Fixed bushing)	mm		350		
Max. drilling/tapping capacity of main spindle	mm		Ø13 / M10		
Max. drilling/tapping capacity of sub-spindle	mm		Ø10 / M8		
Max. cross drilling/tapping capacity	mm		Ø10 / M6		
O.D. tool holder	pcs		6 (□16mm) / 5 (□20mm)		
I.D. tool holder	pcs		5 / Ø25mm		
S1 cross live tool holder	pcs		6 (ER-16x2 & ER-20x4)		
Face drills of sub-spindle	pcs	4	8	4	8
Controlled axes (Incl. C-axis)	pcs	7	8	7	8
Main/sub-spindle bore	mm		Ø34		Ø44
Max. speed of main/sub-spindle	rpm		7000		6000
X1/Z1/Y1/X2/Z2/Y2-axis rapid traverse	m/min			24	
Max. speed of S1 cross drilling	rpm			4000	
S1 cross tooling drive motor	KW			1.6	
S2 face tooling drive motor	KW			0.75	
Max. speed of S2 drill	rpm			4000	
Main spindle motor	KW			5.5 / 7.5	
Sub-spindle motor	KW			5.5 / 7.5	
X1, Z1-axis motor	KW			1.4	
Y1, X2, Z2-axis motor	KW			0.75	
Y2-axis motor	KW	non	0.75	non	0.75
Coolant pump motor	KW			1.29	
Power required	KVA			30	
Lubrication oil capacity	L			2	
Coolant tank capacity	L			250 (100%)	
Machine dimensions (L x W x H)	mm		3106 x 1690 x 2100		
Weight	KG	4900	4920	4900	4920

* Machine specifications are subject to change without prior notice.

STANDARD ACCESSORIES

	JSL-32RB	JSL-32RBY	JSL-42RB	JSL-42RBY	JSL-32RB	JSL-32RBY	JSL-42RB	JSL-42RBY
External tool holder (6 tools)	o	o	o	o	o	o	o	o
Inner tool holder (5 tools)	o	o	o	o	o	o	o	o
Cross drilling tool holder (6 tools)	o	o	o	o	o	o	o	o
Parts catcher and conveyor	o	o	o	o	o	o	o	o
Tools & toolbox	o	o	o	o	o	o	o	o
Lighting device	o	o	o	o	o	o	o	o
Fixed guide bushing holder	o	o	o	o	o	o	o	o
Main spindle servo motor	o	o	o	o	o	o	o	o
Main spindle with C-axis function	o	o	o	o	o	o	o	o
Cutting coolant	o	o	o	o	o	o	o	o
Cutting coolant inspection (Electronic type)	o	o	o	o	o	o	o	o
Cut-off inspection	o	o	o	o	o	o	o	o
Lubrication device	o	o	o	o	o	o	o	o
Sub-spindle with C-axis function	o	o	o	o	o	o	o	o
Sub-spindle	o	o	o	o	o	o	o	o
Face drilling/milling tool holder (4 tools) for sub-spindle	o	o	o	o	o	o	o	o
Face drilling/milling tool holder (8 tools) for sub-spindle	-	-	-	-	-	-	-	-
Y2-axis	-	-	-	-	-	-	-	-
Fixed tool holder (Sub-spindle)	2pcs	3pcs	2pcs	3pcs	2pcs	3pcs	2pcs	3pcs
Rotary tool holder (Sub-spindle)	2pcs	3pcs	2pcs	3pcs	2pcs	3pcs	2pcs	3pcs
3-position O.D. tool holder (Sub-spindle)	-	1pcs	-	1pcs	-	1pcs	-	1pcs
Chuck gripper	2pcs	2pcs	2pcs	2pcs	2pcs	2pcs	2pcs	2pcs
Machining room with safety lock	o	o	o	o	o	o	o	o
Guide bush	1pcs	1pcs	1pcs	1pcs	1pcs	1pcs	1pcs	1pcs
Spindle collet chuck	2pcs	2pcs	2pcs	2pcs	2pcs	2pcs	2pcs	2pcs
Operation manual	o	o	o	o	o	o	o	o
NC control operation manual	o	o	o	o	o	o	o	o
NC control maintenance manual	o	o	o	o	o	o	o	o

OPTIONAL ACCESSORIES

- ER16 M2 double side inner tool holder
- Simultaneous rotary guide bush holder
- Non guide bush holder
- Long part catcher
- Chip conveyor & cart
- ER 16/20 collet set
- Cutting oil chiller
- Stationary drilling tool holder (Sub-spindle)
- Rotary drilling tool holder (Sub-spindle)
- Thread whirling unit (Without inserts and insert holder)
- Power driven saw unit
- 3-position eccentric tool holder (main and sub-spindle)
- 3-position angle drilling tool holder (Manual)
- 1-position cross live tool holder (Sub-spindle)
- O.D tool holder (Sub-spindle)
- Shortened type Ø16 I.D. tool holder (Sub-spindle)
- Ø16 I.D. tool holder (Sub-spindle)
- Extended I.D. tool holder for sub-spindle (Ø16, 1-2)
- Extended tool holder Ø16 (With one Ø16 1-2 I.D. tool holder)
- Oil mist collector
- High pressure coolant system 15/50/100 bars (With sub-coolant tank)
- Hydraulic bar feeder
- Hydraulic chuck for sub-spindle
- CE
- Transformer
- Voltage stabilizer

SWISS TURN MACHINE



**JSL-32RB/32RBY
42RB/42RBY**



A NEW STANDARD IN EFFICIENT TURNING AND MILLING OPERATIONS

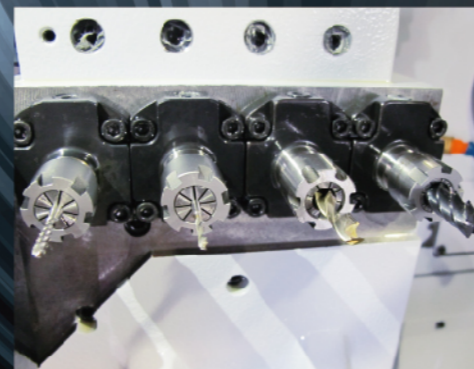
Main and sub-spindle combined with comprehensive tooling systems

Designed with high efficiency and multi-tasking features, Jinn Fa JSL-32RB/42RB and JSL-32RBY/42RBY Swiss turning machines integrate sliding head and sliding tool in one single machine. For applications in traveling-tool machining, these series are constructed around three axes (X, Y & Z) in combination with powered tool function. It allows for turning, milling, drilling and tapping operations with only one setup. The main spindle and sub-spindle perform machining synchronously, saving time for primary and secondary machining while ensuring higher accuracy for parts.

APPLICABLE PARTS MACHINING

Automotive and motorcycle parts / Electronic parts / Instrument parts / Pneumatic and hydraulic parts / Medical instruments.

JSL-32RB/42RB



Sub-spindle tooling system
 The sub-spindle tooling system allows the machine to perform backside machining on a part.

JSL-32RBY/42RBY



Sub-spindle tooling system - Y axis
 The sub-spindle tooling system allows the machine to perform backside machining on a workpiece.

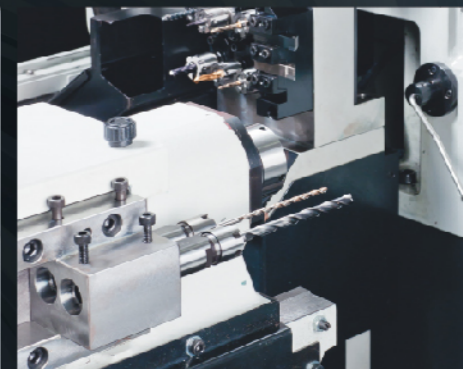


Cross/Face drilling function
 The side drilling unit can be converted to 3-position face drilling for main and sub spindle.
 Angle adjustment (manually)

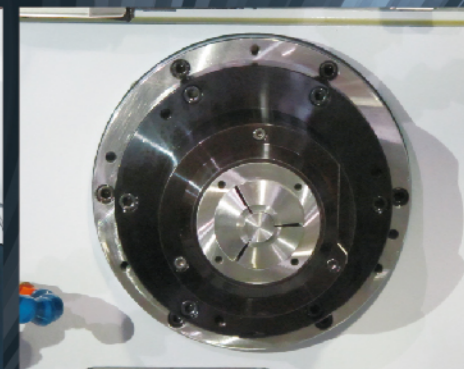
JSL-32RB/32RBY/42RB/42RBY



Fanuc 32i CNC control
 The control panel can be moved and swiveled for upgrading operating convenience.

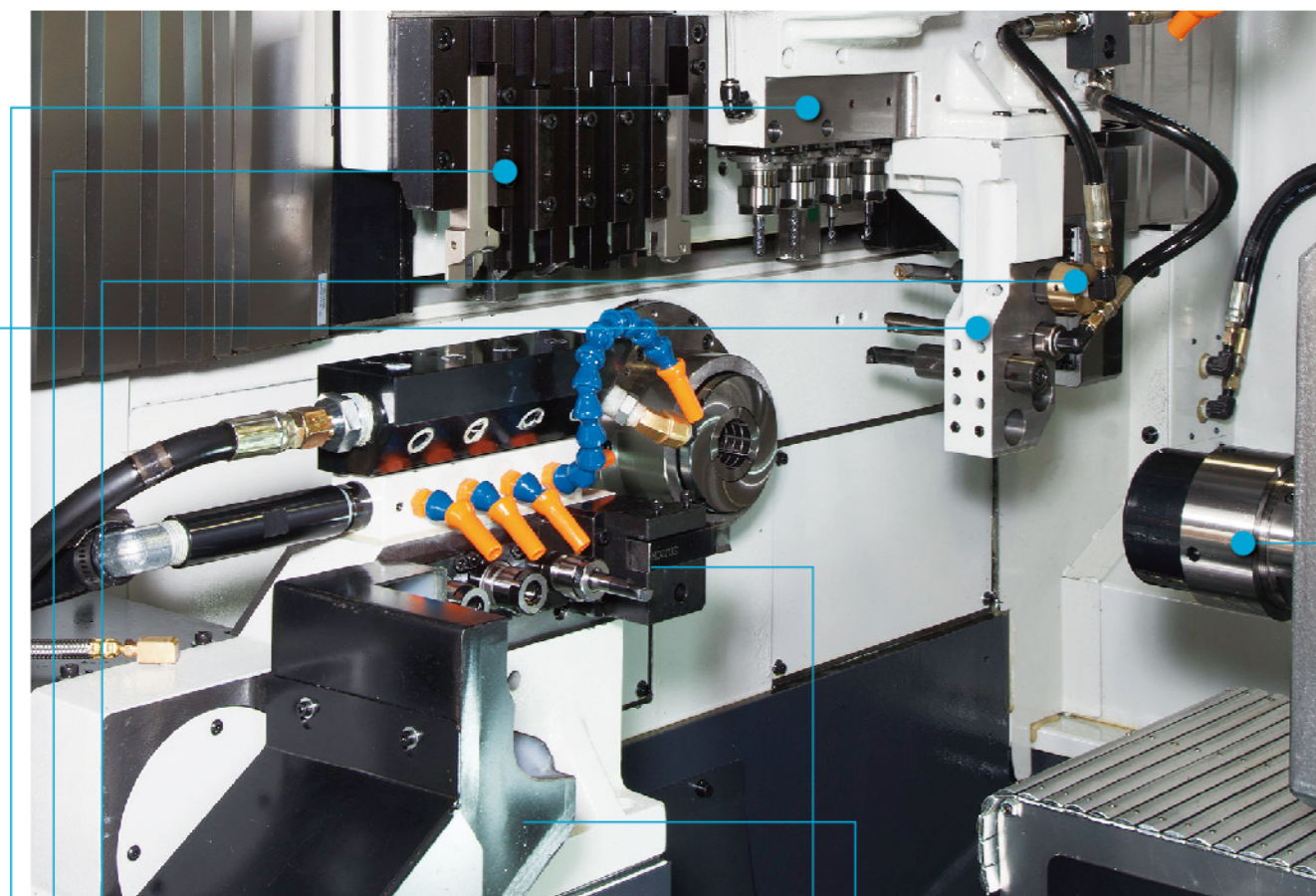


Deep hole drilling device (Max. 135mm)
 The sub-spindle can be equipped with a deep hole drilling device with coolant through drill.



Rotary guide bushing holder
 For use in sliding head lathe to increase stability and surface finish for long part machining.

TOOLING SYSTEM LAYOUT



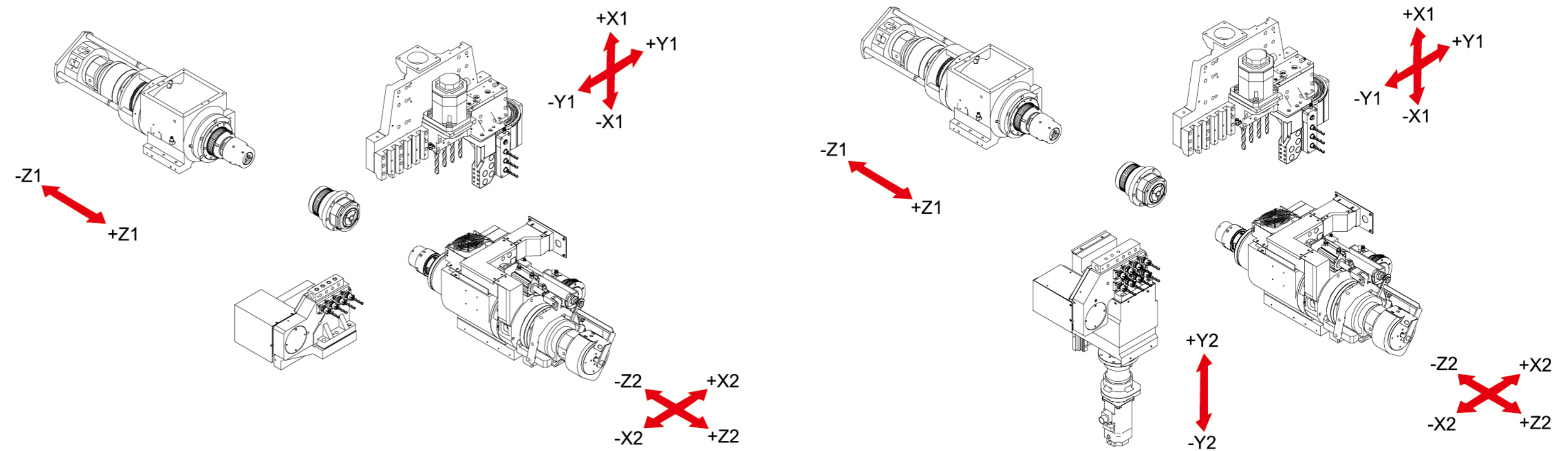
First tooling system

- 6-position O.D. tool holder
- 6-position cross drilling & milling tool holder
- 5-position I.D. tool holder
- High pressure coolant system

Second tooling system

- Parts catcher
- Sub-spindle tooling system
- Sub-spindle

TOOLING SYSTEM LAYOUT



JSL-32RB/42RB

JSL-32RBY/42RBY