

MOTORCYCLE LOCK

Product Features

- Cylinder
 - Avoid destroying and hard to breakdown
- Construction
 - The cylinder and the main body are separated design to avoid being locked up for false touching or breakdown
- Simple operation
 - Convenient lock / unlock
- Installation
 - DIY design, easy installation and suitable for most of the motorcycle models
- Attached noiseless cylinder case for storage



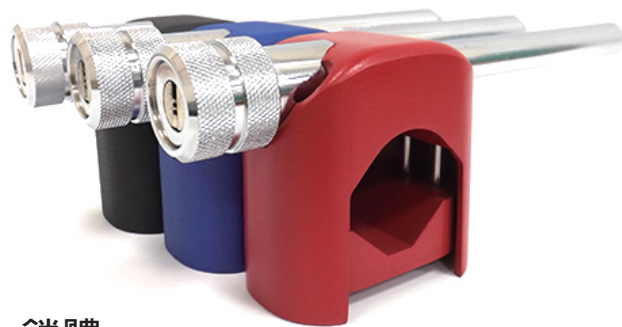
- The lock body
 - Aluminum alloy and lightweight design to avoid affecting shock absorber
 - Stainless steel screw to avoid being rusted
- The cylinder
 - HRC60 high-density steel to avoid destroy, drill, cut and saw
 - Additional DIY case to store the cylinder



機車鎖

產品特性

- 鎖芯-高強度防破壞，不易破解，故障率低。
- 結構—鎖針與鎖具採特殊分離式設計，行車中不會因誤觸或故障而上鎖，提升安全性。
- 操作簡便，上/解鎖步驟簡單。
- 安裝-DIY設計，安裝簡易快速，適用多種車型。
- 附專用鎖針固定座，輕巧好收納，行車無雜音。



• 鎖體

鋁合金輕量化設計，避免安裝於前避震器時，重量造成的行車重心偏移。使用不銹鋼螺絲固定，避免因生銹而無法拆卸。(每組皆附專用六角板手)

• 鎖針

採用HRC60高硬度合金鋼製作，抗破壞，防鑽、防剪、防鋸效果佳。每組附「鎖針固定座」可自行安裝，收納鎖針。

